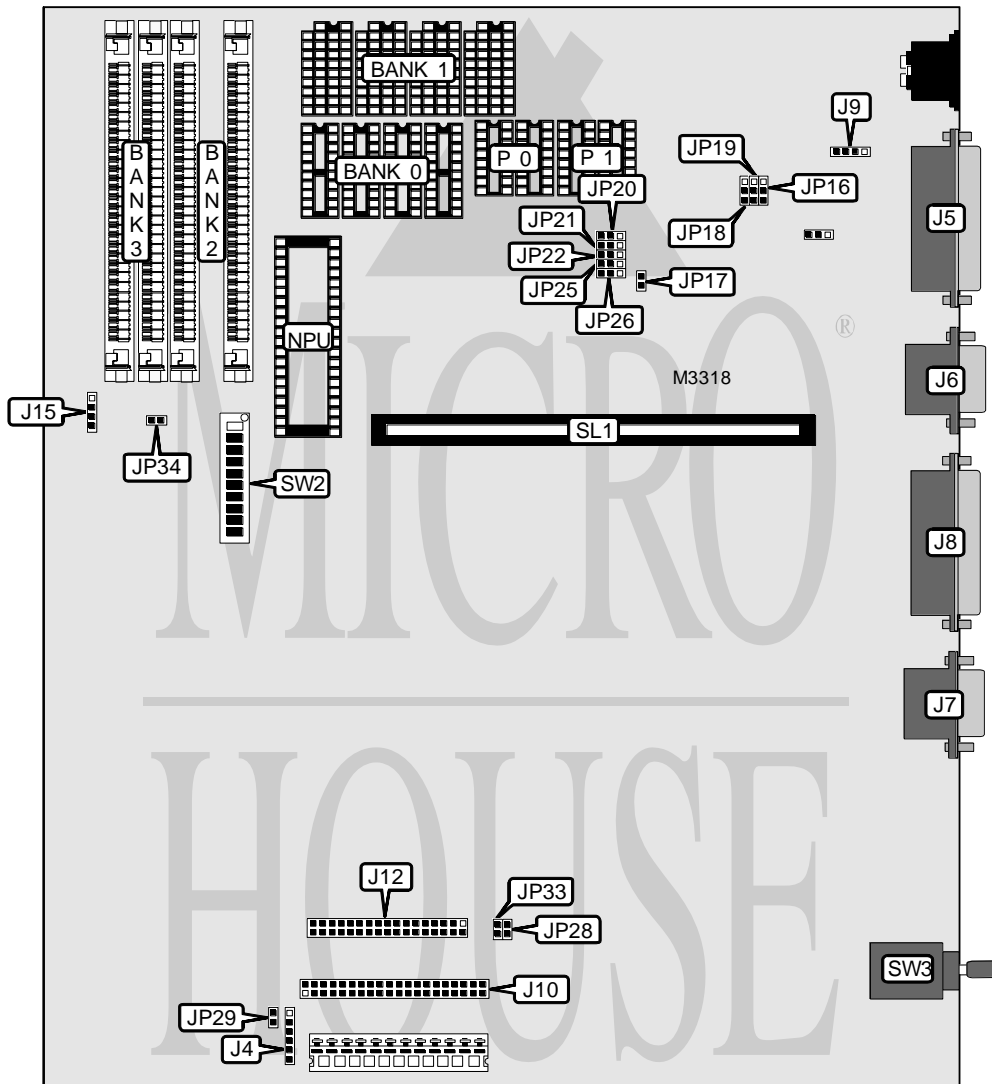


LASER COMPUTER, INC. LASER 286S

Processor	80286 (exact location unidentified)	
Processor Speed	16MHz	
Chip Set	Unidentified	
Maximum Onboard Memory	4MB	
Cache	None	
BIOS	AMI	
Dimensions	330mm x 218mm	
I/O Options	Floppy drive interface, game port, IDE interface, parallel port, (2), riser slot	serial ports
NPU Options	80287	



Continued on next page...

LASER COMPUTER, INC.
L A S E R 2 8 6 S

... continued from previous page

CONNECTIONS			
Function	Label	Function	Label
Front panel connector	J4	IDE interface	J10
Parallel port	J5	Floppy drive interface	J12
Game port	J6	Speaker	J15
Serial port 2	J7	IDE interface LED	JP29
Serial port 1	J8	Riser slot	SL1
External battery	J9		

USER CONFIGURABLE SETTINGS		
Setting	Label	Position
Parallel port IRQ select IRQ5	JP16	Pins 2 & 3 closed
Parallel port IRQ select IRQ7	JP16	Pins 1 & 2 closed
Game port enabled	JP17	Closed
Game port disabled	JP17	Open
Parallel port address select 378 - 37Fh	JP21	Pins 1 & 2 closed
Parallel port address select 278 - 27Fh	JP21	Pins 2 & 3 closed
IDE interface enabled	JP28	Closed
IDE interface disabled	JP28	Open
Floppy drive interface enabled	JP33	Open
Floppy drive interface disabled	JP33	Closed
Parity enabled	JP34	Closed
Parity disabled	JP34	Open
í Factory configured - do not alter	SW2/4	N/A
í Factory configured - do not alter	SW2/5	N/A
í Factory configured - do not alter	SW2/6	N/A
Wait state select 0 wait states	SW2/7	Off
Wait state select 1 wait state	SW2/7	On

DRAM						
Size	Bank 0	Parity 0	Bank 1	Parity 1	Bank 2	Bank 3
512KB	(4) 44256	(2) 41256	None	None	None	None
640KB	(4) 44256	(2) 41256	(4) 4464	(2) 41256	None	None
1MB	(4) 44256	(2) 41256	(4) 44256	(2) 41256	None	None
1152KB	(4) 44256	(2) 41256	(4) 4464	(2) 41256	(2) 256K x 9	None
1.5MB	(4) 44256	(2) 41256	(4) 44256	(2) 41256	(2) 256K x 9	None
1664KB	(4) 44256	(2) 41256	(4) 4464	(2) 41256	(2) 256K x 9	(2) 256K x 9
2MB	(4) 44256	(2) 41256	(4) 44256	(2) 41256	(2) 256K x 9	(2) 256K x 9
2MB	None	None	None	None	(2) 1M x 9	None
4MB	None	None	None	None	(2) 1M x 9	(2) 1M x 9

Continued on next page...

LASER COMPUTER, INC.
LASER 286S

... continued from previous page

DRAM SWITCH	
Setting	SW2/1
4464 installed in Bank 1	Off
4464 not installed in Bank 1	On

Note: Economic system uses DIP & SIMM memory and Deluxe system uses 1M x 9 SIMM memory.

DRAM SWITCH		
Setting	SW2/2	SW2/3
Economic system	On	On
Deluxe system	Off	Off

Note: Economic system uses DIP & SIMM memory and Deluxe system uses 1M x 9 SIMM memory.

DRAM SWITCH (ECONOMIC SYSTEM)					
Bank 0	Bank 1	256K SIMM	SW2/8	SW2/9	SW2/10
Installed	Not installed	Not installed	On	On	On
Installed	Installed	Not installed	On	On	Off
Installed	Installed	Bank 0	On	Off	On
Installed	Installed	Banks 0 & 1	On	Off	Off

DRAM SWITCH (DELUXE SYSTEM)					
Bank 0	Bank 1	1M SIMM	SW2/8	SW2/9	SW2/10
Not installed	Not installed	Bank 0	On	On	On
Not installed	Not installed	Banks 0 & 1	On	On	Off

SERIAL PORT IRQ			
Serial port 1	Serial port 2	JP18	JP19
í IRQ4	IRQ3	Pins 2 & 3 closed	Pins 1 & 2 closed
IRQ3	IRQ4	Pins 1 & 2 closed	Pins 2 & 3 closed

SERIAL PORT					
Serial port 1	Serial port 2	JP20	JP22	JP25	JP26
í COM1	COM2	1 & 2	2 & 3	N/A	N/A
COM1	COM3	1 & 2	N/A	2 & 3	N/A
COM1	COM4	1 & 2	N/A	N/A	2 & 3
COM2	COM1	2 & 3	1 & 2	N/A	N/A
COM2	COM3	N/A	1 & 2	2 & 3	N/A
COM2	COM4	N/A	1 & 2	N/A	2 & 3
COM3	COM1	2 & 3	N/A	1 & 2	N/A
COM3	COM2	N/A	2 & 3	1 & 2	N/A
COM3	COM4	N/A	N/A	1 & 2	2 & 3
COM4	COM1	2 & 3	N/A	N/A	1 & 2
COM4	COM2	N/A	2 & 3	N/A	1 & 2
COM4	COM3	N/A	N/A	2 & 3	1 & 2

Note: Pins designated should be in the closed position.