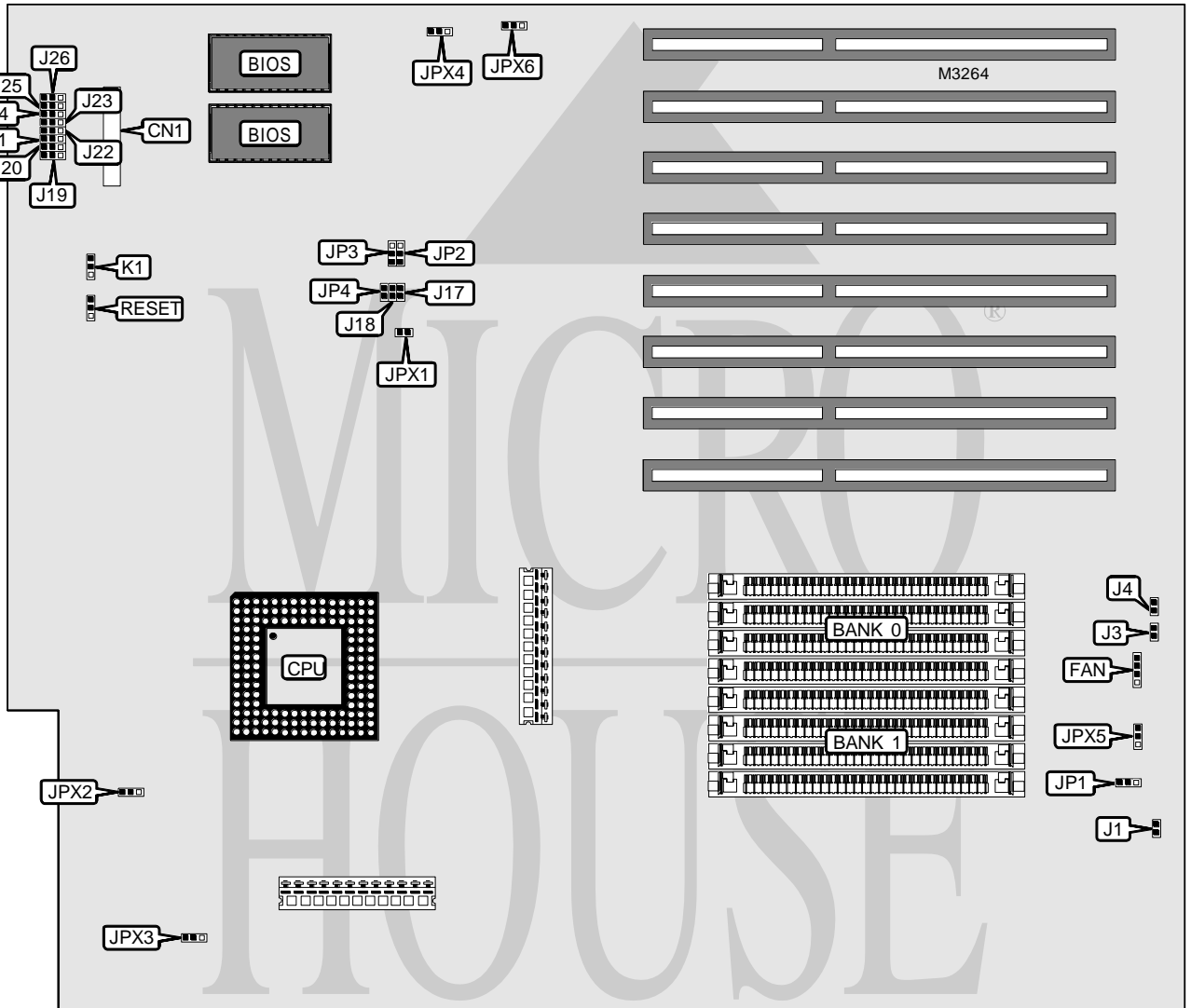


ICL DRS M95

| | |
|--------------------------|-----------------|
| Processor | 80486 |
| Processor Speed | 25MHz |
| Chip Set | Unidentified |
| Max. Onboard DRAM | 64MB |
| Cache | None |
| BIOS | Acer |
| Dimensions | 330mm x 218mm |
| I/O Options | Mouse interface |
| NPU Options | None |



| CONNECTIONS | | | |
|--------------------------|----------|--------------|----------|
| Purpose | Location | Purpose | Location |
| Mouse/keyboard interface | CN1 | Reset switch | RESET |
| Chassis fan power | FAN | | |

Continued on next page. . .

ICL

DRS M95

... continued from previous page

| USER CONFIGURABLE SETTINGS | | |
|-------------------------------------|--------|-------------------|
| Function | Jumper | Position |
| í Factory configured - do not alter | J1 | N/A |
| í Factory configured - do not alter | J3 | N/A |
| í Factory configured - do not alter | J4 | N/A |
| í Factory configured - do not alter | J17 | Closed |
| í Factory configured - do not alter | J18 | Closed |
| í Factory configured - do not alter | J19 | Pins 2 & 3 closed |
| í Factory configured - do not alter | J20 | Pins 2 & 3 closed |
| í Factory configured - do not alter | J21 | Pins 2 & 3 closed |
| í Factory configured - do not alter | J22 | Pins 2 & 3 closed |
| í Factory configured - do not alter | J23 | Pins 1 & 2 closed |
| í Factory configured - do not alter | J24 | Pins 2 & 3 closed |
| í Factory configured - do not alter | J25 | Pins 2 & 3 closed |
| í Factory configured - do not alter | J26 | Pins 2 & 3 closed |
| í Factory configured - do not alter | JP4 | Closed |
| í Factory configured - do not alter | JP1 | N/A |
| í Factory configured - do not alter | JPX1 | Closed |
| í Page normal operation | JPX2 | Pins 1 & 2 closed |
| Page always miss for debug | JPX2 | Pins 2 & 3 closed |
| í Cache normal operation | JPX3 | Pins 1 & 2 closed |
| Cache always miss for debug | JPX3 | Pins 2 & 3 closed |
| í Fast RC enabled | JPX4 | Pins 2 & 3 closed |
| Normal RC enabled | JPX4 | Pins 1 & 2 closed |
| í RAS delay select 20ns | JPX5 | Pins 2 & 3 closed |
| RAS delay select 9ns | JPX5 | Pins 1 & 2 closed |
| Password enabled | JPX6 | Pins 1 & 2 closed |
| Password disabled | JPX6 | Pins 2 & 3 closed |
| í Factory configured - do not alter | K1 | N/A |

| DRAM CONFIGURATION | | |
|--------------------|------------|------------|
| Size | Bank 0 | Bank 1 |
| 4MB | (4) 1M x 9 | None |
| 8MB | (4) 1M x 9 | (4) 1M x 9 |
| 8MB | (4) 2M x 9 | None |
| 12MB | (4) 2M x 9 | (4) 1M x 9 |
| 16MB | (4) 2M x 9 | (4) 2M x 9 |
| 16MB | (4) 4M x 9 | None |
| 20MB | (4) 4M x 9 | (4) 1M x 9 |
| 24MB | (4) 4M x 9 | (4) 2M x 9 |
| 32MB | (4) 4M x 9 | (4) 4M x 9 |
| 32MB | (4) 8M x 9 | None |
| 36MB | (4) 8M x 9 | (4) 1M x 9 |
| 40MB | (4) 8M x 9 | (4) 2M x 9 |
| 48MB | (4) 8M x 9 | (4) 4M x 9 |
| 64MB | (4) 8M x 9 | (4) 8M x 9 |

Continued on next page...

ICL

DRS M95

... continued from previous page

| BIOS CONFIGURATION | | |
|--------------------|-------------------|-------------------|
| Size | JP2 | JP3 |
| 128KB | Pins 2 & 3 closed | Pins 2 & 3 closed |
| 256KB | Pins 1 & 2 closed | Pins 2 & 3 closed |
| 512KB | Pins 1 & 2 closed | Pins 1 & 2 closed |