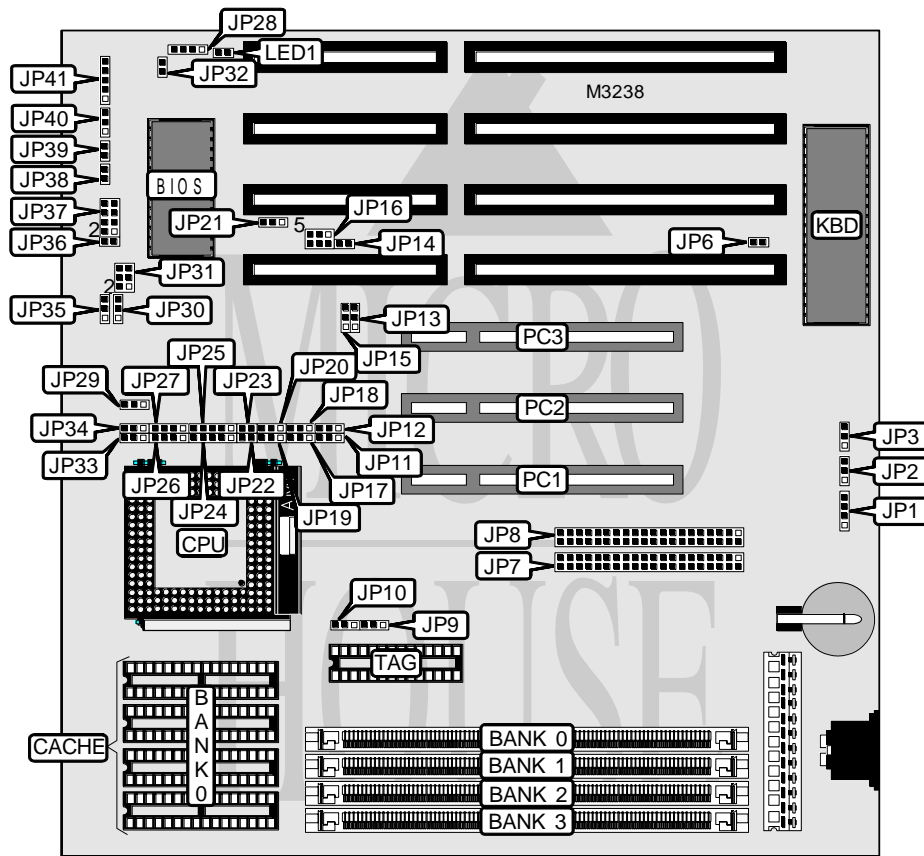


ATC/UNITRON COMPUTERS & COMPUTER PARTS

U 6921

Processor	UMC486/(SL)AM486SX/80486SX/SL80486SX/CXM7/AM486DX/(SL)AM486DX/80486DX/SL80486DX/AM486DX2/(SL)AM486D2/80486DX2/SL80486DX2/AM486DX4/(SL)486DX4/80486DX4/SL80486DX4/CXM9/P24D/P24T
Processor Speed	25/33/40/50(internal)/50/66(internal)/75(internal)/100(internal)MHz
Chip Set	SIS
Max. Onboard DRAM	128MB
Cache	128/256/512KB
BIOS	Award
Dimensions	220mm x 220mm
I/O Options	32-bit PCI slots (3), green PC connector, IDE interfaces (2)
NPU Options	None



CONNECTIONS			
Purpose	Location	Purpose	Location
External battery	JP1	Turbo LED	JP38
IDE interface 2	JP7	Reset switch	JP39
IDE interface 1	JP8	Turbo switch	JP40
Speaker	JP28	Power LED & keylock	JP41
IDE interface LED	JP32	Green PC LED	LED1
Green PC connector	JP36	32-bit PCI slots	PC1 - PC3

Continued on next page. . .

ATC/UNITRON COMPUTERS & COMPUTER PARTS

U 6921

... continued from previous page

USER CONFIGURABLE SETTINGS		
Function	Jumper	Position
í Monitor type select color	JP6	Closed
Monitor type select monochrome	JP6	Open
í Factory configured - do not alter	JP14	N/A
í Factory configured - do not alter	JP15	N/A
í Flash BIOS EPROM	JP21	Open
Flash BIOS voltage select 12v	JP21	Pins 1 & 2 closed
Flash BIOS voltage select 5v	JP21	Pins 2 & 3 closed
Turbo enabled	JP40	Pins 2 & 3 closed
Turbo disabled	JP40	Pins 1 & 2 closed

DRAM CONFIGURATION				
Size	Bank 0	Bank 1	Bank 2	Bank 3
1MB	(1) 256K x 36	None	None	None
2MB	(1) 512K x 36	None	None	None
2MB	(1) 256K x 36	(1) 256K x 36	None	None
3MB	(1) 512K x 36	(1) 256K x 36	None	None
3MB	(1) 256K x 36	(1) 256K x 36	(1) 256K x 36	None
3MB	(1) 256K x 36	(1) 512K x 36	None	None
4MB	(1) 1M x 36	None	None	None
4MB	(1) 512K x 36	(1) 256K x 36	(1) 256K x 36	None
4MB	(1) 512K x 36	(1) 512K x 36	None	None
4MB	(1) 256K x 36	(1) 256K x 36	(1) 256K x 36	(1) 256K x 36
5MB	(1) 1M x 36	(1) 256K x 36	None	None
5MB	(1) 512K x 36	(1) 256K x 36	(1) 256K x 36	(1) 256K x 36
5MB	(1) 256K x 36	(1) 512K x 36	(1) 512K x 36	None
5MB	(1) 256K x 36	(1) 1M x 36	None	None
6MB	(1) 1M x 36	(1) 256K x 36	(1) 256K x 36	None
6MB	(1) 1M x 36	(1) 512K x 36	None	None
6MB	(1) 512K x 36	(1) 512K x 36	(1) 512K x 36	None
6MB	(1) 512K x 36	(1) 1M x 36	None	None
7MB	(1) 1M x 36	(1) 256K x 36	(1) 256K x 36	(1) 256K x 36
7MB	(1) 256K x 36	(1) 512K x 36	(1) 512K x 36	(1) 512K x 36
8MB	(1) 2M x 36	None	None	None
8MB	(1) 1M x 36	(1) 512K x 36	(1) 512K x 36	None
8MB	(1) 1M x 36	(1) 1M x 36	None	None
8MB	(1) 512K x 36	(1) 512K x 36	(1) 512K x 36	(1) 512K x 36
9MB	(1) 2M x 36	(1) 256K x 36	None	None
9MB	(1) 256K x 36	(1) 1M x 36	(1) 1M x 36	None
9MB	(1) 256K x 36	(1) 2M x 36	None	None
10MB	(1) 2M x 36	(1) 256K x 36	(1) 256K x 36	None
10MB	(1) 2M x 36	(1) 512K x 36	None	None
10MB	(1) 1M x 36	(1) 512K x 36	(1) 512K x 36	(1) 512K x 36
10MB	(1) 512K x 36	(1) 1M x 36	(1) 1M x 36	None

Continued on next page...

ATC/UNITRON COMPUTERS & COMPUTER PARTS

U 6921

... continued from previous page

DRAM CONFIGURATION (CON'T)				
Size	Bank 0	Bank 1	Bank 2	Bank 3
10MB	(1) 512K x 36	(1) 2M x 36	None	None
11MB	(1) 2M x 36	(1) 256K x 36	(1) 256K x 36	(1) 256K x 36
12MB	(1) 2M x 36	(1) 512K x 36	(1) 512K x 36	None
12MB	(1) 2M x 36	(1) 1M x 36	None	None
12MB	(1) 1M x 36	(1) 1M x 36	(1) 1M x 36	None
12MB	(1) 1M x 36	(1) 2M x 36	None	None
13MB	(1) 256K x 36	(1) 1M x 36	(1) 1M x 36	(1) 1M x 36
14MB	(1) 2M x 36	(1) 512K x 36	(1) 512K x 36	(1) 512K x 36
14MB	(1) 512K x 36	(1) 1M x 36	(1) 1M x 36	(1) 1M x 36
16MB	(1) 4M x 36	None	None	None
16MB	(1) 2M x 36	(1) 1M x 36	(1) 1M x 36	None
16MB	(1) 2M x 36	(1) 2M x 36	None	None
16MB	(1) 1M x 36	(1) 1M x 36	(1) 1M x 36	(1) 1M x 36
17MB	(1) 4M x 36	(1) 256K x 36	None	None
17MB	(1) 256K x 36	(1) 2M x 36	(1) 2M x 36	None
17MB	(1) 256K x 36	(1) 4M x 36	None	None
18MB	(1) 4M x 36	(1) 256K x 36	(1) 256K x 36	None
18MB	(1) 4M x 36	(1) 512K x 36	None	None
18MB	(1) 512K x 36	(1) 2M x 36	(1) 2M x 36	None
18MB	(1) 512K x 36	(1) 4M x 36	None	None
19MB	(1) 4M x 36	(1) 256K x 36	(1) 256K x 36	(1) 256K x 36
20MB	(1) 4M x 36	(1) 512K x 36	(1) 512K x 36	None
20MB	(1) 4M x 36	(1) 1M x 36	None	None
20MB	(1) 2M x 36	(1) 1M x 36	(1) 1M x 36	(1) 1M x 36
20MB	(1) 1M x 36	(1) 2M x 36	(1) 2M x 36	None
20MB	(1) 1M x 36	(1) 4M x 36	None	None
22MB	(1) 4M x 36	(1) 512K x 36	(1) 512K x 36	(1) 512K x 36
24MB	(1) 4M x 36	(1) 1M x 36	(1) 1M x 36	None
24MB	(1) 4M x 36	(1) 2M x 36	None	None
24MB	(1) 2M x 36	(1) 2M x 36	(1) 2M x 36	None
24MB	(1) 2M x 36	(1) 4M x 36	None	None
25MB	(1) 256K x 36	(1) 2M x 36	(1) 2M x 36	(1) 2M x 36
26MB	(1) 512K x 36	(1) 2M x 36	(1) 2M x 36	(1) 2M x 36
28MB	(1) 4M x 36	(1) 1M x 36	(1) 1M x 36	(1) 1M x 36
28MB	(1) 1M x 36	(1) 2M x 36	(1) 2M x 36	(1) 2M x 36
32MB	(1) 8M x 36	None	None	None
32MB	(1) 4M x 36	(1) 2M x 36	(1) 2M x 36	None
32MB	(1) 4M x 36	(1) 4M x 36	None	None
32MB	(1) 2M x 36	(1) 2M x 36	(1) 2M x 36	(1) 2M x 36
33MB	(1) 8M x 36	(1) 256K x 36	None	None
33MB	(1) 256K x 36	(1) 4M x 36	(1) 4M x 36	None
33MB	(1) 256K x 36	(1) 8M x 36	None	None
34MB	(1) 8M x 36	(1) 256K x 36	(1) 256K x 36	None

Continued on next page. . .

ATC/UNITRON COMPUTERS & COMPUTER PARTS

U 6921

... continued from previous page

DRAM CONFIGURATION (CON'T)				
Size	Bank 0	Bank 1	Bank 2	Bank 3
34MB	(1) 8M x 36	(1) 512K x 36	None	None
34MB	(1) 512K x 36	(1) 4M x 36	(1) 4M x 36	None
34MB	(1) 512K x 36	(1) 8M x 36	None	None
35MB	(1) 8M x 36	(1) 256K x 36	(1) 256K x 36	(1) 256K x 36
36MB	(1) 8M x 36	(1) 512K x 36	(1) 512K x 36	None
36MB	(1) 8M x 36	(1) 1M x 36	None	None
36MB	(1) 1M x 36	(1) 4M x 36	(1) 4M x 36	None
36MB	(1) 1M x 36	(1) 8M x 36	None	None
38MB	(1) 8M x 36	(1) 512K x 36	(1) 512K x 36	(1) 512K x 36
40MB	(1) 8M x 36	(1) 1M x 36	(1) 1M x 36	None
40MB	(1) 8M x 36	(1) 2M x 36	None	None
40MB	(1) 4M x 36	(1) 2M x 36	(1) 2M x 36	(1) 2M x 36
40MB	(1) 2M x 36	(1) 4M x 36	(1) 4M x 36	None
40MB	(1) 2M x 36	(1) 8M x 36	None	None
44MB	(1) 8M x 36	(1) 1M x 36	(1) 1M x 36	(1) 1M x 36
48MB	(1) 8M x 36	(1) 2M x 36	(1) 2M x 36	None
48MB	(1) 8M x 36	(1) 4M x 36	None	None
48MB	(1) 4M x 36	(1) 4M x 36	(1) 4M x 36	None
48MB	(1) 4M x 36	(1) 8M x 36	None	None
49MB	(1) 256K x 36	(1) 4M x 36	(1) 4M x 36	(1) 4M x 36
50MB	(1) 512K x 36	(1) 4M x 36	(1) 4M x 36	(1) 4M x 36
52MB	(1) 1M x 36	(1) 4M x 36	(1) 4M x 36	(1) 4M x 36
56MB	(1) 8M x 36	(1) 2M x 36	(1) 2M x 36	(1) 2M x 36
56MB	(1) 2M x 36	(1) 4M x 36	(1) 4M x 36	(1) 4M x 36
64MB	(1) 8M x 36	(1) 4M x 36	(1) 4M x 36	None
64MB	(1) 8M x 36	(1) 8M x 36	None	None
64MB	(1) 4M x 36	(1) 4M x 36	(1) 4M x 36	(1) 4M x 36
65MB	(1) 256K x 36	(1) 8M x 36	(1) 8M x 36	None
66MB	(1) 512K x 36	(1) 8M x 36	(1) 8M x 36	None
68MB	(1) 1M x 36	(1) 8M x 36	(1) 8M x 36	None
72MB	(1) 2M x 36	(1) 8M x 36	(1) 8M x 36	None
80MB	(1) 8M x 36	(1) 4M x 36	(1) 4M x 36	(1) 4M x 36
80MB	(1) 4M x 36	(1) 8M x 36	(1) 8M x 36	None
96MB	(1) 8M x 36	(1) 8M x 36	(1) 8M x 36	None
97MB	(1) 256K x 36	(1) 8M x 36	(1) 8M x 36	(1) 8M x 36
98MB	(1) 512K x 36	(1) 8M x 36	(1) 8M x 36	(1) 8M x 36
100MB	(1) 1M x 36	(1) 8M x 36	(1) 8M x 36	(1) 8M x 36
104MB	(1) 2M x 36	(1) 8M x 36	(1) 8M x 36	(1) 8M x 36
112MB	(1) 4M x 36	(1) 8M x 36	(1) 8M x 36	(1) 8M x 36
128MB	(1) 8M x 36	(1) 8M x 36	(1) 8M x 36	(1) 8M x 36

Continued on next page. ...

ATC/UNITRON COMPUTERS & COMPUTER PARTS

U 6921

... continued from previous page

CACHE CONFIGURATION		
Size	Bank 0	TAG
128KB	(4) 32K x 8	(1) 8K x 8
256KB	(4) 64K x 8	(1) 32K x 8
512KB	(4) 128K x 8	(1) 32K x 8

CACHE JUMPER CONFIGURATION		
Size	JP9	JP10
128KB	Pins 1 & 2 closed	Pins 1 & 2 closed
256KB	Pins 2 & 3 closed	Pins 1 & 2 closed
512KB	Pins 2 & 3 closed	Pins 2 & 3 closed

CPU TYPE CONFIGURATION					
Type	JP11	JP12	JP17	JP18	JP19
UMC486	2 & 3	Open	Open	Open	Open
(SL)AM486SX	2 & 3	2 & 3	Open	2 & 3	1 & 2
804846SX	Open	2 & 3	Open	Open	Open
SL804846SX	Open	2 & 3	Open	Open	Open
CXM7	2 & 3	2 & 3	Open	Open	Open
AM486DX	2 & 3	2 & 3	Open	Open	1 & 2
(SL)AM486DX	2 & 3	2 & 3	Open	2 & 3	1 & 2
80486DX	2 & 3	2 & 3	Open	Open	1 & 2
SL80486DX	2 & 3	2 & 3	Open	Open	Open
AM486DX2	2 & 3	2 & 3	Open	Open	2 & 3
(SL)AM486DX2	2 & 3	2 & 3	Open	2 & 3	1 & 2
80486DX2	2 & 3	2 & 3	Open	Open	Open
SL80486DX2	2 & 3	2 & 3	Open	Open	Open
AM486DX4	2 & 3	2 & 3	Open	Open	1 & 2
(SL)AM486DX4	2 & 3	2 & 3	Open	2 & 3	1 & 2
80486DX4 (2x)	2 & 3	2 & 3	Open	Open	1 & 2
SL80486DX4 (2x)	2 & 3	2 & 3	Open	Open	Open
80486DX4 (2.5x)	2 & 3	2 & 3	Open	Open	1 & 2
SL80486DX4 (2.5x)	2 & 3	2 & 3	Open	Open	Open
80486DX4 (3x)	2 & 3	2 & 3	Open	Open	1 & 2
SL80486DX4 (3x)	2 & 3	2 & 3	Open	Open	Open
CXM9 (2x)	2 & 3	1 & 2	Open	1 & 2	Open
CXM9 (3x)	2 & 3	1 & 2	Open	1 & 2	Open
P24D (WB)	2 & 3	1 & 2	Open	1 & 2	1 & 2
P24D (WT)	2 & 3	1 & 2	Open	1 & 2	2 & 3
P24T (WB)	1 & 2	1 & 2	2 & 3	Open	Open
P24T (WT)	1 & 2	1 & 2	1 & 2	Open	Open

Note: Pins designated should be in the closed position.

Continued on next page. . .

ATC/UNITRON COMPUTERS & COMPUTER PARTS

U 6921

... continued from previous page

CPU TYPE CONFIGURATION (CON'T)					
Type	JP20	JP22	JP23	JP24	JP25
UMC486	Open	Open	Open	Open	Open
(SL)AM486SX	2 & 3	Closed	Open	4 & 5	4 & 5
804846SX	Open	Open	Open	Open	Open
SL804846SX	2 & 3	Closed	Open	1 & 2	4 & 5
CXM7	1 & 2	Closed	Open	Open	2 & 3
AM486DX	Open	Open	Open	Open	4 & 5
(SL)AM486DX	2 & 3	Closed	Open	4 & 5	4 & 5
80486DX	Open	Open	Open	Open	4 & 5
SL80486DX	2 & 3	Closed	Open	1 & 2	4 & 5
AM486DX2	Open	Open	Open	Open	4 & 5
(SL)AM486DX2	2 & 3	Closed	Open	4 & 5	4 & 5
80486DX2	2 & 3	Closed	Open	1 & 2	4 & 5
SL80486DX2	2 & 3	Closed	Open	1 & 2	4 & 5
AM486DX4	Open	Open	Open	Open	4 & 5
(SL)AM486DX4	2 & 3	Closed	Open	4 & 5	4 & 5
80486DX4 (2x)	Open	Open	Open	Open	4 & 5
SL80486DX4 (2x)	2 & 3	Closed	Open	1 & 2	4 & 5
80486DX4 (2.5x)	Open	Open	Open	Open	4 & 5
SL80486DX4 (2.5x)	2 & 3	Closed	Open	1 & 2	4 & 5
80486DX4 (3x)	Open	Open	Open	Open	4 & 5
SL80486DX4 (3x)	2 & 3	Closed	Open	1 & 2	4 & 5
CXM9 (2x)	Open	Closed	Open	2 & 3	2 & 3
CXM9 (3x)	Open	Closed	Open	2 & 3	2 & 3
P24D (WB)	2 & 3	Closed	Open	2 & 3	4 & 5
P24D (WT)	2 & 3	Closed	Open	2 & 3	4 & 5
P24T (WB)	2 & 3	Closed	Open	Open	1 & 2
P24T (WT)	2 & 3	Closed	Open	Open	1 & 2

Note: Pins designated should be in the closed position.

Continued on next page. . .

ATC/UNITRON COMPUTERS & COMPUTER PARTS

U 6921

... continued from previous page

CPU TYPE CONFIGURATION (CON'T)					
Type	JP26	JP27	JP29	JP33	JP34
UMC486	2 & 3	Open	Open	Open	Open
(SL)AM486SX	2 & 3	3 & 4	Open	Open	1 & 2
804846SX	2 & 3	Open	Open	Open	Open
SL804846SX	2 & 3	3 & 4	Open	Open	Open
CXM7	1 & 2, 3 & 4	2 & 3	Open	2 & 3	2 & 3
AM486DX	1 & 2, 3 & 4	3 & 4	Open	Open	Open
(SL)AM486DX	1 & 2, 3 & 4	3 & 4	Open	Open	1 & 2
80486DX	1 & 2, 3 & 4	3 & 4	Open	Open	Open
SL80486DX	1 & 2, 3 & 4	3 & 4	Open	Open	Open
AM486DX2	1 & 2, 3 & 4	3 & 4	Open	Open	Open
(SL)AM486DX2	1 & 2, 3 & 4	3 & 4	Open	Open	1 & 2
80486DX2	1 & 2, 3 & 4	3 & 4	Open	Open	Open
SL80486DX2	1 & 2, 3 & 4	3 & 4	Open	Open	Open
AM486DX4	1 & 2, 3 & 4	3 & 4	Open	Open	Open
(SL)AM486DX4	1 & 2, 3 & 4	3 & 4	Open	Open	1 & 2
80486DX4 (2x)	1 & 2, 3 & 4	3 & 4	2 & 3	Open	Open
SL80486DX4 (2x)	1 & 2, 3 & 4	3 & 4	2 & 3	Open	Open
80486DX4 (2.5x)	1 & 2, 3 & 4	3 & 4	1 & 2	Open	Open
SL80486DX4 (2.5x)	1 & 2, 3 & 4	3 & 4	1 & 2	Open	Open
80486DX4 (3x)	1 & 2, 3 & 4	3 & 4	Open	Open	Open
SL80486DX4 (3x)	1 & 2, 3 & 4	3 & 4	Open	Open	Open
CXM9 (2x)	1 & 2, 3 & 4	1 & 2, 3 & 4	2 & 3	Open	1 & 2
CXM9 (3x)	1 & 2, 3 & 4	1 & 2, 3 & 4	Open	Open	1 & 2
P24D (WB)	1 & 2, 3 & 4	1 & 2, 3 & 4	Open	Open	1 & 2
P24D (WT)	1 & 2, 3 & 4	1 & 2, 3 & 4	Open	Open	1 & 2
P24T (WB)	1 & 2, 3 & 4	3 & 4	Open	1 & 2	1 & 2
P24T (WT)	1 & 2, 3 & 4	3 & 4	Open	1 & 2	1 & 2

Note: Pins designated should be in the closed position.

CPU SPEED CONFIGURATION		
Speed	JP13	JP16
25MHz	Pins 1 & 2 closed	Open
33MHz	Pins 1 & 2 closed	Pins 1 & 2, 3 & 4 closed
40MHz	Pins 2 & 3 closed	Pins 1 & 2 closed
50iMHz	Pins 1 & 2 closed	Open
50MHz	Pins 2 & 3 closed	Pins 3 & 4 closed
66iMHz	Pins 1 & 2 closed	Pins 1 & 2, 3 & 4 closed
75iMHz	Pins 1 & 2 closed	Open
100iMHz	Pins 1 & 2 closed	Pins 1 & 2, 3 & 4 closed

Continued on next page. . .

ATC/UNITRON COMPUTERS & COMPUTER PARTS

U 6921

... continued from previous page

CPU VOLTAGE CONFIGURATION			
Voltage	JP30	JP31	JP35
3.3v	Pins 2 & 3 closed	Pins 5 & 6 closed	Pins 2 & 3 closed
3.45v	Pins 2 & 3 closed	Pins 3 & 4 closed	Pins 2 & 3 closed
4v	Pins 2 & 3 closed	Pins 1 & 2 closed	Pins 2 & 3 closed
5v	Pins 1 & 2 closed	Any setting	Pins 1 & 2 closed

BIOS CONFIGURATION		
Setting	JP2	JP3
CMOS memory normal operation	Pins 1 & 2 closed	Pins 1 & 2 closed
CMOS memory clear	Pins 2 & 3 closed	Pins 2 & 3 closed

GREEN PC CONFIGURATION	
Setting	JP37
Doze mode	Pins 1 & 2 closed
Suspend mode	Pins 3 & 4 closed
Standby mode	Pins 5 & 6, 7 & 8 closed