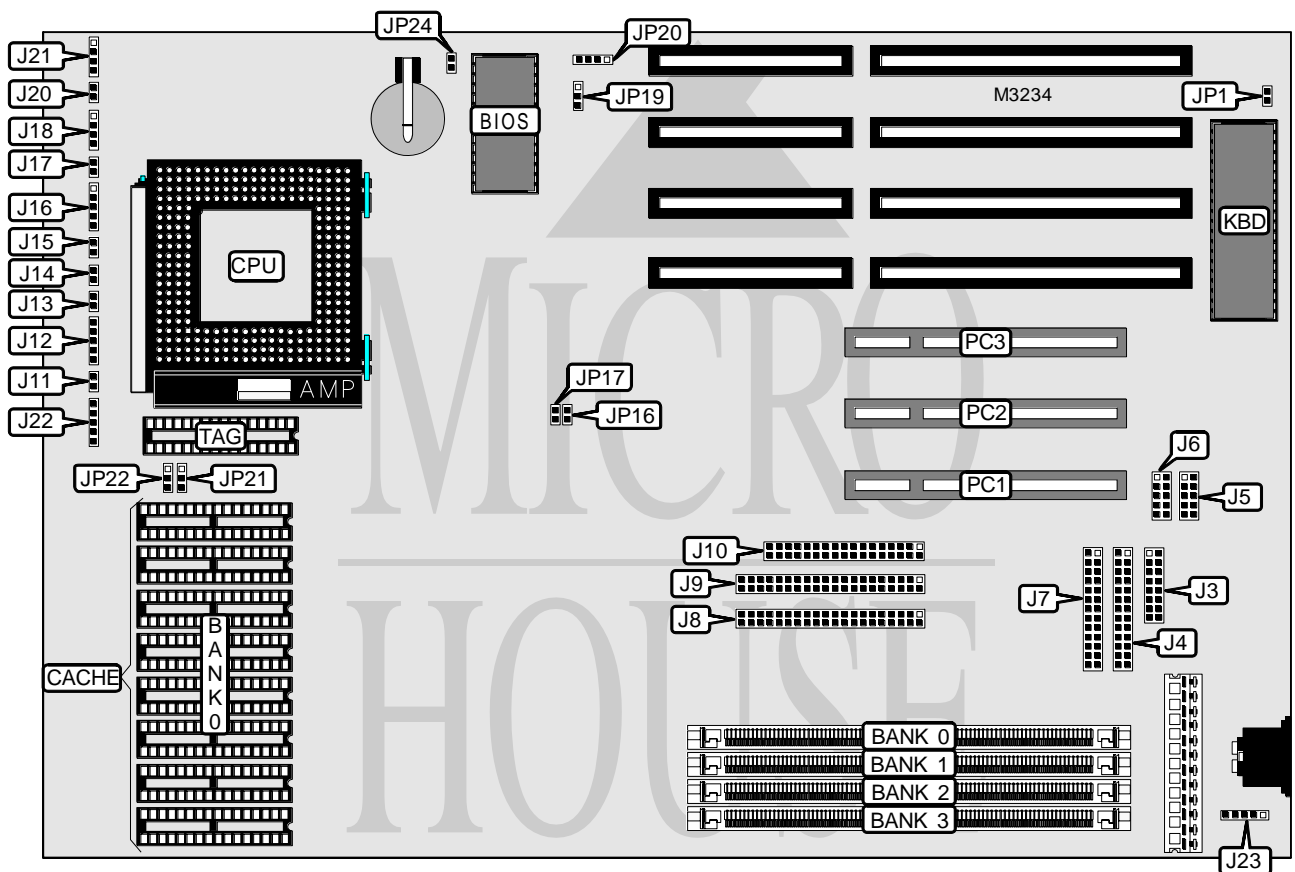


ATC/UNITRON COMPUTERS & COMPUTER PARTS

U 6992 (SQ599)

Processor	Pentium
Processor Speed	75/90/100/120/133/150MHz
Chip Set	SIS
Max. Onboard DRAM	128MB
Cache	256/512/1024KB
BIOS	Award
Dimensions	330mm x 218mm
I/O Options	32-bit PCI slots (3), floppy drive interface, green PC connector, IDE interfaces (2), parallel port, PS/2 mouse interface, serial ports (2), VGA feature connector, VGA interface, IR connector, IRDA connector
NPU Options	None



Continued on next page...

ATC/UNITRON COMPUTERS & COMPUTER PARTS

U 6992 (SQ599)

... continued from previous page

CONNECTIONS			
Purpose	Location	Purpose	Location
VGA interface	J3	Green PC connector	J13
Parallel port	J4	Power LED & keylock	J16
Serial port 1	J5	Green PC LED	J17
Serial port 2	J6	IDE interface LED	J18
VGA feature connector	J7	Turbo LED	J20
IDE interface 2	J8	Speaker	J21
IDE interface 1	J9	IRDA connector	J22
Floppy drive interface	J10	PS/2 mouse interface	J23
Reset switch	J11	External battery	JP20
IR remote connector	J12	32-bit PCI slots	PC1 - PC3

USER CONFIGURABLE SETTINGS		
Function	Jumper	Position
Monitor type select color	JP1	Open
Monitor type select monochrome	JP1	Closed
í CMOS memory normal operation	JP19	Pins 1 & 2 closed
CMOS memory clear	JP19	Pins 2 & 3 closed
í Factory configured - do not alter	JP24	N/A

DRAM CONFIGURATION				
Size	Bank 0	Bank 1	Bank 2	Bank 3
4MB	(1) 1M x 36	None	None	None
8MB	(1) 2M x 36	None	None	None
8MB	(1) 1M x 36	(1) 1M x 36	None	None
16MB	(1) 4M x 36	None	None	None
16MB	(1) 1M x 36	(1) 1M x 36	(1) 1M x 36	(1) 1M x 36
16MB	(1) 2M x 36	(1) 2M x 36	None	None
24MB	(1) 1M x 36	(1) 1M x 36	(1) 2M x 36	(1) 2M x 36
24MB	(1) 2M x 36	(1) 2M x 36	(1) 1M x 36	(1) 1M x 36
32MB	(1) 8M x 36	None	None	None
32MB	(1) 2M x 36	(1) 2M x 36	(1) 2M x 36	(1) 2M x 36
32MB	(1) 4M x 36	(1) 4M x 36	None	None
40MB	(1) 4M x 36	(1) 4M x 36	(1) 1M x 36	(1) 1M x 36
40MB	(1) 1M x 36	(1) 1M x 36	(1) 4M x 36	(1) 4M x 36
48MB	(1) 2M x 36	(1) 2M x 36	(1) 4M x 36	(1) 4M x 36
48MB	(1) 4M x 36	(1) 4M x 36	(1) 2M x 36	(1) 2M x 36
64MB	(1) 4M x 36	(1) 4M x 36	(1) 4M x 36	(1) 4M x 36
64MB	(1) 8M x 36	(1) 8M x 36	None	None

Continued on next page. ...

ATC/UNITRON COMPUTERS & COMPUTER PARTS

U 6992 (SQ599)

... continued from previous page

DRAM CONFIGURATION (CON'T)				
Size	Bank 0	Bank 1	Bank 2	Bank 3
72MB	(1) 8M x 36	(1) 8M x 36	(1) 1M x 36	(1) 1M x 36
72MB	(1) 1M x 36	(1) 1M x 36	(1) 8M x 36	(1) 8M x 36
80MB	(1) 2M x 36	(1) 2M x 36	(1) 8M x 36	(1) 8M x 36
80MB	(1) 8M x 36	(1) 8M x 36	(1) 2M x 36	(1) 2M x 36
96MB	(1) 4M x 36	(1) 4M x 36	(1) 8M x 36	(1) 8M x 36
96MB	(1) 8M x 36	(1) 8M x 36	(1) 4M x 36	(1) 4M x 36
128MB	(1) 8M x 36	(1) 8M x 36	(1) 8M x 36	(1) 8M x 36

Note: Board accepts EDO memory.

CACHE CONFIGURATION		
Size	Bank 0	TAG
256KB	(8) 32K x 8	(1) 32K x 8
512KB	(8) 64K x 8	(1) 32K x 8
1MB	(8) 128K x 8	(1) 32K x 8

CACHE JUMPER CONFIGURATION		
Size	JP21	JP22
256KB	Pins 1 & 2 closed	Pins 1 & 2 closed
512KB	Pins 2 & 3 closed	Pins 1 & 2 closed
1MB	Pins 2 & 3 closed	Pins 2 & 3 closed

CPU SPEED CONFIGURATION				
Speed	J14	J15	JP16	JP17
75MHz	Open	Open	Open	Closed
90MHz	Open	Open	Closed	Open
100MHz	Open	Open	Closed	Closed
120MHz	Open	Closed	Closed	Open
133MHz	Open	Closed	Closed	Closed
150MHz	Open	Closed	Open	Open