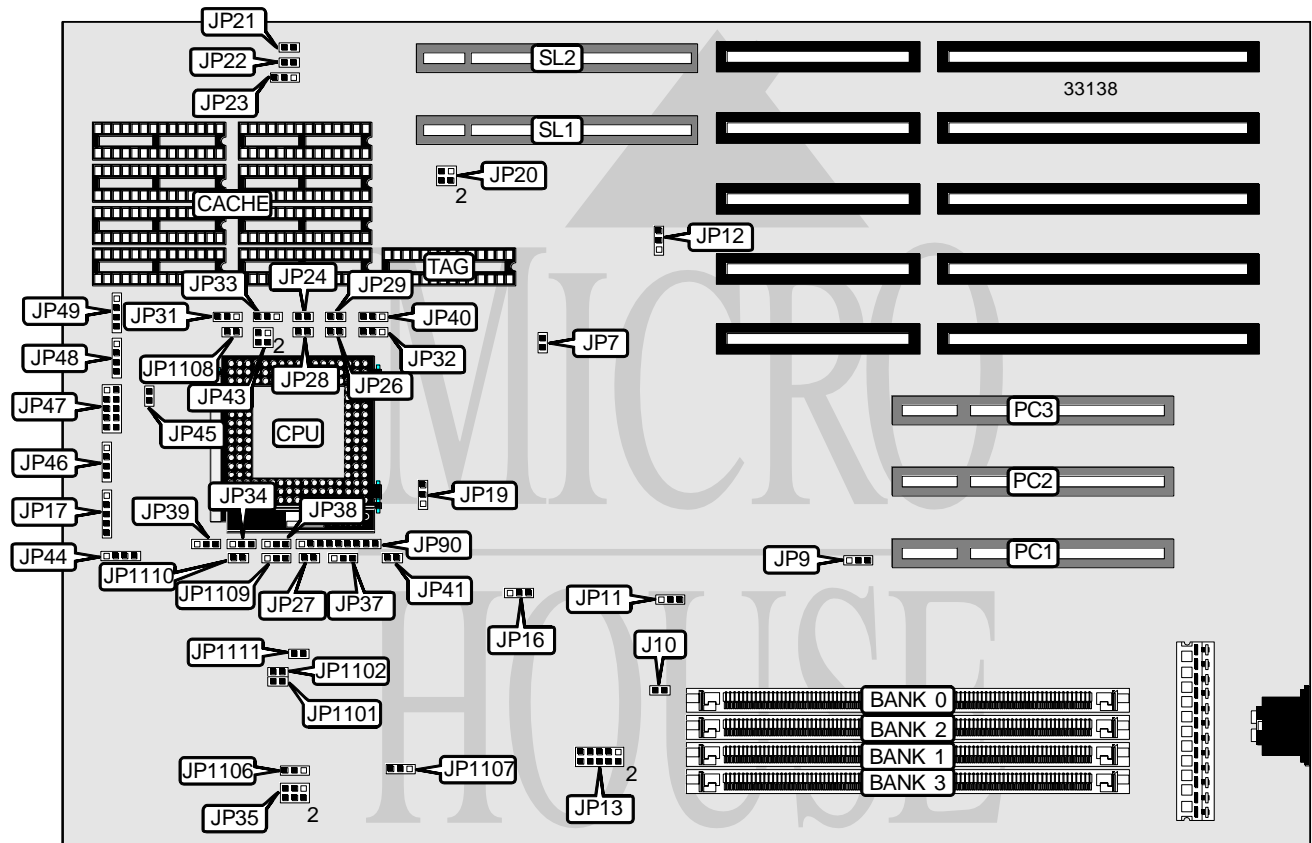


CSS LABORATORIES, INC.

PREFERRED 462 PCI/VL ESP, MB-4862

Processor	80486SX/80487SX/CX486M7/80486DX/80486DX2/80486DX4/	Pentium Overdrive
Processor Speed	8/16/25/33/40/50(internal)/50/66(internal)100(internal)MHz	
Chip Set	OPTI	
Max. Onboard DRAM	128MB	
Cache	64/128/256KB	
BIOS	Award	
Dimensions	330mm x 218mm	
I/O Options	32-bit VESA local bus slots (2), 32-bit PCI slots (3)	
NPU Options	None	



CONNECTIONS			
Purpose	Location	Purpose	Location
Power LED & keylock	JP17	Turbo switch	JP48 pins 3 & 4
IDE interface LED	JP45	External battery	JP49
Speaker	JP46	32-bit PCI slots	PC1 - PC3
Front panel connector	JP47	32-bit VESA local bus slots	SL1 & SL2
Reset switch	JP48 pins 1 & 2		

Continued on next page. . .

CSS LABORATORIES, INC.
PREFERRED 462 PCI/VL ESP, MB-4862

... continued from previous page

USER CONFIGURABLE SETTINGS		
Function	Jumper	Position
í Factory configured - do not alter	J10	N/A
í Factory configured - do not alter	JP7	N/A
í Local bus type select synchronous	JP9	pins 1 & 2 closed
Local bus type select asynchronous	JP9	pins 2 & 3 closed
PCI bus type select synchronous	JP11	pins 2 & 3 closed
PCI bus type select asynchronous	JP11	pins 1 & 2 closed
í Factory configured - do not alter	JP12	N/A
í Factory configured - do not alter	JP13	N/A
í Factory configured - do not alter	JP19	N/A
í Factory configured - do not alter	JP20	N/A
í Factory configured - do not alter	JP23	N/A
í Factory configured - do not alter	JP26	N/A
í Factory configured - do not alter	JP27	N/A
í Factory configured - do not alter	JP40	N/A
í Factory configured - do not alter	JP90	N/A
í Factory configured - do not alter	JP1106	N/A
í Factory configured - do not alter	JP1108	N/A
í Factory configured - do not alter	JP1109	N/A
í Factory configured - do not alter	JP1111	N/A

DRAM CONFIGURATION				
Size	Bank 0	Bank 1	Bank 2	Bank 3
1MB	(1) 256K x 36	NONE	NONE	NONE
2MB	(1) 256K x 36	(1) 256K x 36	NONE	NONE
2MB	(1) 512K x 36	NONE	NONE	NONE
3MB	(1) 256K x 36	(1) 256K x 36	(1) 256K x 36	NONE
4MB	(1) 256K x 36	(1) 256K x 36	(1) 256K x 36	(1) 256K x 36
4MB	(1) 512K x 36	(1) 512K x 36	NONE	NONE
4MB	(1) 1M x 36	NONE	NONE	NONE
6MB	(1) 512K x 36	(1) 512K x 36	(1) 512K x 36	NONE
8MB	(1) 512K x 36	(1) 512K x 36	(1) 512K x 36	(1) 512K x 36
8MB	(1) 1M x 36	(1) 1M x 36	NONE	NONE
8MB	(1) 2M x 36	NONE	NONE	NONE
12MB	(1) 1M x 36	(1) 1M x 36	(1) 1M x 36	NONE
16MB	(1) 1M x 36	(1) 1M x 36	(1) 1M x 36	(1) 1M x 36
16MB	(1) 2M x 36	(1) 2M x 36	NONE	NONE
16MB	(1) 4M x 36	NONE	NONE	NONE
24MB	(1) 2M x 36	(1) 2M x 36	(1) 2M x 36	NONE
32MB	(1) 2M x 36	(1) 2M x 36	(1) 2M x 36	(1) 2M x 36
32MB	(1) 4M x 36	(1) 4M x 36	NONE	NONE
32MB	(1) 8M x 36	NONE	NONE	NONE
48MB	(1) 4M x 36	(1) 4M x 36	(1) 4M x 36	NONE
64MB	(1) 4M x 36	(1) 4M x 36	(1) 4M x 36	(1) 4M x 36
64MB	(1) 8M x 36	(1) 8M x 36	NONE	NONE

Continued on next page. . .

CSS LABORATORIES, INC.

PREFERRED 462 PCI/VL ESP, MB-4862

... continued from previous page

DRAM CONFIGURATION (CON'T)				
Size	Bank 0	Bank 1	Bank 2	Bank 3
64MB	(1) 16M x 36	NONE	NONE	NONE
96MB	(1) 8M x 36	(1) 8M x 36	(1) 8M x 36	NONE
128MB	(1) 8M x 36	(1) 8M x 36	(1) 8M x 36	(1) 8M x 36
128MB	(1) 16M x 36	(1) 16M x 36	NONE	NONE

CACHE CONFIGURATION			
Size	Bank 0	Bank 1	TAG
64KB	(4) 8K x 8	(4) 8K x 8	(1) 8K x 8 or (1) 32K x 8
128KB	(4) 32K x 8	NONE	(1) 8K x 8
256KB	(4) 32K x 8	(4) 32K x 8	(1) 32K x 8
Note: The orientation of Bank 0 & 1 is unidentified.			

CACHE JUMPER CONFIGURATION				
Size	JP24	JP29	JP32	JP33
64KB	Open	Open	pins 2 & 3 closed	pins 2 & 3 closed
128KB	Open	Closed	pins 1 & 2 closed	pins 1 & 2 closed
256KB	Closed	Closed	pins 2 & 3 closed	pins 2 & 3 closed

CPU TYPE CONFIGURATION						
Type	JP17	JP28	JP34	JP37	JP38	JP39
80486SX	N/A	Open	Open	N/A	N/A	1 & 2
80487SX	N/A	Open	1 & 2	2 & 3	1 & 2	1 & 2
CX486M7	N/A	Closed	2 & 3	N/A	2 & 3	2 & 3
80486DX	Closed	Open	2 & 3	2 & 3	1 & 2	1 & 2
80486DX2	Closed	Open	2 & 3	2 & 3	1 & 2	1 & 2
80486DX4	Closed	Open	2 & 3	2 & 3	1 & 2	2 & 3
P24T	N/A	Open	N/A	N/A	N/A	2 & 3
Note: Pins designated should be in the closed position.						

CPU TYPE CONFIGURATION (CON'T)					
Type	JP41	JP43	JP44	JP1101	JP1102
80486SX	N/A	N/A	2 & 3	Closed	Closed
80487SX	N/A	N/A	1 & 2, 3 & 4	Closed	Closed
CX486M7	N/A	2 & 4	N/A	Open	Open
80486DX	Closed	N/A	1 & 2, 3 & 4	Closed	Closed
80486DX2	Closed	N/A	1 & 2, 3 & 4	Closed	Closed
80486DX4	Closed	N/A	1 & 2, 3 & 4	Open	Open
P24T	N/A	N/A	N/A	Closed	Closed
Note: Pins designated should be in the closed position.					

Continued on next page...

CSS LABORATORIES, INC.
PREFERRED 462 PCI/VL ESP, MB-4862

... continued from previous page

CPU SPEED CONFIGURATION	
Speed	JP35
8MHz	Open
16MHz	pins 3 & 4 closed
25MHz	pins 1 & 2 closed
33MHz	pins 1 & 2, 5 & 6 closed
40MHz	pins 1 & 2, 3 & 4 closed
50iMHz	pins 1 & 2 closed
50MHz	pins 1 & 2, 3 & 4, 5 & 6 closed
66iMHz	pins 1 & 2, 5 & 6 closed
100iMHz	pins 1 & 2, 5 & 6 closed

CPU SPEED CONFIGURATION (CYRIX ONLY)	
Setting	JP1110
Internal clock doubled	Closed
Internal clock standard	Open

VL BUS WAIT STATE CONFIGURATION	
Wait states	JP21
0 wait states	Open
1 wait state	Closed

VL BUS SPEED CONFIGURATION		
CPU speed	JP22	JP31
<= 33MHz	Open	pins 1 & 2 closed
> 33MHz	pins 1 & 2 closed	Open

FLASH BIOS CONFIGURATION		
Setting	JP16	JP1107
í Disabled	pins 2 & 3 closed	pins 1 & 2 closed
Enabled	pins 1 & 2 closed	pins 2 & 3 closed