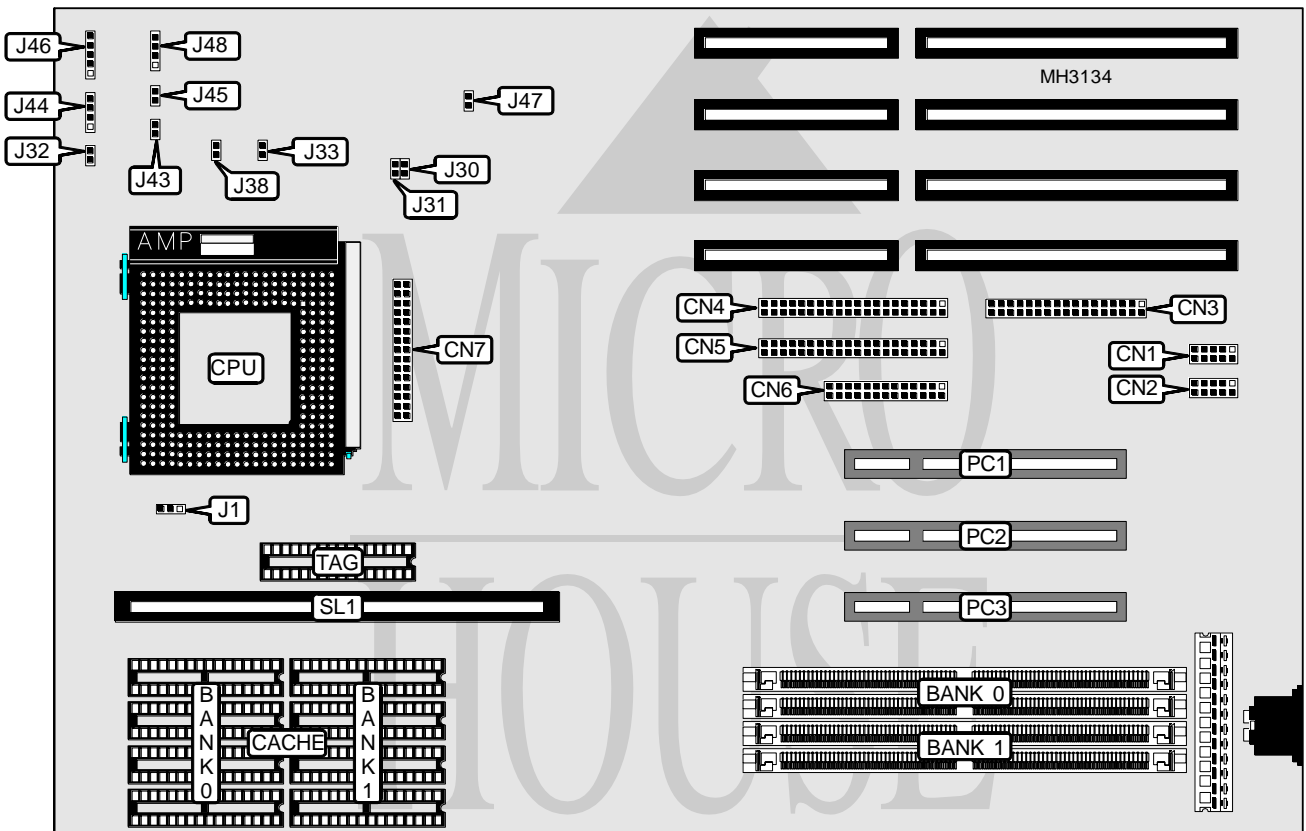


AMPTRON INTERNATIONAL, INC.

P M - 7 7 0 0

| | |
|--------------------------|--|
| Processor | Pentium |
| Processor Speed | 75/90/100/120/133/150/166MHz |
| Chip Set | Intel |
| Max. Onboard DRAM | 128MB |
| Cache | 256/512KB |
| BIOS | Award |
| Dimensions | 330mm x 218mm |
| I/O Options | 32-bit PCI slots (3), floppy drive interface, IDE interfaces (2), parallel port, serial ports (2), VRM connector, cache slot |
| NPU Options | None |



| CONNECTIONS | | | |
|------------------------|----------|---------------------|-----------|
| Purpose | Location | Purpose | Location |
| Serial port 1 | CN1 | Turbo switch | J43 |
| Serial port 2 | CN2 | IDE interface LED | J44 |
| Floppy drive interface | CN3 | Turbo LED | J45 |
| IDE interface 2 | CN4 | Power LED & keylock | J46 |
| IDE interface 1 | CN5 | Speaker | J48 |
| Parallel port | CN6 | Cache slot | SL1 |
| VRM connector | CN7 | 32-bit PCI slots | PC1 - PC3 |
| Reset switch | J32 | | |

Continued on next page. . .

AMPTRON INTERNATIONAL, INC.

P M - 7 7 0 0

... continued from previous page

| USER CONFIGURABLE SETTINGS | | |
|--------------------------------|--------|----------|
| Function | Jumper | Position |
| í CMOS memory normal operation | J47 | Open |
| CMOS memory clear | J47 | Closed |

| DRAM CONFIGURATION | | |
|--------------------|---------------|---------------|
| Size | Bank 0 | Bank 1 |
| 2MB | (2) 256K x 36 | NONE |
| 4MB | (2) 512K x 36 | NONE |
| 4MB | (2) 256K x 36 | (2) 256K x 36 |
| 6MB | (2) 512K x 36 | (2) 256K x 36 |
| 6MB | (2) 256K x 36 | (2) 512K x 36 |
| 8MB | (2) 1M x 36 | NONE |
| 8MB | (2) 512K x 36 | (2) 512K x 36 |
| 10MB | (2) 1M x 36 | (2) 256K x 36 |
| 10MB | (2) 256K x 36 | (2) 1M x 36 |
| 12MB | (2) 1M x 36 | (2) 512K x 36 |
| 12MB | (2) 512K x 36 | (2) 1M x 36 |
| 16MB | (2) 2M x 36 | NONE |
| 16MB | (2) 1M x 36 | (2) 1M x 36 |
| 18MB | (2) 2M x 36 | (2) 256K x 36 |
| 18MB | (2) 256K x 36 | (2) 2M x 36 |
| 20MB | (2) 2M x 36 | (2) 512K x 36 |
| 20MB | (2) 512K x 36 | (2) 2M x 36 |
| 24MB | (2) 2M x 36 | (2) 1M x 36 |
| 24MB | (2) 1M x 36 | (2) 2M x 36 |
| 32MB | (2) 4M x 36 | NONE |
| 32MB | (2) 2M x 36 | (2) 2M x 36 |
| 34MB | (2) 4M x 36 | (2) 256K x 36 |
| 34MB | (2) 256K x 36 | (2) 4M x 36 |
| 36MB | (2) 4M x 36 | (2) 512K x 36 |
| 36MB | (2) 512K x 36 | (2) 4M x 36 |
| 40MB | (2) 4M x 36 | (2) 1M x 36 |
| 40MB | (2) 1M x 36 | (2) 4M x 36 |
| 48MB | (2) 4M x 36 | (2) 2M x 36 |
| 48MB | (2) 2M x 36 | (2) 4M x 36 |
| 64MB | (2) 8M x 36 | NONE |
| 64MB | (2) 4M x 36 | (2) 4M x 36 |
| 66MB | (2) 8M x 36 | (2) 256K x 36 |
| 66MB | (2) 256K x 36 | (2) 8M x 36 |
| 68MB | (2) 8M x 36 | (2) 512K x 36 |
| 68MB | (2) 512K x 36 | (2) 8M x 36 |
| 72MB | (2) 8M x 36 | (2) 1M x 36 |
| 72MB | (2) 1M x 36 | (2) 8M x 36 |
| 80MB | (2) 8M x 36 | (2) 2M x 36 |

Continued on next page. . .

AMPTRON INTERNATIONAL, INC.
P M - 7 7 0 0

... continued from previous page

| DRAM CONFIGURATION (CON'T) | | |
|----------------------------|-------------|-------------|
| Size | Bank 0 | Bank 1 |
| 80MB | (2) 2M x 36 | (2) 8M x 36 |
| 96MB | (2) 8M x 36 | (2) 4M x 36 |
| 96MB | (2) 4M x 36 | (2) 8M x 36 |
| 128MB | (2) 8M x 36 | (2) 8M x 36 |

| CACHE CONFIGURATION | | | | |
|---------------------|-------------|-------------|-------------|---------------|
| Size | Bank 0 | Bank 1 | TAG | SL1 |
| 256KB (A) | (4) 32K x 8 | (4) 32K x 8 | (1) 32K x 8 | Not installed |
| 256KB (B) | NONE | NONE | NONE | Installed |
| 512KB (A) | (4) 64K x 8 | (4) 64K x 8 | (1) 32K x 8 | Not installed |
| 512KB (B) | NONE | NONE | NONE | Installed |

| CACHE JUMPER CONFIGURATION | |
|----------------------------|-------------------|
| Size | J1 |
| 256KB (A) | pins 2 & 3 closed |
| 256KB (B) | Open |
| 512KB (A) | pins 1 & 2 closed |
| 512KB (B) | Open |

| CPU SPEED CONFIGURATION | | | | |
|-------------------------|--------|--------|--------|--------|
| Speed | J30 | J31 | J33 | J38 |
| 75MHz | Closed | Closed | Open | Open |
| 90MHz | Closed | Open | Open | Open |
| 100MHz | Open | Closed | Open | Open |
| 120MHz | Closed | Open | Closed | Open |
| 133MHz | Open | Closed | Closed | Open |
| 150MHz | Closed | Closed | Open | Closed |
| 166MHz | Open | Closed | Closed | Closed |