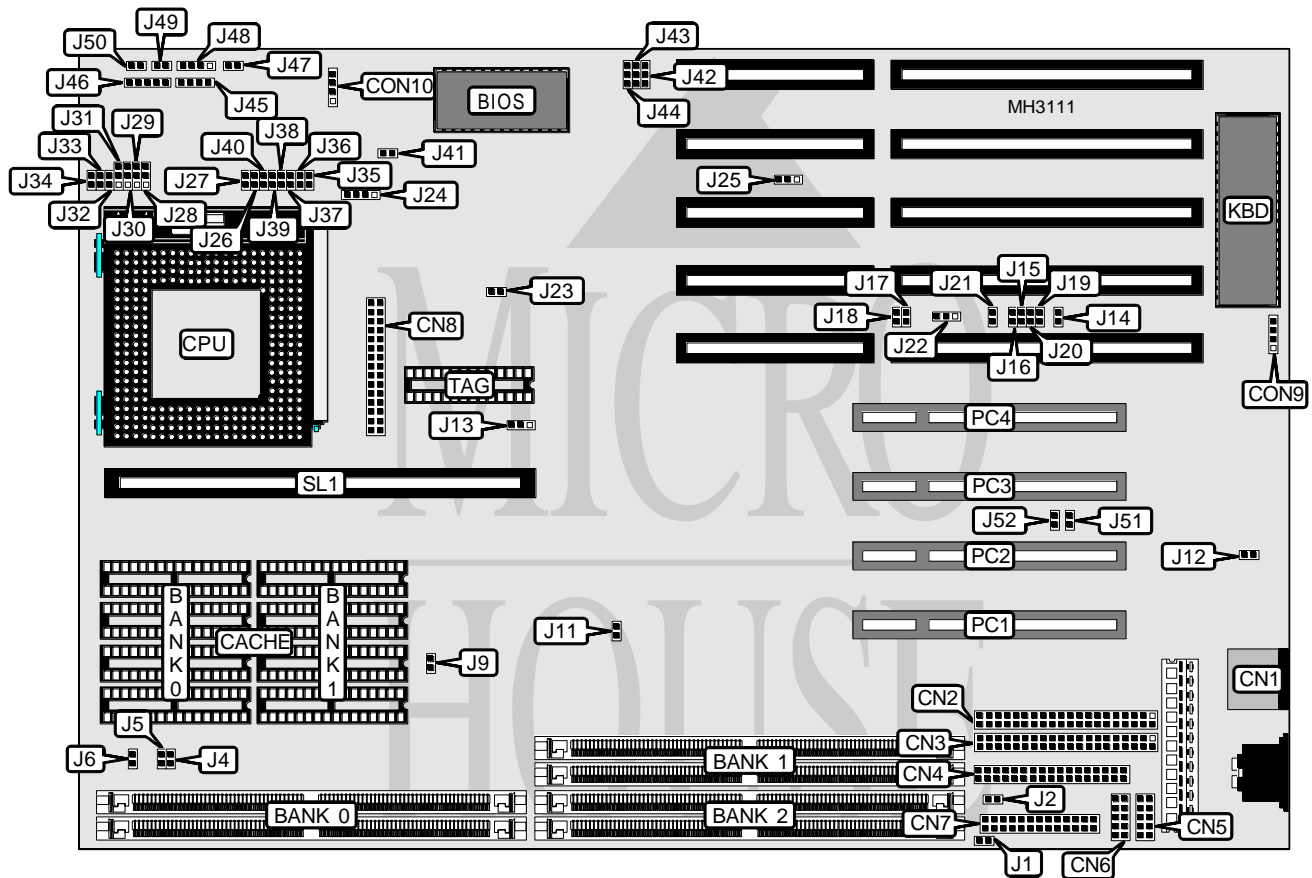


# TYAN COMPUTER CORPORATION

## S 1 4 6 8

<b>Processor</b>	Pentium
<b>Processor Speed</b>	75/90/100/120/133/150/166MHz
<b>Chip Set</b>	Intel
<b>Max. Onboard DRAM</b>	128MB
<b>Cache</b>	256/512KB
<b>BIOS</b>	AMI/Award
<b>Dimensions</b>	330mm x 218mm
<b>I/O Options</b>	32-bit PCI slots (4), floppy drive interface, IDE interfaces (2), parallel port, PS/2 mouse port, serial ports (2), cache slot, Infra Red connectors (2), VRM connector
<b>NPU Options</b>	None



Continued on next page. . .

# TYAN COMPUTER CORPORATION

## S 1 4 6 8

... continued from previous page

CONNECTIONS			
Purpose	Location	Purpose	Location
PS/2 mouse port	CN1	Infra Red interface	CON10
IDE interface 2	CN2	Speaker	J45
IDE interface 1	CN3	Power LED & keylock	J46
Floppy drive interface	CN4	Turbo switch	J47
Serial port 1	CN5	IDE interface LED	J48 pins 1 & 2
Serial port 2	CN6	Reset switch	J49
Parallel port	CN7	Turbo LED	J50
VRM connector	CN8	32-bit PCI slots	PC1 - PC4
Infra Red interface	CON9	Cache slot	SL1

USER CONFIGURABLE SETTINGS		
Function	Jumper	Position
í Factory configured - do not alter	J12	N/A
í Factory configured - do not alter	J14	N/A
í Factory configured - do not alter	J15	N/A
í Factory configured - do not alter	J16	N/A
í Factory configured - do not alter	J17	N/A
í Factory configured - do not alter	J18	N/A
í Factory configured - do not alter	J19	N/A
í Factory configured - do not alter	J20	N/A
í Factory configured - do not alter	J21	N/A
í Factory configured - do not alter	J22	pins 2 & 3 closed
í Factory configured - do not alter	J23	N/A
Chipset type select SMC 6651R (set at factory do not alter)	J25	pins 1 & 2 closed
Chipset type select SMC 6691R (set at factory do not alter)	J25	pins 2 & 3 closed
í Factory configured - do not alter	J26	Closed
í Factory configured - do not alter	J27	Closed
í Factory configured - do not alter	J34	N/A
í Factory configured - do not alter	J35	Open
í Factory configured - do not alter	J36	Closed
í Factory configured - do not alter	J37	Open
í Factory configured - do not alter	J38	Open
í Factory configured - do not alter	J39	Closed
í Factory configured - do not alter	J40	Open
í CMOS memory normal operation	J41	Open
CMOS memory clear	J41	Closed
í Factory configured - do not alter	J42	pins 1 & 2 closed
í Factory configured - do not alter	J43	pins 1 & 2 closed
í Factory configured - do not alter	J44	pins 1 & 2 closed

Continued on next page...

# TYAN COMPUTER CORPORATION

## S 1 4 6 8

... continued from previous page

DRAM CONFIGURATION				
Size	Bank 0	Bank 1	Bank 2	
8MB	(2) 1M x 32	NONE	NONE	
32MB	(2) 4M x 32	NONE	NONE	
16MB	(2) 1M x 32	(2) 1M x 32	NONE	
24MB	(2) 1M x 32	(2) 1M x 32	(2) 1M x 32	
32MB	(2) 1M x 32	(2) 1M x 32	(2) 2M x 32	
48MB	(2) 1M x 32	(2) 1M x 32	(2) 4M x 32	
80MB	(2) 1M x 32	(2) 1M x 32	(2) 8M x 32	
48MB	(2) 4M x 32	(2) 2M x 32	NONE	
56MB	(2) 4M x 32	(2) 2M x 32	(2) 1M x 32	
64MB	(2) 4M x 32	(2) 2M x 32	(2) 2M x 32	
80MB	(2) 4M x 32	(2) 2M x 32	(2) 4M x 32	
112MB	(2) 4M x 32	(2) 2M x 32	(2) 8M x 32	
32MB	NONE	(2) 4M x 32	NONE	
40MB	NONE	(2) 4M x 32	(2) 1M x 32	
48MB	NONE	(2) 4M x 32	(2) 2M x 32	
64MB	NONE	(2) 4M x 32	(2) 4M x 32	
96MB	NONE	(2) 4M x 32	(2) 8M x 32	
64MB	NONE	(2) 8M x 32	NONE	
72MB	NONE	(2) 8M x 32	(2) 1M x 32	
80MB	NONE	(2) 8M x 32	(2) 2M x 32	
96MB	NONE	(2) 8M x 32	(2) 4M x 32	
128MB	NONE	(2) 8M x 32	(2) 8M x 32	

CACHE CONFIGURATION				
Size	Bank 0	Bank 1	TAG	SL1
256KB (A)	(4) 32K x 8	(4) 32K x 8	(1) 32K x 8	Not installed
256KB (B)	NONE	NONE	NONE	Installed
512KB (A)	(4) 64K x 8	(4) 64K x 8	(1) 32K x 8	Not installed
512KB (B)	NONE	NONE	NONE	Installed

Note: If SL1 is used, Banks 0 & 1 and TAG must be removed.

CACHE JUMPER CONFIGURATION					
Size	J13	J28	J29	J30	J31
256KB	2 & 3	1 & 2	2 & 3	2 & 3	1 & 2
512KB	1 & 2	2 & 3	1 & 2	2 & 3	1 & 2
Cache module	N/A	1 & 2	1 & 2	1 & 2	1 & 2

Note: Pins designated should be in the closed position.

Continued on next page. . .

# TYAN COMPUTER CORPORATION

## S 1 4 6 8

... continued from previous page

CPU SPEED CONFIGURATION			
Speed	J24	J32	J33
75MHz	pins 1 & 2, 3 & 4 closed	Open	Open
90MHz	pins 3 & 4 closed	Open	Open
100MHz	pins 1 & 2 closed	Open	Open
120MHz	pins 3 & 4 closed	Closed	Open
133MHz	pins 1 & 2 closed	Closed	Open
150MHz	pins 1 & 2, 3 & 4 closed	Open	Closed
166MHz	pins 1 & 2 closed	Closed	Closed

CPU VOLTAGE CONFIGURATION							
Voltage	J1	J2	J4	J5	J6	J9	J11
3.3v	Open	Open	Closed	Closed	Closed	Open	Open
5v	Closed	Closed	Open	Open	Open	Closed	Closed

INFRA RED CONFIGURATION		
Setting	J51	J52
Normal I/O	pins 1 & 2 closed	pins 1 & 2 closed
IR support	pins 2 & 3 closed	pins 2 & 3 closed