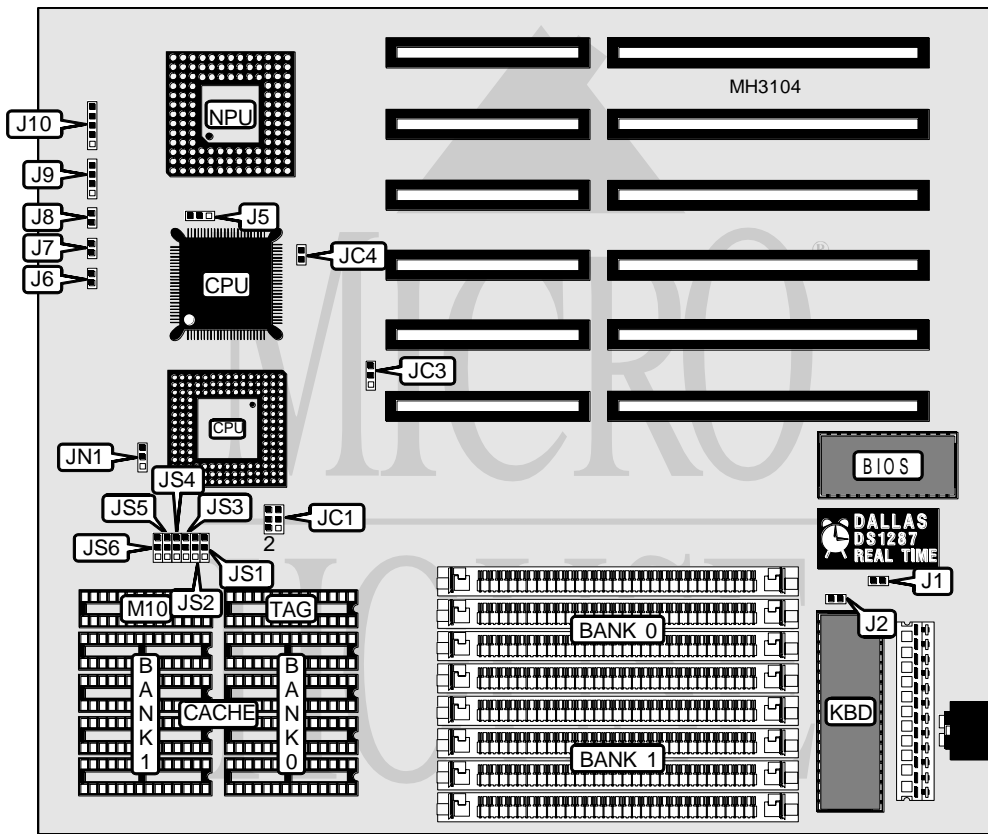


UNIDENTIFIED

386-V C - H

Processor	AM386DX/80386DX/CX486DLC
Processor Speed	33/40MHz
Chip Set	VIA
Max. Onboard DRAM	32MB
Cache	32/64/128/256KB
BIOS	Award
Dimensions	254mm x 218mm
I/O Options	None
NPU Options	80387DX/CX487DLC/3167



CONNECTIONS			
Purpose	Location	Purpose	Location
Turbo LED	J6	Speaker	J9
Turbo switch	J7	Power LED & keylock	J10
Reset switch	J8		

Continued on next page. . .

UNIDENTIFIED

386-VC-H

... continued from previous page

USER CONFIGURABLE SETTINGS		
Function	Jumper	Position
í CMOS memory normal operation	J1	Open
CMOS memory clear	J1	Closed
í Monitor type select monochrome/EGA/VGA	J2	Open
Monitor type select color	J2	Closed
í NPU synchronous with CPU	J5	pins 1 & 2 closed
NPU asynchronous with CPU	J5	pins 2 & 3 closed
í CX487DLC disabled	JN1	pins 2 & 3 closed
CX487DLC enabled	JN1	pins 1 & 2 closed

DRAM CONFIGURATION		
Size	Bank 0	Bank 1
1MB	(4) 256K x 9	NONE
2MB	(4) 256K x 9	(4) 256K x 9
4MB	(4) 1M x 9	NONE
5MB	(4) 256K x 9	(4) 1M x 9
5MB	(4) 1M x 9	(4) 256K x 9
8MB	(4) 1M x 9	(4) 1M x 9
16MB	(4) 4M x 9	NONE
17MB	(4) 256K x 9	(4) 4M x 9
17MB	(4) 4M x 9	(4) 256K x 9
20MB	(4) 1M x 9	(4) 4M x 9
20MB	(4) 4M x 9	(4) 1M x 9
32MB	(4) 4M x 9	(4) 4M x 9

CACHE CONFIGURATION				
Size	Bank 0	Bank 1	M10	TAG
32KB	(4) 8K x 8	NONE	(1) 8K x 8	(1) 8K x 8
64KB	(4) 8K x 8	(4) 8K x 8	(1) 8K x 8	(1) 8K x 8
128KB	(4) 32K x 8	NONE	(1) 8K x 8	(1) 8K x 8
256KB	(4) 32K x 8	(4) 32K x 8	(1) 32K x 8	(1) 32K x 8

Note: M10 is optional and does not have to be installed.

CACHE JUMPER CONFIGURATION						
Size	JS1	JS2	JS3	JS4	JS5	JS6
32KB	2 & 3	2 & 3	2 & 3	1 & 2	1 & 2	1 & 2
64KB	2 & 3	2 & 3	2 & 3	2 & 3	2 & 3	2 & 3
128KB	1 & 2	1 & 2	2 & 3	2 & 3	2 & 3	1 & 2
256KB	2 & 3	1 & 2	1 & 2	2 & 3	2 & 3	2 & 3

Note: Pins designated should be in the closed position.

CPU TYPE CONFIGURATION			
Type	JC1	JC3	JC4
AM386DX	Open	pins 1 & 2 closed	Closed
80386DX (PQFP)	Open	pins 2 & 3 closed	Open
80386DX (PGA)	Open	pins 1 & 2 closed	Closed
CX486DLC	Closed	pins 1 & 2 closed	Closed

