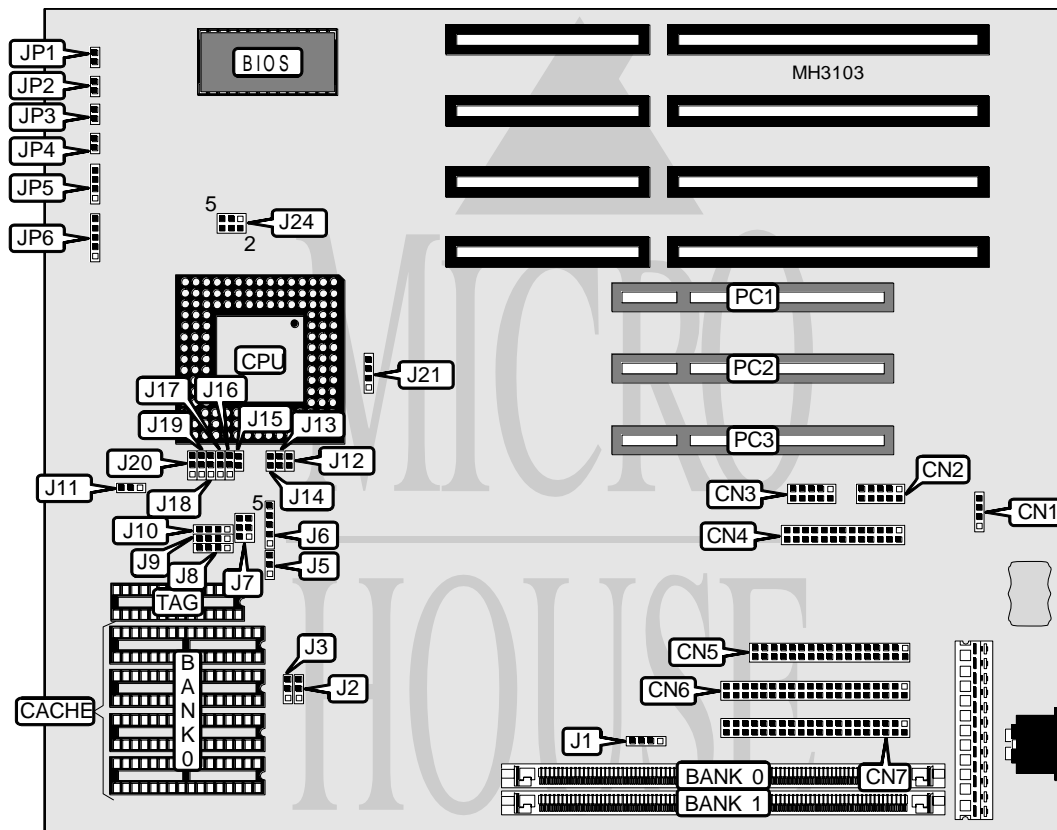


# UNIDENTIFIED

## PM486PU-S3 PCI

<b>Processor</b>	CX486SX/UMC486SX/80486SX/CX486DX/AM486DX/80486DX/CX486DX2/ AM486DX2/80486DX2/CX486DX4/AM486DX4/AM486DX4(WB)/80486DX4/ P24D/Pentium Overdrive/CXM1
<b>Processor Speed</b>	20/25/33/40/50(internal)/50/66(internal)/75(internal)/80(internal)/ 100(internal)MHz
<b>Chip Set</b>	UMC
<b>Max. Onboard DRAM</b>	64MB
<b>Cache</b>	128/256/512KB
<b>BIOS</b>	Unidentified
<b>Dimensions</b>	254mm x 218mm
<b>I/O Options</b>	32-bit PCI slots (3), green PC connector, floppy drive interface, IDE interfaces (2), parallel port, serial ports (2)
<b>NPU Options</b>	None



Continued on next page. . .

# UNIDENTIFIED

## PM486PU-S3 PCI

... continued from previous page

CONNECTIONS			
Purpose	Location	Purpose	Location
External battery	CN1	Green PC connector	JP1
Serial port 2	CN2	Turbo switch	JP2
Serial port 1	CN3	Turbo LED	JP3
Parallel port	CN4	Reset switch	JP4
Floppy drive interface	CN5	Speaker	JP5
IDE interface 2	CN6	Power LED & keylock	JP6
IDE interface 1	CN7	32-bit PCI slots	PC1 - PC3
IDE interface LED	J1		

USER CONFIGURABLE SETTINGS		
Function	Jumper	Position
í Factory configured - do not alter	J20	N/A

DRAM CONFIGURATION		
Size	Bank 0	Bank 1
1MB	(1) 256K x 36	NONE
2MB	(1) 256K x 36	(1) 256K x 36
2MB	(1) 512K x 36	NONE
3MB	(1) 256K x 36	(1) 512K x 36
4MB	(1) 512K x 36	(1) 512K x 36
4MB	(1) 1M x 36	NONE
5MB	(1) 256K x 36	(1) 1M x 36
6MB	(1) 512K x 36	(1) 1M x 36
8MB	(1) 1M x 36	(1) 1M x 36
8MB	(1) 2M x 36	NONE
10MB	(1) 512K x 36	(1) 2M x 36
12MB	(1) 1M x 36	(1) 2M x 36
16MB	(1) 2M x 36	(1) 2M x 36
20MB	(1) 1M x 36	(1) 4M x 36
24MB	(1) 2M x 36	(1) 4M x 36
32MB	(1) 4M x 36	(1) 4M x 36
32MB	(1) 8M x 36	NONE
36MB	(1) 1M x 36	(1) 8M x 36
40MB	(1) 2M x 36	(1) 8M x 36
48MB	(1) 4M x 36	(1) 8M x 36
64MB	(1) 8M x 36	(1) 8M x 36

CACHE CONFIGURATION		
Size	Bank 0	TAG
128KB	(4) 32K x 8	(1) 8K or (1) 32K x 8
256KB	(4) 64K x 8	(1) 32K x 8
512KB	(4) 128K x 8	(1) 32K x 8

Continued on next page. . .

# UNIDENTIFIED

## PM486PU-S3 PCI

... continued from previous page

CACHE JUMPER CONFIGURATION	
Size	J8
128KB	Open
256KB	pins 1 & 2 closed
512KB	pins 1 & 2, 3 & 4 closed

CPU TYPE CONFIGURATION					
Type	J2	J3	J5	J6	J7
CX486SX	2 & 3	1 & 2	Open	1 & 2, 3 & 4	3 & 4
UMC486SX	1 & 2	2 & 3	Open	Open	1 & 2
80486SX	1 & 2	1 & 2	Open	2 & 3, 4 & 5	3 & 4
CX486DX	2 & 3	1 & 2	Open	1 & 2, 3 & 4	3 & 4
AM486DX	1 & 2	2 & 3	Open	Open	1 & 2
80486DX	1 & 2	1 & 2	Open	2 & 3, 4 & 5	3 & 4
CX486DX2	2 & 3	1 & 2	Open	1 & 2, 3 & 4	3 & 4
AM486DX2	1 & 2	2 & 3	2 & 3	Open	1 & 2
80486DX2	1 & 2	1 & 2	Open	2 & 3, 4 & 5	3 & 4
CX486DX4	2 & 3	1 & 2	Open	1 & 2, 3 & 4	3 & 4
AM486DX4	1 & 2	2 & 3	Open	Open	1 & 2
AM486DX4 (WB)	1 & 2	2 & 3	2 & 3	Open	1 & 2
80486DX4	1 & 2	1 & 2	Open	2 & 3, 4 & 5	3 & 4
P24D	1 & 2	1 & 2	Open	2 & 3, 4 & 5	3 & 4
P24T	1 & 2	1 & 2	Open	2 & 3, 4 & 5	3 & 4, 5 & 6
CXM1	1 & 2	1 & 2	Open	2 & 3, 4 & 5	3 & 4

Note: Pins designated should be in the closed position.

CPU TYPE CONFIGURATION (CON'T)					
Type	J9	J10	J12	J13	J14
CX486SX	Open	2 & 3	Open	Open	Open
UMC486SX	1 & 2, 3 & 4	3 & 4	Open	Open	Open
80486SX	Open	Open	Open	Open	Open
CX486DX	3 & 4	2 & 3	Open	Open	Open
AM486DX	1 & 2, 3 & 4	3 & 4	Open	Open	Open
80486DX	3 & 4	Open	Open	Open	Open
CX486DX2	3 & 4	2 & 3	Open	Open	Open
AM486DX2	1 & 2, 3 & 4	3 & 4	Open	Open	Open
80486DX2	3 & 4	Open	Open	Open	Open
CX486DX4	3 & 4	2 & 3	Open	Open	Open
AM486DX4	1 & 2, 3 & 4	3 & 4	Open	Open	Open
AM486DX4 (WB)	1 & 2, 3 & 4	3 & 4	Open	Open	Open
80486DX4	3 & 4	Open	Open	Open	Open
P24D	3 & 4	Open	Closed	Closed	Closed
P24T	2 & 3	1 & 2	Open	Open	Open
CXM1	3 & 4	Open	Closed	Closed	Closed

Note: Pins designated should be in the closed position.

Continued on next page. . .

# UNIDENTIFIED

## PM486PU-S3 PCI

... continued from previous page

CPU TYPE CONFIGURATION (CON'T)						
Type	J15	J16	J17	J18	J19	J21
CX486SX	Open	2 & 3	1 & 2	1 & 2	2 & 3	2 & 3
UMC486SX	Open	Open	Open	2 & 3	Open	2 & 3
80486SX	Open	1 & 2	Open	1 & 2	Open	2 & 3
CX486DX	Open	2 & 3	1 & 2	1 & 2	2 & 3	1 & 2, 3 & 4
AM486DX	Open	Open	Open	2 & 3	Open	1 & 2, 3 & 4
80486DX	Open	1 & 2	Open	1 & 2	Open	1 & 2, 3 & 4
CX486DX2	Open	2 & 3	1 & 2	1 & 2	2 & 3	1 & 2, 3 & 4
AM486DX2	Open	Open	Open	2 & 3	Open	1 & 2, 3 & 4
80486DX2	Open	1 & 2	Open	1 & 2	Open	1 & 2, 3 & 4
CX486DX4	Open	2 & 3	1 & 2	1 & 2	2 & 3	1 & 2, 3 & 4
AM486DX4	Open	Open	Open	2 & 3	Open	1 & 2, 3 & 4
AM486DX4 (WB)	Open	Open	Open	2 & 3	Open	1 & 2, 3 & 4
80486DX4	Open	1 & 2	Open	1 & 2	Open	1 & 2, 3 & 4
P24D	Open	1 & 2	Open	1 & 2	Open	1 & 2, 3 & 4
P24T	Open	1 & 2	2 & 3	1 & 2	1 & 2	1 & 2, 3 & 4
CXM1	Open	1 & 2	Open	1 & 2	Open	1 & 2, 3 & 4

Note: Pins designated should be in the closed position.

CPU SPEED CONFIGURATION			
Speed	J24 pins 1 & 2	J24 pins 3 & 4	J24 pins 5 & 6
20MHz	Open	Open	Open
25MHz	Open	Open	Closed
33MHz	Closed	Closed	Closed
40MHz	Open	Closed	Closed
50iMHz	Open	Open	Closed
50MHz	Closed	Open	Open
66iMHz	Closed	Closed	Closed
75iMHz	Open	Open	Closed
80iMHz	Open	Closed	Closed
100iMHz	Closed	Closed	Closed

CPU VOLTAGE CONFIGURATION	
Voltage	J11
3.3v	pins 2 & 3 closed
3.45v	pins 2 & 3 closed
4v	pins 2 & 3 closed
5v	pins 1 & 2 closed