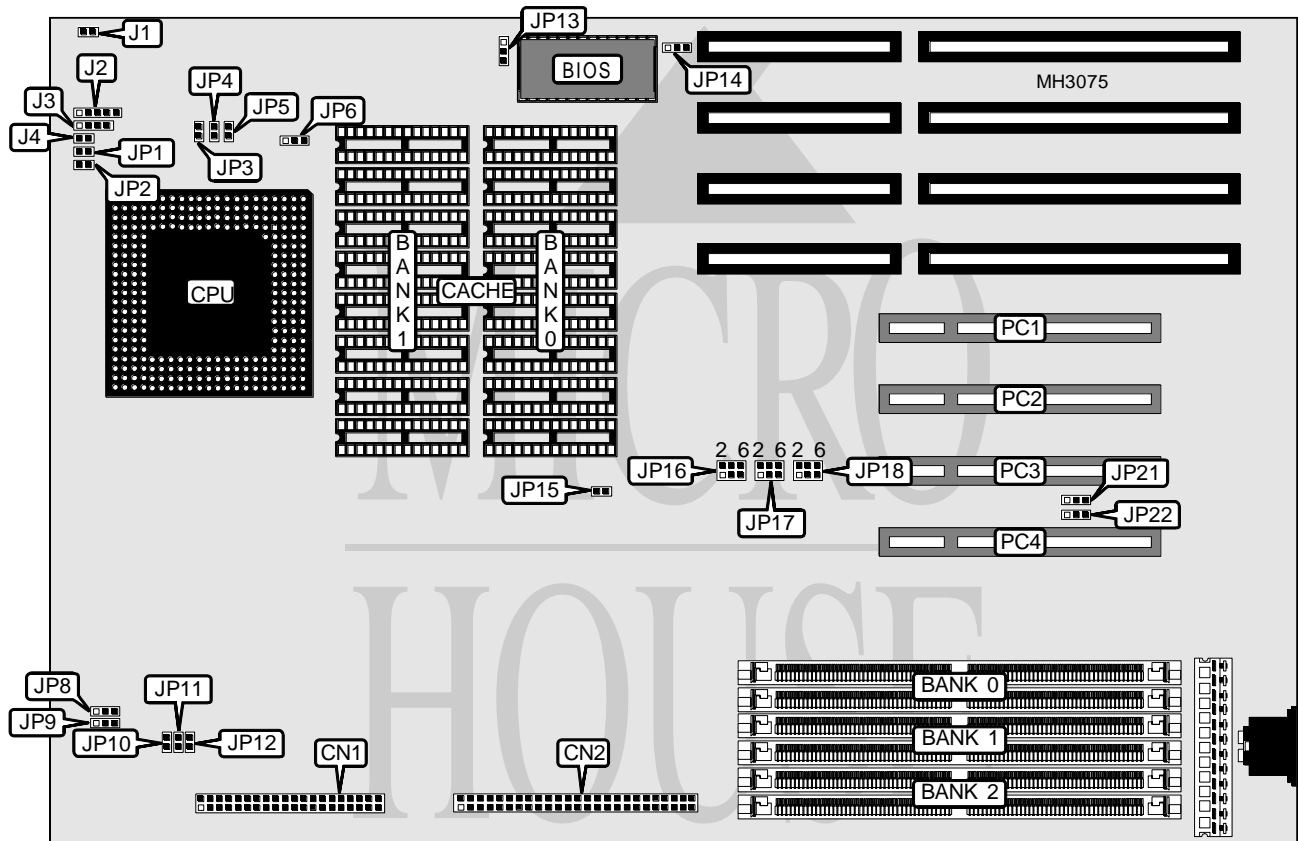


DTK COMPUTER, INC.

PAM-00311 (VER. 1.00)

Processor	Pentium
Processor Speed	60/66MHz
Chip Set	Intel
Max. Onboard DRAM	192MB
Cache	256/512KB
BIOS	AMI/Award
Dimensions	330mm x 220mm
I/O Options	32-bit PCI slots (4), IDE interface, SCSI connector
NPU Options	None



CONNECTIONS			
Purpose	Location	Purpose	Location
PCI IDE interface	CN1	Speaker	J3
SCSI interface	CN2	Reset switch	J4
Chassis fan power	J1	IDE/SCSI interface LED	JP1
Power LED & keylock	J2	32-bit PCI slots	PC1 - PC4

Continued on next page. . .

DTK COMPUTER, INC.
PAM-0031I (VER. 1.00)

... continued from previous page

USER CONFIGURABLE SETTINGS		
Function	Jumper	Position
í Monitor type select color	JP2	Closed
Monitor type select monochrome	JP2	Open
í CPU type select write back	JP3	Open
CPU type select write through	JP3	Closed
í Pipeline mode disabled	JP4	Open
Pipeline mode enabled	JP4	Closed
í CMOS memory normal operation	JP5	Open
CMOS memory clear	JP5	Closed
í IDE IRQ type select active high	JP12	Open
IDE IRQ type select active low	JP12	Closed
í BIOS type select EPROM	JP13	pins 2 & 3 closed
BIOS type select flash	JP13	pins 1 & 2 closed
í BIOS type select 27C512/27C010	JP14	pins 2 & 3 closed
BIOS type select 27C020	JP14	pins 1 & 2 closed
í IDE IRQ14 enabled	JP15	Closed
IDE IRQ14 disabled	JP15	Open
í PCI slot 4 REQ select REQ3	JP21	pins 2 & 3 closed
PCI slot 4 REQ select REQ2	JP21	pins 1 & 2 closed
í PCI slot 4 REQ select GNT3	JP22	pins 1 & 2 closed
PCI slot 4 REQ select GNT2	JP22	pins 2 & 3 closed

DRAM CONFIGURATION			
Size	Bank 0	Bank 1	Bank 2
2MB	(2) 256K x 36	NONE	NONE
4MB	(2) 256K x 36	(2) 256K x 36	NONE
6MB	(2) 256K x 36	(2) 256K x 36	(2) 256K x 36
8MB	(2) 1M x 36	NONE	NONE
10MB	(2) 1M x 36	(2) 256K x 36	NONE
10MB	(2) 256K x 36	(2) 1M x 36	NONE
12MB	(2) 1M x 36	(2) 256K x 36	(2) 256K x 36
12MB	(2) 256K x 36	(2) 256K x 36	(2) 1M x 36
12MB	(2) 256K x 36	(2) 1M x 36	(2) 256K x 36
16MB	(2) 1M x 36	(2) 1M x 36	NONE
18MB	(2) 1M x 36	(2) 256K x 36	(2) 1M x 36
18MB	(2) 1M x 36	(2) 1M x 36	(2) 256K x 36
18MB	(2) 256K x 36	(2) 1M x 36	(2) 1M x 36
24MB	(2) 1M x 36	(2) 1M x 36	(2) 1M x 36
32MB	(2) 4M x 36	NONE	NONE
34MB	(2) 4M x 36	(2) 256K x 36	NONE
34MB	(2) 256K x 36	(2) 4M x 36	NONE
36MB	(2) 4M x 36	(2) 256K x 36	(2) 256K x 36
36MB	(2) 256K x 36	(2) 256K x 36	(2) 4M x 36
36MB	(2) 256K x 36	(2) 4M x 36	(2) 256K x 36
40MB	(2) 4M x 36	(2) 1M x 36	NONE

Continued on next page...

DTK COMPUTER, INC.
PAM-00311 (VER. 1.00)

... continued from previous page

DRAM CONFIGURATION (CON'T)			
Size	Bank 0	Bank 1	Bank 2
40MB	(2) 1M x 36	(2) 4M x 36	NONE
42MB	(2) 4M x 36	(2) 256K x 36	(2) 1M x 36
42MB	(2) 4M x 36	(2) 1M x 36	(2) 256K x 36
42MB	(2) 1M x 36	(2) 256K x 36	(2) 4M x 36
42MB	(2) 1M x 36	(2) 4M x 36	(2) 256K x 36
42MB	(2) 256K x 36	(2) 1M x 36	(2) 4M x 36
42MB	(2) 256K x 36	(2) 4M x 36	(2) 1M x 36
48MB	(2) 4M x 36	(2) 1M x 36	(2) 1M x 36
48MB	(2) 1M x 36	(2) 1M x 36	(2) 4M x 36
48MB	(2) 1M x 36	(2) 4M x 36	(2) 1M x 36
64MB	(2) 4M x 36	(2) 4M x 36	NONE
64MB	(2) 8M x 36	NONE	NONE
66MB	(2) 4M x 36	(2) 256K x 36	(2) 4M x 36
66MB	(2) 4M x 36	(2) 4M x 36	(2) 256K x 36
66MB	(2) 8M x 36	(2) 256K x 36	NONE
66MB	(2) 256K x 36	(2) 4M x 36	(2) 4M x 36
68MB	(2) 8M x 36	(2) 256K x 36	(2) 256K x 36
72MB	(2) 4M x 36	(2) 1M x 36	(2) 4M x 36
72MB	(2) 4M x 36	(2) 4M x 36	(2) 1M x 36
72MB	(2) 8M x 36	(2) 1M x 36	NONE
72MB	(2) 1M x 36	(2) 4M x 36	(2) 4M x 36
74MB	(2) 8M x 36	(2) 256K x 36	(2) 1M x 36
74MB	(2) 8M x 36	(2) 1M x 36	(2) 256K x 36
80MB	(2) 8M x 36	(2) 1M x 36	(2) 1M x 36
96MB	(2) 4M x 36	(2) 4M x 36	(2) 4M x 36
96MB	(2) 8M x 36	(2) 4M x 36	NONE
98MB	(2) 8M x 36	(2) 256K x 36	(2) 4M x 36
98MB	(2) 8M x 36	(2) 4M x 36	(2) 256K x 36
104MB	(2) 8M x 36	(2) 1M x 36	(2) 4M x 36
104MB	(2) 8M x 36	(2) 4M x 36	(2) 1M x 36
128MB	(2) 8M x 36	(2) 4M x 36	(2) 4M x 36
128MB	(2) 8M x 36	(2) 8M x 36	NONE
192MB	(2) 8M x 36	(2) 8M x 36	(2) 8M x 36

Note: Page mode DRAM is used.

CACHE CONFIGURATION		
Size	Bank 0	Bank 1
256KB	(8) 32K x 8	NONE
512KB	(8) 32K x 8	(8) 32K x 8

CACHE JUMPER CONFIGURATION			
Size	JP6	JP8	JP9
None	Open	pins 1 & 2 closed	pins 1 & 2 closed
256KB	pins 2 & 3 closed	pins 1 & 2 closed	pins 2 & 3 closed
512KB	pins 1 & 2 closed	pins 2 & 3 closed	pins 2 & 3 closed

DTK COMPUTER, INC.
PAM-00311 (VER. 1.00)

... continued from previous page

IDE CONFIGURATION		
Setting	JP10	JP11
Enabled	Closed	Open
Disabled	Open	Closed

PCI IDE PIRQ CONFIGURATION	
IRQ	JP16
None	Open
PIRQ0	pins 1 & 3 closed
PIRQ1	pins 2 & 4 closed
PIRQ2	pins 3 & 5 closed
PIRQ3	pins 4 & 6 closed

SCSI GNT CONFIGURATION	
GNT	JP17
GNT0	pins 2 & 4 closed
GNT1	pins 1 & 3 closed
GNT2	pins 3 & 5 closed
GNT3	pins 4 & 6 closed

SCSI REQUEST CONFIGURATION	
REQ	JP18
REQ0	pins 1 & 3 closed
REQ1	pins 2 & 4 closed
REQ2	pins 4 & 6 closed
REQ3	pins 3 & 5 closed