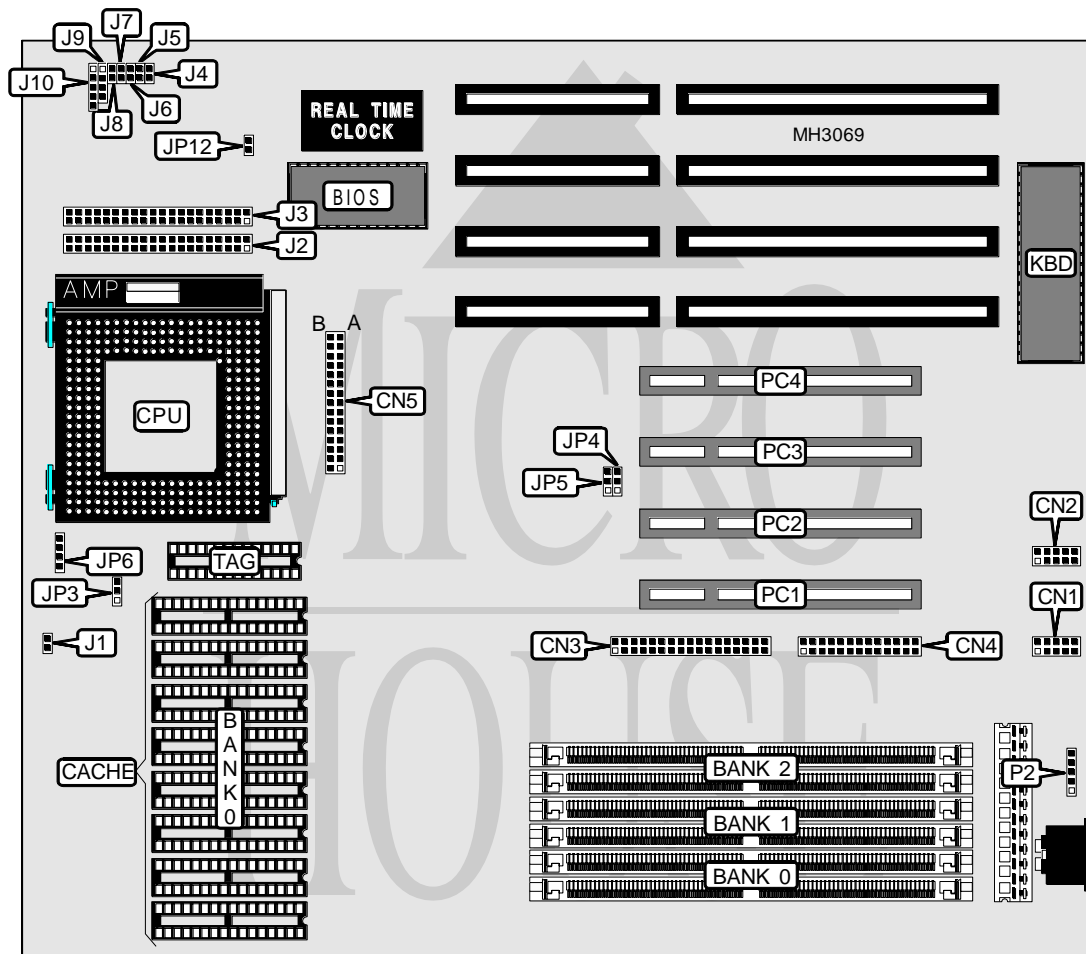


# GIGA-BYTE TECHNOLOGY CO., LTD.

## GA - 586 A T E

<b>Processor</b>	Pentium
<b>Processor Speed</b>	75/90/100/120/133/150/166/180/200MHz
<b>Chip Set</b>	Intel
<b>Max. Onboard DRAM</b>	128MB
<b>Cache</b>	256/512KB
<b>BIOS</b>	Award
<b>Dimensions</b>	254mm x 218mm
<b>I/O Options</b>	32-bit PCI slots (4), floppy drive interface, green PC connector, IDE interfaces (2), parallel port, PS/2 mouse interface, serial ports (2), VRM connector
<b>NPU Options</b>	None



Continued on next page. . .

GIGA-BYTE TECHNOLOGY CO., LTD.  
GA - 586ATE

... continued from previous page

CONNECTIONS			
Purpose	Location	Purpose	Location
Serial port 1	CN1	Green PC LED	J5
Serial port 2	CN2	Reset switch	J6
Floppy drive interface	CN3	Turbo switch	J7
Parallel port	CN4	Turbo LED	J8
VRM connector	CN5	Speaker	J9
Chassis fan power	J1	Power LED & keylock	J10
IDE interface 1	J2	PS/2 mouse interface	P2
IDE interface 2	J3	32-bit PCI slots	PC1 - PC4
Green PC connector	J4		

USER CONFIGURABLE SETTINGS		
Function	Jumper	Position
í Factory configured - do not alter	JP12	N/A

DRAM CONFIGURATION			
Size	Bank 0	Bank 1	Bank 2
8MB	(2) 1M x 32	NONE	NONE
16MB	(2) 1M x 32	(2) 1M x 32	NONE
16MB	(2) 2M x 32	NONE	NONE
24MB	(2) 1M x 32	(2) 1M x 32	(2) 1M x 32
24MB	(2) 2M x 32	(2) 1M x 32	NONE
32MB	(2) 4M x 32	NONE	NONE
32MB	(2) 2M x 32	(2) 1M x 32	(2) 1M x 32
40MB	(2) 4M x 32	(2) 1M x 32	NONE
40MB	(2) 2M x 32	(2) 1M x 32	(2) 2M x 32
48MB	(2) 4M x 32	(2) 1M x 32	(2) 1M x 32
48MB	(2) 1M x 32	(2) 1M x 32	(2) 4M x 32
48MB	(2) 1M x 32	(2) 4M x 32	(2) 1M x 32
56MB	(2) 2M x 32	(2) 1M x 32	(2) 4M x 32
56MB	(2) 2M x 32	(2) 4M x 32	(2) 1M x 32
64MB	(2) 8M x 32	NONE	NONE
64MB	(2) 2M x 32	(2) 4M x 32	(2) 2M x 32
72MB	(2) 4M x 32	(2) 1M x 32	(2) 4M x 32
72MB	(2) 4M x 32	(2) 4M x 32	(2) 1M x 32
72MB	(2) 1M x 32	(2) 4M x 32	(2) 4M x 32
72MB	(2) 8M x 32	(2) 1M x 32	NONE
80MB	(2) 8M x 32	(2) 1M x 32	(2) 1M x 32
80MB	(2) 2M x 32	(2) 4M x 32	(2) 4M x 32
88MB	(2) 2M x 32	(2) 1M x 32	(2) 8M x 32
88MB	(2) 8M x 32	(2) 1M x 32	(2) 2M x 32
96MB	(2) 4M x 32	(2) 4M x 32	(2) 4M x 32
104MB	(2) 8M x 32	(2) 1M x 32	(2) 4M x 32
104MB	(2) 8M x 32	(2) 4M x 32	(2) 1M x 32
112MB	(2) 2M x 32	(2) 4M x 32	(2) 8M x 32

Continued on next page. . .

# GIGA-BYTE TECHNOLOGY CO., LTD.

## GA - 5 8 6 A T E

... continued from previous page

DRAM CONFIGURATION (CON'T)			
Size	Bank 0	Bank 1	Bank 2
112MB	(2) 8M x 32	(2) 4M x 32	(2) 2M x 32
128MB	(2) 8M x 32	(2) 4M x 32	(2) 4M x 32

CACHE CONFIGURATION		
Size	Bank 0	TAG
256KB	(8) 32K x 8	(1) 8K or (1) 32K x 8
512KB	(8) 64K x 8	(1) 16K or (1) 32K x 8

CACHE JUMPER CONFIGURATION	
Size	JP3
256KB	pins 1 & 2 closed
512KB	pins 2 & 3 closed

CPU SPEED CONFIGURATION			
Speed	JP4	JP5	JP6
75MHz	pins 2 & 3 closed	pins 2 & 3 closed	Open
90MHz	pins 1 & 2 closed	pins 1 & 2 closed	Open
100MHz	pins 1 & 2 closed	pins 2 & 3 closed	Open
120MHz	pins 1 & 2 closed	pins 1 & 2 closed	pins 1 & 2 closed
133MHz	pins 1 & 2 closed	pins 2 & 3 closed	pins 1 & 2 closed
150MHz	pins 1 & 2 closed	pins 1 & 2 closed	pins 1 & 2, 3 & 4 closed
166MHz	pins 1 & 2 closed	pins 2 & 3 closed	pins 1 & 2, 3 & 4 closed
180MHz	pins 1 & 2 closed	pins 1 & 2 closed	pins 3 & 4 closed
200MHz	pins 1 & 2 closed	pins 2 & 3 closed	pins 3 & 4 closed

Note: The location of pin 1 on JP6 is unidentified.

VOLTAGE REGULATOR MODULE CONFIGURATION	
Voltage	CN5
3.3v	pins A6 & A7, B6 & B7 closed
2.5v/3.3v	VRM installed