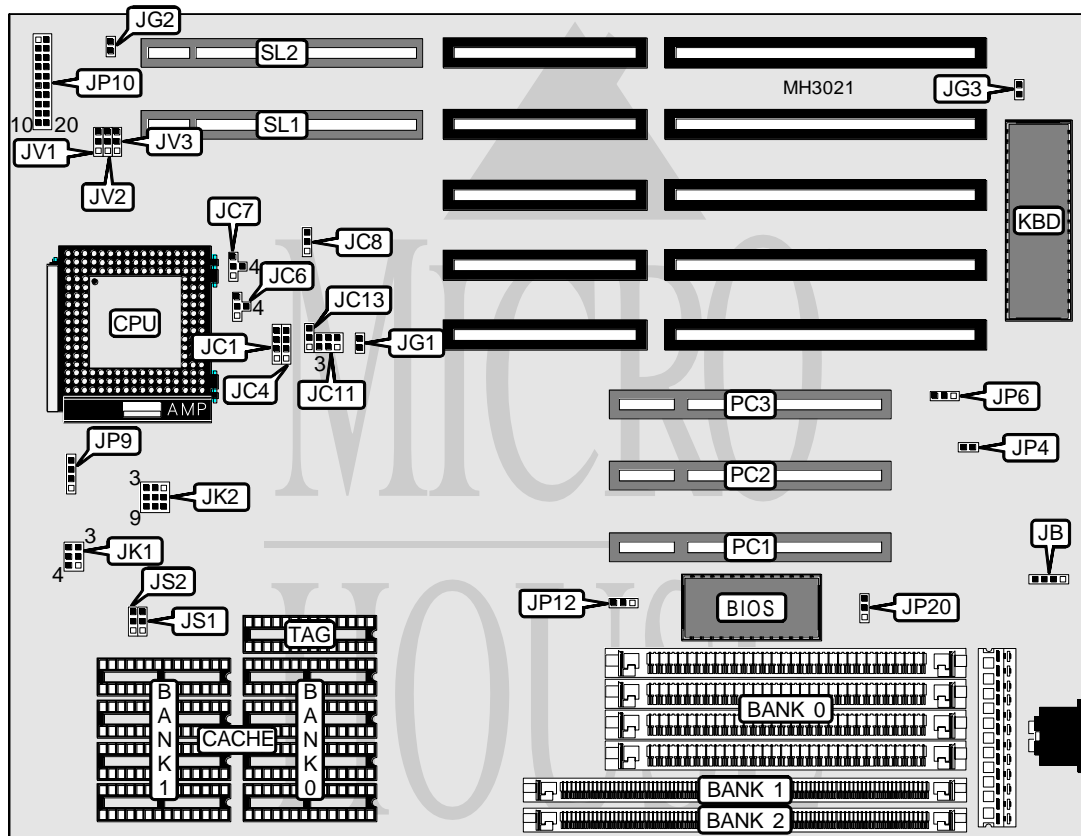


MICRO-STAR INTERNATIONAL CO., LTD.

MS - 4 1 3 4

Processor	AM486SX/80486SX/SL80486SX/CX486M7/AM486DX/80486DX/SL80486DX/ AM486DX2/80486DX2/SL80486DX2
Processor Speed	25/33/40/50(internal)/66(internal)MHz
Chip Set	ALI
Max. Onboard DRAM	128MB
Cache	128/256KB
BIOS	Award/Phoenix
Dimensions	270mm x 220mm
I/O Options	32-bit VESA local bus slots (2), 32-bit PCI slots (3), green PC connector
NPU Options	None



CONNECTIONS

Purpose	Location	Purpose	Location
External battery	JB	Speaker	JP10 pins 7 - 10
Green PC connector	JG1	Turbo LED	JP10 pins 12 & 13
Green PC connector (monitor)	JG2	Turbo switch	JP10 pins 15 - 17
Green PC LED	JG3	Reset switch	JP10 pins 19 & 20
Chassis fan power	JP9	32-bit PCI slots	PC1 - PC3
Power LED & keylock	JP10 pins 1 - 5	32-bit VESA bus slots	SL1 & SL2

Continued on next page. . .

MICRO-STAR INTERNATIONAL CO., LTD.
MS - 4 1 3 4

... continued from previous page

USER CONFIGURABLE SETTINGS		
Function	Jumper	Position
í Battery type select internal	JB	pins 2 & 3 closed
Battery type select external	JB	Closed
í PCI slot 1 SCSI controller select NCR 53C810 only	JP6	pins 2 & 3 closed
PCI slot 1 SCSI controller select any controller installed	JP6	pins 1 & 2 closed
í BIOS type select EPROM	JP20	Open
BIOS type select 5v flash	JP20	pins 2 & 3 closed
BIOS type select 12v flash	JP20	pins 1 & 2 closed

DRAM CONFIGURATION			
Size	Bank 0	Bank 1	Bank 2
1MB	(4) 256K x 9	NONE	NONE
1MB	NONE	(1) 256K x 36	NONE
2MB	NONE	(1) 512K x 36	NONE
2MB	(4) 256K x 9	(1) 256K x 36	NONE
3MB	(4) 256K x 9	(1) 256K x 36	(1) 256K x 36
4MB	(4) 1M x 9	NONE	NONE
4MB	NONE	(1) 1M x 36	NONE
5MB	(4) 1M x 9	(1) 256K x 36	NONE
5MB	(4) 256K x 9	(1) 1M x 36	NONE
6MB	(4) 1M x 9	(1) 256K x 36	(1) 256K x 36
8MB	NONE	(1) 2M x 36	NONE
8MB	(4) 1M x 9	(1) 1M x 36	NONE
9MB	(4) 256K x 9	(1) 1M x 36	(1) 1M x 36
9MB	(4) 256K x 9	(1) 2M x 36	NONE
12MB	(4) 1M x 9	(1) 1M x 36	(1) 1M x 36
12MB	(4) 1M x 9	(1) 2M x 36	NONE
16MB	(4) 4M x 9	NONE	NONE
16MB	NONE	(1) 4M x 36	NONE
17MB	(4) 4M x 9	(1) 256K x 36	NONE
17MB	(4) 256K x 9	(1) 2M x 36	(1) 2M x 36
17MB	(4) 256K x 9	(1) 4M x 36	NONE
18MB	(4) 4M x 9	(1) 256K x 36	(1) 256K x 36
20MB	(4) 4M x 9	(1) 1M x 36	NONE
20MB	(4) 1M x 9	(1) 2M x 36	(1) 2M x 36
20MB	(4) 1M x 9	(1) 4M x 36	NONE
24MB	(4) 4M x 9	(1) 1M x 36	(1) 1M x 36
24MB	(4) 4M x 9	(1) 2M x 36	NONE
32MB	NONE	(1) 8M x 36	NONE
32MB	(4) 4M x 9	(1) 2M x 36	(1) 2M x 36
32MB	(4) 4M x 9	(1) 4M x 36	NONE
33MB	(4) 256K x 9	(1) 4M x 36	(1) 4M x 36
33MB	(4) 256K x 9	(1) 8M x 36	NONE
36MB	(4) 1M x 9	(1) 4M x 36	(1) 4M x 36
36MB	(4) 1M x 9	(1) 8M x 36	NONE

Continued on next page...

MICRO-STAR INTERNATIONAL CO., LTD.

MS - 4134

... continued from previous page

DRAM CONFIGURATION (CON'T)			
Size	Bank 0	Bank 1	Bank 2
48MB	(4) 4M x 9	(1) 4M x 36	(1) 4M x 36
48MB	(4) 4M x 9	(1) 8M x 36	NONE
64MB	(4) 16M x 9	NONE	NONE
65MB	(4) 16M x 9	(1) 256K x 36	NONE
65MB	(4) 256K x 9	(1) 8M x 36	(1) 8M x 36
66MB	(4) 16M x 9	(1) 256K x 36	(1) 256K x 36
68MB	(4) 16M x 9	(1) 1M x 36	NONE
68MB	(4) 1M x 9	(1) 8M x 36	(1) 8M x 36
72MB	(4) 16M x 9	(1) 1M x 36	(1) 1M x 36
72MB	(4) 16M x 9	(1) 2M x 36	NONE
80MB	(4) 16M x 9	(1) 2M x 36	(1) 2M x 36
80MB	(4) 16M x 9	(1) 4M x 36	NONE
80MB	(4) 4M x 9	(1) 8M x 36	(1) 8M x 36
96MB	(4) 16M x 9	(1) 4M x 36	(1) 4M x 36
96MB	(4) 16M x 9	(1) 8M x 36	NONE
128MB	(4) 16M x 9	(1) 8M x 36	(1) 8M x 36

CACHE CONFIGURATION			
Size	Bank 0	Bank 1	TAG
128KB	(4) 32K x 8	NONE	(1) 8K x 8
256KB (A)	(4) 32K x 8	(4) 32K x 8	(1) 32K x 8
256KB (B)	(4) 64K x 8	NONE	(1) 32K x 8

CACHE JUMPER CONFIGURATION		
Size	JS1	JS2
128KB	pins 1 & 2 closed	pins 2 & 3 closed
256KB (A)	pins 2 & 3 closed	pins 1 & 2 closed
256KB (B)	pins 2 & 3 closed	pins 2 & 3 closed

CPU TYPE CONFIGURATION			
Type	JC1	JC4	JC6
AM486SX	pins 2 & 3 closed	pins 2 & 3 closed	pins 2 & 3 closed
80486SX	pins 2 & 3 closed	pins 2 & 3 closed	pins 2 & 3 closed
SL80486SX	pins 2 & 3 closed	pins 3 & 4 closed	pins 2 & 3 closed
CX486M7	pins 1 & 2, 3 & 4 closed	1 & 2, 3 & 4	pins 2 & 4 closed
AM486DX	pins 1 & 2, 3 & 4 closed	pins 2 & 3 closed	pins 2 & 3 closed
80486DX	pins 1 & 2, 3 & 4 closed	pins 2 & 3 closed	pins 2 & 3 closed
SL80486DX	pins 1 & 2, 3 & 4 closed	pins 3 & 4 closed	pins 2 & 3 closed
AM486DX2	pins 1 & 2, 3 & 4 closed	pins 2 & 3 closed	pins 2 & 3 closed
80486DX2	pins 1 & 2, 3 & 4 closed	pins 2 & 3 closed	pins 2 & 3 closed
SL80486DX2	pins 1 & 2, 3 & 4 closed	pins 3 & 4 closed	pins 2 & 3 closed

Continued on next page. . .

MICRO-STAR INTERNATIONAL CO., LTD.
MS - 4 1 3 4

... continued from previous page

CPU TYPE CONFIGURATION (CON'T)				
Type	JC7	JC8	JC11	JC13
AM486SX	pins 2 & 3 closed	pins 2 & 3 closed	Open	pins 1 & 2 closed
80486SX	pins 2 & 3 closed	pins 2 & 3 closed	Open	pins 1 & 2 closed
SL80486SX	pins 2 & 3 closed	pins 2 & 3 closed	Open	pins 1 & 2 closed
CX486M7	pins 2 & 4 closed	pins 1 & 2 closed	pins 3 & 6 closed	pins 2 & 3 closed
AM486DX	pins 2 & 3 closed	pins 2 & 3 closed	Open	pins 1 & 2 closed
80486DX	pins 2 & 3 closed	pins 2 & 3 closed	Open	pins 1 & 2 closed
SL80486DX	pins 2 & 3 closed	pins 2 & 3 closed	Open	pins 1 & 2 closed
AM486DX2	pins 2 & 3 closed	pins 2 & 3 closed	Open	pins 1 & 2 closed
80486DX2	pins 2 & 3 closed	pins 2 & 3 closed	Open	pins 1 & 2 closed
SL80486DX2	pins 2 & 3 closed	pins 2 & 3 closed	Open	pins 1 & 2 closed

CPU SPEED CONFIGURATION		
Speed	JK1	JK2
25MHz	pins 1 & 4, 2 & 5 closed	pins 1 & 4, 2 & 5, 3 & 6 closed
33MHz	pins 1 & 4, 3 & 6 closed	pins 1 & 4, 2 & 5, 3 & 6 closed
40MHz	pins 2 & 5 closed	pins 4 & 7, 5 & 8, 6 & 9 closed
50iMHz	pins 1 & 4, 2 & 5 closed	pins 1 & 4, 2 & 5, 3 & 6 closed
66iMHz	pins 1 & 4, 3 & 6 closed	pins 1 & 4, 2 & 5, 3 & 6 closed

BUS SPEED CONFIGURATION			
CPU speed	JV1	JV2	JV3
<= 33MHz	pins 2 & 3 closed	pins 1 & 2 closed	pins 1 & 2 closed
> 33MHz	pins 2 & 3 closed	pins 2 & 3 closed	pins 1 & 2 closed

PCI SLOT 2 CONFIGURATION		
Setting	JP4	JP12
Falling edge sensitive interrupt	Closed	pins 2 & 3 closed
Rising edge sensitive interrupt	Closed	pins 1 & 2 closed
Low active level trigger interrupt (IRQ14)	Closed	Open
Low active level trigger interrupt	Closed	pins 2 & 3 closed
No card installed	Closed	Open