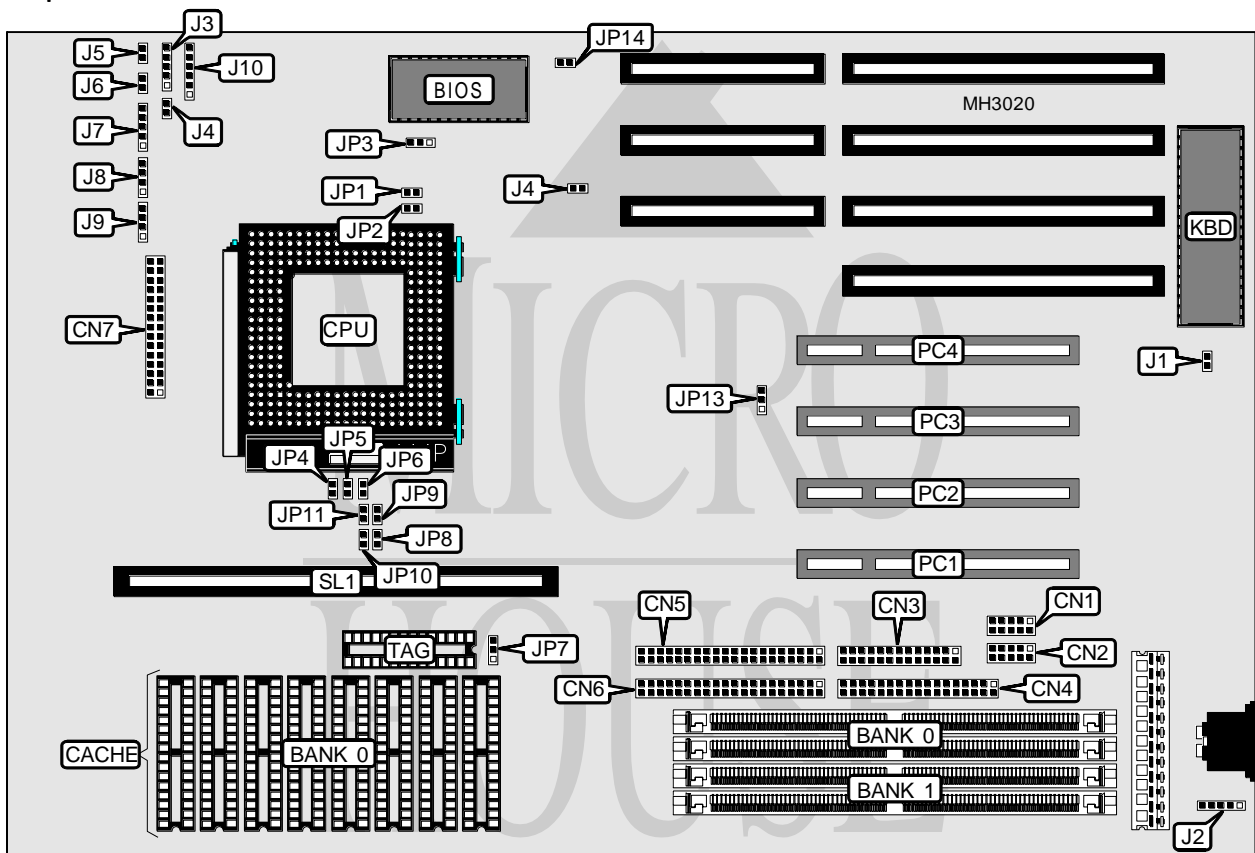


UNIDENTIFIED

SQ-595

Processor	Pentium
Processor Speed	75/90/100/120/133/150MHz
Chip Set	Intel
Max. Onboard DRAM	128MB
Cache	256/512KB
BIOS	Award
Dimensions	330mm x 218mm
I/O Options	32-bit PCI slots (4), floppy drive interface, green PC connector, IDE interfaces (2), parallel port, PS/2 mouse interface, serial ports (2), VRM module connector, cache slot
NPU Options	None



CONNECTIONS			
Purpose	Location	Purpose	Location
Serial port 2	CN1	Green PC connector	J4
Serial port 1	CN2	Reset switch	J5
Parallel port	CN3	Green PC LED	J6
Floppy drive interface	CN4	Power LED & keylock	J7
IDE interface 2	CN5	IDE interface LED	J8
IDE interface 1	CN6	Speaker	J9
VRM module connector	CN7	IRDA connector	J10
PS/2 mouse interface	J2	32-bit PCI slots	PC1 - PC4
IR remote connector	J3	Cache slot	SL1

Continued on next page. . .

UNIDENTIFIED

SQ-595

... continued from previous page

USER CONFIGURABLE SETTINGS		
Function	Jumper	Position
í Monitor type select color	J1	Open
Monitor type select monochrome	J1	Closed
í CMOS memory normal operation	J4	Open
CMOS memory clear	J4	Closed
í PCI CLK SYSCLK select 1/4 PCI CLCK	JP13	pins 2 & 3 closed
PCI CLK SYSCLK select 1/3 PCI CLCK	JP13	pins 1 & 2 closed
í BIOS type select EPROM/5v flash	JP14	Open
BIOS type select 12v flash	JP14	Closed

DRAM CONFIGURATION		
Size	Bank 0	Bank 1
8MB	(2) 1M x 36	NONE
16MB	(2) 2M x 36	NONE
16MB	(2) 1M x 36	(2) 1M x 36
24MB	(2) 1M x 36	(2) 2M x 36
24MB	(2) 2M x 36	(2) 1M x 36
32MB	(2) 4M x 36	NONE
32MB	(2) 2M x 36	(2) 2M x 36
40MB	(2) 1M x 36	(2) 4M x 36
40MB	(2) 4M x 36	(2) 1M x 36
48MB	(2) 2M x 36	(2) 4M x 36
48MB	(2) 4M x 36	(2) 2M x 36
64MB	(2) 8M x 36	NONE
64MB	(2) 4M x 36	(2) 4M x 36
72MB	(2) 1M x 36	(2) 8M x 36
72MB	(2) 8M x 36	(2) 1M x 36
80MB	(2) 2M x 36	(2) 8M x 36
80MB	(2) 8M x 36	(2) 2M x 36
96MB	(2) 4M x 36	(2) 8M x 36
96MB	(2) 8M x 36	(2) 4M x 36
128MB	(2) 8M x 36	(2) 8M x 36

CACHE CONFIGURATION			
Size	Bank 0	TAG	SL1
256KB async	(8) 32K x 8	(1) 32K x 8	Not installed
256KB burst	NONE	NONE	Installed
256KB pipeline burst	NONE	NONE	Installed
512KB async	(8) 64K x 8	(1) 32K x 8	Not installed
512KB burst	NONE	NONE	Installed
512KB pipeline burst	NONE	NONE	Installed

Note: If SL1 is filled, Bank 0 must remain empty. If SL1 is used, only one of the four types of cache can be installed.

Continued on next page...

UNIDENTIFIED

SQ-595

... continued from previous page

CACHE JUMPER CONFIGURATION					
Size	JP7	JP8	JP9	JP10	JP11
256KB async	1 & 2	Open	Closed	Closed	Open
256KB burst	2 & 3	Open	Closed	Open	Closed
256KB pipeline burst	1 & 2	Closed	Open	Closed	Open
512KB async	1 & 2	Open	Open	Closed	Open
512KB burst	1 & 2	Closed	Open	Open	Closed
512KB pipeline burst	1 & 2	Open	Open	Open	Closed

Note: Pins designated should be in the closed position.

CPU SPEED CONFIGURATION					
Speed	JP1	JP2	JP4	JP5	JP6
75MHz	Open	Open	Closed	Open	Open
100MHz	Open	Open	Open	Open	Closed
100MHz	Open	Open	Open	Closed	Open
120MHz	Closed	Open	Open	Open	Closed
133MHz	Closed	Open	Open	Closed	Open
150MHz	Closed	Closed	Open	Open	Closed

CPU VOLTAGE CONFIGURATION	
Voltage	JP3
3.52v	pins 1 & 2 closed
3.385v	pins 2 & 3 closed