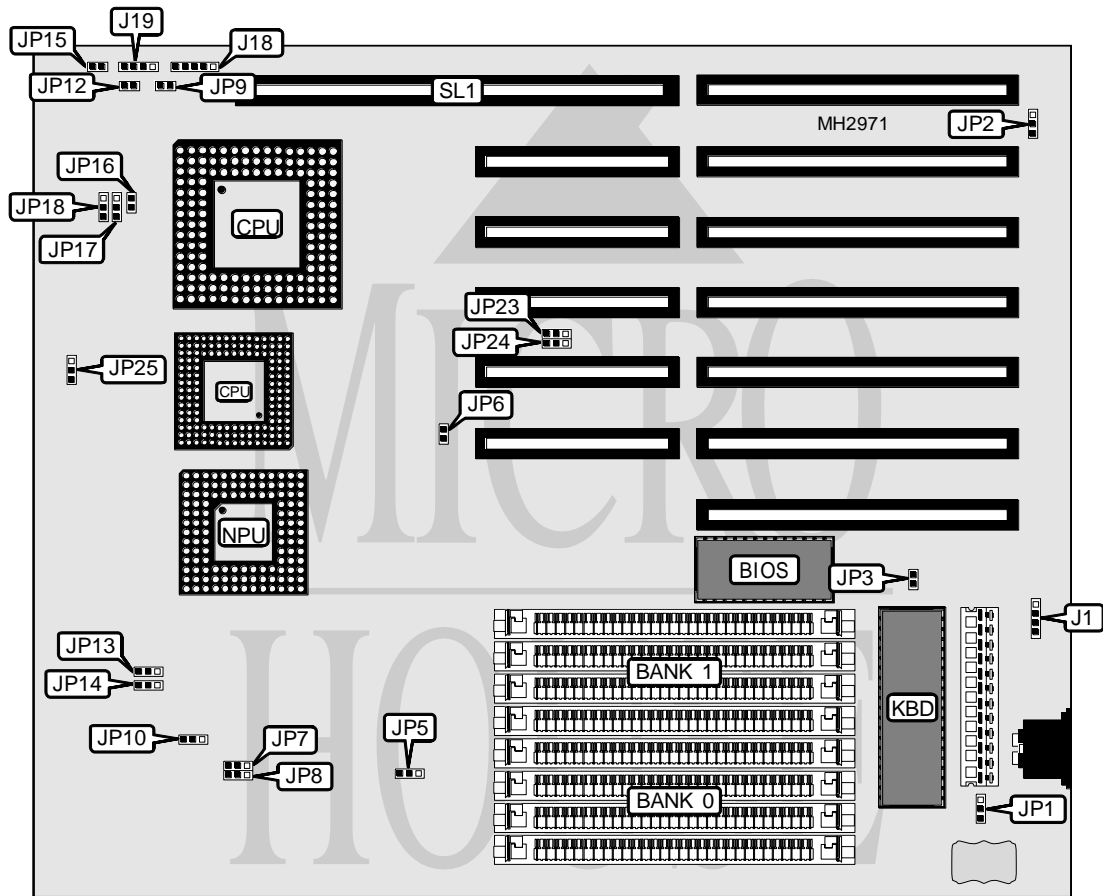


UNIDENTIFIED 4033XTM

Processor	80386DX/80486SX/80487SX/80486DX
Processor Speed	16/20/25/33MHz
Chip Set	OPTI
Max. Onboard DRAM	32MB
Cache	None
BIOS	AMI
Dimensions	330mm x 218mm
I/O Options	32-bit VESA local bus slot
NPU Options	80387DX/3167



CONNECTIONS			
Purpose	Location	Purpose	Location
External battery	J1	Turbo switch	JP12
Power LED & keylock	J18	Reset switch	JP15
Speaker	J19	32-bit VESA local bus slots	SL1
Turbo LED	JP9		

Continued on next page. . .

UNIDENTIFIED 4033XTM

... continued from previous page

USER CONFIGURABLE SETTINGS		
Function	Jumper	Position
í CMOS memory normal operation	JP1	pins 1 & 2 closed
CMOS memory clear	JP1	pins 2 & 3 closed
í Monitor type select color	JP3	Closed
Monitor type select monochrome	JP3	Open
í CPU/cache card not installed	JP6	Closed
CPU/cache card installed	JP6	Open
í Factory configured - do not alter	JP23	pins 2 & 3 closed
í Factory configured - do not alter	JP24	pins 2 & 3 closed

DRAM CONFIGURATION		
Size	Bank 0	Bank 1
1MB	(4) 256K x 9	NONE
2MB	(4) 256K x 9	(4) 256K x 9
4MB	(4) 1M x 9	NONE
5MB	(4) 256K x 9	(4) 1M x 9
8MB	(4) 1M x 9	(4) 1M x 9
16MB	(4) 4M x 9	NONE
32MB	(4) 4M x 9	(4) 4M x 9

CPU TYPE CONFIGURATION					
Type	JP2	JP5	JP13	JP14	JP25
80386	1 & 2	1 & 2	1 & 2	1 & 2	1 & 2
80486	2 & 3	2 & 3	2 & 3	2 & 3	2 & 3

Note: Pins designated should be in the closed position.

CPU TYPE CONFIGURATION (80486 ONLY)			
Type	JP16	JP17	JP18
80486SX	Open	pins 2 & 3 closed	Open
80487SX	Closed	pins 1 & 2 closed	pins 2 & 3 closed
80486DX	Closed	pins 1 & 2 closed	pins 1 & 2 closed

CPU SPEED CONFIGURATION			
Speed	JP7	JP8	JP10
16MHz	pins 2 & 3 closed	pins 2 & 3 closed	pins 2 & 3 closed
20MHz	pins 2 & 3 closed	pins 2 & 3 closed	pins 1 & 2 closed
25MHz	pins 1 & 2 closed	pins 2 & 3 closed	pins 1 & 2 closed
33MHz	pins 2 & 3 closed	pins 1 & 2 closed	pins 1 & 2 closed