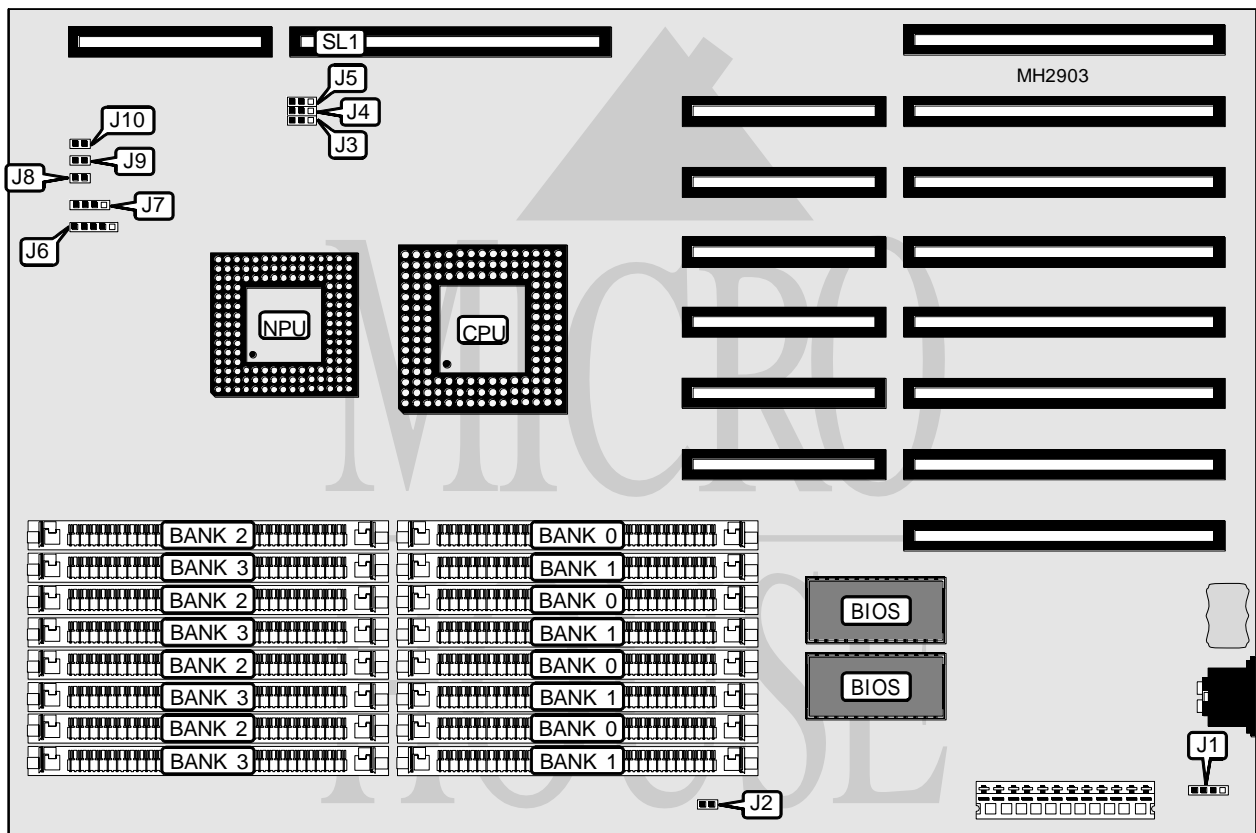


PC BRAND 486/25C CACHE MAINBOARD (MYSTERY MACHINE)

Processor	80486SX
Processor Speed	25MHz
Chip Set	OPTI
Max. Onboard DRAM	16MB
Cache	128KB (on external cache card)
BIOS	AMI
Dimensions	330mm x 218mm
I/O Options	External cache card
NPU Options	4167



CONNECTIONS			
Purpose	Location	Purpose	Location
External battery	J1	Turbo switch	J9
Power LED & keylock	J6	Turbo LED	J10
Speaker	J7	External cache slot	SL1
Reset switch	J8		

Continued on next page...

PC BRAND 486/25C CACHE MAINBOARD (MYSTERY MACHINE)

... continued from previous page

USER CONFIGURABLE SETTINGS		
Function	Jumper	Position
í Battery type select internal	J1	pins 2 & 3 closed
Battery type select external	J1	Closed
í Monitor type select monochrome	J2	Open
Monitor type select color	J2	Closed
í Factory configured - do not alter	J3	N/A

DRAM CONFIGURATION				
Size	Bank 0	Bank 1	Bank 2	Bank 3
1MB	(4) 256K x 9	NONE	NONE	NONE
2MB	(4) 256K x 9	(4) 256K x 9	NONE	NONE
3MB	(4) 256K x 9	(4) 256K x 9	(4) 256K x 9	NONE
4MB	(4) 256K x 9	(4) 256K x 9	(4) 256K x 9	(4) 256K x 9
4MB	(4) 1M x 9	NONE	NONE	NONE
5MB	(4) 256K x 9	(4) 1M x 9	NONE	NONE
5MB	(4) 1M x 9	(4) 256K x 9	NONE	NONE
6MB	(4) 256K x 9	(4) 256K x 9	(4) 1M x 9	NONE
6MB	(4) 256K x 9	(4) 1M x 9	(4) 256K x 9	NONE
6MB	(4) 1M x 9	(4) 256K x 9	(4) 256K x 9	NONE
7MB	(4) 256K x 9	(4) 256K x 9	(4) 1M x 9	(4) 256K x 9
7MB	(4) 256K x 9	(4) 1M x 9	(4) 256K x 9	(4) 256K x 9
7MB	(4) 1M x 9	(4) 256K x 9	(4) 256K x 9	(4) 256K x 9
8MB	(4) 1M x 9	(4) 1M x 9	NONE	NONE
9MB	(4) 256K x 9	(4) 1M x 9	(4) 1M x 9	NONE
9MB	(4) 1M x 9	(4) 1M x 9	(4) 256K x 9	NONE
9MB	(4) 1M x 9	(4) 256K x 9	(4) 1M x 9	NONE
10MB	(4) 256K x 9	(4) 256K x 9	(4) 1M x 9	(4) 1M x 9
10MB	(4) 256K x 9	(4) 1M x 9	(4) 1M x 9	(4) 256K x 9
10MB	(4) 1M x 9	(4) 1M x 9	(4) 256K x 9	(4) 256K x 9
10MB	(4) 1M x 9	(4) 256K x 9	(4) 1M x 9	(4) 256K x 9
12MB	(4) 1M x 9	(4) 1M x 9	(4) 1M x 9	NONE
13MB	(4) 256K x 9	(4) 1M x 9	(4) 1M x 9	(4) 1M x 9
13MB	(4) 1M x 9	(4) 1M x 9	(4) 1M x 9	(4) 256K x 9
13MB	(4) 1M x 9	(4) 256K x 9	(4) 1M x 9	(4) 1M x 9
16MB	(4) 1M x 9	(4) 1M x 9	(4) 1M x 9	(4) 1M x 9

CACHE CONFIGURATION	
Size	SL1
128KB	Card installed

CACHE JUMPER CONFIGURATION		
Setting	J4	J5
Cache mode	pins 1 & 2 closed	pins 1 & 2 closed
Burst mode	pins 2 & 3 closed	pins 2 & 3 closed

