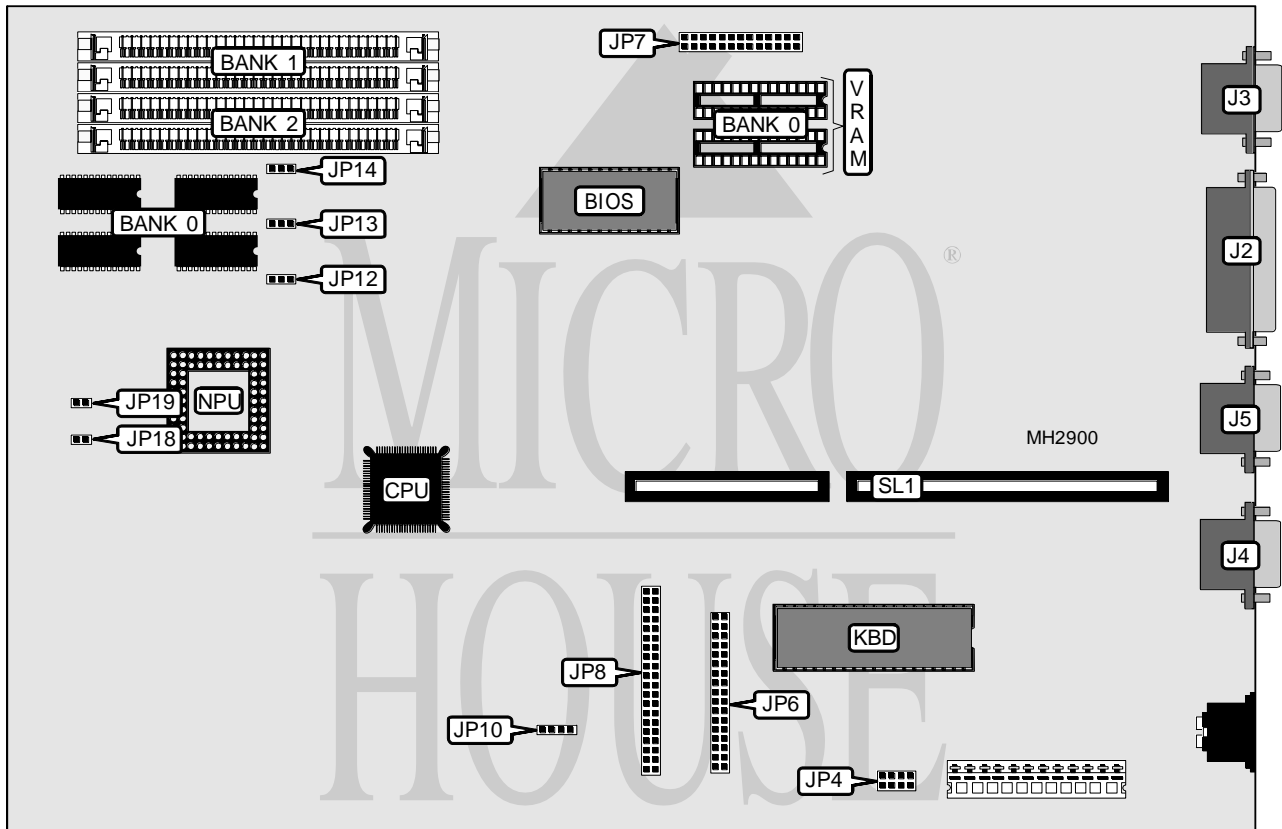


PC BRAND VALUE SERIES 386

Processor	80386SX
Processor Speed	25MHz
Chip Set	Unidentified
Max. Onboard DRAM	16MB
Cache	None
BIOS	Unidentified
Dimensions	330mm x 218mm
I/O Options	Parallel port, serial ports (2), VGA port, VGA feature connector, floppy drive interface, IDE interface, riser slot
NPU Options	80387SX



CONNECTIONS			
Purpose	Location	Purpose	Location
Parallel port	J2	IDE interface	JP8
VGA port	J3	External battery	JP10
Serial port 1	J4	IDE interface LED	JP18
Serial port 2	J5	Power LED & keylock	JP19
Floppy drive interface	JP6	Riser Card	SL1
VGA feature connector	JP7		

Note: The location of pin 1 is unidentified.

Continued on next page. . .

PC BRAND

VALUE SERIES 386

... continued from previous page

USER CONFIGURABLE SETTINGS		
Function	Jumper	Position
í 256KB to 640KB disabled	JP4	pins 1 & 2 closed
Security disabled	JP4	pins 3 & 4 closed
Note: The location of pin 1 is unidentified.		

DRAM CONFIGURATION			
Size	Bank 0	Bank 1	Bank 2
2MB	2MB	NONE	NONE
3MB	2MB	(2) 256K x 9	(2) 256K x 9
4MB	2MB	NONE	(2) 1M x 9
6MB	2MB	(2) 1M x 9	(2) 1M x 9
10MB	2MB	NONE	(2) 4M x 9
10MB	2MB	(2) 1M x 9	(2) 4M x 9
16MB	2MB	(2) 4M x 9	(2) 4M x 9
Note: Bank 0 is factory installed and is not configurable. If 10MB or 16MB is installed, Bank 0 is disabled.			

DRAM JUMPER CONFIGURATION			
Size	JP12	JP13	JP14
2MB	pins 1 & 2 closed	pins 1 & 2 closed	pins 1 & 2 closed
3MB	pins 2 & 3 closed	pins 2 & 3 closed	pins 2 & 3 closed
4MB	pins 1 & 2 closed	pins 1 & 2 closed	pins 1 & 2 closed
6MB	pins 2 & 3 closed	pins 2 & 3 closed	pins 2 & 3 closed
10MB	pins 1 & 2 closed	pins 1 & 2 closed	pins 1 & 2 closed
10MB	pins 2 & 3 closed	pins 2 & 3 closed	pins 2 & 3 closed
16MB	pins 2 & 3 closed	pins 2 & 3 closed	pins 2 & 3 closed
Note: The location of pin 1 is unidentified.			

VRAM CONFIGURATION	
Size	Bank 0
512KB	(2) 256K x 8