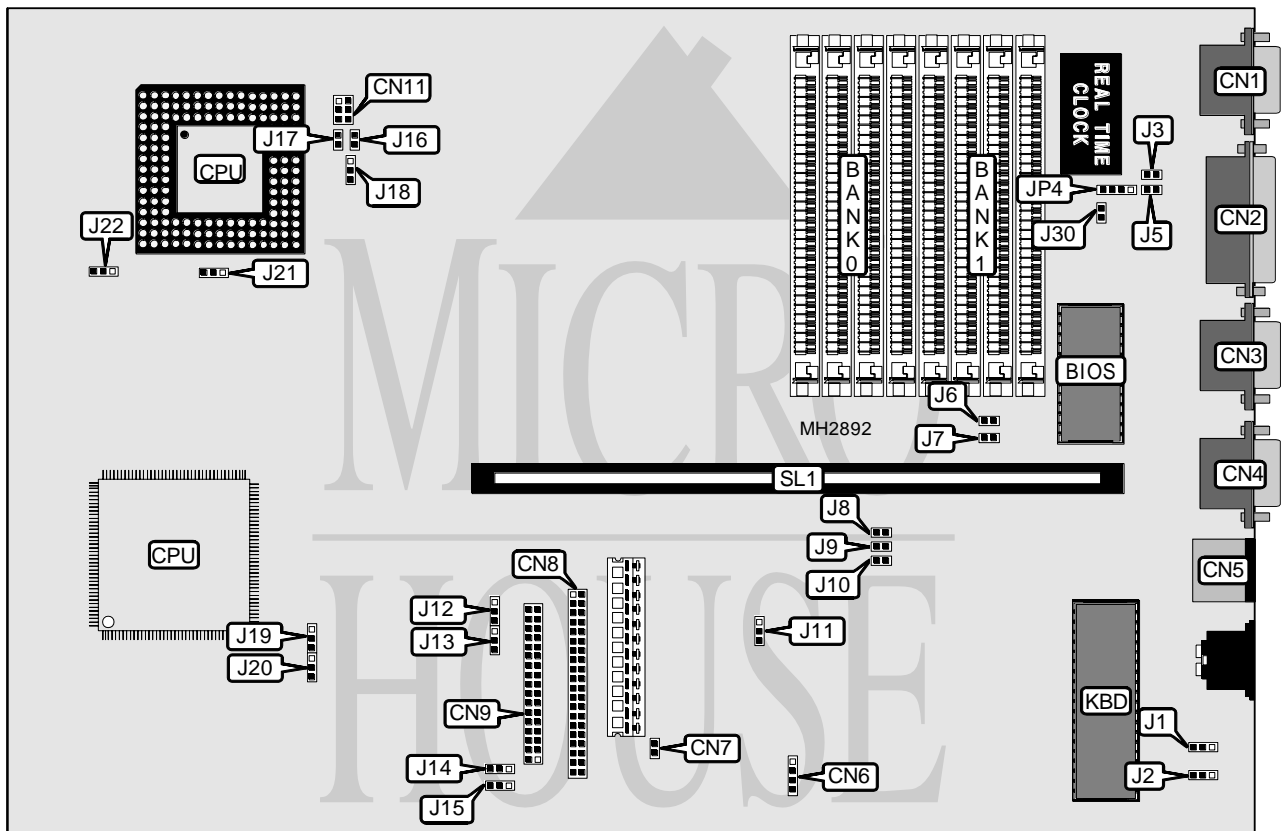


# ICL ERGOLITE SL486

<b>Processor</b>	80486SX/80486DX/80486DX2
<b>Processor Speed</b>	25/33/66(internal)MHz
<b>Chip Set</b>	Acer
<b>Max. Onboard DRAM</b>	32MB
<b>Cache</b>	None
<b>BIOS</b>	Acer
<b>Dimensions</b>	430mm x 352mm
<b>I/O Options</b>	PS/2 mouse port, parallel port, serial ports (2), VGA port, floppy drive interface, IDE interface, riser slot
<b>NPU Options</b>	None



CONNECTIONS			
Purpose	Location	Purpose	Location
VGA port	CN1	Chassis fan power	CN7
Parallel port	CN2	IDE interface	CN8
Serial port 1	CN3	Floppy drive interface	CN9
Serial port 2	CN4	External battery	JP4
PS/2 mouse port	CN5	Riser Card	SL1
IDE interface LED	CN6		

Continued on next page. . .

# ICL ERGOLITE SL486

... continued from previous page

USER CONFIGURABLE SETTINGS		
Function	Jumper	Position
í Factory configured - do not alter	J1	pins 2 & 3 closed
í Password disabled	J2	pins 2 & 3 closed
Password enabled	J2	pins 1 & 2 closed
í Factory configured - do not alter	J3	Open
í Battery type select internal	J5	Closed
Battery type select external	J5	Open
í IRQ 14 enabled	J6	Closed
IRQ 14 disabled	J6	Open
í IRQ12 used for mouse	J7	Closed
IRQ12 disabled	J7	Open
í Factory configured - do not alter	J8	Closed
í Factory configured - do not alter	J9	Closed
í Factory configured - do not alter	J10	Closed
í On board VGA enabled	J11	pins 1 & 2 closed
On board VGA disabled	J11	pins 2 & 3 closed
í Factory configured - do not alter	J12	pins 1 & 2 closed
í Factory configured - do not alter	J13	pins 1 & 2 closed
í Factory configured - do not alter	J14	pins 2 & 3 closed
í Factory configured - do not alter	J15	pins 1 & 2 closed
í 80487SX not installed	J16	Open
80487SX installed	J16	Closed
í Factory configured - do not alter	J18	pins 1 & 2 closed
í Factory configured - do not alter	J19	pins 2 & 3 closed
í Factory configured - do not alter	J20	pins 1 & 2 closed
í Factory configured - do not alter	J21	pins 1 & 2 closed
í Factory configured - do not alter	J22	pins 2 & 3 closed
í Factory configured - do not alter	J30	N/A

DRAM CONFIGURATION		
Size	Bank 0	Bank 1
4MB	(4) 1M x 9	NONE
8MB	(4) 1M x 9	(4) 1M x 9
16MB	(4) 4M x 9	NONE
32MB	(4) 4M x 9	(4) 4M x 9

CPU TYPE CONFIGURATION	
Type	JP17
80486SX	Open
ODP486SX	Closed
80487SX	Open
80486DX	Closed
80486DX2	Closed

Continued on next page. . .

---

**ICL**  
**ERGOLITE SL486***... continued from previous page*

CPU SPEED CONFIGURATION	
Speed	CN11
25MHz	Open
33MHz	pins 5 & 6 closed
66MHz	pins 5 & 6 closed