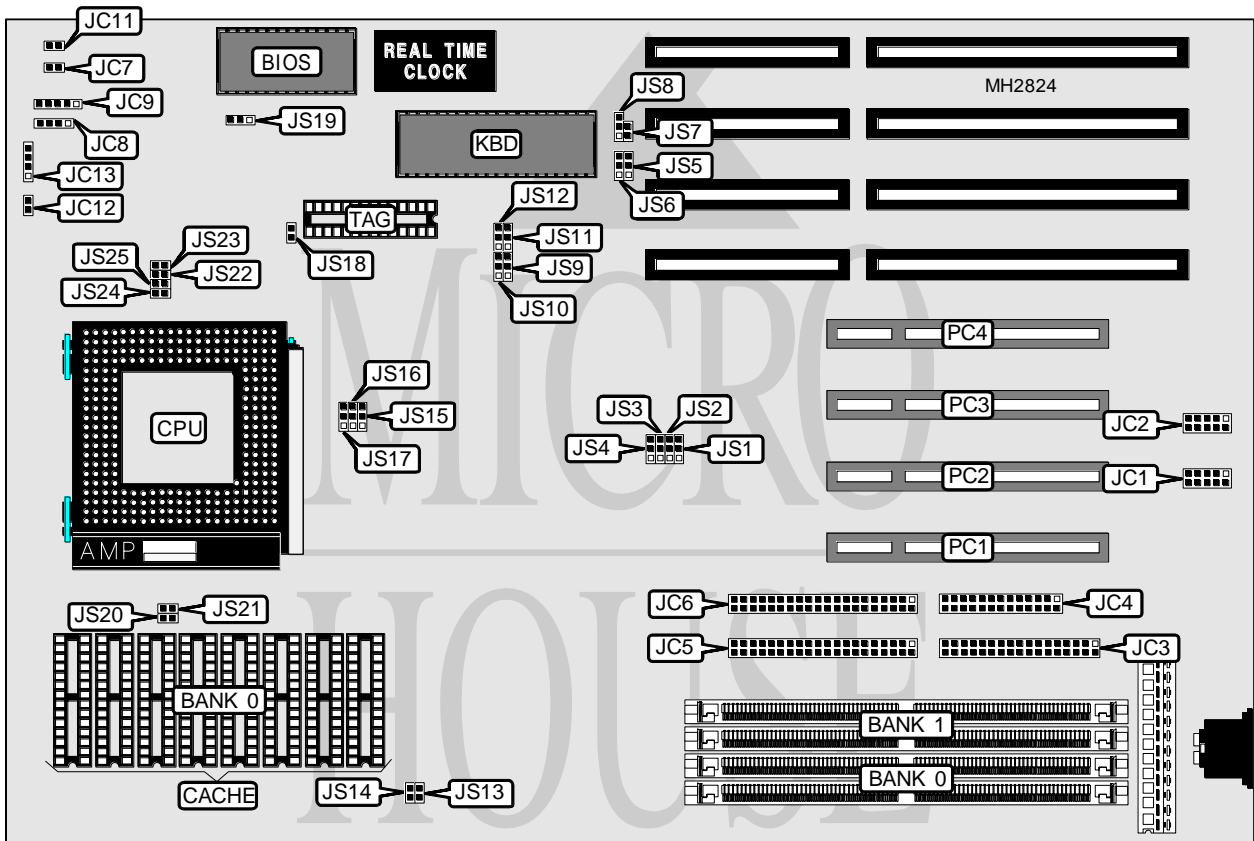


ADVANCED INTEGRATION RESEARCH, INC.

54CPI REV. 1.0

Processor	Pentium
Processor Speed	75/90/100/120MHz
Chip Set	Intel
Max. Onboard DRAM	128MB
Cache	256/512KB
BIOS	AMI
Dimensions	330mm x 218mm
I/O Options	32-bit PCI slots (4), floppy drive interface, IDE interfaces (2), parallel port, serial ports (2)
NPU Options	None



CONNECTIONS			
Purpose	Location	Purpose	Location
Serial port 1	JC1	IDE interface LED	JC8
Serial port 2	JC2	Power LED & keylock	JC9
Floppy drive interface	JC3	Turbo LED	JC11
Parallel port	JC4	Reset switch	JC12
IDE interface (primary)	JC5	Speaker	JC13
IDE interface (secondary)	JC6	32-bit PCI slots	PC1 - PC4
Turbo switch	JC7		

Continued on next page. . .

ADVANCED INTEGRATION RESEARCH, INC.
54CPI REV. 1.0

... continued from previous page

USER CONFIGURABLE SETTINGS		
Function	Jumper	Position
í Parallel port IRQ select IRQ7	JS1	pins 1 & 2 closed
Parallel port IRQ select IRQ5	JS1	pins 2 & 3 closed
í Factory configured - do not alter	JS4	Open
í Factory configured - do not alter	JS5	pins 1 & 2 closed
í Factory configured - do not alter	JS6	pins 1 & 2 closed
í Monitor type select monochrome/EGA/VGA	JS7	Open
Monitor type select CGA	JS7	Closed
í CMOS memory normal operation	JS8	pins 1 & 2 closed
CMOS memory clear	JS8	pins 2 & 3 closed
í Factory configured - do not alter	JS13	Closed
í Factory configured - do not alter	JS14	Closed
í Factory configured - do not alter	JS18	Open
í Factory configured - do not alter	JS19	pins 1 & 2 closed
í Factory configured - do not alter	JS20	Open
í Factory configured - do not alter	JS21	Open
í Factory configured - do not alter	JS22	Closed
í Factory configured - do not alter	JS23	Closed
í Factory configured - do not alter	JS24	Closed
í Factory configured - do not alter	JS25	Closed

DRAM CONFIGURATION		
Size	Bank 0	Bank 1
8MB	(2) 1M x 36	NONE
16MB	(2) 1M x 36	(2) 1M x 36
16MB	(2) 2M x 36	NONE
32MB	(2) 2M x 36	(2) 2M x 36
32MB	(2) 4M x 36	NONE
40MB	(2) 1M x 36	(2) 4M x 36
48MB	(2) 2M x 36	(2) 4M x 36
64MB	(2) 4M x 36	(2) 4M x 36
64MB	(2) 8M x 36	NONE
80MB	(2) 2M x 36	(2) 8M x 36
128MB	(2) 8M x 36	(2) 8M x 36

CACHE CONFIGURATION		
Size	Bank 0	TAG
256KB	(8) 32K x 8	(1) 32K x 8
512KB	(8) 64K x 8	(1) 32K x 8

CACHE JUMPER CONFIGURATION			
Size	JS15	JS16	JS17
256KB	pins 1 & 2 closed	pins 1 & 2 closed	pins 1 & 2 closed
512KB	pins 2 & 3 closed	pins 2 & 3 closed	pins 2 & 3 closed

Continued on next page. ...

ADVANCED INTEGRATION RESEARCH, INC.
54CPI REV. 1.0

... continued from previous page

CPU SPEED CONFIGURATION				
Speed	JS9	JS10	JS11	JS12
75MHz	pins 2 & 3 closed	pins 1 & 2 closed	pins 1 & 2 closed	pins 1 & 2 closed
90MHz	pins 1 & 2 closed	pins 2 & 3 closed	pins 1 & 2 closed	pins 1 & 2 closed
100MHz	pins 2 & 3 closed	pins 2 & 3 closed	pins 1 & 2 closed	pins 2 & 3 closed
120MHz	pins 1 & 2 closed	pins 2 & 3 closed	pins 2 & 3 closed	pins 1 & 2 closed

DMA CONFIGURATION		
DMA	JS2	JS3
Disabled	Open	Open
DMA1	pins 2 & 3 closed	pins 2 & 3 closed
DMA3	pins 1 & 2 closed	pins 1 & 2 closed