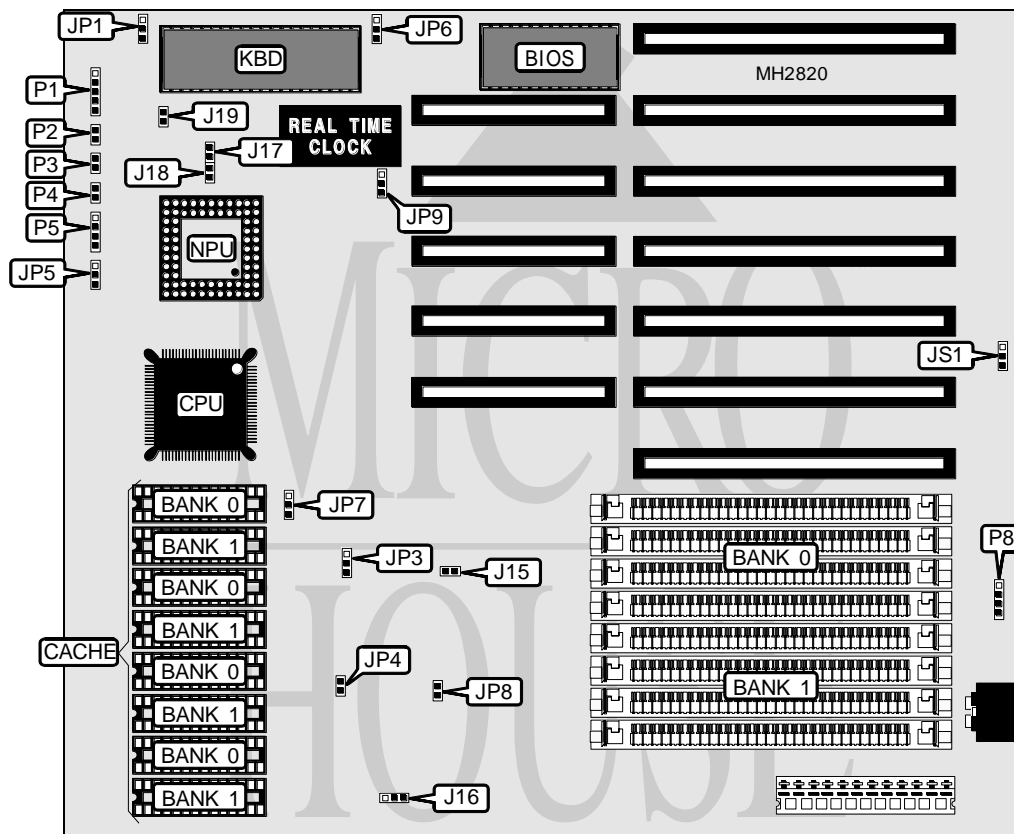


OCEAN INFORMATION SYSTEMS, INC.

JAGUAR IV 486DLC

Processor	CX486DLC
Processor Speed	33/40MHz
Chip Set	Unidentified
Max. Onboard DRAM	32MB
Cache	32/64/128KB
BIOS	Unidentified
Dimensions	330mm x 218mm
I/O Options	None
NPU Options	80387DX



CONNECTIONS			
Purpose	Location	Purpose	Location
Reset switch	P1	Turbo LED	P4
Speaker	P2	Power LED & keylock	P5
Turbo switch	P3	External battery	P8

Continued on next page. . .

OCEAN INFORMATION SYSTEMS, INC.

JAGUAR IV 486DLC

... continued from previous page

USER CONFIGURABLE SETTINGS		
Function	Jumper	Position
í Factory configured - do not alter	J15	N/A
í Factory configured - do not alter	J16	N/A
í Factory configured - do not alter	J17	N/A
í Factory configured - do not alter	J18	N/A
í Factory configured - do not alter	J19	N/A
í Password disabled	JP1	pins 2 & 3 closed
Password enabled	JP1	pins 1 & 2 closed
í CMOS memory normal operation	JP4	pins 2 & 3 closed
CMOS memory clear	JP4	pins 1 & 2 closed
í IDE interface speed select fast speed	JP5	pins 2 & 3 closed
IDE interface speed select normal speed	JP5	pins 1 & 2 closed
í Factory configured - do not alter	JP6	N/A
í Factory configured - do not alter	JP7	N/A
í Factory configured - do not alter	JP8	N/A
í Factory configured - do not alter	JP9	N/A
í Factory configured - do not alter	JS1	N/A

DRAM CONFIGURATION		
Size	Bank 0	Bank 1
1MB	(4) 256K x 9	NONE
2MB	(4) 256K x 9	(4) 256K x 9
4MB	(4) 1M x 9	NONE
5MB	(4) 256K x 9	(4) 1M x 9
8MB	(4) 1M x 9	(4) 1M x 9
16MB	(4) 4M x 9	NONE
20MB	(4) 1M x 9	(4) 4M x 9
32MB	(4) 4M x 9	(4) 4M x 9

CACHE CONFIGURATION		
Size	Bank 0	Bank 1
32KB	(4) 8K x 8	NONE
64KB	(4) 8K x 8	(4) 8K x 8
128KB	(4) 32K x 8	NONE

CACHE JUMPER CONFIGURATION	
Size	JP3
32KB	pins 2 & 3 closed
64KB	pins 2 & 3 closed
128KB	pins 1 & 2 closed