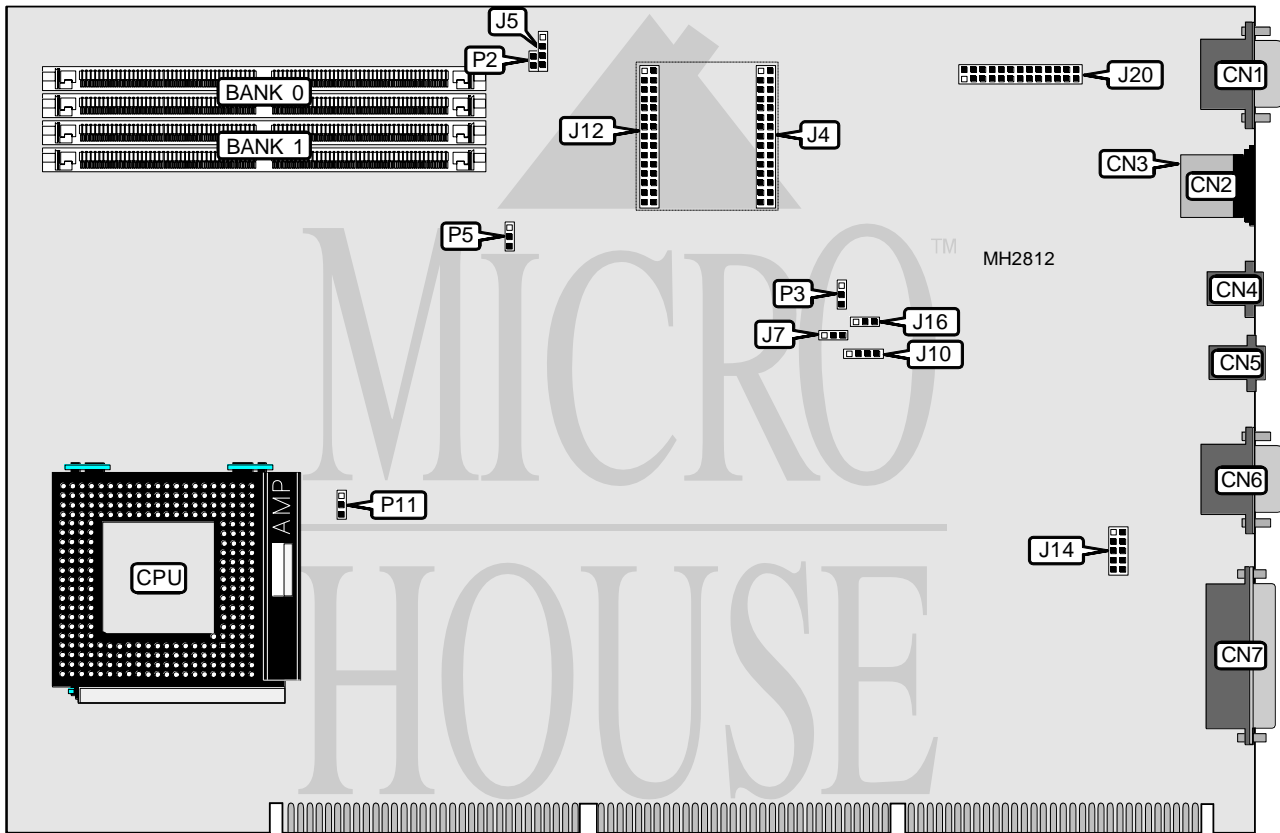


COMPAQ COMPUTER CORPORATION
 PRESARIO CDS 774/972/974/982/992
 PRESARIO CDTV 978

Processor	Pentium
Processor Speed	75/90/100MHz
Chip Set	Unidentified
Max. Onboard DRAM	136MB
Cache	256KB
BIOS	Unidentified
Dimensions	330mm x 218mm
I/O Options	Parallel port, PS/2 mouse port, serial ports (2), VGA feature connector, VGA port, modem port, CD-ROM audio connector, modem audio connector, video memory interface
NPU Options	None



CONNECTIONS			
Purpose	Location	Purpose	Location
VGA port	CN1	Video memory connector	J4, J12
PS/2 mouse port	CN2	External battery	J5
Keyboard port	CN3	Modem audio connector	J7
Modem port	CN4	CD-ROM audio connector	J10
Modem port	CN5	Serial port 2	J14
Serial port 1	CN6	VGA feature connector	J20
Parallel port	CN7		

Continued on next page. . .

COMPAQ COMPUTER CORPORATION
PRESARIO CDS 774/972/974/982/992
PRESARIO CDTV 978

... continued from previous page

USER CONFIGURABLE SETTINGS		
Function	Jumper	Position
í Factory configured - do not alter	J16	N/A
í CMOS memory normal operation	P2	Closed
CMOS memory clear	P2	Open
í Password enabled	P3	pins 1 & 2 closed
Password disabled	P3	pins 2 & 3 closed
í CPU core to bus ratio speed select 1.5x	P11	pins 1 & 2 closed
CPU core to bus ratio speed select 2x	P11	pins 2 & 3 closed

DRAM CONFIGURATION (75MHZ CPU ONLY)			
Size	Bank 0A	Bank 0	Bank 1
20MB	12MB	(2) 1M x 36	NONE
28MB	12MB	(2) 1M x 36	(2) 1M x 36
28MB	12MB	(2) 2M x 36	NONE
36MB	12MB	(2) 1M x 36	(2) 2M x 36
36MB	12MB	(2) 2M x 36	(2) 1M x 36
44MB	12MB	(2) 2M x 36	(2) 2M x 36
44MB	12MB	(2) 4M x 36	NONE
52MB	12MB	(2) 1M x 36	(2) 4M x 36
52MB	12MB	(2) 4M x 36	(2) 1M x 36
60MB	12MB	(2) 2M x 36	(2) 4M x 36
60MB	12MB	(2) 4M x 36	(2) 2M x 36
76MB	12MB	(2) 4M x 36	(2) 4M x 36
76MB	12MB	(2) 8M x 36	NONE
84MB	12MB	(2) 1M x 36	(2) 8M x 36
84MB	12MB	(2) 8M x 36	(2) 1M x 36
92MB	12MB	(2) 2M x 36	(2) 8M x 36
92MB	12MB	(2) 8M x 36	(2) 2M x 36
108MB	12MB	(2) 4M x 36	(2) 8M x 36
108MB	12MB	(2) 8M x 36	(2) 4M x 36
136MB	12MB	(2) 8M x 36	(2) 8M x 36

Note: Bank 0A is factory installed and is not configurable. Only 8MB of the onboard memory is used when 136MB is installed.

DRAM CONFIGURATION (75MHZ & 90MHZ CPU ONLY)			
Size	Bank 0A	Bank 0	Bank 1
16MB	8MB	(2) 1M x 36	NONE
24MB	8MB	(2) 1M x 36	(2) 1M x 36
24MB	8MB	(2) 2M x 36	NONE
32MB	8MB	(2) 1M x 36	(2) 2M x 36
32MB	8MB	(2) 2M x 36	(2) 1M x 36
40MB	8MB	(2) 2M x 36	(2) 2M x 36
40MB	8MB	(2) 4M x 36	NONE
48MB	8MB	(2) 1M x 36	(2) 4M x 36
48MB	8MB	(2) 4M x 36	(2) 1M x 36

Continued on next page. . .

COMPAQ COMPUTER CORPORATION
PRESARIO CDS 774/972/974/982/992
PRESARIO CDTV 978

... continued from previous page

DRAM CONFIGURATION (75MHZ & 90MHZ CPU ONLY CON'T)			
Size	Bank 0A	Bank 0	Bank 1
56MB	8MB	(2) 2M x 36	(2) 4M x 36
56MB	8MB	(2) 4M x 36	(2) 2M x 36
72MB	8MB	(2) 4M x 36	(2) 4M x 36
72MB	8MB	(2) 8M x 36	NONE
80MB	8MB	(2) 1M x 36	(2) 8M x 36
80MB	8MB	(2) 8M x 36	(2) 1M x 36
88MB	8MB	(2) 2M x 36	(2) 8M x 36
88MB	8MB	(2) 8M x 36	(2) 2M x 36
104MB	8MB	(2) 4M x 36	(2) 8M x 36
104MB	8MB	(2) 8M x 36	(2) 4M x 36
136MB	8MB	(2) 8M x 36	(2) 8M x 36

Note: Bank 0A is factory installed and is not configurable.

DRAM CONFIGURATION (100MHZ CPU ONLY)			
Size	Bank 0A	Bank 0	Bank 1
24MB	16MB	(2) 1M x 36	NONE
32MB	16MB	(2) 1M x 36	(2) 1M x 36
32MB	16MB	(2) 2M x 36	NONE
40MB	16MB	(2) 1M x 36	(2) 2M x 36
40MB	16MB	(2) 2M x 36	(2) 1M x 36
48MB	16MB	(2) 2M x 36	(2) 2M x 36
48MB	16MB	(2) 4M x 36	NONE
56MB	16MB	(2) 1M x 36	(2) 4M x 36
56MB	16MB	(2) 4M x 36	(2) 1M x 36
64MB	16MB	(2) 2M x 36	(2) 4M x 36
64MB	16MB	(2) 4M x 36	(2) 2M x 36
80MB	16MB	(2) 4M x 36	(2) 4M x 36
80MB	16MB	(2) 8M x 36	NONE
88MB	16MB	(2) 1M x 36	(2) 8M x 36
88MB	16MB	(2) 8M x 36	(2) 1M x 36
96MB	16MB	(2) 2M x 36	(2) 8M x 36
96MB	16MB	(2) 8M x 36	(2) 2M x 36
112MB	16MB	(2) 4M x 36	(2) 8M x 36
112MB	16MB	(2) 8M x 36	(2) 4M x 36
136MB	16MB	(2) 8M x 36	(2) 8M x 36

Note: Bank 0A is factory installed and is not configurable. Only 8MB of the onboard memory is used when 136MB is installed.

CACHE CONFIGURATION
Note: This board is factory installed with 256KB. It is not configurable.

Continued on next page...

COMPAQ COMPUTER CORPORATION
PRESARIO CDS 774/972/974/982/992
PRESARIO CDTV 978

... continued from previous page

CPU BUS SPEED CONFIGURATION	
Speed	P5
50MHz	pins 2 & 3 closed
60MHz	pins 1 & 2 closed

VIDEO MEMORY CONFIGURATION
Note: To upgrade video memory, install video module on jumpers J4 & J12.