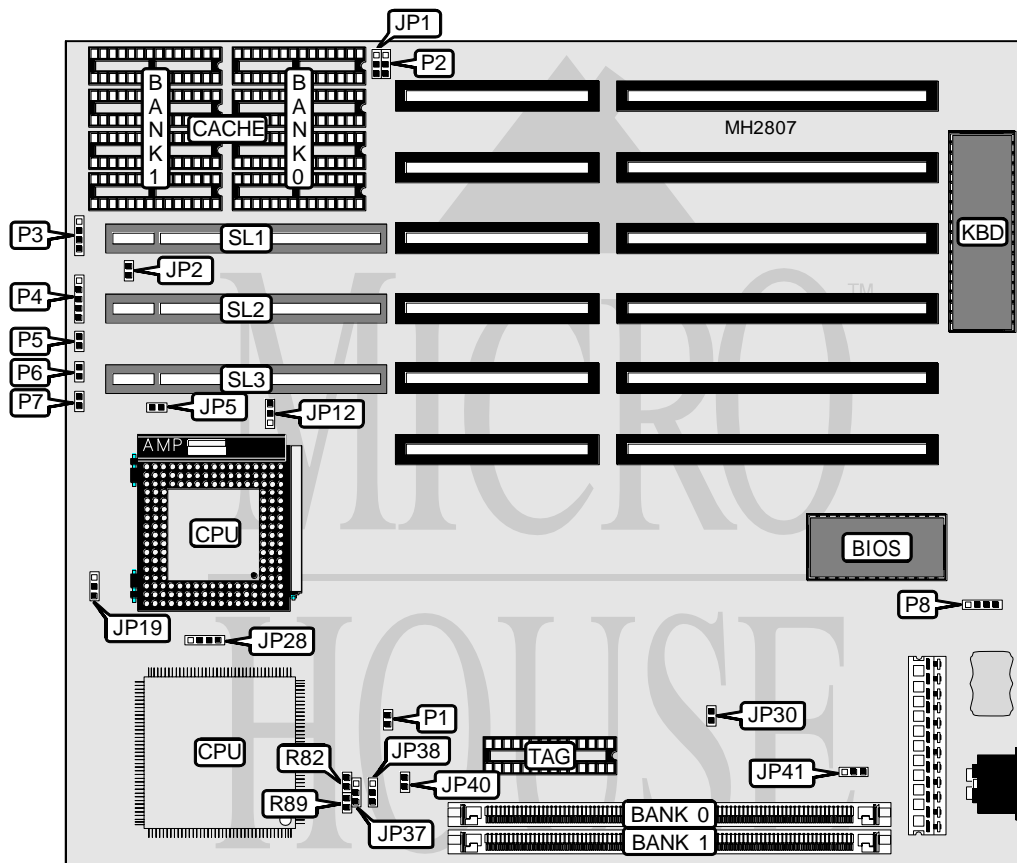


SEANIX TECHNOLOGY, INC.

486VLP3 (VER. 2.0)

Processor	8088/80286/80386SX/CX486SLC/80386DX/CX486DLC 80486SX/80487SX/80486DX/ODP486SX/80486DX2/80486DX4/Pentium Overdrive/Pentium
Processor Speed	8/10/12/16/20/25/33/40/50(internal)/50/60/66(internal)/66MHz
Chip Set	Contaq
Max. Onboard DRAM	64MB
Cache	128/256KB
BIOS	Award
Dimensions	254mm x 218mm
I/O Options	32-bit VESA local bus slots (3)
NPU Options	None



CONNECTIONS			
Purpose	Location	Purpose	Location
Chassis fan power	P2	Turbo LED	P6
Speaker	P3	Reset switch	P7
Power LED & keylock	P4	External battery	P8
Turbo switch	P5	32-bit VESA local bus slots	SL1 - SL3

Continued on next page. . .

SEANIX TECHNOLOGY, INC.
486VLP3 (VER. 2.0)

... continued from previous page

USER CONFIGURABLE SETTINGS		
Function	Jumper	Position
í Factory configured - do not alter	JP5	Open
í Factory configured - do not alter	P1	N/A

DRAM CONFIGURATION		
Size	Bank 0	Bank 1
2MB	(1) 256K x 36	(1) 256K x 36
2MB	(1) 512K x 36	NONE
3MB	(1) 512K x 36	(1) 256K x 36
4MB	(1) 512K x 36	(1) 512K x 36
4MB	(1) 1M x 36	NONE
5MB	(1) 256K x 36	(1) 1M x 36
5MB	(1) 1M x 36	(1) 256K x 36
6MB	(1) 512K x 36	(1) 1M x 36
8MB	(1) 1M x 36	(1) 1M x 36
9MB	(1) 2M x 36	(1) 256K x 36
10MB	(1) 2M x 36	(1) 512K x 36
10MB	(1) 512K x 36	(1) 2M x 36
12MB	(1) 2M x 36	(1) 1M x 36
16MB	(1) 2M x 36	(1) 2M x 36
16MB	(1) 4M x 36	NONE
17MB	(1) 4M x 36	(1) 256K x 36
17MB	(1) 256K x 36	(1) 4M x 36
18MB	(1) 512K x 36	(1) 4M x 36
20MB	(1) 4M x 36	(1) 1M x 36
20MB	(1) 1M x 36	(1) 4M x 36
24MB	(1) 2M x 36	(1) 4M x 36
32MB	(1) 4M x 36	(1) 4M x 36
32MB	(1) 8M x 36	NONE
40MB	(1) 8M x 36	(1) 2M x 36
40MB	(1) 2M x 36	(1) 8M x 36
48MB	(1) 8M x 36	(1) 4M x 36
64MB	(1) 8M x 36	(1) 8M x 36

DRAM JUMPER CONFIGURATION	
Size	JP41
Bank 0 & Bank 1 single side SIMM	pins 1 & 2 closed
Bank 0 double side SIMM & Bank 1 single side SIMM	pins 2 & 3 closed
Bank 0 & Bank 1 double side SIMM	pins 2 & 3 closed

Continued on next page. ...

SEANIX TECHNOLOGY, INC.

486VLP3 (VER. 2.0)

... continued from previous page

CACHE CONFIGURATION			
Size	Bank 0	Bank 1	TAG
128KB	(4) 32K x 8	NONE	(1) 8K x 8
256KB	(4) 32K x 8	(4) 32K x 8	(1) 32K x 8

CACHE JUMPER CONFIGURATION	
Size	JP1
128KB	pins 2 & 3 closed
256KB	pins 1 & 2 closed

CPU TYPE CONFIGURATION				
Type	JP19	JP28	R82	R89
80486SX (PQFP)	pins 1 & 2 closed	pins 1 & 2, 3 & 4 closed	Closed	Closed
80486SX (PGA)	pins 1 & 2 closed	pins 2 & 3 closed	Closed	Closed
80486DX	pins 1 & 2 closed	pins 1 & 2, 3 & 4 closed	Closed	Closed
80486DX2	pins 1 & 2 closed	pins 1 & 2, 3 & 4 closed	Closed	Closed
80486DX4	pins 1 & 2 closed	pins 1 & 2, 3 & 4 closed	Open	Open
Pentium Overdrive	pins 1 & 2 closed	pins 1 & 2, 3 & 4 closed	Closed	Closed

CPU SPEED CONFIGURATION				
Speed	JP30	JP37	JP38	JP40
25MHz	Closed	pins 2 & 3 closed	Open	Closed
33MHz	Open	Open	pins 2 & 3 closed	Closed
40MHz	Open	pins 2 & 3 closed	Open	Open
50iMHz	Closed	pins 2 & 3 closed	Open	Closed
50MHz	Open	Open	pins 2 & 3 closed	Open
66iMHz	Open	Open	pins 2 & 3 closed	Closed
75iMHz	Closed	pins 2 & 3 closed	Open	Closed
100iMHz	Open	Open	pins 2 & 3 closed	Closed

VESA WAIT STATE CONFIGURATION	
Wait states	JP12
0 wait states	pins 2 & 3 closed
1 wait state	pins 1 & 2 closed

BUS SPEED CONFIGURATION	
CPU speed	JP2
<= 33MHz	Open
> 33MHz	Closed