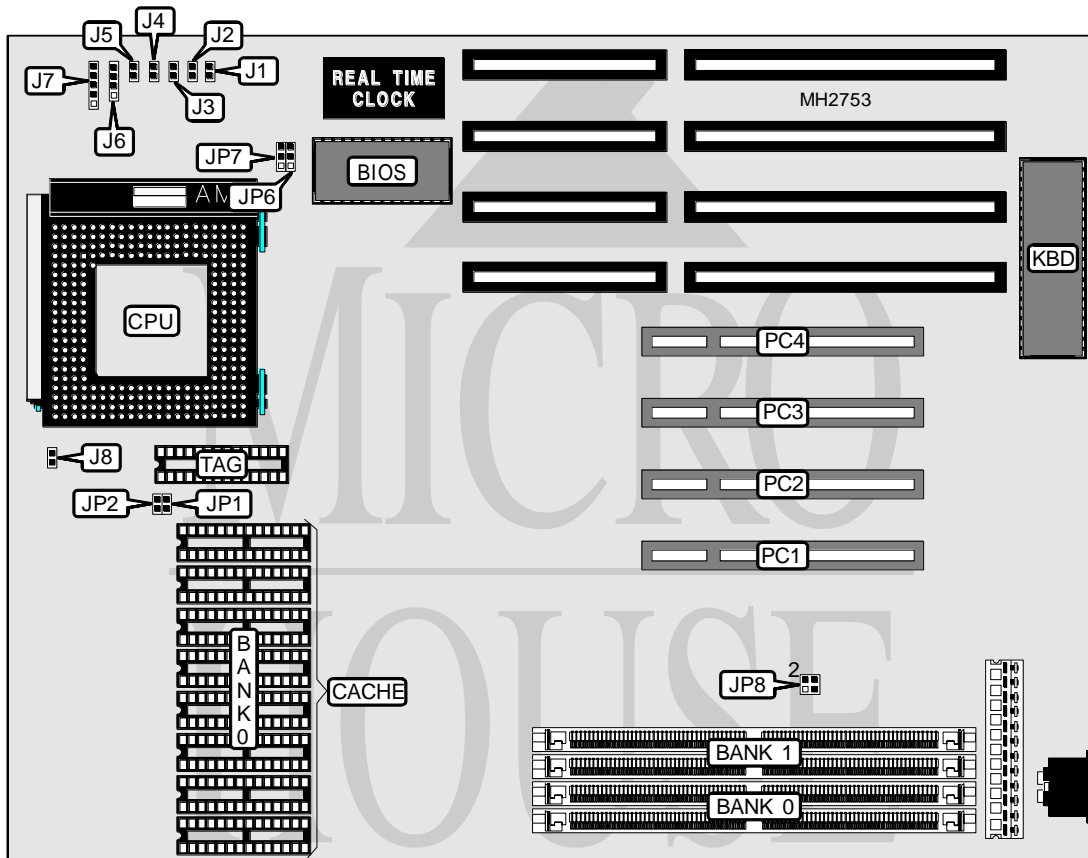


GIGA-BYTE TECHNOLOGY CO., INC.

GA - 586AS

Processor	Pentium
Processor Speed	75/90/100MHz
Chip Set	SIS
Max. Onboard DRAM	128MB
Cache	256/512/1024KB
BIOS	Award
Dimensions	280mm x 220mm
I/O Options	32-bit PCI slots (4), green PC connector
NPU Options	None



CONNECTIONS			
Purpose	Location	Purpose	Location
Green PC connector	J1	Speaker	J6
Green PC LED	J2	Power LED & keylock	J7
Reset switch	J3	Chassis fan power	J8
Turbo switch	J4	32-bit PCI slots	PC1 - PC4
Turbo LED	J5		

Continued on next page. . .

GIGA-BYTE TECHNOLOGY CO., INC.
GA - 586AS

... continued from previous page

DRAM CONFIGURATION		
Size	Bank 0	Bank 1
2MB	(2) 256K x 36	NONE
2MB	(2) 256K x 36	NONE
4MB	(2) 512K x 36	NONE
4MB	(2) 256K x 36	(2) 256K x 36
8MB	(2) 512K x 36	(2) 512K x 36
8MB	(2) 1M x 36	NONE
8MB	(2) 512K x 36	(2) 512K x 36
8MB	(2) 1M x 36	NONE
12MB	(2) 512K x 36	(2) 1M x 36
16MB	(2) 2M x 36	NONE
16MB	(2) 1M x 36	(2) 1M x 36
20MB	(2) 512K x 36	(2) 2M x 36
24MB	(2) 2M x 36	(2) 1M x 36
24MB	(2) 2M x 36	(2) 1M x 36
32MB	(2) 2M x 36	(2) 2M x 36
32MB	(2) 4M x 36	NONE
32MB	(2) 2M x 36	(2) 2M x 36
32MB	(2) 4M x 36	NONE
36MB	(2) 512K x 36	(2) 4M x 36
40MB	(2) 1M x 36	(2) 4M x 36
48MB	(2) 2M x 36	(2) 4M x 36
64MB	(2) 8M x 36	NONE
64MB	(2) 4M x 36	(2) 4M x 36
80MB	(2) 2M x 36	(2) 8M x 36
96MB	(2) 8M x 36	(2) 2M x 36
96MB	(2) 8M x 36	(2) 4M x 36
128MB	(2) 8M x 36	(2) 8M x 36
128MB	(2) 8M x 36	(2) 8M x 36

DRAM JUMPER CONFIGURATION	
Size	JP8
2MB	pins 1 & 2, 3 & 4 closed
2MB	pins 1 & 3, 2 & 4 closed
4MB	pins 1 & 2, 3 & 4 closed
4MB	pins 1 & 3, 2 & 4 closed
8MB	pins 1 & 2, 3 & 4 closed
8MB	pins 1 & 2, 3 & 4 closed
8MB	pins 1 & 3, 2 & 4 closed
8MB	pins 1 & 3, 2 & 4 closed
12MB	pins 1 & 2, 3 & 4 closed
16MB	pins 1 & 2, 3 & 4 closed
16MB	pins 1 & 3, 2 & 4 closed
20MB	pins 1 & 2, 3 & 4 closed

Continued on next page. ...

GIGA-BYTE TECHNOLOGY CO., INC.

GA - 586AS

... continued from previous page

DRAM JUMPER CONFIGURATION (CON'T)	
Size	JP8
24MB	pins 1 & 2, 3 & 4 closed
24MB	pins 1 & 3, 2 & 4 closed
32MB	pins 1 & 2, 3 & 4 closed
32MB	pins 1 & 2, 3 & 4 closed
32MB	pins 1 & 3, 2 & 4 closed
32MB	pins 1 & 3, 2 & 4 closed
36MB	pins 1 & 2, 3 & 4 closed
40MB	pins 1 & 3, 2 & 4 closed
48MB	pins 1 & 2, 3 & 4 closed
64MB	pins 1 & 2, 3 & 4 closed
64MB	pins 1 & 3, 2 & 4 closed
80MB	pins 1 & 2, 3 & 4 closed
96MB	pins 1 & 2, 3 & 4 closed
96MB	pins 1 & 3, 2 & 4 closed
128MB	pins 1 & 2, 3 & 4 closed
128MB	pins 1 & 3, 2 & 4 closed

CACHE CONFIGURATION		
Size	Bank 0	TAG
256KB	(8) 32K x 8	(1) 8K x 8 or (1) 32K x 8
512KB	(8) 64K x 8	(1) 16K x 8 or (1) 32K x 8
1MB	(8) 128K x 8	(1) 32K x 8

CACHE JUMPER CONFIGURATION		
Size	JP1	JP2
256KB	Open	Open
512KB	Closed	Open
1MB	Closed	Closed

CPU SPEED CONFIGURATION		
Speed	JP6	JP7
75MHz	pins 2 & 3 closed	pins 2 & 3 closed
90MHz	pins 1 & 2 closed	pins 1 & 2 closed
100MHz	pins 2 & 3 closed	pins 1 & 2 closed