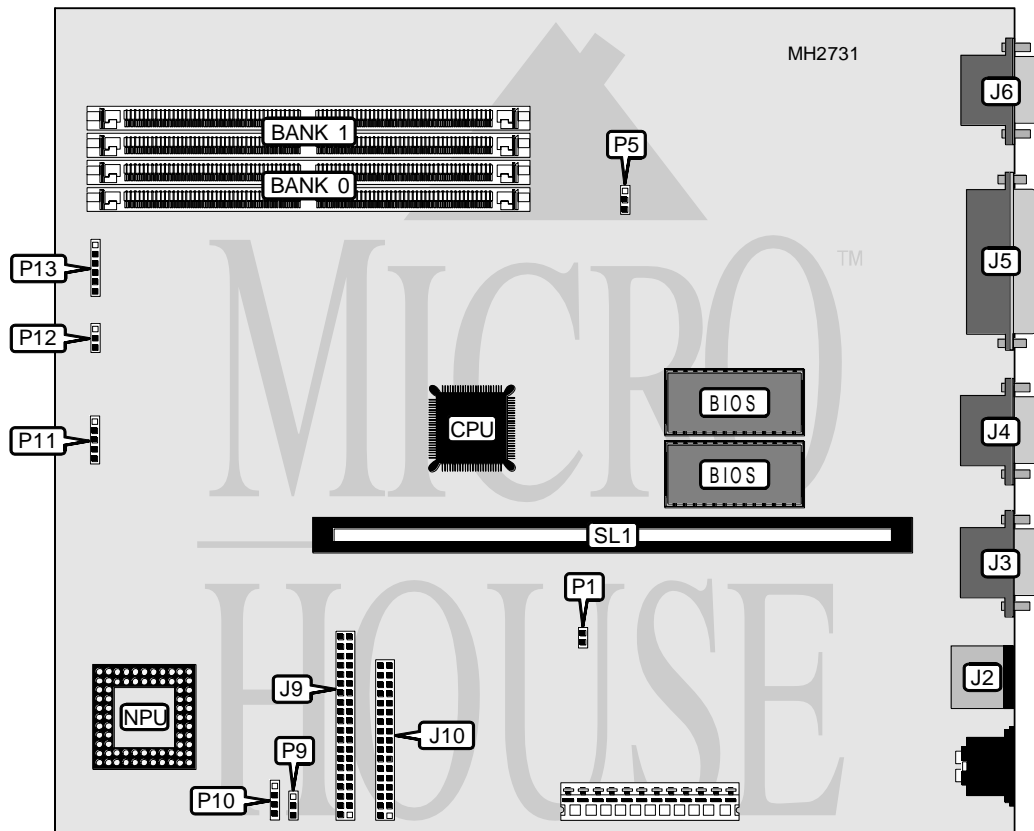


# COMPAQ COMPUTER CORPORATION PROLINEA (386SX-BASED MODELS)

<b>Processor</b>	80386SX
<b>Processor Speed</b>	25MHz
<b>Chip Set</b>	Unidentified
<b>Max. Onboard DRAM</b>	16MB
<b>Cache</b>	None
<b>BIOS</b>	Unidentified
<b>Dimensions</b>	258 x 218mm
<b>I/O Options</b>	Riser card slot, floppy drive interface, IDE interface, parallel port, PS/2 mouse port, serial ports (2), VGA port
<b>NPU Options</b>	80387



CONNECTIONS			
Purpose	Location	Purpose	Location
PS/2 mouse port	J2	Floppy drive interface	J6
Serial port 2	J3	VGA port	J9
Serial port 1	J4	IDE interface	J10
Parallel port	J5	Riser card slot	SL1

Continued on next page. . .

# COMPAQ COMPUTER CORPORATION PROLINEA (386SX-BASED MODELS)

... continued from previous page

USER CONFIGURABLE SETTINGS		
Function	Jumper	Position
í Mouse select enabled	P1	Closed
Mouse select disabled	P1	Open
í On-board VGA select disabled	P5	pins 1 & 2 closed
On-board VGA select enabled	P5	pins 2 & 3 closed
í Battery type select external	P9	pins 1 & 2 closed
Battery type select internal	P9	pins 2 & 3 closed
CMOS memory clear	P9	Open
í Factory configured - do not alter	P10	N/A
í Factory configured - do not alter	P11	N/A
í Speaker select internal	P12	pins 1 & 2 closed
Speaker select external	P12	pins 2 & 3 closed
í Factory configured - do not alter	P13	N/A

DRAM CONFIGURATION		
Size	Bank 0	Bank 1
2MB	(2) 256K x 36	NONE
4MB	(2) 256K x 36	(2) 256K x 36
8MB	(2) 1M x 36	NONE
16MB	(2) 1M x 36	(2) 1M x 36