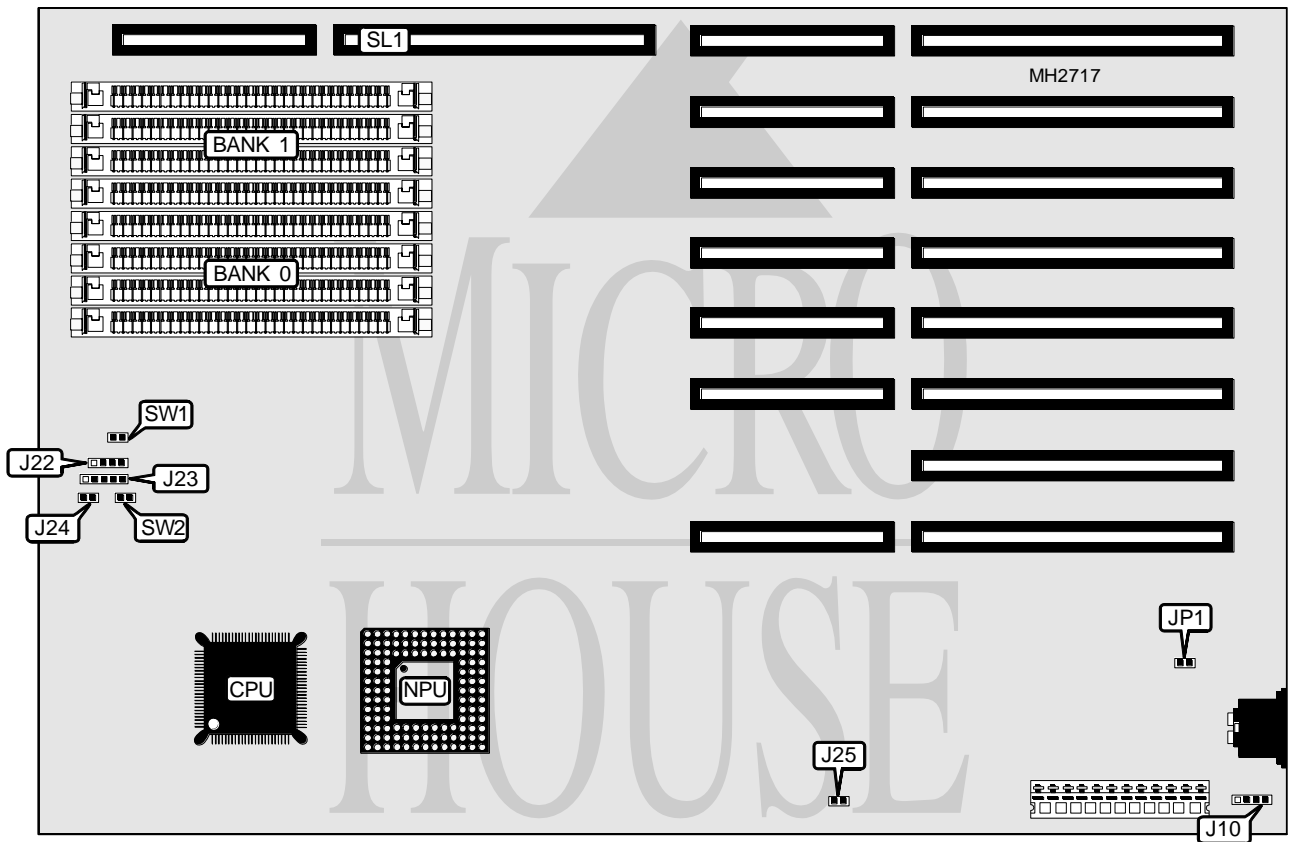


# CHICONY, INC.

## CH-386-25C

<b>Processor</b>	80386DX
<b>Processor Speed</b>	25MHz
<b>Chip Set</b>	OPTI
<b>Max. Onboard DRAM</b>	16MB (8MB on external memory card)
<b>Cache</b>	None
<b>BIOS</b>	Unidentified
<b>Dimensions</b>	330mm x 218mm
<b>I/O Options</b>	External memory card
<b>NPU Options</b>	80387DX/3167



CONNECTIONS			
Purpose	Location	Purpose	Location
External battery	J10	External memory card	SL1
Speaker	J22	Reset switch	SW1
Power LED & keylock	J23	Turbo LED	SW2

Continued on next page. . .

**CHICONY, INC.**  
**CH-386-25C**

... continued from previous page

USER CONFIGURABLE SETTINGS		
Function	Jumper	Position
í CMOS memory normal operation	J25	Closed
CMOS memory clear	J25	Open
í Monitor type select monochrome	JP1	Open
Monitor type select color	JP1	Closed

DRAM CONFIGURATION				
Size	Bank 0	Bank 1	Bank 2	Bank 3
1MB	(4) 256K x 9	NONE	NONE	NONE
2MB	(4) 256K x 9	(4) 256K x 9	NONE	NONE
3MB	(4) 256K x 9	(4) 256K x 9	(4) 256K x 9	NONE
4MB	(4) 256K x 9	(4) 256K x 9	(4) 256K x 9	(4) 256K x 9
4MB	(4) 1M x 9	NONE	NONE	NONE
5MB	(4) 256K x 9	(4) 1M x 9	NONE	NONE
5MB	(4) 1M x 9	(4) 256K x 9	NONE	NONE
6MB	(4) 256K x 9	(4) 1M x 9	(4) 256K x 9	NONE
6MB	(4) 1M x 9	(4) 256K x 9	(4) 256K x 9	NONE
7MB	(4) 256K x 9	(4) 256K x 9	(4) 1M x 9	(4) 256K x 9
7MB	(4) 256K x 9	(4) 1M x 9	(4) 256K x 9	(4) 256K x 9
7MB	(4) 1M x 9	(4) 256K x 9	(4) 256K x 9	(4) 256K x 9
8MB	(4) 1M x 9	(4) 1M x 9	NONE	NONE
9MB	(4) 256K x 9	(4) 1M x 9	(4) 1M x 9	NONE
9MB	(4) 1M x 9	(4) 1M x 9	(4) 256K x 9	NONE
9MB	(4) 1M x 9	(4) 256K x 9	(4) 1M x 9	NONE
10MB	(4) 256K x 9	(4) 256K x 9	(4) 1M x 9	(4) 1M x 9
10MB	(4) 256K x 9	(4) 1M x 9	(4) 1M x 9	(4) 256K x 9
10MB	(4) 1M x 9	(4) 1M x 9	(4) 256K x 9	(4) 256K x 9
10MB	(4) 1M x 9	(4) 256K x 9	(4) 1M x 9	(4) 256K x 9
12MB	(4) 1M x 9	(4) 1M x 9	(4) 1M x 9	NONE
13MB	(4) 256K x 9	(4) 1M x 9	(4) 1M x 9	(4) 1M x 9
13MB	(4) 1M x 9	(4) 1M x 9	(4) 1M x 9	(4) 256K x 9
13MB	(4) 1M x 9	(4) 256K x 9	(4) 1M x 9	(4) 1M x 9
16MB	(4) 1M x 9	(4) 1M x 9	(4) 1M x 9	(4) 1M x 9

Note: Banks 2 & 3 are located on the external memory card.