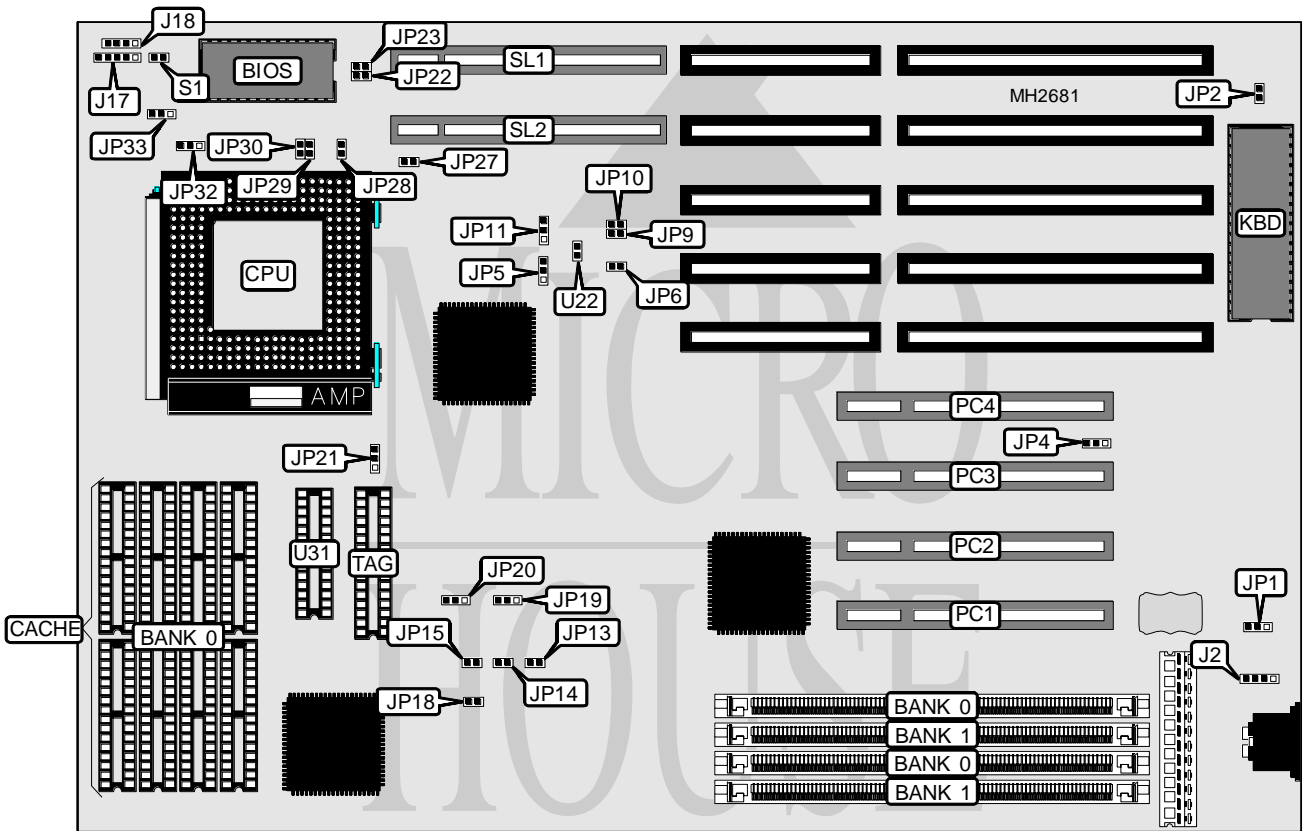


# VISION TECHNOLOGIES P V P T

<b>Processor</b>	Pentium
<b>Processor Speed</b>	75/90/100MHz
<b>Chip Set</b>	OPTI
<b>Max. Onboard DRAM</b>	128MB
<b>Cache</b>	64/256/512KB
<b>BIOS</b>	AMI
<b>Dimensions</b>	330mm x 218mm
<b>I/O Options</b>	32-bit VESA local bus slots (2), 32-bit PCI slots (4)
<b>NPU Options</b>	None



CONNECTIONS			
Purpose	Location	Purpose	Location
External battery	J2	32-bit PCI slots	PC1 - PC4
Power LED & keylock	J17	Reset switch	S1
Speaker	J18	32-bit VESA local bus slots	SL1 & SL2

Continued on next page. . .

# VISION TECHNOLOGIES

## P V P T

... continued from previous page

USER CONFIGURABLE SETTINGS		
Function	Jumper	Position
í CMOS memory select normal operation	JP1	pins 2 & 3 closed
CMOS memory select clear	JP1	pins 1 & 2 closed
í Monitor type select color	JP2	Open
Monitor type select monochrome	JP2	Closed
í Flash memory voltage select normal	JP4	Open
Flash memory voltage select 5v	JP4	pins 1 & 2 closed
Flash memory voltage select 12v	JP4	pins 2 & 3 closed
í CPUCLK output select	JP11	pins 1 & 2 closed
Clock oscillator select	JP11	pins 2 & 3 closed
í Back to back I/O delay select slow	JP15	Open
Back to back I/O delay select fast	JP15	Closed
í LDEV sample select end of first T2	JP18	Open
LDEV sample select end of second T2	JP18	Closed
í Cache type select always invalidated	JP20	pins 1 & 2 closed
Cache type select invalidated on write only	JP20	pins 2 & 3 closed
í Factory configured - do not alter	JP32	N/A

DRAM CONFIGURATION		
Size	Bank 0	Bank 1
2MB	(2) 256K x 36	NONE
4MB	(2) 512K x 36	NONE
4MB	(2) 256K x 36	(2) 256K x 36
6MB	(2) 256K x 36	(2) 512K x 36
8MB	(2) 1M x 36	NONE
8MB	(2) 512K x 36	(2) 512K x 36
10MB	(2) 256K x 36	(2) 1M x 36
12MB	(2) 512K x 36	(2) 1M x 36
16MB	(2) 2M x 36	NONE
16MB	(2) 1M x 36	(2) 1M x 36
18MB	(2) 256K x 36	(2) 2M x 36
20MB	(2) 512K x 36	(2) 2M x 36
24MB	(2) 1M x 36	(2) 2M x 36
32MB	(2) 4M x 36	NONE
32MB	(2) 2M x 36	(2) 2M x 36
34MB	(2) 256K x 36	(2) 4M x 36
36MB	(2) 512K x 36	(2) 4M x 36
40MB	(2) 1M x 36	(2) 4M x 36
48MB	(2) 2M x 36	(2) 4M x 36
64MB	(2) 8M x 36	NONE
64MB	(2) 4M x 36	(2) 4M x 36
66MB	(2) 256K x 36	(2) 8M x 36
68MB	(2) 512K x 36	(2) 8M x 36
72MB	(2) 1M x 36	(2) 8M x 36

Continued on next page...

# VISION TECHNOLOGIES

## PVPT

... continued from previous page

DRAM CONFIGURATION (CON'T)		
Size	Bank 0	Bank 1
80MB	(2) 2M x 36	(2) 8M x 36
96MB	(2) 4M x 36	(2) 8M x 36
128MB	(2) 8M x 36	(2) 8M x 36

CACHE CONFIGURATION			
Size	Bank 0	TAG	DIRTY (U31)
64KB	(8) 8K x 8	(1) 8K x 8	(1) 16K x 1
256KB	(8) 32K x 8	(1) 32K x 8	(1) 16K x 1
512KB	(8) 64K x 8	(1) 64K x 8	(1) 16K x 1

CACHE JUMPER CONFIGURATION			
Size	JP28	JP29	JP30
64KB	Open	Open	Open
256KB	Open	Closed	Closed
512KB	Closed	Closed	Closed

CACH VOLTAGE CONFIGURATION			
Setting	JP19	JP21	JP27
3.3v	pins 1 & 2 closed	pins 1 & 2 closed	Closed
5v	pins 2 & 3 closed	pins 2 & 3 closed	Open

CPU SPEED CONFIGURATION				
Speed	JP6	JP9	JP10	JP33
75MHz	Open	Open	Open	Open
90MHz	Closed	Closed	Open	Open
100MHz	Closed	Open	Open	Open

CPUCLK CONFIGURATION		
Setting	JP5	U22
MCLK2 selected as ECLK	pins 1 & 2 closed	Not Installed
U22 selected as ECLK	pins 2 & 3 closed	Installed

LCLK CONFIGURATION		
Setting	JP13	JP14
LCLK/2	Open	Open
LCLK/3	Closed	Open
LCLK/4	Open	Closed
LCLK/5	Closed	Closed

Continued on next page...

## VISION TECHNOLOGIES

## P V P T

*... continued from previous page*

VESA WAIT STATE CONFIGURATION	
Wait states	JP23
0 wait states	Open
1 wait state	Closed

BUS SPEED CONFIGURATION	
CPU speed	JP22
$\leq 33\text{MHz}$	Open
$> 33\text{MHz}$	Closed