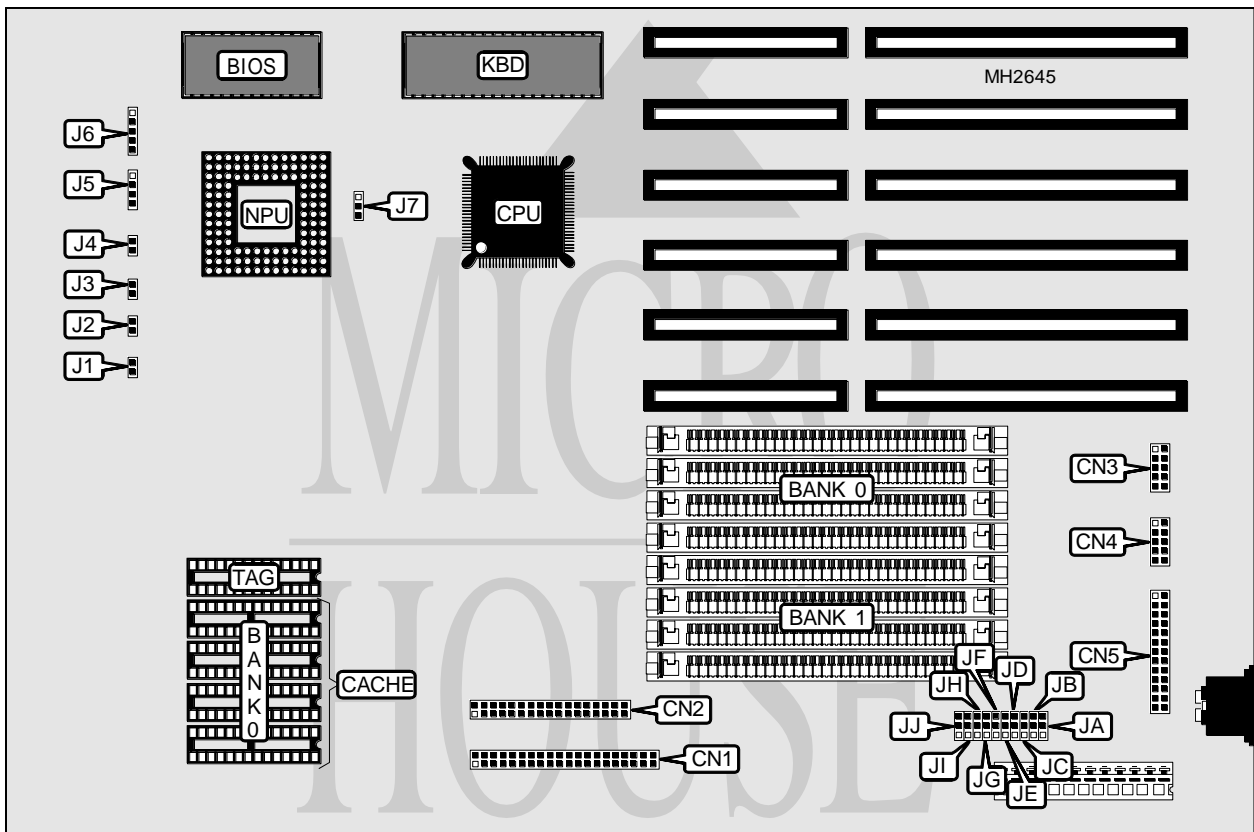


# PEACOCK AG 80386DX-40 (SYMPHONY)

<b>Processor</b>	80386DX
<b>Processor Speed</b>	40MHz
<b>Chip Set</b>	Symphony
<b>Max. Onboard DRAM</b>	32MB
<b>Cache</b>	128KB
<b>BIOS</b>	AMI
<b>Dimensions</b>	330mm x 218mm
<b>I/O Options</b>	Floppy drive interface, IDE interface, parallel port, serial ports (2)
<b>NPU Options</b>	80387DX/3167



CONNECTIONS			
Purpose	Location	Purpose	Location
IDE interface	CN1	Turbo LED	J2
Floppy drive interface	CN2	Turbo switch	J3
Serial port 1	CN3	Reset switch	J4
Serial port 2	CN4	Speaker	J5
Parallel port	CN5	Power LED & keylock	J6
IDE interface LED	J1		

Continued on next page . . .

# PEACOCK AG

## 80386DX-40 (SYMPHONY)

... continued from previous page

USER CONFIGURABLE SETTINGS		
Function	Jumper	Position
í NPU synchronous with CPU	J7	pins 1 & 2 closed
NPU asynchronous with CPU	J7	pins 2 & 3 closed
í Parallel port unidirectional (printer)	JG	pins 1 & 2 closed
Parallel port bidirectional	JG	pins 2 & 3 closed
í IDE interface enabled	JH	pins 1 & 2 closed
IDE interface disabled	JH	pins 2 & 3 closed
í Floppy drive interface enabled	JI	pins 1 & 2 closed
Floppy drive interface disabled	JI	pins 2 & 3 closed
í Monitor type select color	JJ	pins 2 & 3 closed
Monitor type select monochrome	JJ	pins 1 & 2 closed

DRAM CONFIGURATION		
Size	Bank 0	Bank 1
1MB	(4) 256K x 9	NONE
2MB	(4) 256K x 9	(4) 256K x 9
4MB	(4) 1M x 9	NONE
5MB	(4) 1M x 9	(4) 256K x 9
5MB	(4) 256K x 9	(4) 1M x 9
8MB	(4) 1M x 9	(4) 1M x 9
16MB	(4) 4M x 9	NONE
17MB	(4) 256K x 9	(4) 4M x 9
17MB	(4) 4M x 9	(4) 256K x 9
20MB	(4) 4M x 9	(4) 1M x 9
20MB	(4) 1M x 9	(4) 4M x 9
32MB	(4) 4M x 9	(4) 4M x 9

PARALLEL PORT CONFIGURATION		
Setting	JE	JF
Disabled	pins 1 & 2 closed	pins 1 & 2 closed
278H	pins 2 & 3 closed	pins 1 & 2 closed
378H	pins 1 & 2 closed	pins 2 & 3 closed
3BCH	pins 2 & 3 closed	pins 2 & 3 closed

SERIAL PORT 1 CONFIGURATION		
Setting	JA	JB
Disabled	pins 1 & 2 closed	pins 1 & 2 closed
2E8H	pins 2 & 3 closed	pins 2 & 3 closed
3E8H	pins 1 & 2 closed	pins 2 & 3 closed
3F8H	pins 2 & 3 closed	pins 1 & 2 closed

Continued on next page...

---

PEACOCK AG  
80386DX-40 (SYMPHONY)

... continued from previous page

SERIAL PORT 2 CONFIGURATION		
Setting	JC	JD
Disabled	pins 1 & 2 closed	pins 1 & 2 closed
2E8H	pins 1 & 2 closed	pins 2 & 3 closed
2F8H	pins 2 & 3 closed	pins 1 & 2 closed
3E8H	pins 2 & 3 closed	pins 2 & 3 closed