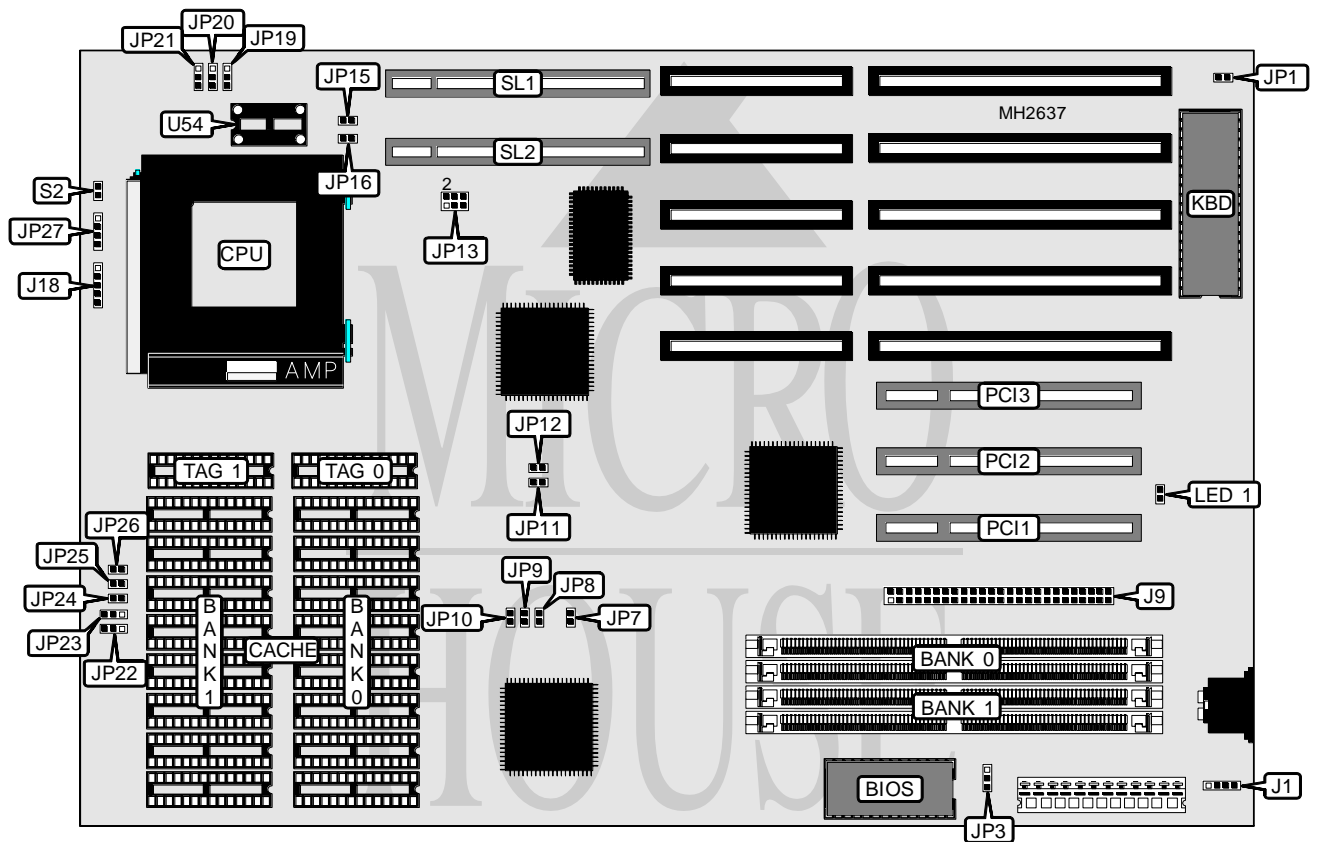


SHUTTLE COMPUTER INTERNATIONAL, INC.

HOT-523

Processor	Pentium
Processor Speed	60/66MHz
Chip Set	OPT1
Max. Onboard DRAM	128MB
Cache	64/128/256/512KB
BIOS	Award
Dimensions	330mm x 220mm
I/O Options	32-bit VESA local bus slots (2), 32-bit PCI slots (3)
NPU Options	None



CONNECTIONS			
Purpose	Location	Purpose	Location
External battery	J1	SCSI read/write connector	LED 1
SCSI connector	J9	32-bit PCI slots	PCI1 - PCI3
Power LED & keylock	J18	Reset switch	S2
Speaker	JP27	32-bit VESA local bus slots	SL1 - SL2

Continued on next page. . .

SHUTTLE COMPUTER INTERNATIONAL, INC.

HOT - 523

... continued from previous page

USER CONFIGURABLE SETTINGS		
Function	Jumper	Position
í Monitor type select color	JP1	Closed
Monitor type select monochrome	JP1	Open
í Factory configured - do not alter	JP3	N/A
í Back-to-Back I/O cycle select fast	JP9	Open
Back-to-Back I/O cycle select slow	JP9	Closed
í LDEV# type select end of first T2	JP10	Open
LDEV# type select end of second T2	JP10	Closed
í Factory configured - do not alter	JP12	N/A

DRAM CONFIGURATION		
Size	Bank 0	Bank 1
2MB	(2) 256K x 36	NONE
4MB	(2) 512K x 36	NONE
4MB	(2) 256K x 36	(2) 256K x 36
6MB	(2) 256K x 36	(2) 512K x 36
8MB	(2) 1M x 36	NONE
8MB	(2) 512K x 36	(2) 512K x 36
10MB	(2) 256K x 36	(2) 1M x 36
12MB	(2) 512K x 36	(2) 1M x 36
16MB	(2) 2M x 36	NONE
16MB	(2) 1M x 36	(2) 1M x 36
18MB	(2) 256K x 36	(2) 2M x 36
20MB	(2) 512K x 36	(2) 2M x 36
24MB	(2) 1M x 36	(2) 2M x 36
32MB	(2) 4M x 36	NONE
32MB	(2) 2M x 36	(2) 2M x 36
40MB	(2) 1M x 36	(2) 4M x 36
48MB	(2) 2M x 36	(2) 4M x 36
64MB	(2) 8M x 36	NONE
64MB	(2) 4M x 36	(2) 4M x 36
72MB	(2) 1M x 36	(2) 8M x 36
80MB	(2) 2M x 36	(2) 8M x 36
96MB	(2) 4M x 36	(2) 8M x 36
128MB	(2) 8M x 36	(2) 8M x 36

CACHE CONFIGURATION				
Size	Bank 0	Bank 1	TAG0	TAG1
64KB	(8) 8K x 8	NONE	(1) 8K x 8	(1) 8K x 8
128KB	(8) 8K x 8	(8) 8K x 8	(1) 8K x 8	(1) 8K x 8
256KB	(8) 32K x 8	NONE	(1) 8K x 8	(1) 8K x 8
512KB	(8) 32K x 8	(8) 32K x 8	(1) 8K x 8	(1) 8K x 8

Continued on next page...

SHUTTLE COMPUTER INTERNATIONAL, INC.

HOT - 523

... continued from previous page

CACHE JUMPER CONFIGURATION						
Size	JP21	JP22	JP23	JP24	JP25	JP26
64KB	1 & 2	1 & 2	1 & 2	Open	Open	Open
128KB	2 & 3	2 & 3	2 & 3	Open	Open	Closed
256KB	1 & 2	1 & 2	1 & 2	Open	Closed	Closed
512KB	2 & 3	2 & 3	2 & 3	Closed	Closed	Closed

Note: Pins designated should be in closed position.

CPU SPEED CONFIGURATION	
Speed	JP13
60MHz	pins 3 & 4 closed
66MHz	pins 1 & 2, 5 & 6 closed

AT BUS CLOCK CONFIGURATION		
Type	JP7	JP8
LCLK/2	Open	Open
LCLK/3	Open	Closed
LCLK/4	Closed	Open
LCLK/5	Closed	Closed

LCLK CONFIGURATION				
Setting	U54	JP11	JP19	JP20
External	Installed	Closed	pins 1 & 2 closed	pins 1 & 2 closed
Internal	Not Installed	Open	pine 2 & 3 closed	pins 2 & 3 closed

VESA WAIT STATE CONFIGURATION	
Wait states	JP15
0 wait states	Open
1 wait state	Closed

BUS SPEED CONFIGURATION	
CPU speed	JP16
<= 33MHz	Open
> 33MHz	Closed