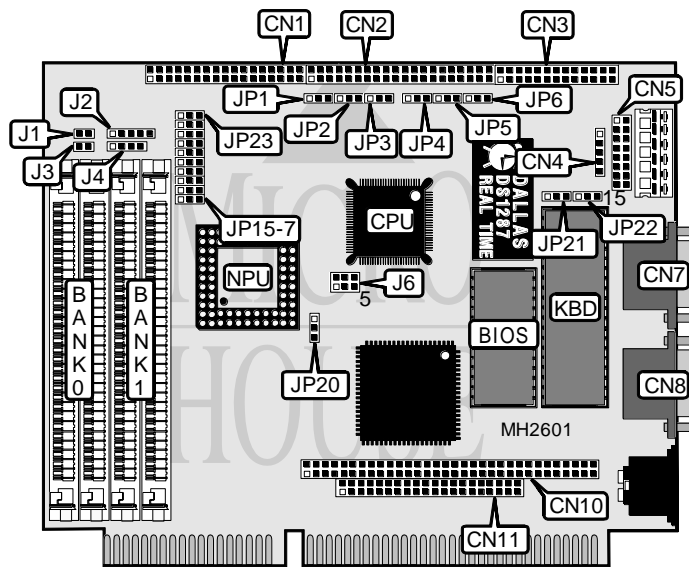


AXIOM TECHNOLOGY, INC.

AX8025H

Processor	80386SX/CX486SLC
Processor Speed	20/25/33/40MHz
Chip Set	ALI
Max. Onboard DRAM	16MB
Cache	None
BIOS	AMI
Dimensions	169mm x 122mm
I/O Options	Floppy drive interface, IDE interface, parallel port, serial ports (2)
NPU Options	80387SX/CX387



CONNECTIONS			
Purpose	Location	Purpose	Location
Floppy drive interface	CN1	PC/104 bus connector	CN11
IDE interface	CN2	Reset switch	J1
Parallel port	CN3	Power LED & keylock	J2
Auxiliary keyboard connector	CN4	IDE interface LED	J3
Serial port 1	CN7	Speaker	J4
Serial port 2	CN8	External battery	J5
PC/104 bus connector	CN10		

Note: The location of jumper J5 is unidentified.

Continued on next page. . .

AXIOM TECHNOLOGY, INC.
AX8025H

... continued from previous page

USER CONFIGURABLE SETTINGS		
Function	Jumper	Position
í Parallel port IRQ select IRQ7	CN5	pins 13 & 14 closed
Parallel port IRQ select IRQ5	CN5	pins 15 & 16 closed
í Activate NMI to reset CPU when watch dog times out	JP1	pins 1 & 2 closed
Reset system when watch dog times out	JP1	pins 2 & 3 closed
Watch dog disabled	JP1	Open
í External battery type select DS1287/1187	JP2	pins 1 & 2 closed
External battery type select MC146818	JP2	pins 2 & 3 closed
í Parity check enabled	JP3	pins 1 & 2 closed
Parity check disabled	JP3	pins 2 & 3 closed
í Watch dog timer normal	JP4	pins 2 & 3 closed
Watch dog timer reset	JP4	pins 1 & 2 closed
í IDE interface pin 34 used	JP5	pins 2 & 3 closed
IDE interface pin 34 not used	JP5	pins 1 & 2 closed
í Monitor type select monochrome	JP6	pins 1 & 2 closed
Monitor type select color	JP6	pins 2 & 3 closed
í IDE interface enabled	JP7	pins 2 & 3 closed
IDE interface disabled	JP7	pins 1 & 2 closed
í Floppy drive interface enabled	JP8	pins 2 & 3 closed
Floppy drive interface disabled	JP8	pins 1 & 2 closed
í NPU synchronous with CPU	JP15	pins 2 & 3 closed
NPU asynchronous with CPU	JP15	pins 1 & 2 closed
í Time out period select 1 second	JP21	pins 1 & 2 closed
Time out period select 10 seconds	JP21	pins 2 & 3 closed
í Parallel port unidirectional (printer)	JP23	pins 1 & 2 closed
Parallel port bidirectional	JP23	pins 2 & 3 closed

DRAM CONFIGURATION		
Size	Bank 0	Bank 1
1MB	(2) 256K x 9	(2) 256K x 9
2MB	(2) 1M x 9	NONE
4MB	(2) 1M x 9	(2) 1M x 9
8MB	(2) 4M x 9	NONE
16MB	(2) 4M x 9	(2) 4M x 9

CPU TYPE CONFIGURATION	
Type	J6
80386SX	Open
CX486SLC	pins 1 & 2, 3 & 4, 5 & 6 closed

CPU SPEED CONFIGURATION		
Speed	JP20	JP22
20MHz	pins 1 & 2 closed	pins 2 & 3 closed
25MHz	pins 2 & 3 closed	pins 1 & 2 closed
33MHz	pins 2 & 3 closed	pins 2 & 3 closed
40MHz	pins 1 & 2 closed	pins 1 & 2 closed

Continued on next page. . .

AXIOM TECHNOLOGY, INC.
AX8025H

... continued from previous page

PARALLEL PORT CONFIGURATION		
Setting	JP13	JP14
278	pins 2 & 3 closed	pins 2 & 3 closed
378	pins 1 & 2 closed	pins 1 & 2 closed
3BC	pins 1 & 2 closed	pins 2 & 3 closed
Disabled	pins 2 & 3 closed	pins 1 & 2 closed

SERIAL PORT 1 CONFIGURATION		
Setting	JP9	JP10
2E8	pins 2 & 3 closed	pins 1 & 2 closed
3E8	pins 1 & 2 closed	pins 1 & 2 closed
3F8	pins 2 & 3 closed	pins 2 & 3 closed
Disabled	pins 1 & 2 closed	pins 2 & 3 closed

SERIAL PORT 2 CONFIGURATION		
Setting	JP11	JP12
2E8	pins 1 & 2 closed	pins 1 & 2 closed
2F8	pins 2 & 3 closed	pins 2 & 3 closed
3E8	pins 2 & 3 closed	pins 1 & 2 closed
Disabled	pins 1 & 2 closed	pins 2 & 3 closed

SERIAL PORT 1 INTERRUPT CONFIGURATION	
IRQ	CN5
IRQ3	pins 3 & 4 closed
IRQ4	pins 1 & 2 closed
IRQ5	pins 5 & 6 closed

SERIAL PORT 2 INTERRUPT CONFIGURATION	
IRQ	CN5
IRQ3	pins 7 & 8 closed
IRQ4	pins 9 & 10 closed
IRQ5	pins 11 & 12 closed