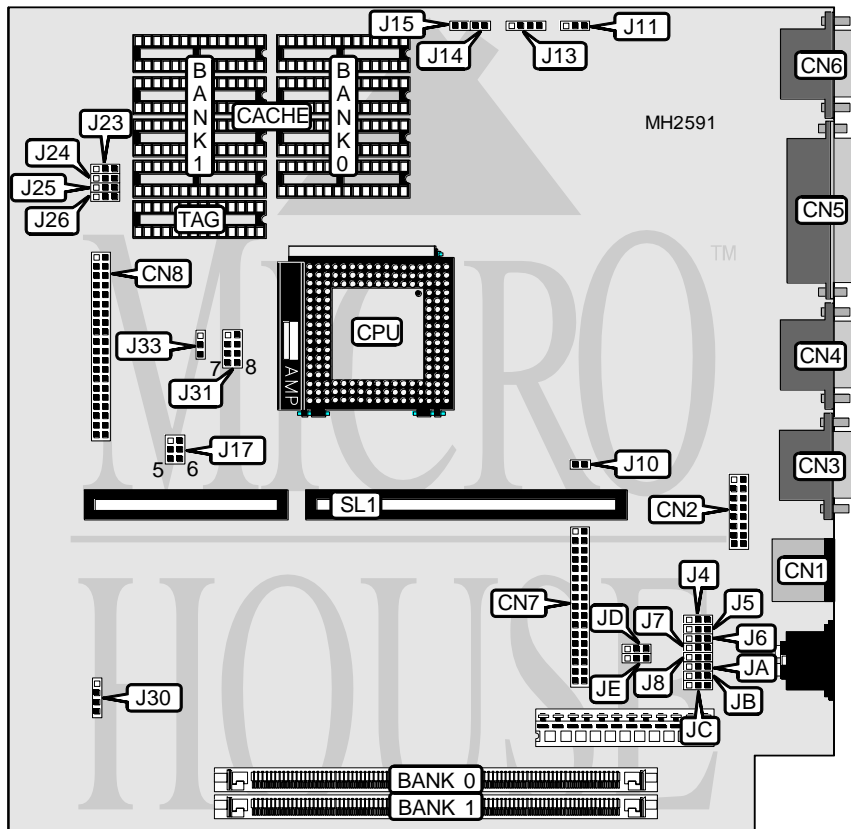


EPSON, INC. ACTION TOWER 3000

Processor	80486SX/80487SX/80486SX2/80486DX/80486DX2/80486DX4/Pentium Overdrive
Processor Speed	25/33/40/50(internal)/50/66(internal)/75(internal)/100(internal)MHz
Chip Set	Unidentified
Max. Onboard DRAM	64MB
Cache	64/128/256KB
BIOS	Unidentified
Dimensions	254mm x 218mm
I/O Options	Floppy drive interface, game port, IDE interface, parallel port, PS/2 mouse port, serial ports (2), VGA port
NPU Options	None



CONNECTIONS			
Purpose	Location	Purpose	Location
PS/2 mouse port	CN1	VGA port	CN6
Game interface	CN2	Floppy drive interface	CN7
Serial port 1	CN3	IDE interface	CN8
Serial port 2	CN4	External battery	J30
Parallel port	CN5	Riser Card	SL1

Continued on next page. . .

EPSON, INC.
ACTION TOWER 3000

... continued from previous page

USER CONFIGURABLE SETTINGS		
Function	Jumper	Position
í Game interface disabled	J4	pins 2 & 3 closed
Game interface enabled	J4	pins 1 & 2 closed
í Parallel port LPT select LPT1	J5	pins 1 & 2 closed
Parallel port LPT select LPT2	J5	pins 2 & 3 closed
í Serial port 1 COM select COM1	J6	pins 1 & 2 closed
Serial port 1 COM select COM3	J6	pins 2 & 3 closed
í Serial port 2 COM select COM2	J7	pins 1 & 2 closed
Serial port 2 COM select COM4	J7	pins 2 & 3 closed
í Floppy drive interface enabled	J8	pins 1 & 2 closed
Floppy drive interface disabled	J8	pins 2 & 3 closed
í VGA interrupt enabled	J10	Closed
VGA interrupt disabled	J10	Open
í Battery type select internal	J30	pins 2 & 3 closed
Battery type select external	J30	Closed
CMOS memory clear	J30	pins 3 & 4 closed
í Parallel port enabled	JA	pins 1 & 2 closed
Parallel port disabled	JA	pins 2 & 3 closed
í Serial port 1 enabled	JC	pins 1 & 2 closed
Serial port 1 disabled	JC	pins 2 & 3 closed
í Serial port 2 enabled	JD	pins 1 & 2 closed
Serial port 2 disabled	JD	pins 2 & 3 closed

DRAM CONFIGURATION		
Size	Bank 0	Bank 1
1MB	(1) 256K x 36	NONE
2MB	(1) 256K x 36	(1) 256K x 36
2MB	(1) 512K x 36	NONE
3MB	(1) 512K x 36	(1) 256K x 36
3MB	(1) 256K x 36	(1) 512K x 36
4MB	(1) 1M x 36	NONE
5MB	(1) 1M x 36	(1) 256K x 36
6MB	(1) 1M x 36	(1) 512K x 36
8MB	(1) 1M x 36	(1) 1M x 36
8MB	(1) 2M x 36	NONE
9MB	(1) 2M x 36	(1) 256K x 36
10MB	(1) 2M x 36	(1) 512K x 36
12MB	(1) 2M x 36	(1) 1M x 36
16MB	(1) 2M x 36	(1) 2M x 36
16MB	(1) 4M x 36	NONE
17MB	(1) 4M x 36	(1) 256K x 36
18MB	(1) 4M x 36	(1) 512K x 36
20MB	(1) 4M x 36	(1) 1M x 36
24MB	(1) 4M x 36	(1) 2M x 36
32MB	(1) 4M x 36	(1) 4M x 36

Continued on next page. . .

EPSON, INC.

ACTION TOWER 3000

... continued from previous page

DRAM CONFIGURATION (CON'T)		
Size	Bank 0	Bank 1
32MB	(1) 8M x 36	NONE
33MB	(1) 8M x 36	(1) 256K x 36
34MB	(1) 8M x 36	(1) 512K x 36
36MB	(1) 8M x 36	(1) 1M x 36
40MB	(1) 8M x 36	(1) 2M x 36
48MB	(1) 8M x 36	(1) 4M x 36
48MB	(1) 4M x 36	(1) 8M x 36
64MB	(1) 8M x 36	(1) 8M x 36

CACHE CONFIGURATION			
Size	Bank 0	Bank 1	TAG
64KB	(4) 8K x 8	(4) 8K x 8	(1) 8K x 8
128KB	(4) 32K x 8	NONE	(1) 8K x 8
256KB	(4) 32K x 8	(4) 32K x 8	(1) 32K x 8

CACHE JUMPER CONFIGURATION				
Size	J23	J24	J25	J26
64KB	pins 1 & 2 closed	pins 1 & 2 closed	Open	pins 2 & 3 closed
128KB	pins 2 & 3 closed	pins 1 & 2 closed	pins 1 & 2 closed	pins 1 & 2 closed
256KB	pins 2 & 3 closed	pins 2 & 3 closed	pins 2 & 3 closed	pins 2 & 3 closed

CPU TYPE CONFIGURATION		
Type	J11	J13
80486SX	Open	pins 2 & 3 closed
80487SX	pins 2 & 3 closed	pins 1 & 2, 3 & 4 closed
80486SX2	pins 1 & 2 closed or Open	pins 2 & 3 closed
80486DX	pins 1 & 2 closed	pins 1 & 2, 3 & 4 closed
80486DX2	pins 1 & 2 closed	pins 1 & 2, 3 & 4 closed
80486DX4	pins 1 & 2 closed	pins 1 & 2, 3 & 4 closed
Pentium Overdrive	pins 2 & 3 closed	pins 1 & 2, 3 & 4 closed

CPU SPEED CONFIGURATION	
Speed	J17
25MHz	pins 5 & 6 closed
33MHz	pins 1 & 2 closed
40MHz	pins 1 & 2, 3 & 4 closed
50iMHz	pins 5 & 6 closed
50MHz	pins 3 & 4 closed
66iMHz	pins 1 & 2 closed
75iMHz	pins 5 & 6 closed
100iMHz	pins 1 & 2 closed

Continued on next page...

EPSON, INC.

ACTION TOWER 3000

... continued from previous page

CPU VOLTAGE CONFIGURATION		
Voltage	J31	J33
3.3/3.45v	pins 5 & 6, 7 & 8 closed	pins 1 & 2 closed
3.6v	pins 5 & 6, 7 & 8 closed	pins 2 & 3 closed
5v	pins 1 & 2, 3 & 4 closed	Open

VIDEO CONFIGURATION		
Setting	J14	J15
On board VGA enabled	Closed	Closed
On board VGA disabled	Open	Open

IDE INTERFACE CONFIGURATION		
Setting	JB	JE
Enabled	pins 1 & 2 closed	pins 1 & 2 closed
Disabled	pins 2 & 3 closed	pins 2 & 3 closed