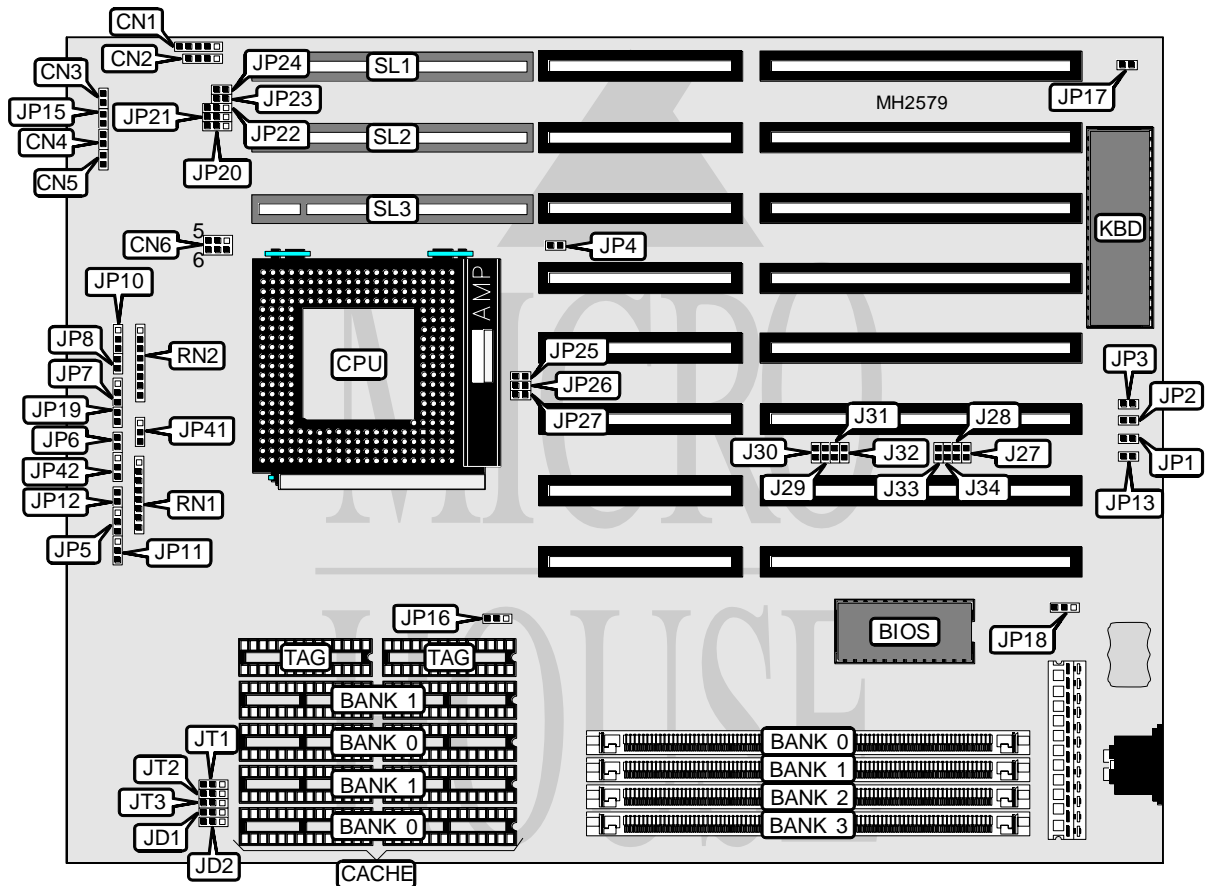


# YOUNG MICRO SYSTEMS, INC.

## VS48664-3VL

|                          |  |
|--------------------------|--|
| <b>Processor</b>         | CXM6/AM486SX/SL80486/80486SX/CXM7/AM486DX/80486DX/80486DX2/<br>P24C/P24D/Pentium Overdrive |
| <b>Processor Speed</b>   | 25/33/40/50(internal)/50/66(internal)MHz   |
| <b>Chip Set</b>          | Symphony   |
| <b>Max. Onboard DRAM</b> | 128MB  |
| <b>Cache</b>             | 64/128/256/512/1024KB  |
| <b>BIOS</b>              | AMI/Phoenix  |
| <b>Dimensions</b>        | 330mm x 218mm  |
| <b>I/O Options</b>       | 32-bit VESA local bus slots (3), green PC connector  |
| <b>NPU Options</b>       | None   |



| CONNECTIONS         |          |                             |           |
|---------------------|----------|-----------------------------|-----------|
| Purpose             | Location | Purpose                     | Location  |
| Power LED & keylock | CN1      | Turbo LED                   | CN5       |
| Speaker             | CN2      | Green PC connector          | JP15      |
| Turbo switch        | CN3      | 32-bit VESA local bus slots | SL1 - SL3 |
| Reset switch        | CN4      |                             |           |

Continued on next page. . .

**YOUNG MICRO SYSTEMS, INC.**  
**VS48664-3VL**

... continued from previous page

| USER CONFIGURABLE SETTINGS          |        |                   |
|-------------------------------------|--------|-------------------|
| Function                            | Jumper | Position          |
| í Factory configured - do not alter | J27    | N/A               |
| í Factory configured - do not alter | J28    | N/A               |
| í Factory configured - do not alter | J29    | N/A               |
| í Factory configured - do not alter | J30    | N/A               |
| í Factory configured - do not alter | J31    | N/A               |
| í Factory configured - do not alter | J32    | N/A               |
| í Factory configured - do not alter | J33    | N/A               |
| í Factory configured - do not alter | J34    | N/A               |
| í Factory configured - do not alter | JP3    | N/A               |
| í Factory configured - do not alter | JP9    | N/A               |
| í Parity check enabled              | JP16   | pins 1 & 2 closed |
| Parity check disabled               | JP16   | pins 2 & 3 closed |
| í Monitor type select color         | JP17   | Closed            |
| Monitor type select monochrome      | JP17   | Open              |
| í BIOS type select normal           | JP18   | pins 1 & 2 closed |
| BIOS type select flash              | JP18   | pins 2 & 3 closed |
| í Factory configured - do not alter | JP19   | N/A               |
| í Factory configured - do not alter | JP22   | N/A               |
| í Factory configured - do not alter | JP28   | N/A               |
| í Factory configured - do not alter | JP29   | N/A               |
| í Factory configured - do not alter | JP30   | N/A               |
| í Factory configured - do not alter | JP31   | N/A               |

Note: The location of jumpers JP9, JP28, JP29, JP30 & JP31 are unidentified.

| DRAM CONFIGURATION |               |               |             |             |
|--------------------|---------------|---------------|-------------|-------------|
| Size               | Bank 0        | Bank 1        | Bank 2      | Bank 3      |
| 1MB                | (1) 256K x 36 | NONE          | NONE        | NONE        |
| 4MB                | (1) 512K x 36 | (1) 512K x 36 | NONE        | NONE        |
| 4MB                | (1) 1M x 36   | NONE          | NONE        | NONE        |
| 8MB                | (1) 1M x 36   | (1) 1M x 36   | NONE        | NONE        |
| 8MB                | (1) 2M x 36   | NONE          | NONE        | NONE        |
| 16MB               | (1) 4M x 36   | NONE          | NONE        | NONE        |
| 16MB               | (1) 1M x 36   | (1) 1M x 36   | (1) 1M x 36 | (1) 1M x 36 |
| 32MB               | (1) 4M x 36   | (1) 4M x 36   | NONE        | NONE        |
| 32MB               | (1) 2M x 36   | (1) 2M x 36   | (1) 2M x 36 | (1) 2M x 36 |
| 64MB               | (1) 8M x 36   | (1) 8M x 36   | NONE        | NONE        |
| 64MB               | (1) 4M x 36   | (1) 4M x 36   | (1) 4M x 36 | (1) 4M x 36 |
| 96MB               | (1) 8M x 36   | (1) 8M x 36   | (1) 4M x 36 | (1) 4M x 36 |
| 128MB              | (1) 8M x 36   | (1) 8M x 36   | (1) 8M x 36 | (1) 8M x 36 |

Continued on next page. ...

# YOUNG MICRO SYSTEMS, INC.

## VS48664-3VL

... continued from previous page

| CACHE CONFIGURATION |              |              |              |
|---------------------|--------------|--------------|--------------|
| Size                | Bank 0       | Bank 1       | TAG          |
| 64KB                | (4) 8K x 8   | (4) 8K x 8   | (2) 8K x 8   |
| 128KB               | (4) 32K x 8  | NONE         | (2) 8K x 8   |
| 256KB               | (4) 32K x 8  | (4) 32K x 8  | (2) 32K x 8  |
| 512KB               | (4) 128K x 8 | NONE         | (2) 32K x 8  |
| 1MB                 | (4) 128K x 8 | (4) 128K x 8 | (2) 128K x 8 |

| CACHE JUMPER CONFIGURATION |       |       |       |       |       |
|----------------------------|-------|-------|-------|-------|-------|
| Size                       | JD1   | JD2   | JT1   | JT2   | JT3   |
| 64KB                       | 2 & 3 | 2 & 3 | 1 & 2 | 1 & 2 | 1 & 2 |
| 128KB                      | 1 & 2 | 1 & 2 | 2 & 3 | 1 & 2 | 1 & 2 |
| 256KB                      | 2 & 3 | 2 & 3 | 2 & 3 | 2 & 3 | 1 & 2 |
| 512KB                      | 1 & 2 | 1 & 2 | 2 & 3 | 2 & 3 | 2 & 3 |
| 1MB                        | 2 & 3 | 2 & 3 | 2 & 3 | 2 & 3 | 2 & 3 |

Note: Pins designated should be in the closed position.

| CPU TYPE CONFIGURATION |        |        |        |       |        |
|------------------------|--------|--------|--------|-------|--------|
| Type                   | JP1    | JP2    | JP4    | JP5   | JP6    |
| CXM6 1x                | Open   | Open   | Open   | 2 & 3 | Closed |
| CXM6 2x                | Open   | Open   | Open   | 2 & 3 | Closed |
| AM486SX (WT)           | Open   | Closed | Open   | 2 & 3 | Closed |
| AM486SX (WB)           | Closed | Closed | Open   | 2 & 3 | Closed |
| SL80486                | Open   | Closed | Open   | 1 & 2 | Closed |
| 80486SX                | Open   | Open   | Open   | 2 & 3 | Closed |
| AM486DX (WT)           | Open   | Closed | Open   | 2 & 3 | Closed |
| AM486DX (WB)           | Closed | Closed | Closed | 2 & 3 | Closed |
| CXM7 1x                | Open   | Open   | Open   | 1 & 2 | Closed |
| CXM7 2x                | Open   | Open   | Open   | 1 & 2 | Closed |
| 80486DX                | Open   | Open   | Open   | 1 & 2 | Closed |
| 80486DX2               | Open   | Open   | Open   | 1 & 2 | Closed |
| P24C 2x                | Open   | Closed | Open   | 1 & 2 | Closed |
| P24C 3x                | Open   | Closed | Open   | 1 & 2 | Closed |
| P24D (WT)              | Open   | Closed | Open   | 1 & 2 | Closed |
| P24D (WB)              | Closed | Closed | Closed | 1 & 2 | Closed |
| P24T 2x (WT)           | Open   | Closed | Open   | 1 & 2 | Open   |
| P24T 2x (WB)           | Closed | Closed | Closed | 1 & 2 | Open   |
| P24T 3x (WT)           | Open   | Closed | Open   | 1 & 2 | Open   |
| P24T 3x (WB)           | Closed | Closed | Closed | 1 & 2 | Open   |

Note: Pins designated should be in the closed position.

Continued on next page. . .

**YOUNG MICRO SYSTEMS, INC.**  
**VS48664-3VL**

... continued from previous page

| CPU TYPE CONFIGURATION (CON'T) |       |        |       |       |        |
|--------------------------------|-------|--------|-------|-------|--------|
| Type                           | JP7   | JP8    | JP10  | JP11  | JP12   |
| CXM6 1x                        | 1 & 2 | Closed | Open  | Open  | Open   |
| CXM6 2x                        | 1 & 2 | Closed | Open  | Open  | Closed |
| AM486SX (WT)                   | Open  | Open   | Open  | Open  | Open   |
| AM486SX (WB)                   | Open  | Open   | Open  | Open  | Open   |
| SL80486                        | Open  | Open   | Open  | 1 & 2 | Open   |
| 80486SX                        | Open  | Open   | Open  | Open  | Open   |
| AM486DX (WT)                   | Open  | Open   | Open  | 1 & 2 | Open   |
| AM486DX (WB)                   | Open  | Open   | Open  | 1 & 2 | Open   |
| CXM7 1x                        | 1 & 2 | Closed | Open  | 1 & 2 | Open   |
| CXM7 2x                        | 1 & 2 | Closed | Open  | 1 & 2 | Closed |
| 80486DX                        | Open  | Open   | Open  | 1 & 2 | Open   |
| 80486DX2                       | Open  | Open   | Open  | 1 & 2 | Open   |
| P24C 2x                        | Open  | Open   | 1 & 2 | 2 & 3 | Open   |
| P24C 3x                        | Open  | Open   | Open  | 2 & 3 | Open   |
| P24D (WT)                      | 2 & 3 | Open   | Open  | 1 & 2 | Open   |
| P24D (WB)                      | 2 & 3 | Open   | Open  | 1 & 2 | Open   |
| P24T 2x (WT)                   | Open  | Open   | 1 & 2 | 2 & 3 | Open   |
| P24T 2x (WB)                   | Open  | Open   | 1 & 2 | 2 & 3 | Open   |
| P24T 3x (WT)                   | Open  | Open   | Open  | 2 & 3 | Open   |
| P24T 3x (WB)                   | Open  | Open   | Open  | 2 & 3 | Open   |

Note: Pins designated should be in the closed position.

| CPU TYPE CONFIGURATION (CON'T) |        |        |        |       |       |
|--------------------------------|--------|--------|--------|-------|-------|
| Type                           | JP13   | JP23   | JP24   | JP41  | JP42  |
| CXM6 1x                        | Closed | Closed | Closed | Open  | Open  |
| CXM6 2x                        | Closed | Closed | Closed | Open  | Open  |
| AM486SX (WT)                   | Open   | Open   | Open   | 2 & 3 | 2 & 3 |
| AM486SX (WB)                   | Open   | Open   | Open   | 2 & 3 | 2 & 3 |
| SL80486                        | Open   | Open   | Open   | Open  | Open  |
| 80486SX                        | Open   | Closed | Closed | Open  | Open  |
| AM486DX (WT)                   | Open   | Open   | Open   | 2 & 3 | 2 & 3 |
| AM486DX (WB)                   | Open   | Open   | Open   | 2 & 3 | 2 & 3 |
| CXM7 1x                        | Closed | Closed | Closed | Open  | Open  |
| CXM7 2x                        | Closed | Closed | Closed | Open  | Open  |
| 80486DX                        | Open   | Closed | Closed | Open  | Open  |
| 80486DX2                       | Open   | Closed | Closed | Open  | Open  |
| P24C 2x                        | Open   | Open   | Open   | Open  | Open  |
| P24C 3x                        | Open   | Open   | Open   | Open  | Open  |
| P24D (WT)                      | Open   | Open   | Open   | 1 & 2 | 1 & 2 |
| P24D (WB)                      | Open   | Open   | Open   | 1 & 2 | 1 & 2 |
| P24T 2x (WT)                   | Open   | Open   | Open   | Open  | Open  |
| P24T 2x (WB)                   | Open   | Open   | Open   | Open  | Open  |
| P24T 3x (WT)                   | Open   | Open   | Open   | Open  | Open  |
| P24T 3x (WB)                   | Open   | Open   | Open   | Open  | Open  |

Note: Pins designated should be in the closed position.

*Continued on next page. . .*

# YOUNG MICRO SYSTEMS, INC.

## VS48664-3VL

... continued from previous page

| CPU TYPE CONFIGURATION (CON'T) |                            |                            |
|--------------------------------|----------------------------|----------------------------|
| Type                           | RN1                        | RN2                        |
| CXM6 1x                        | Open                       | Open                       |
| CXM6 2x                        | Open                       | Open                       |
| AM486SX (WT)                   | Open                       | 1 & 2, 3 & 4, 5 & 6, 7 & 8 |
| AM486SX (WB)                   | Open                       | 1 & 2, 3 & 4, 5 & 6, 7 & 8 |
| SL80486                        | 1 & 2, 3 & 4, 5 & 6, 7 & 8 | 1 & 2, 3 & 4, 5 & 6, 7 & 8 |
| 80486SX                        | Open                       | Open                       |
| AM486DX (WT)                   | 1 & 2, 3 & 4, 5 & 6, 7 & 8 | 1 & 2, 3 & 4, 5 & 6, 7 & 8 |
| AM486DX (WB)                   | 1 & 2, 3 & 4, 5 & 6, 7 & 8 | 1 & 2, 3 & 4, 5 & 6, 7 & 8 |
| CXM7 1x                        | 1 & 2, 3 & 4, 5 & 6, 7 & 8 | Open                       |
| CXM7 2x                        | 1 & 2, 3 & 4, 5 & 6, 7 & 8 | Open                       |
| 80486DX                        | 1 & 2, 3 & 4, 5 & 6, 7 & 8 | Open                       |
| 80486DX2                       | 1 & 2, 3 & 4, 5 & 6, 7 & 8 | Open                       |
| P24C 2x                        | 1 & 2, 3 & 4, 5 & 6, 7 & 8 | 1 & 2, 3 & 4, 5 & 6, 7 & 8 |
| P24C 3x                        | 1 & 2, 3 & 4, 5 & 6, 7 & 8 | 1 & 2, 3 & 4, 5 & 6, 7 & 8 |
| P24D (WT)                      | 1 & 2, 3 & 4, 5 & 6, 7 & 8 | 1 & 2, 3 & 4, 5 & 6, 7 & 8 |
| P24D (WB)                      | 1 & 2, 3 & 4, 5 & 6, 7 & 8 | 1 & 2, 3 & 4, 5 & 6, 7 & 8 |
| P24T 2x (WT)                   | 1 & 2, 3 & 4, 5 & 6, 7 & 8 | 1 & 2, 3 & 4, 5 & 6, 7 & 8 |
| P24T 2x (WB)                   | 1 & 2, 3 & 4, 5 & 6, 7 & 8 | 1 & 2, 3 & 4, 5 & 6, 7 & 8 |
| P24T 3x (WT)                   | 1 & 2, 3 & 4, 5 & 6, 7 & 8 | 1 & 2, 3 & 4, 5 & 6, 7 & 8 |
| P24T 3x (WB)                   | 1 & 2, 3 & 4, 5 & 6, 7 & 8 | 1 & 2, 3 & 4, 5 & 6, 7 & 8 |

Note: Pins designated should be in the closed position.

| CPU SPEED CONFIGURATION |        |        |        |
|-------------------------|--------|--------|--------|
| Speed                   | JP25   | JP26   | JP27   |
| 25MHz                   | Closed | Open   | Closed |
| 33MHz                   | Open   | Open   | Closed |
| 40MHz                   | Closed | Closed | Open   |
| 50MHz                   | Closed | Open   | Closed |
| 50MHz                   | Open   | Closed | Open   |
| 66MHz                   | Open   | Open   | Closed |

| CPU VOLTAGE CONFIGURATION |                                 |
|---------------------------|---------------------------------|
| Voltage                   | CN6                             |
| 3.3v                      | Open                            |
| 5v                        | pins 1 & 2, 3 & 4, 5 & 6 closed |

| VESA WAIT STATE CONFIGURATION |                   |
|-------------------------------|-------------------|
| Wait states                   | JP20              |
| 0 wait states                 | pins 1 & 2 closed |
| 1 wait state                  | pins 2 & 3 closed |

| BUS SPEED CONFIGURATION |                   |
|-------------------------|-------------------|
| CPU speed               | JP21              |
| <= 33MHz                | pins 1 & 2 closed |
| > 33MHz                 | pins 2 & 3 closed |