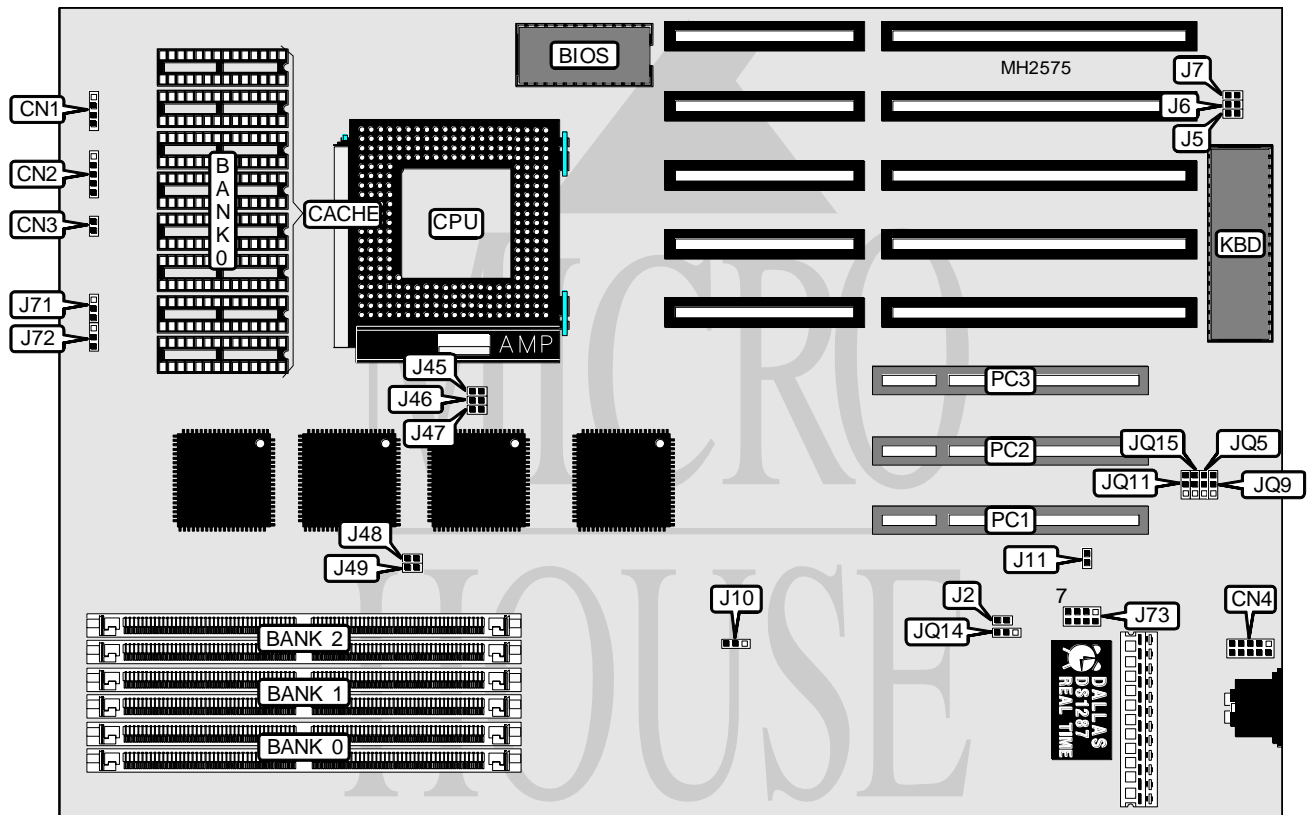


# YOUNG MICRO SYSTEMS, INC. VEGA VI-P5-IP

<b>Processor</b>	Pentium
<b>Processor Speed</b>	60/66MHz
<b>Chip Set</b>	Intel
<b>Max. Onboard DRAM</b>	192MB
<b>Cache</b>	256/512KB
<b>BIOS</b>	AMI
<b>Dimensions</b>	330mm x 218mm
<b>I/O Options</b>	32-bit PCI slots (3), PS/2 mouse connector
<b>NPU Options</b>	None



CONNECTIONS			
Purpose	Location	Purpose	Location
Speaker	CN1	PS/2 mouse connector	CN4
Power LED & keylock	CN2	32-bit PCI slots	PC1 - PC3
Reset switch	CN3		

Continued on next page. . .

**YOUNG MICRO SYSTEMS, INC.**  
**VEGA VI-P5-IP**

... continued from previous page

USER CONFIGURABLE SETTINGS		
Function	Jumper	Position
í CMOS memory normal operation	J2	Open
CMOS memory clear	J2	Closed
í Factory configured - do not alter	J5	Open
í Factory configured - do not alter	J6	Open
í Factory configured - do not alter	J7	Open
í CMOS recovery select normal	J10	pins 1 & 2 closed
CMOS recovery select recover	J10	pins 2 & 3 closed
í BIOS type select normal	J11	Open
BIOS type select flash	J11	Closed
í Factory configured - do not alter	J45	Open
í Factory configured - do not alter	J46	Open
í Factory configured - do not alter	J47	Open
í Factory configured - do not alter	J48	Closed
í Factory configured - do not alter	J49	Closed
í PCI trigger type select inverted	JQ14	pins 1 & 2 closed
PCI trigger type select standard	JQ14	pins 2 & 3 closed

DRAM CONFIGURATION			
Size	Bank 0	Bank 1	Bank 2
2MB	(2) 256K x 36	NONE	NONE
4MB	(2) 256K x 36	(2) 256K x 36	NONE
16MB	(2) 2M x 36	NONE	NONE
16MB	(2) 1M x 36	(2) 1M x 36	NONE
32MB	(2) 2M x 36	(2) 2M x 36	NONE
32MB	(2) 4M x 36	NONE	NONE
64MB	(2) 8M x 36	NONE	NONE
64MB	(2) 4M x 36	(2) 4M x 36	NONE
128MB	(2) 8M x 36	(2) 8M x 36	NONE
192MB	(2) 8M x 36	(2) 8M x 36	(2) 8M x 36

CACHE CONFIGURATION	
Size	Bank 0
256KB	(8) 32K x 8
512KB	(8) 64K x 8

CACHE JUMPER CONFIGURATION		
Size	J71	J72
256KB	pins 1 & 2 closed	pins 2 & 3 closed
512KB	pins 2 & 3 closed	pins 2 & 3 closed

CPU SPEED CONFIGURATION		
Speed	JP1	JP2
80386	pins 2 & 3 closed	pins 1 & 2 closed
80486	pins 1 & 2 closed	pins 2 & 3 closed

Continued on next page...

YOUNG MICRO SYSTEMS, INC.  
VEGA VI-P5-IP

... continued from previous page

PCI INTERRUPT CONFIGURATION	
Interrupt	J73
A	pins 1 & 2 closed
B	pins 3 & 4 closed
C	pins 5 & 6 closed
D	pins 7 & 8 closed

PCI CONFIGURATION				
Setting	JQ5	JQ9	JQ11	JQ15
Normal setting	pins 2 & 3 closed	pins 2 & 3 closed	pins 2 & 3 closed	pins 2 & 3 closed
IRQ to PCI slot	pins 1 & 2 closed	pins 1 & 2 closed	pins 1 & 2 closed	pins 1 & 2 closed
Note: Only one IRQ may be redirected.				