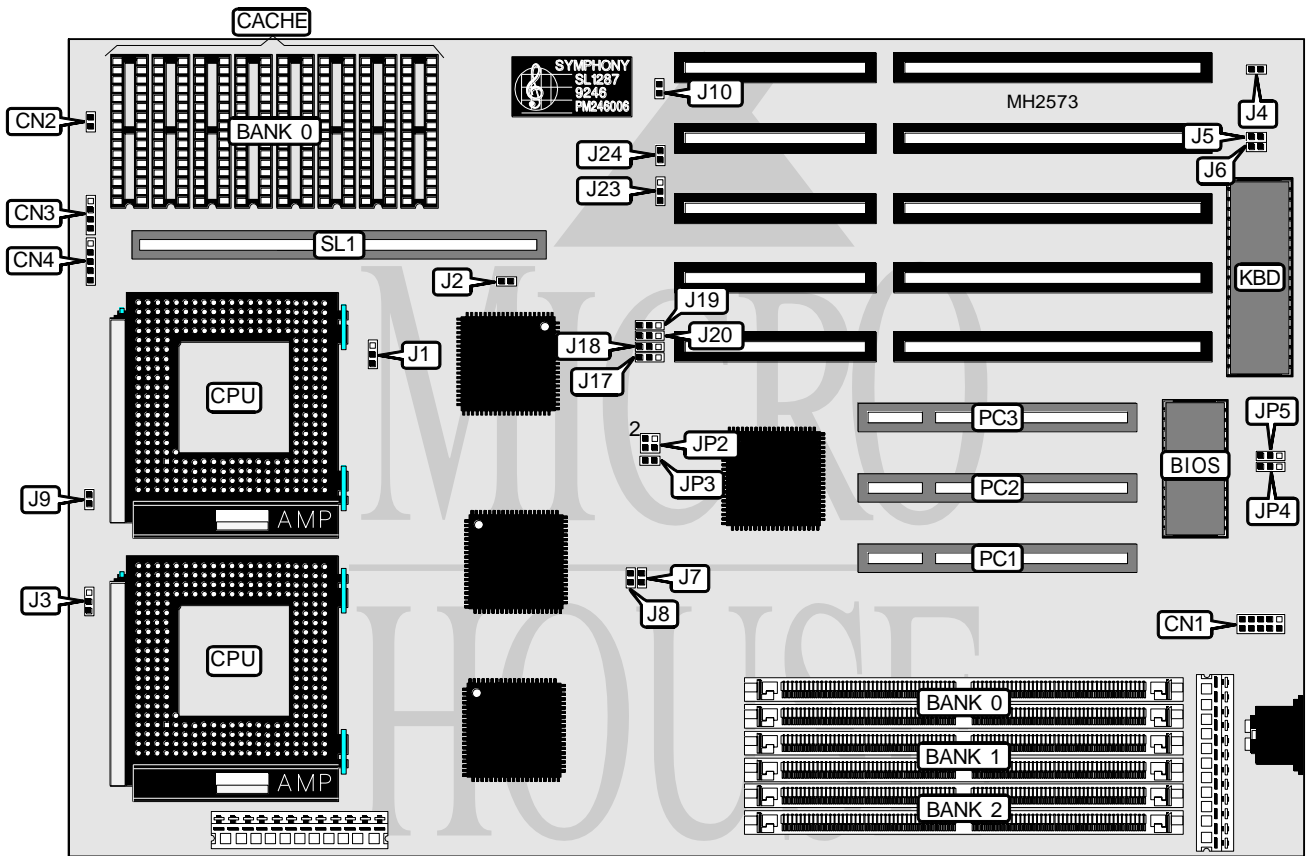


YOUNG MICRO SYSTEMS, INC.

VEGA P54C-IDP

Processor	Pentium
Processor Speed	90/100MHz
Chip Set	Intel
Max. Onboard DRAM	192MB
Cache	256/512KB
BIOS	AMI
Dimensions	330mm x 218mm
I/O Options	External cache card, 32-bit PCI slots (3), green PC connector, PS/2 mouse connector
NPU Options	None



CONNECTIONS			
Purpose	Location	Purpose	Location
PS/2 mouse connector	CN1	Green PC connector	J4
Reset switch	CN2	32-bit PCI slots	PC1 - PC3
Speaker	CN3	Synchronous cache slot	SL1
Power LED & keylock	CN4		

Continued on next page. . .

YOUNG MICRO SYSTEMS, INC.

VEGA P54C-IDP

... continued from previous page

USER CONFIGURABLE SETTINGS		
Function	Jumper	Position
í Chipset test mode disabled	J1	pins 2 & 3 closed
Chipset test mode enabled	J1	pins 1 & 2 closed
í Pipeline mode enabled	J2	Closed
Pipeline mode disabled	J2	Open
í Bus frequency select 2/3 bus speed	J3	pins 1 & 2 closed
Bus frequency select 1/2 bus speed	J3	pins 2 & 3 closed
í Password select normal	J4	Open
Password select clear	J4	Closed
í CMOS value select normal	J5	Open
CMOS value select clear	J5	Closed
í Monitor type select color	J6	Open
Monitor type select monochrome	J6	Closed
í Cache type select write back	J9	Open
Cache type select write through	J9	Closed
í CMOS memory normal operation	J10	Open
CMOS memory clear	J10	Closed
í PLL test mode select normal	J17	pins 2 & 3 closed
PLL test mode select test mode	J17	pins 1 & 2 closed
í Cache type select standard	J18	pins 1 & 2 closed
Cache type select burst	J18	pins 2 & 3 closed
í SIO select 378	J23	pins 2 & 3 closed
SIO select 379	J23	pins 1 & 2 closed
í External SMI select normal	J24	Open
External SMI select force SMI	J24	Closed
í Cache parity disabled	JP2	pins 1 & 2, 3 & 4 closed
Cache parity enabled	JP2	pins 1 & 3, 2 & 4 closed
í APIC select 378	JP3	Open
APIC select 379	JP3	Closed
í CMOS recovery select normal	JP4	pins 1 & 2 closed
CMOS recovery select recover	JP4	pins 2 & 3 closed
í BIOS type select normal	JP5	pins 1 & 2 closed
BIOS type select flash	JP5	pins 2 & 3 closed

DRAM CONFIGURATION			
Size	Bank 0	Bank 1	Bank 2
2MB	(2) 256K x 36	NONE	NONE
4MB	(2) 256K x 36	(2) 256K x 36	NONE
16MB	(2) 2M x 36	NONE	NONE
16MB	(2) 1M x 36	(2) 1M x 36	NONE
32MB	(2) 4M x 36	NONE	NONE
32MB	(2) 2M x 36	(2) 2M x 36	NONE
64MB	(2) 8M x 36	NONE	NONE
64MB	(2) 4M x 36	(2) 4M x 36	NONE
128MB	(2) 8M x 36	(2) 8M x 36	NONE
192MB	(2) 8M x 36	(2) 8M x 36	(2) 8M x 36

Continued on next page. . .

YOUNG MICRO SYSTEMS, INC.
VEGA P54C-IDP

... continued from previous page

CACHE CONFIGURATION	
Size	Bank 0
256KB	(8) 32K x 8
512KB	(8) 64K x 8

CACHE JUMPER CONFIGURATION		
Size	J19	J20
None installed	pins 1 & 2 closed	pins 1 & 2 closed
256KB	pins 1 & 2 closed	pins 2 & 3 closed
512KB	pins 2 & 3 closed	pins 2 & 3 closed

CPU SPEED CONFIGURATION		
Speed	J7	J8
90MHz	Closed	Closed
100MHz	Closed	Open