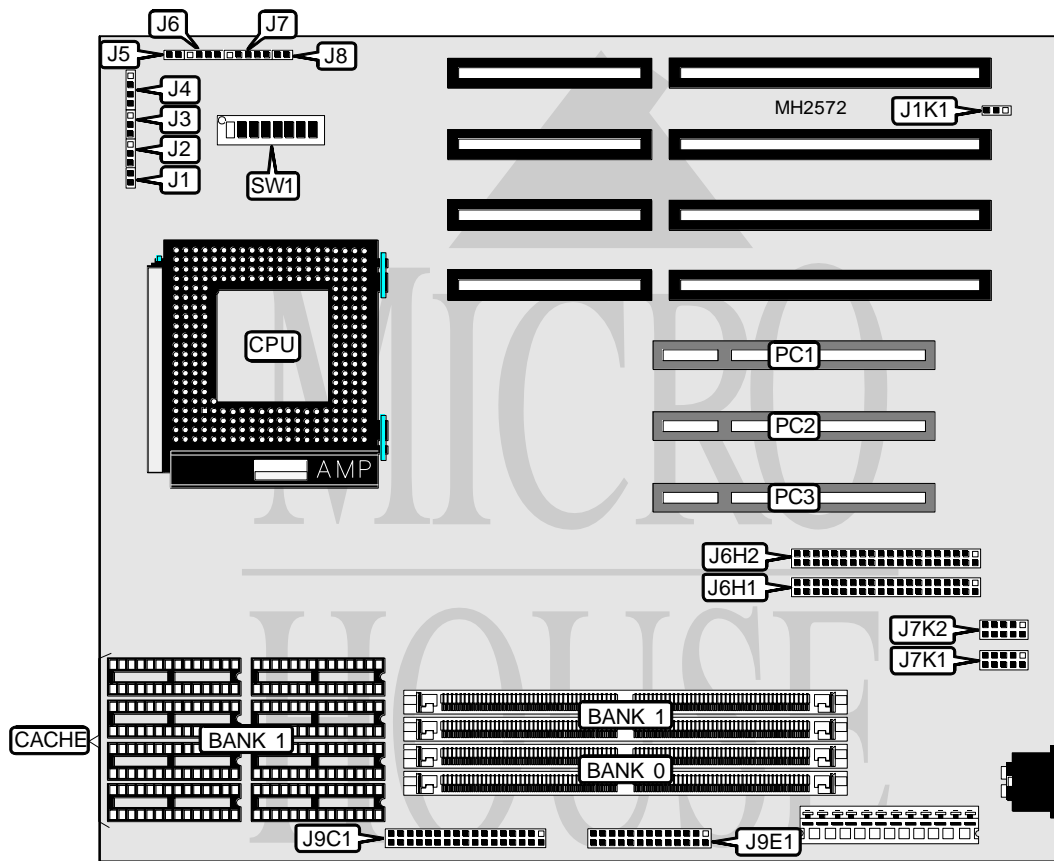


INTEL CORPORATION PTI-5 ADVANCED/ZP

Processor	Pentium
Processor Speed	50/60MHz
Chip Set	Intel
Max. Onboard DRAM	128MB
Cache	256KB
BIOS	AMI
Dimensions	254mm x 218mm
I/O Options	32-bit PCI slots (3), green PC connector, floppy drive interface, IDE interfaces (2), parallel port, serial ports (2)
NPU Options	None



CONNECTIONS			
Purpose	Location	Purpose	Location
Green PC connector	J1	IDE interface (primary)	J6H1
Infra red connector	J2	IDE interface (secondary)	J6H2
Chassis fan power	J3	Serial port 1	J7K1
Speaker	J4	Serial port 2	J7K2
Turbo LED	J5	Floppy drive interface	J9C1
IDE interface LED	J6	Parallel port	J9E1
Power LED & keylock	J7	32-bit PCI slots	PC1 - PC3
Reset switch	J8		

Continued on next page . . .

INTEL CORPORATION

PTI-5 ADVANCED/ZP

... continued from previous page

USER CONFIGURABLE SETTINGS		
Function	Jumper/Switch	Position
í Recovery boot enabled	J1K1	pins 1 & 2 closed
Recovery boot disabled	J1K1	pins 2 & 3 closed
í ISA bus speed select 1/3	SW1/1	Off
ISA bus speed select 1/4	SW1/1	On
í Processor voltage regulator select VR type processor	SW1/2	Off
Processor voltage regulator select VRE type processor	SW1/2	On
í Password normal operation	SW1/3	Off
Password clear	SW1/3	On
í CMOS memory normal operation	SW1/4	Off
CMOS memory clear	SW1/4	On
í Setup entry enabled	SW1/5	Off
Setup entry disabled	SW1/5	On
í Internal clock speed select 3/2x	SW1/6	Off
Internal clock speed select 2x	SW1/6	On

DRAM CONFIGURATION		
Size	Bank 0	Bank 1
8MB	NONE	(2) 1M x 36
8MB	(2) 1M x 36	NONE
16MB	NONE	(2) 2M x 36
16MB	(2) 1M x 36	(2) 1M x 36
16MB	(2) 2M x 36	NONE
24MB	(2) 1M x 36	(2) 2M x 36
24MB	(2) 2M x 36	(2) 1M x 36
32MB	NONE	(2) 4M x 36
32MB	(2) 2M x 36	(2) 2M x 36
32MB	(2) 4M x 36	NONE
40MB	(2) 1M x 36	(2) 4M x 36
40MB	(2) 4M x 36	(2) 1M x 36
48MB	(2) 2M x 36	(2) 4M x 36
48MB	(2) 4M x 36	(2) 2M x 36
64MB	NONE	(2) 8M x 36
64MB	(2) 4M x 36	(2) 4M x 36
64MB	(2) 8M x 36	NONE
72MB	(2) 1M x 36	(2) 8M x 36
72MB	(2) 8M x 36	(2) 1M x 36
80MB	(2) 2M x 36	(2) 8M x 36
80MB	(2) 8M x 36	(2) 2M x 36
96MB	(2) 4M x 36	(2) 8M x 36
96MB	(2) 8M x 36	(2) 4M x 36
128MB	(2) 8M x 36	(2) 8M x 36

CACHE CONFIGURATION	
Size	Bank 1
256KB	(8) 32K x 8

Continued on next page. . .

INTEL CORPORATION

PTI-5 ADVANCED/ZP

... continued from previous page

CPU SPEED CONFIGURATION		
Speed	SW1/7	SW1/8
50MHz	Off	Off
60MHz	On	Off