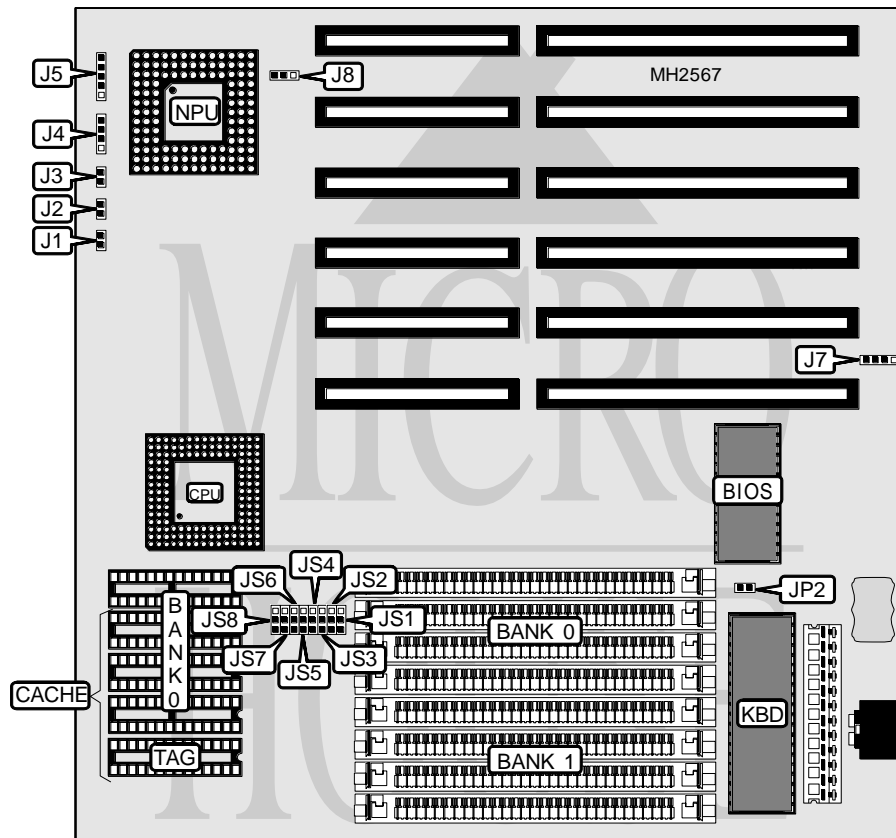


UNIDENTIFIED

386-SC-HG/HQ

Processor	80386DX
Processor Speed	25/33/40MHz
Chip Set	Symphony
Max. Onboard DRAM	32MB
Cache	32/128KB
BIOS	AMI
Dimensions	220mm x 220mm
I/O Options	None
NPU Options	80387DX/3167



CONNECTIONS			
Purpose	Location	Purpose	Location
Turbo LED	J1	Speaker	J4
Turbo switch	J2	Power LED & keylock	J5
Reset switch	J3	External battery	J7

Continued on next page. . .

UNIDENTIFIED

386-SC-HG/HQ

... continued from previous page

USER CONFIGURABLE SETTINGS

Function	Jumper	Position
í Monitor type select monochrome/EGA/VGA	JP2	Open
Monitor type select color	JP2	Closed
í NPU synchronous with CPU	J8	pins 1 & 2 closed
NPU asynchronous with CPU	J8	pins 2 & 3 closed

DRAM CONFIGURATION

Size	Bank 0	Bank 1
1MB	(4) 256K x 9	NONE
2MB	(4) 256K x 9	(4) 256K x 9
4MB	(4) 1M x 9	NONE
5MB	(4) 256K x 9	(4) 1M x 9
5MB	(4) 1M x 9	(4) 256K x 9
8MB	(4) 1M x 9	(4) 1M x 9
16MB	(4) 4M x 9	NONE
17MB	(4) 256K x 9	(4) 4M x 9
17MB	(4) 4M x 9	(4) 256K x 9
20MB	(4) 1M x 9	(4) 4M x 9
20MB	(4) 4M x 9	(4) 1M x 9
32MB	(4) 4M x 9	(4) 4M x 9

CACHE CONFIGURATION

Size	Bank 0	TAG
32KB	(4) 8K x 8	(1) 8K x 8
128KB	(4) 32K x 8	(1) 8K x 8

CACHE JUMPER CONFIGURATION

Size	JS1	JS2	JS3	JS4	JS5	JS6	JS7	JS8
32KB	1 & 2	1 & 2	1 & 2	1 & 2	1 & 2	1 & 2	1 & 2	1 & 2
128KB	2 & 3	2 & 3	2 & 3	2 & 3	2 & 3	2 & 3	2 & 3	2 & 3

Note: Pins designated should be in the closed position.