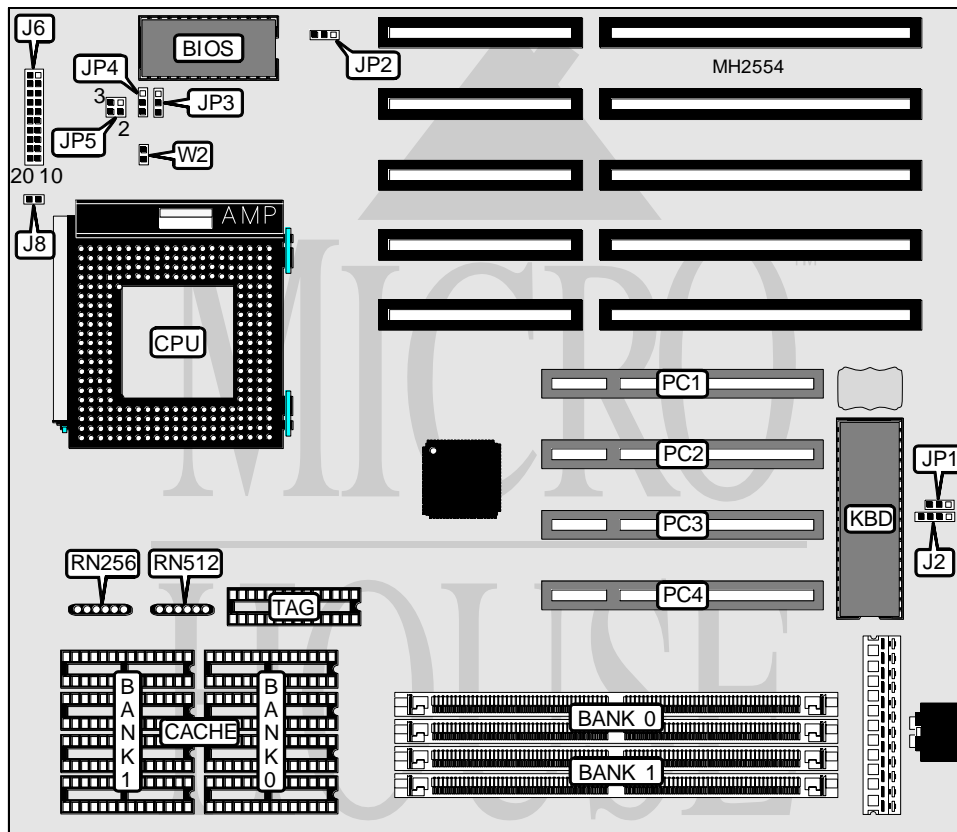


TMC RESEARCH CORPORATION PCI54AG (VER. 1.0)

Processor	Pentium
Processor Speed	75/90/100MHz
Chip Set	ALI
Max. Onboard DRAM	128MB
Cache	256/512KB
BIOS	AMI
Dimensions	254mm x 218mm
I/O Options	32-bit PCI slots (4), green PC connector
NPU Options	None



CONNECTIONS			
Purpose	Location	Purpose	Location
External battery	J2	Reset switch	J6 pins 9 & 19
Speaker	J6 pins 1 - 4	Power LED & keylock	J6 pins 11 - 15
Turbo switch	J6 pins 7 & 17	Green PC connector	J8
Turbo LED	J6 pins 8 & 18	32-bit PCI slots	PCI - PC4

Continued on next page. . .

TMC RESEARCH CORPORATION

PCI54AG (VER. 1.0)

... continued from previous page

USER CONFIGURABLE SETTINGS		
Function	Jumper	Position
í Battery type select internal	JP1	pins 2 & 3 closed
CMOS memory clear	JP1	pins 1 & 2 closed
Battery type select external	JP1	Open
í BIOS type select EPROM	JP2	pins 2 & 3 closed
BIOS type select flash	JP2	pins 1 & 2 closed
í Factory configured - do not alter	JP3	N/A
í Factory configured - do not alter	JP4	N/A
í ADS delay select delay ADS	W2	Closed
ADS delay select normal	W2	Open

DRAM CONFIGURATION		
Size	Bank 0	Bank 1
2MB	(2) 256K x 36	NONE
4MB	(2) 256K x 36	(2) 256K x 36
4MB	(2) 512K x 36	NONE
6MB	(2) 512K x 36	(2) 256K x 36
8MB	(2) 512K x 36	(2) 512K x 36
8MB	(2) 1M x 36	NONE
10MB	(2) 1M x 36	(2) 256K x 36
12MB	(2) 1M x 36	(2) 512K x 36
16MB	(2) 1M x 36	(2) 1M x 36
16MB	(2) 2M x 36	NONE
18MB	(2) 2M x 36	(2) 256K x 36
20MB	(2) 2M x 36	(2) 512K x 36
24MB	(2) 2M x 36	(2) 1M x 36
32MB	(2) 2M x 36	(2) 2M x 36
32MB	(2) 4M x 36	NONE
34MB	(2) 4M x 36	(2) 256K x 36
36MB	(2) 4M x 36	(2) 512K x 36
40MB	(2) 4M x 36	(2) 1M x 36
48MB	(2) 4M x 36	(2) 2M x 36
64MB	(2) 4M x 36	(2) 4M x 36
64MB	(2) 8M x 36	NONE
66MB	(2) 8M x 36	(2) 256K x 36
68MB	(2) 8M x 36	(2) 512K x 36
72MB	(2) 8M x 36	(2) 1M x 36
80MB	(2) 8M x 36	(2) 2M x 36
96MB	(2) 8M x 36	(2) 4M x 36
128MB	(2) 8M x 36	(2) 8M x 36

CACHE CONFIGURATION			
Size	Bank 0	Bank 1	TAG
256KB	(4) 32K x 8	(4) 32K x 8	(1) 8K x 8
512KB	(4) 64K x 8	(4) 64K x 8	(1) 32K x 8

Continued on next page. . .

TMC RESEARCH CORPORATION
PCI54AG (VER. 1.0)*... continued from previous page*

CACHE RESISTOR CONFIGURATION		
Size	RN256	RN512
256KB	Installed	Not installed
512KB	Not installed	Installed

CPU SPEED CONFIGURATION	
Speed	JP5
75MHz	Open
90MHz	pins 1 & 2 closed
100MHz	pins 1 & 2, 3 & 4 closed