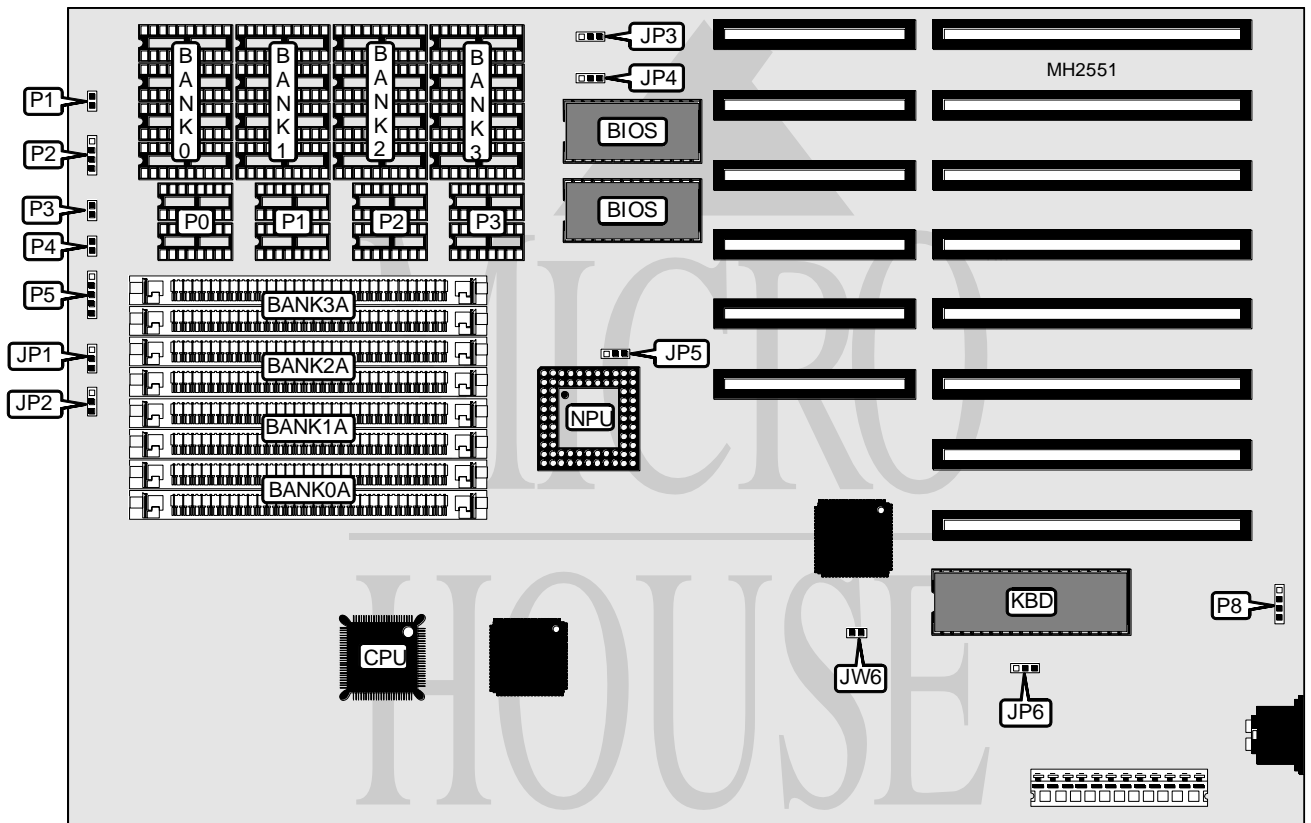


UNIDENTIFIED PANTHER 386SX

Processor	80386SX
Processor Speed	16/20MHz
Chip Set	Unidentified
Max. Onboard DRAM	32MB
Cache	None
BIOS	AMI
Dimensions	330mm x 218mm
I/O Options	None
NPU Options	80387SX



CONNECTIONS			
Purpose	Location	Purpose	Location
Reset switch	P1	Turbo LED	P4
Speaker	P2	Power LED & keylock	P5
Turbo switch	P3	External battery	P8

Continued on next page. . .

UNIDENTIFIED PANTHER 386SX

... continued from previous page

USER CONFIGURABLE SETTINGS		
Function	Jumper	Position
í Factory configured - do not alter	JP1	N/A
í Parity check enabled	JP2	pins 1 & 2 closed
Parity check disabled	JP2	pins 2 & 3 closed
í Factory configured - do not alter	JP5	N/A
í Monitor type select monochrome	JP6	pins 1 & 2 closed
Monitor type select CGA/EGA/VGA	JP6	pins 2 & 3 closed
í CMOS memory normal operation	JW6	Open
CMOS memory clear	JW6	Closed

DRAM CONFIGURATION (SIMM)				
Size	Bank 0	Bank 1	Bank 2	Bank 3
2MB	(2) 1M x 9	NONE	NONE	NONE
3MB	(2) 256K x 9	(2) 256K x 9	(2) 1M x 9	NONE
4MB	(2) 1M x 9	(2) 1M x 9	NONE	NONE
4.5MB	(2) 1M x 9	(2) 1M x 9	(2) 256K x 9	NONE
5MB	(2) 256K x 9	(2) 256K x 9	(2) 1M x 9	(2) 1M x 9
6MB	(2) 1M x 9	(2) 1M x 9	(2) 1M x 9	NONE
8MB	(2) 1M x 9	(2) 1M x 9	(2) 1M x 9	(2) 1M x 9
8MB	(2) 4M x 9	NONE	NONE	NONE
9MB	(2) 256K x 9	(2) 256K x 9	(2) 4M x 9	NONE
10MB	(2) 1M x 9	(2) 4M x 9	NONE	NONE
12MB	(2) 1M x 9	(2) 1M x 9	(2) 4M x 9	NONE
16MB	(2) 4M x 9	(2) 4M x 9	NONE	NONE
16.5MB	(2) 4M x 9	(2) 4M x 9	(2) 256K x 9	NONE
17MB	(2) 256K x 9	(2) 256K x 9	(2) 4M x 9	(2) 4M x 9
18MB	(2) 4M x 9	(2) 4M x 9	(2) 1M x 9	NONE
20MB	(2) 1M x 9	(2) 1M x 9	(2) 4M x 9	(2) 4M x 9
24MB	(2) 4M x 9	(2) 4M x 9	(2) 4M x 9	NONE
32MB	(2) 4M x 9	(2) 4M x 9	(2) 4M x 9	(2) 4M x 9

DRAM CONFIGURATION (DIP)				
Size	Bank 0	Bank 1	Bank 2	Bank 3
512KB	(4) 44256	NONE	NONE	NONE
1MB	(4) 44256	(4) 44256	NONE	NONE
1.5MB	(4) 44256	(4) 44256	(4) 44256	NONE
2MB	(4) 44256	(4) 44256	(4) 44256	(4) 44256

DRAM PARITY CONFIGURATION (DIP)				
Size	Parity 0	Parity 1	Parity 2	Parity 3
512KB	(2) 41256	NONE	NONE	NONE
1MB	(2) 41256	(2) 41256	NONE	NONE
1.5MB	(2) 41256	(2) 41256	(2) 41256	NONE
2MB	(2) 41256	(2) 41256	(2) 41256	(2) 41256

Continued on next page...

**UNIDENTIFIED
PANTHER 386SX***... continued from previous page*

BIOS CONFIGURATION		
Size	JP3	JP4
27128	pins 1 & 2 closed	pins 1 & 2 closed
í 27256	pins 2 & 3 closed	pins 1 & 2 closed
27512	pins 2 & 3 closed	pins 2 & 3 closed