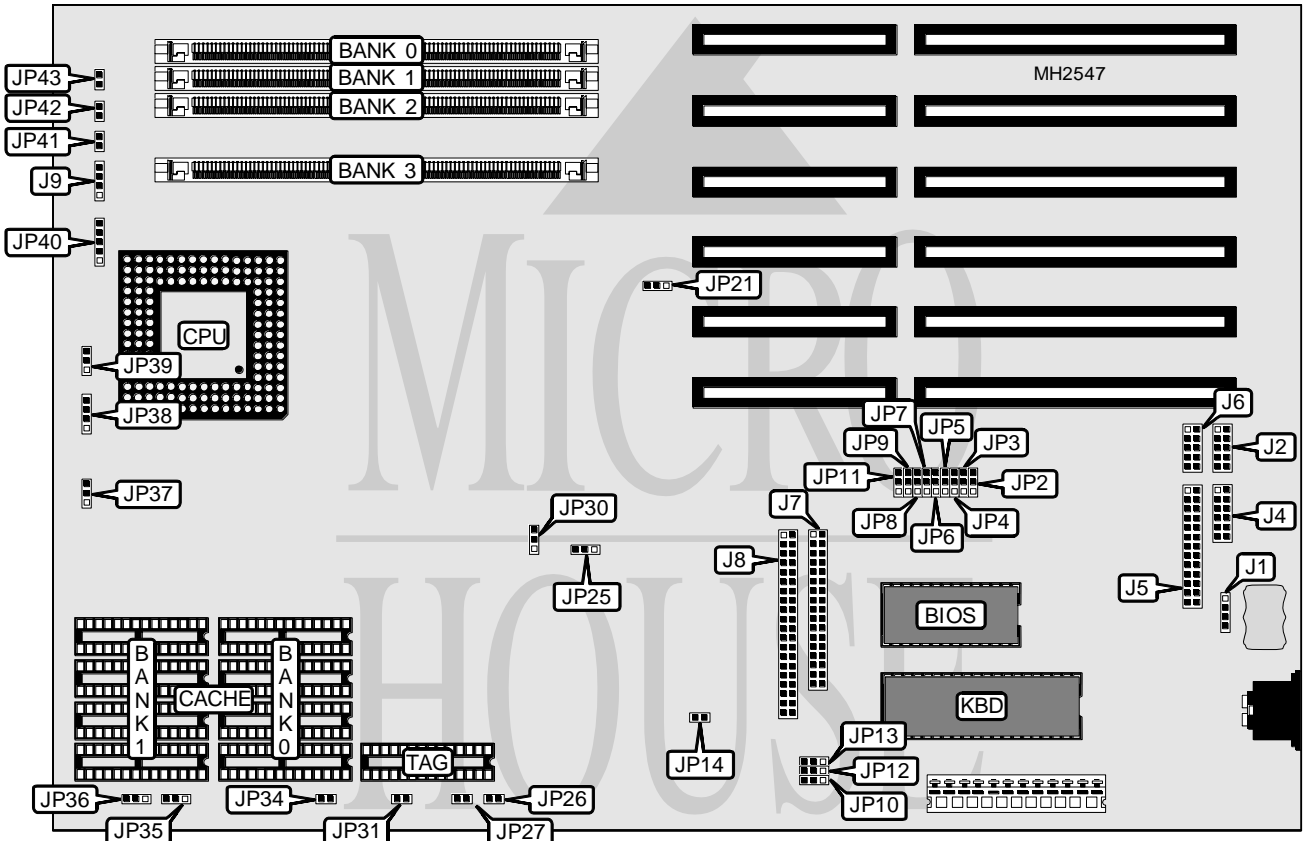


# UNIDENTIFIED

## UC 4915-C A10

<b>Processor</b>	80486SX/CX487SX/80486DX/80486DX2/P23N/P23T/Pentium Overdrive
<b>Processor Speed</b>	25/33/40/50(internal)/50/66(internal)MHz
<b>Chip Set</b>	UMC
<b>Max. Onboard DRAM</b>	64MB
<b>Cache</b>	64/128/256KB
<b>BIOS</b>	AMI
<b>Dimensions</b>	330mm x 218mm
<b>I/O Options</b>	Floppy drive interface, game port, IDE interface, parallel port, serial ports (2)
<b>NPU Options</b>	None



CONNECTIONS			
Purpose	Location	Purpose	Location
External battery	J1	Speaker	J9
Serial port 1	J2	IDE interface LED	JP14
Game port	J4	Power LED & keylock	JP40
Parallel port	J5	Reset switch	JP41
Serial port 2	J6	Turbo switch	JP42
Floppy drive interface	J7	Turbo LED	JP43
IDE interface	J8		

Continued on next page. . .

# UNIDENTIFIED

## UC 4915 - C AIO

... continued from previous page

USER CONFIGURABLE SETTINGS		
Function	Jumper	Position
í BIOS type select EPROM	JP2	pins 1 & 2 closed
BIOS type select flash BIOS	JP2	pins 2 & 3 closed
í Floppy drive interface enabled	JP3	pins 1 & 2 closed
Floppy drive interface disabled	JP3	pins 2 & 3 closed
í Parallel port enabled	JP4	pins 1 & 2 closed
Parallel port disabled	JP4	pins 2 & 3 closed
í COM2/4 enabled	JP5	pins 1 & 2 closed
COM2/4 disabled	JP5	pins 2 & 3 closed
í COM2 enabled	JP6	pins 1 & 2 closed
COM4 enabled	JP6	pins 2 & 3 closed
í COM1 enabled	JP7	pins 1 & 2 closed
COM3 enabled	JP7	pins 2 & 3 closed
í COM1/3 enabled	JP8	pins 1 & 2 closed
COM1/3 disabled	JP8	pins 2 & 3 closed
í Printer I/O port select LPT2	JP9	pins 1 & 2 closed
Printer I/O port select LPT3	JP9	pins 2 & 3 closed
í Monitor type select monochrome	JP10	pins 1 & 2 closed
Monitor type select color	JP10	pins 2 & 3 closed
í Game port enabled	JP11	pins 1 & 2 closed
Game port disabled-	JP11	pins 2 & 3 closed
í Hard drive installed	JP12	pins 2 & 3 closed
Hard drive not installed	JP12	pins 1 & 2 closed
í IDE interface enabled	JP13	pins 1 & 2 closed
IDE interface disabled	JP13	pins 2 & 3 closed
í Weitek VGA card not installed	JP30	pins 1 & 2 closed
Weitek VGA card installed	JP30	pins 2 & 3 closed

DRAM CONFIGURATION				
Size	Bank 0	Bank 1	Bank 2	Bank 3
1MB	(1) 256K x 36	NONE	NONE	NONE
2MB	(1) 512K x 36	NONE	NONE	NONE
2MB	(1) 256K x 36	(1) 256K x 36	NONE	NONE
3MB	(1) 512K x 36	NONE	(1) 256K x 36	NONE
3MB	(1) 256K x 36	(1) 256K x 36	(1) 256K x 36	NONE
4MB	(1) 512K x 36	NONE	(1) 256K x 36	(1) 256K x 36
4MB	(1) 512K x 36	NONE	(1) 512K x 36	NONE
4MB	(1) 256K x 36	(1) 256K x 36	(1) 256K x 36	(1) 256K x 36
4MB	(1) 1M x 36	NONE	NONE	NONE
5MB	(1) 1M x 36	(1) 256K x 36	NONE	NONE
6MB	(1) 512K x 36	NONE	(1) 1M x 36	NONE
6MB	(1) 1M x 36	(1) 256K x 36	(1) 256K x 36	NONE
7MB	(1) 512K x 36	NONE	(1) 1M x 36	(1) 256K x 36
7MB	(1) 1M x 36	(1) 256K x 36	(1) 256K x 36	(1) 256K x 36

Continued on next page. . .

# UNIDENTIFIED

## UC 4915-C AIO

... continued from previous page

DRAM CONFIGURATION (CON'T)				
Size	Bank 0	Bank 1	Bank 2	Bank 3
8MB	(1) 2M x 36	NONE	NONE	NONE
8MB	(1) 1M x 36	(1) 1M x 36	NONE	NONE
9MB	(1) 2M x 36	NONE	(1) 256K x 36	NONE
9MB	(1) 1M x 36	(1) 1M x 36	(1) 256K x 36	NONE
10MB	(1) 512K x 36	NONE	(1) 2M x 36	NONE
10MB	(1) 2M x 36	NONE	(1) 256K x 36	(1) 256K x 36
10MB	(1) 2M x 36	NONE	(1) 512K x 36	NONE
10MB	(1) 1M x 36	(1) 1M x 36	(1) 256K x 36	(1) 256K x 36
12MB	(1) 2M x 36	NONE	(1) 1M x 36	NONE
12MB	(1) 1M x 36	(1) 1M x 36	(1) 1M x 36	NONE
13MB	(1) 2M x 36	NONE	(1) 1M x 36	(1) 256K x 36
13MB	(1) 1M x 36	(1) 1M x 36	(1) 1M x 36	(1) 256K x 36
16MB	(1) 2M x 36	NONE	(1) 1M x 36	(1) 1M x 36
16MB	(1) 2M x 36	NONE	(1) 2M x 36	NONE
16MB	(1) 1M x 36	(1) 1M x 36	(1) 1M x 36	(1) 1M x 36
16MB	(1) 4M x 36	NONE	NONE	NONE
17MB	(1) 4M x 36	(1) 256K x 36	NONE	NONE
18MB	(1) 512K x 36	NONE	(1) 4M x 36	NONE
18MB	(1) 4M x 36	(1) 256K x 36	(1) 256K x 36	NONE
19MB	(1) 512K x 36	NONE	(1) 4M x 36	(1) 256K x 36
19MB	(1) 4M x 36	(1) 256K x 36	(1) 256K x 36	(1) 256K x 36
20MB	(1) 4M x 36	(1) 1M x 36	NONE	NONE
21MB	(1) 4M x 36	(1) 1M x 36	(1) 256K x 36	NONE
22MB	(1) 512K x 36	NONE	(1) 4M x 36	(1) 1M x 36
22MB	(1) 4M x 36	(1) 1M x 36	(1) 256K x 36	(1) 256K x 36
24MB	(1) 2M x 36	NONE	(1) 4M x 36	NONE
24MB	(1) 4M x 36	(1) 1M x 36	(1) 1M x 36	NONE
25MB	(1) 2M x 36	NONE	(1) 4M x 36	(1) 256K x 36
25MB	(1) 4M x 36	(1) 1M x 36	(1) 1M x 36	(1) 256K x 36
28MB	(1) 2M x 36	NONE	(1) 4M x 36	(1) 1M x 36
28MB	(1) 4M x 36	(1) 1M x 36	(1) 1M x 36	(1) 1M x 36
32MB	(1) 4M x 36	(1) 4M x 36	NONE	NONE
33MB	(1) 4M x 36	(1) 4M x 36	(1) 256K x 36	NONE
34MB	(1) 4M x 36	(1) 4M x 36	(1) 256K x 36	(1) 256K x 36
36MB	(1) 512K x 36	NONE	(1) 4M x 36	(1) 4M x 36
36MB	(1) 4M x 36	(1) 4M x 36	(1) 1M x 36	NONE
37MB	(1) 4M x 36	(1) 4M x 36	(1) 1M x 36	(1) 256K x 36
40MB	(1) 2M x 36	NONE	(1) 4M x 36	(1) 4M x 36
40MB	(1) 4M x 36	(1) 4M x 36	(1) 1M x 36	(1) 1M x 36
48MB	(1) 4M x 36	(1) 4M x 36	(1) 4M x 36	NONE
49MB	(1) 4M x 36	(1) 4M x 36	(1) 4M x 36	(1) 256K x 36
52MB	(1) 4M x 36	(1) 4M x 36	(1) 4M x 36	(1) 1M x 36
64MB	(1) 4M x 36	(1) 4M x 36	(1) 4M x 36	(1) 4M x 36

Continued on next page...

# UNIDENTIFIED

## UC 4915-C AIO

... continued from previous page

CACHE CONFIGURATION			
Size	Bank 0	Bank 1	TAG
64KB	(4) 8K x 8	(4) 8K x 8	(1) 8K x 8
128KB	(4) 32K x 8	NONE	(1) 8K x 8
256KB	(4) 32K x 8	(4) 32K x 8	(1) 32K x 8

CACHE JUMPER CONFIGURATION				
Size	JP31	JP34	JP35	JP36
64KB	Open	Open	Open	pins 1 & 2 closed
128KB	Open	Closed	pins 2 & 3 closed	pins 2 & 3 closed
256KB	Closed	Closed	pins 1 & 2 closed	pins 1 & 2 closed

CPU TYPE CONFIGURATION		
Type	JP38	JP39
80486SX	pins 2 & 3 closed	Open
80486DX	pins 1 & 2, 3 & 4 closed	pins 2 & 3 closed
80486DX2	pins 1 & 2, 3 & 4 closed	pins 2 & 3 closed
P23N	pins 1 & 2, 3 & 4 closed	pins 1 & 2 closed
P23T	pins 1 & 2, 3 & 4 closed	pins 1 & 2 closed
Pentium Overdrive	pins 1 & 2, 3 & 4 closed	pins 2 & 3 closed

CPU TYPE CONFIGURATION (CX487SX)			
Type	JP21	JP25	JP37
Installed	pins 1 & 2 closed	pins 1 & 2 closed	pins 1 & 2 closed
Not installed	pins 2 & 3 closed	pins 2 & 3 closed	pins 2 & 3 closed

CPU SPEED CONFIGURATION		
Speed	JP26	JP27
25MHz	Closed	Closed
33MHz	Open	Closed
40MHz	Closed	Open
50iMHz	Closed	Closed
50MHz	Open	Open
66iMHz	Open	Closed