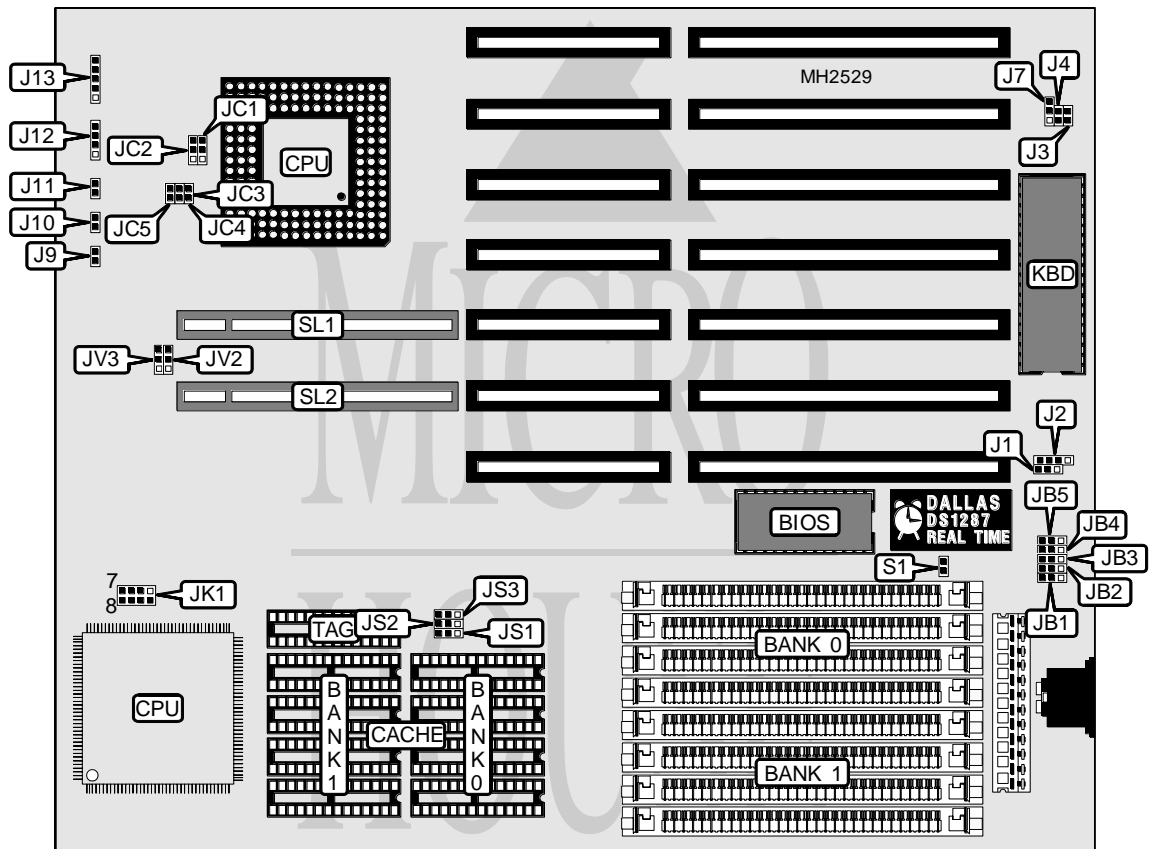


# ATEN RESEARCH, INC.

## 486-KVD

<b>Processor</b>	80486SX/80487SX/80486DX/80486DX2/Pentium Overdrive
<b>Processor Speed</b>	25/33/40/50(internal)/50/66(internal)MHz
<b>Chip Set</b>	VIA
<b>Max. Onboard DRAM</b>	128MB
<b>Cache</b>	64/128/256KB
<b>BIOS</b>	Award
<b>Dimensions</b>	254mm x 220mm
<b>I/O Options</b>	32-bit VESA local bus slots (2)
<b>NPU Options</b>	None



CONNECTIONS			
Purpose	Location	Purpose	Location
External battery	J2	Speaker	J12
Turbo LED	J9	Power LED & keylock	J13
Turbo switch	J10	32-bit VESA local bus slots	SL1 & SL2
Reset switch	J11		

Continued on next page. . .

**ATEN RESEARCH, INC.**  
**486 - K V D**

... continued from previous page

USER CONFIGURABLE SETTINGS		
Function	Jumper	Position
í Battery type select internal	J1	pins 2 & 3 closed
Battery type select external	J1	pins 1 & 2 closed
í Monitor type select monochrome/EGA/VGA	J4	Open
Monitor type select color	J4	Closed
í Password clear Award	J7	pins 1 & 2 closed
Password clear AMI	J7	pins 2 & 3 closed
í Factory configured - do not alter	JC5	N/A
í CMOS memory normal operation	S1	Open
CMOS memory clear	S1	Closed

DRAM CONFIGURATION		
Size	Bank 0	Bank 1
1MB	(4) 256K x 9	NONE
2MB	(4) 256K x 9	(4) 256K x 9
4MB	(4) 1M x 9	NONE
5MB	(4) 1M x 9	(4) 256K x 9
5MB	(4) 256K x 9	(4) 1M x 9
8MB	(4) 1M x 9	(4) 1M x 9
16MB	(4) 4M x 9	NONE
17MB	(4) 4M x 9	(4) 256K x 9
17MB	(4) 256K x 9	(4) 4M x 9
20MB	(4) 4M x 9	(4) 1M x 9
20MB	(4) 1M x 9	(4) 4M x 9
32MB	(4) 4M x 9	(4) 4M x 9
64MB	(4) 16M x 9	NONE
65MB	(4) 16M x 9	(4) 256K x 9
65MB	(4) 256K x 9	(4) 16M x 9
68MB	(4) 16M x 9	(4) 1M x 9
68MB	(4) 1M x 9	(4) 16M x 9
80MB	(4) 16M x 9	(4) 4M x 9
80MB	(4) 4M x 9	(4) 16M x 9
128MB	(4) 16M x 9	(4) 16M x 9

CACHE CONFIGURATION			
Size	Bank 0	Bank 1	TAG
64KB	(4) 8K x 8	(4) 8K x 8	(1) 8K x 8
128KB	(4) 32K x 8	NONE	(1) 8K x 8
256KB	(4) 32K x 8	(4) 32K x 8	(1) 32K x 8

CACHE JUMPER CONFIGURATION			
Size	JS1	JS2	JS3
64KB	pins 1 & 2 closed	pins 1 & 2 closed	pins 1 & 2 closed
128KB	pins 1 & 2 closed	pins 2 & 3 closed	pins 2 & 3 closed
256KB	pins 2 & 3 closed	pins 2 & 3 closed	pins 1 & 2 closed

Continued on next page. . .

# ATEN RESEARCH, INC.

## 486 - K V D

... continued from previous page

CPU TYPE CONFIGURATION				
Type	JC1	JC2	JC3	JC4
80486SX	pins 2 & 3 closed	pins 2 & 3 closed	Open	Open
80486DX	pins 1 & 2 closed	pins 1 & 2 closed	Closed	Closed

CPU CLOCK SPEED CONFIGURATION	
Speed	JK1
25MHz	pins 5 & 6 closed
33MHz	pins 1 & 2 closed
40MHz	pins 1 & 2, 5 & 6, 7 & 8 closed
40MHz	pins 1 & 2, 3 & 4 closed
50iMHz	pins 5 & 6, 7 & 8 closed
50MHz	pins 3 & 4 closed
66MHz	pins 3 & 4, 7 & 8 closed
66iMHz	pins 1 & 2, 7 & 8 closed
80MHz	pins 1 & 2, 3 & 4, 7 & 8 closed
Power down	Open

VESA WAIT STATE CONFIGURATION	
Wait states	JV3
0 wait states	pins 2 & 3 closed
1 wait state	pins 1 & 2 closed

BUS SPEED CONFIGURATION	
CPU speed	JV2
<= 33MHz	pins 2 & 3 closed
> 33MHz	pins 1 & 2 closed

KEYBOARD CONFIGURATION						
Setting	J3	JB1	JB2	JB3	JB4	JB5
Internal	Open	2 & 3	2 & 3	2 & 3	2 & 3	2 & 3
External	Closed	1 & 2	1 & 2	1 & 2	1 & 2	1 & 2

Note: Pins designated should be in the closed position.