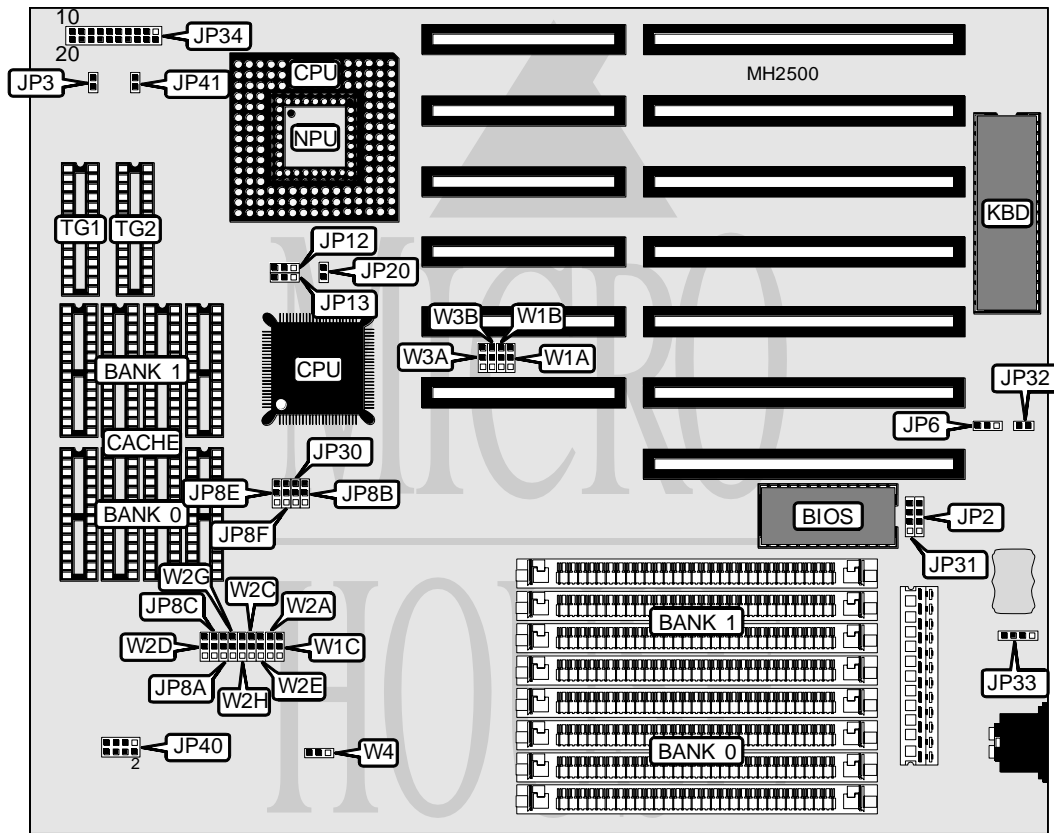


MECER CORPORATION B 800/B 820 (REV. A)

Processor	80386DX/CX486DLC/80486SX/80487SX/80486DX/80486DX2
Processor Speed	20/25/33/40/50(internal)/50/66(internal)MHz
Chip Set	Unidentified
Max. Onboard DRAM	32MB
Cache	64/128/256KB
BIOS	AMI
Dimensions	330mm x 218mm
I/O Options	None
NPU Options	80387DX



CONNECTIONS			
Purpose	Location	Purpose	Location
External battery	JP2	Speaker	JP34 pins 6 - 10
External battery	JP31	Turbo LED	JP34 pins 11 - 15
Auxiliary keyboard connector	JP33	Turbo switch	JP34 pins 16 - 17
Power LED & keylock	JP34 pins 1 - 5	Reset switch	JP34 pins 19 - 20

Continued on next page. . .

MECER CORPORATION

B800/B820 (REV. A)

... continued from previous page

USER CONFIGURABLE SETTINGS		
Function	Jumper	Position
1 Monitor type select color	JP3	Open
Monitor type select monochrome	JP3	Closed
1 CMOS memory normal operation	JP6	pins 1 & 2 closed
CMOS memory clear	JP6	pins 2 & 3 closed
1 Factory configured - do not alter	JP20	N/A
1 Internal battery enabled	JP32	Closed
Internal battery disabled	JP32	Open
1 Factory configured - do not alter	JP41	N/A

DRAM CONFIGURATION		
Size	Bank 0	Bank 1
1MB	(4) 256K x 9	NONE
2MB	(4) 256K x 9	(4) 256K x 9
4MB	(4) 1M x 9	NONE
5MB	(4) 256K x 9	(4) 1M x 9
8MB	(4) 1M x 9	(4) 1M x 9
16MB	(4) 4M x 9	NONE
20MB	(4) 1M x 9	(4) 1M x 9
32MB	(4) 4M x 9	(4) 4M x 9

CACHE CONFIGURATION				
Size	Bank 0	Bank 1	TG1	TG2
64KB	(4) 8K x 8	(4) 8K x 8	(1) 8K x 8	NONE
128KB	(4) 32K x 8	NONE	(1) 8K x 8	NONE
256KB	(4) 32K x 8	(4) 32K x 8	(1) 8K x 8	(1) 8K x 8

CACHE JUMPER CONFIGURATION (80386DX-40)							
Size	JP8A	JP8B	JP8C	JP8E	JP8F	JP12	JP13
64KB	2 & 3	1 & 2	1 & 2	2 & 3	1 & 2	1 & 2	1 & 2
128KB	1 & 2	2 & 3	2 & 3	1 & 2	1 & 2	1 & 2	1 & 2
256KB	2 & 3	1 & 2	1 & 2	1 & 2	2 & 3	1 & 2	1 & 2

Note: Pins designated should be in the closed position.

CACHE JUMPER CONFIGURATION (80386DX-40 CON'T)							
Size	JP30	JP40	W1A	W1B	W1C	W2A	W2C
64KB	1 & 2	1 & 2, 7 & 8	2 & 3	2 & 3	2 & 3	2 & 3	2 & 3
128KB	1 & 2	1 & 2, 7 & 8	2 & 3	2 & 3	2 & 3	2 & 3	2 & 3
256KB	1 & 2	1 & 2, 7 & 8	2 & 3	2 & 3	2 & 3	2 & 3	2 & 3

Note: Pins designated should be in the closed position.

Continued on next page. . .

MECER CORPORATION

B800/B820 (REV. A)

... continued from previous page

CACHE JUMPER CONFIGURATION (80386DX-40 CON'T)							
Size	W2D	W2E	W2G	W2H	W3A	W3B	W4
64KB	2 & 3	2 & 3	2 & 3	2 & 3	1 & 2	2 & 3	1 & 2
128KB	2 & 3	2 & 3	2 & 3	2 & 3	1 & 2	2 & 3	1 & 2
256KB	2 & 3	2 & 3	2 & 3	2 & 3	1 & 2	2 & 3	1 & 2

Note: Pins designated should be in the closed position.

CACHE JUMPER CONFIGURATION (CX486DLC-33)							
Size	JP8A	JP8B	JP8C	JP8E	JP8F	JP12	JP13
64KB	2 & 3	1 & 2	1 & 2	2 & 3	1 & 2	1 & 2	1 & 2
128KB	1 & 2	2 & 3	2 & 3	1 & 2	1 & 2	1 & 2	1 & 2
256KB	2 & 3	2 & 3	1 & 2	1 & 2	2 & 3	1 & 2	1 & 2

Note: Pins designated should be in the closed position.

CACHE JUMPER CONFIGURATION (CX486DLC-33 CON'T)							
Size	JP30	JP40	W1A	W1B	W1C	W2A	W2C
64KB	1 & 2	1 & 2, 5 & 6	2 & 3	1 & 2	2 & 3	2 & 3	2 & 3
128KB	1 & 2	1 & 2, 5 & 6	2 & 3	1 & 2	2 & 3	2 & 3	2 & 3
256KB	1 & 2	1 & 2, 5 & 6	2 & 3	1 & 2	2 & 3	2 & 3	2 & 3

Note: Pins designated should be in the closed position.

CACHE JUMPER CONFIGURATION (CX486DLC-33 CON'T)							
Size	W2D	W2E	W2G	W2H	W3A	W3B	W4
64KB	2 & 3	2 & 3	2 & 3	2 & 3	1 & 2	1 & 2	2 & 3
128KB	2 & 3	2 & 3	2 & 3	2 & 3	1 & 2	1 & 2	2 & 3
256KB	2 & 3	2 & 3	2 & 3	2 & 3	1 & 2	1 & 2	2 & 3

Note: Pins designated should be in the closed position.

CACHE JUMPER CONFIGURATION (80486SX-20)								
Size	JP8A	JP8B	JP8C	JP8E	JP8F	JP12	JP13	JP30
64KB	2 & 3	1 & 2	1 & 2	2 & 3	1 & 2	2 & 3	2 & 3	2 & 3
128KB	1 & 2	2 & 3	2 & 3	1 & 2	1 & 2	2 & 3	2 & 3	2 & 3
256KB	2 & 3	1 & 2	1 & 2	1 & 2	2 & 3	2 & 3	2 & 3	2 & 3

Note: Pins designated should be in the closed position.

CACHE JUMPER CONFIGURATION (80486SX-20 CON'T)						
Size	JP40	W1A	W1B	W1C	W2A	
64KB	1 & 2, 3 & 4, 5 & 6, 7 & 8	1 & 2	1 & 2	1 & 2	1 & 2	
128KB	1 & 2, 3 & 4, 5 & 6, 7 & 8	1 & 2	1 & 2	1 & 2	1 & 2	
256KB	1 & 2, 3 & 4, 5 & 6, 7 & 8	1 & 2	1 & 2	1 & 2	1 & 2	

Note: Pins designated should be in the closed position.

Continued on next page. . .

MECER CORPORATION

B800/B820 (REV. A)

... continued from previous page

CACHE JUMPER CONFIGURATION (80486SX-20 CON'T)								
Size	W2C	W2D	W2E	W2G	W2H	W3A	W3B	W4
64KB	1 & 2	1 & 2	1 & 2	1 & 2	1 & 2	2 & 3	1 & 2	1 & 2
128KB	1 & 2	1 & 2	1 & 2	1 & 2	1 & 2	2 & 3	1 & 2	1 & 2
256KB	1 & 2	1 & 2	1 & 2	1 & 2	1 & 2	2 & 3	1 & 2	1 & 2

Note: Pins designated should be in the closed position.

CACHE JUMPER CONFIGURATION (80486SX-25)							
Size	JP8A	JP8B	JP8C	JP8E	JP8F	JP12	JP13
64KB	2 & 3	1 & 2	1 & 2	2 & 3	1 & 2	2 & 3	2 & 3
128KB	1 & 2	2 & 3	2 & 3	1 & 2	1 & 2	2 & 3	2 & 3
256KB	2 & 3	1 & 2	1 & 2	1 & 2	2 & 3	2 & 3	2 & 3

Note: Pins designated should be in the closed position.

CACHE JUMPER CONFIGURATION (80486SX-25 CON'T)							
Size	JP30	JP40	W1A	W1B	W1C	W2A	W2C
64KB	2 & 3	1 & 2	1 & 2	1 & 2	1 & 2	1 & 2	1 & 2
128KB	2 & 3	1 & 2	1 & 2	1 & 2	1 & 2	1 & 2	1 & 2
256KB	2 & 3	1 & 2	1 & 2	1 & 2	1 & 2	1 & 2	1 & 2

Note: Pins designated should be in the closed position.

CACHE JUMPER CONFIGURATION (80486SX-25 CON'T)							
Size	W2D	W2E	W2G	W2H	W3A	W3B	W4
64KB	1 & 2	1 & 2	1 & 2	1 & 2	2 & 3	1 & 2	1 & 2
128KB	1 & 2	1 & 2	1 & 2	1 & 2	2 & 3	1 & 2	1 & 2
256KB	1 & 2	1 & 2	1 & 2	1 & 2	2 & 3	1 & 2	1 & 2

Note: Pins designated should be in the closed position.

CACHE JUMPER CONFIGURATION (80487SX-20)								
Size	JP8A	JP8B	JP8C	JP8E	JP8F	JP12	JP13	JP30
64KB	2 & 3	1 & 2	1 & 2	2 & 3	1 & 2	1 & 2	1 & 2	2 & 3
128KB	1 & 2	2 & 3	2 & 3	1 & 2	1 & 2	1 & 2	1 & 2	2 & 3
256KB	2 & 3	1 & 2	1 & 2	1 & 2	2 & 3	1 & 2	1 & 2	2 & 3

Note: Pins designated should be in the closed position.

CACHE JUMPER CONFIGURATION (80487SX-20 CON'T)						
Size	JP40	W1A	W1B	W1C	W2A	
64KB	1 & 2, 3 & 4, 5 & 6, 7 & 8	1 & 2	1 & 2	1 & 2	1 & 2	
128KB	1 & 2, 3 & 4, 5 & 6, 7 & 8	1 & 2	1 & 2	1 & 2	1 & 2	
256KB	1 & 2, 3 & 4, 5 & 6, 7 & 8	1 & 2	1 & 2	1 & 2	1 & 2	

Note: Pins designated should be in the closed position.

Continued on next page...

MECER CORPORATION

B800/B820 (REV. A)

... continued from previous page

CACHE JUMPER CONFIGURATION (80487SX-20 CON'T)								
Size	W2C	W2D	W2E	W2G	W2H	W3A	W3B	W4
64KB	1 & 2	1 & 2	1 & 2	1 & 2	1 & 2	2 & 3	1 & 2	1 & 2
128KB	1 & 2	1 & 2	1 & 2	1 & 2	1 & 2	2 & 3	1 & 2	1 & 2
256KB	1 & 2	1 & 2	1 & 2	1 & 2	1 & 2	2 & 3	1 & 2	1 & 2

Note: Pins designated should be in the closed position.

CACHE JUMPER CONFIGURATION (80486DX-33)							
Size	JP8A	JP8B	JP8C	JP8E	JP8F	JP12	JP13
64KB	2 & 3	1 & 2	1 & 2	2 & 3	1 & 2	1 & 2	1 & 2
128KB	1 & 2	2 & 3	2 & 3	1 & 2	1 & 2	1 & 2	1 & 2
256KB	2 & 3	1 & 2	1 & 2	1 & 2	2 & 3	1 & 2	1 & 2

Note: Pins designated should be in the closed position.

CACHE JUMPER CONFIGURATION (80486DX-33 CON'T)							
Size	JP30	JP40	W1A	W1B	W1C	W2A	W2C
64KB	1 & 2	5 & 6	1 & 2	1 & 2	1 & 2	1 & 2	1 & 2
128KB	1 & 2	5 & 6	1 & 2	1 & 2	1 & 2	1 & 2	1 & 2
256KB	1 & 2	5 & 6	1 & 2	1 & 2	1 & 2	1 & 2	1 & 2

Note: Pins designated should be in the closed position.

CACHE JUMPER CONFIGURATION (80486DX-33 CON'T)							
Size	W2D	W2E	W2G	W2H	W3A	W3B	W4
64KB	1 & 2	1 & 2	1 & 2	1 & 2	2 & 3	1 & 2	1 & 2
128KB	1 & 2	1 & 2	1 & 2	1 & 2	2 & 3	1 & 2	1 & 2
256KB	1 & 2	1 & 2	1 & 2	1 & 2	2 & 3	1 & 2	1 & 2

Note: Pins designated should be in the closed position.

CACHE JUMPER CONFIGURATION (80486DX-50)							
Size	JP8A	JP8B	JP8C	JP8E	JP8F	JP12	JP13
64KB	2 & 3	1 & 2	1 & 2	2 & 3	1 & 2	1 & 2	1 & 2
128KB	1 & 2	2 & 3	2 & 3	1 & 2	1 & 2	1 & 2	1 & 2
256KB	2 & 3	1 & 2	1 & 2	1 & 2	2 & 3	1 & 2	1 & 2

Note: Pins designated should be in the closed position.

CACHE JUMPER CONFIGURATION (80486DX-50 CON'T)							
Size	JP30	JP40	W1A	W1B	W1C	W2A	W2C
64KB	1 & 2	Open	1 & 2	1 & 2	1 & 2	1 & 2	1 & 2
128KB	1 & 2	Open	1 & 2	1 & 2	1 & 2	1 & 2	1 & 2
256KB	1 & 2	Open	1 & 2	1 & 2	1 & 2	1 & 2	1 & 2

Note: Pins designated should be in the closed position.

Continued on next page. . .

MECER CORPORATION

B800/B820 (REV. A)

... continued from previous page

CACHE JUMPER CONFIGURATION (80486DX-50 CON'T)

Size	W2D	W2E	W2G	W2H	W3A	W3B	W4
64KB	1 & 2	1 & 2	1 & 2	1 & 2	2 & 3	1 & 2	1 & 2
128KB	1 & 2	1 & 2	1 & 2	1 & 2	2 & 3	1 & 2	1 & 2
256KB	1 & 2	1 & 2	1 & 2	1 & 2	2 & 3	1 & 2	1 & 2

Note: Pins designated should be in the closed position.

CACHE JUMPER CONFIGURATION (80486DX2-50)

Size	JP8A	JP8B	JP8C	JP8E	JP8F	JP12	JP13
64KB	2 & 3	1 & 2	1 & 2	2 & 3	1 & 2	1 & 2	1 & 2
128KB	1 & 2	2 & 3	2 & 3	1 & 2	1 & 2	1 & 2	1 & 2
256KB	2 & 3	1 & 2	1 & 2	1 & 2	2 & 3	1 & 2	1 & 2

Note: Pins designated should be in the closed position.

CACHE JUMPER CONFIGURATION (80486DX2-50 CON'T)

Size	JP30	JP40	W1A	W1B	W1C	W2A	W2C
64KB	1 & 2	5 & 6, 7 & 8	1 & 2	1 & 2	1 & 2	1 & 2	1 & 2
128KB	1 & 2	5 & 6, 7 & 8	1 & 2	1 & 2	1 & 2	1 & 2	1 & 2
256KB	1 & 2	5 & 6, 7 & 8	1 & 2	1 & 2	1 & 2	1 & 2	1 & 2

Note: Pins designated should be in the closed position.

CACHE JUMPER CONFIGURATION (80486DX2-50 CON'T)

Size	W2D	W2E	W2G	W2H	W3A	W3B	W4
64KB	1 & 2	1 & 2	1 & 2	1 & 2	2 & 3	1 & 2	1 & 2
128KB	1 & 2	1 & 2	1 & 2	1 & 2	2 & 3	1 & 2	1 & 2
256KB	1 & 2	1 & 2	1 & 2	1 & 2	2 & 3	1 & 2	1 & 2

Note: Pins designated should be in the closed position.

CACHE JUMPER CONFIGURATION (80486DX2-66)

Size	JP8A	JP8B	JP8C	JP8E	JP8F	JP12	JP13
64KB	2 & 3	1 & 2	1 & 2	2 & 3	1 & 2	1 & 2	1 & 2
128KB	1 & 2	2 & 3	2 & 3	1 & 2	1 & 2	1 & 2	1 & 2
256KB	2 & 3	1 & 2	1 & 2	1 & 2	2 & 3	1 & 2	1 & 2

Note: Pins designated should be in the closed position.

CACHE JUMPER CONFIGURATION (80486DX2-66 CON'T)

Size	JP30	JP40	W1A	W1B	W1C	W2A	W2C
64KB	1 & 2	5 & 6	1 & 2	1 & 2	1 & 2	1 & 2	1 & 2
128KB	1 & 2	5 & 6	1 & 2	1 & 2	1 & 2	1 & 2	1 & 2
256KB	1 & 2	5 & 6	1 & 2	1 & 2	1 & 2	1 & 2	1 & 2

Note: Pins designated should be in the closed position.

CACHE JUMPER CONFIGURATION (80486DX2-66 CON'T)

Size	W2D	W2E	W2G	W2H	W3A	W3B	W4
64KB	1 & 2	1 & 2	1 & 2	1 & 2	2 & 3	1 & 2	1 & 2
128KB	1 & 2	1 & 2	1 & 2	1 & 2	2 & 3	1 & 2	1 & 2
256KB	1 & 2	1 & 2	1 & 2	1 & 2	2 & 3	1 & 2	1 & 2

Note: Pins designated should be in the closed position.