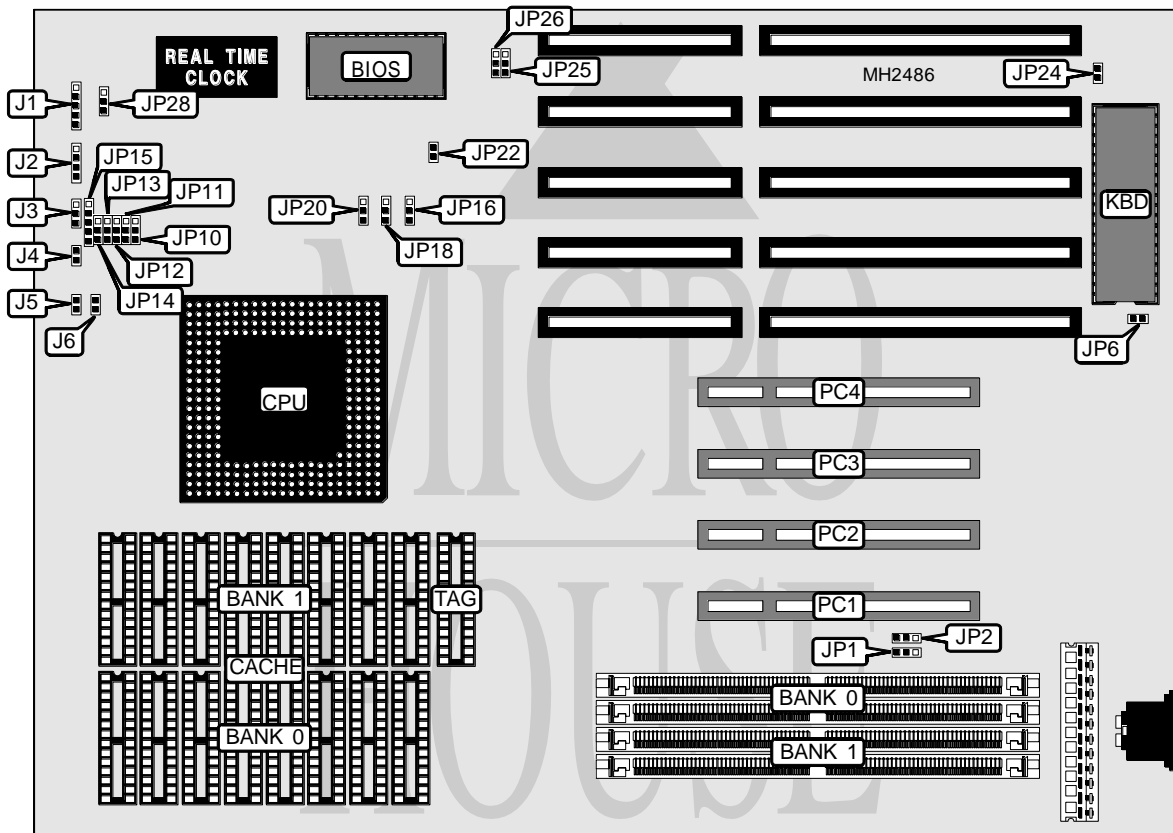


M TECHNOLOGIES, INC. R512 PENTIUM PCI

Processor	Pentium
Processor Speed	60/66MHz
Chip Set	SIS
Max. Onboard DRAM	128MB
Cache	256/512/1024/2048KB
BIOS	Award
Dimensions	330mm x 218mm
I/O Options	32-bit PCI slots (4), green PC connector
NPU Options	None



CONNECTIONS			
Purpose	Location	Purpose	Location
Power LED & keylock	J1	Reset switch	J5
Speaker	J2	Green PC connector	J6
Turbo switch	J3	Green PC connector	JP6
Turbo LED	J4	32-bit PCI slots	PC1 - PC4

Continued on next page. . .

M TECHNOLOGIES, INC.

R512 PENTIUM PCI

... continued from previous page

USER CONFIGURABLE SETTINGS		
Function	Jumper	Position
í Factory configured - do not alter	JP16	N/A
í Factory configured - do not alter	JP18	N/A
í Pipeline mode disabled	JP20	pins 1 & 2 closed
Pipeline mode enabled	JP20	pins 2 & 3 closed
í Monitor type select monochrome	JP24	Open
Monitor type select EGA/VGA	JP24	Closed
í Factory configured - do not alter	JP25	N/A
í Factory configured - do not alter	JP26	N/A
í CMOS memory normal operation	JP28	pins 1 & 2 closed
CMOS memory clear	JP28	pins 2 & 3 closed

DRAM CONFIGURATION (MODE 1)		
Size	Bank 0	Bank 1
2MB	(2) 256K x 36	NONE
4MB	(2) 256K x 36	(2) 256K x 36
8MB	(2) 1M x 36	NONE
16MB	(2) 1M x 36	(2) 1M x 36
24MB	(2) 1M x 36	(2) 2M x 36
32MB	(2) 4M x 36	NONE
40MB	(2) 1M x 36	(2) 4M x 36
64MB	(2) 4M x 36	(2) 4M x 36

DRAM CONFIGURATION (MODE 2)		
Size	Bank 0	Bank 1
4MB	(2) 512K x 36	NONE
8MB	(2) 512K x 36	(2) 512K x 36
12MB	(2) 512K x 36	(2) 1M x 36
16MB	(2) 2M x 36	NONE
20MB	(2) 512K x 36	(2) 2M x 36
32MB	(2) 2M x 36	(2) 2M x 36
36MB	(2) 512K x 36	(2) 4M x 36
48MB	(2) 2M x 36	(2) 4M x 36
64MB	(2) 8M x 36	NONE
80MB	(2) 2M x 36	(2) 8M x 36
128MB	(2) 8M x 36	(2) 8M x 36

DRAM JUMPER CONFIGURATION		
Type	JP1	JP2
Mode 1	pins 1 & 2 closed	pins 1 & 2 closed
Mode 2	pins 2 & 3 closed	pins 2 & 3 closed

Note: Mode 1 = Single sided SIMM in Bank 0 & single or double sided SIMM in Bank 1. Mode 2 = Double sided SIMM in Bank 0 & single or double sided SIMM in Bank 1.

Continued on next page...

M TECHNOLOGIES, INC.

R512 PENTIUM PCI

... continued from previous page

CACHE CONFIGURATION			
Size	Bank 0	Bank 1	TAG
256KB	(8) 32K x 8	NONE	(1) 32K x 8
512KB	(8) 32K x 8	(8) 32K x 8	(1) 32K x 8
512KB	(8) 64K x 8	NONE	(1) 32K x 8
1MB	(8) 64K x 8	(8) 64K x 8	(1) 32K x 8
1MB	(8) 128K x 8	NONE	(1) 32K x 8
2MB	(8) 128K x 8	(8) 128K x 8	(1) 64K x 8

CACHE JUMPER CONFIGURATION						
Size	JP10	JP11	JP12	JP13	JP14	JP15
256KB	1 & 2	1 & 2	1 & 2	1 & 2	2 & 3	1 & 2, 3 & 4
512KB	2 & 3	1 & 2	1 & 2	2 & 3	2 & 3	2 & 3, 4 & 5
512KB	2 & 3	1 & 2	1 & 2	1 & 2	1 & 2	1 & 2, 3 & 4
1MB	2 & 3	2 & 3	1 & 2	2 & 3	2 & 3	2 & 3, 4 & 5
1MB	2 & 3	2 & 3	1 & 2	1 & 2	2 & 3	1 & 2, 3 & 4
2MB	2 & 3	2 & 3	2 & 3	2 & 3	2 & 3	2 & 3, 4 & 5

Note: Pins designated should be in the closed position.

CPU SPEED CONFIGURATION	
Speed	JP22
60MHz	Open
66MHz	Closed