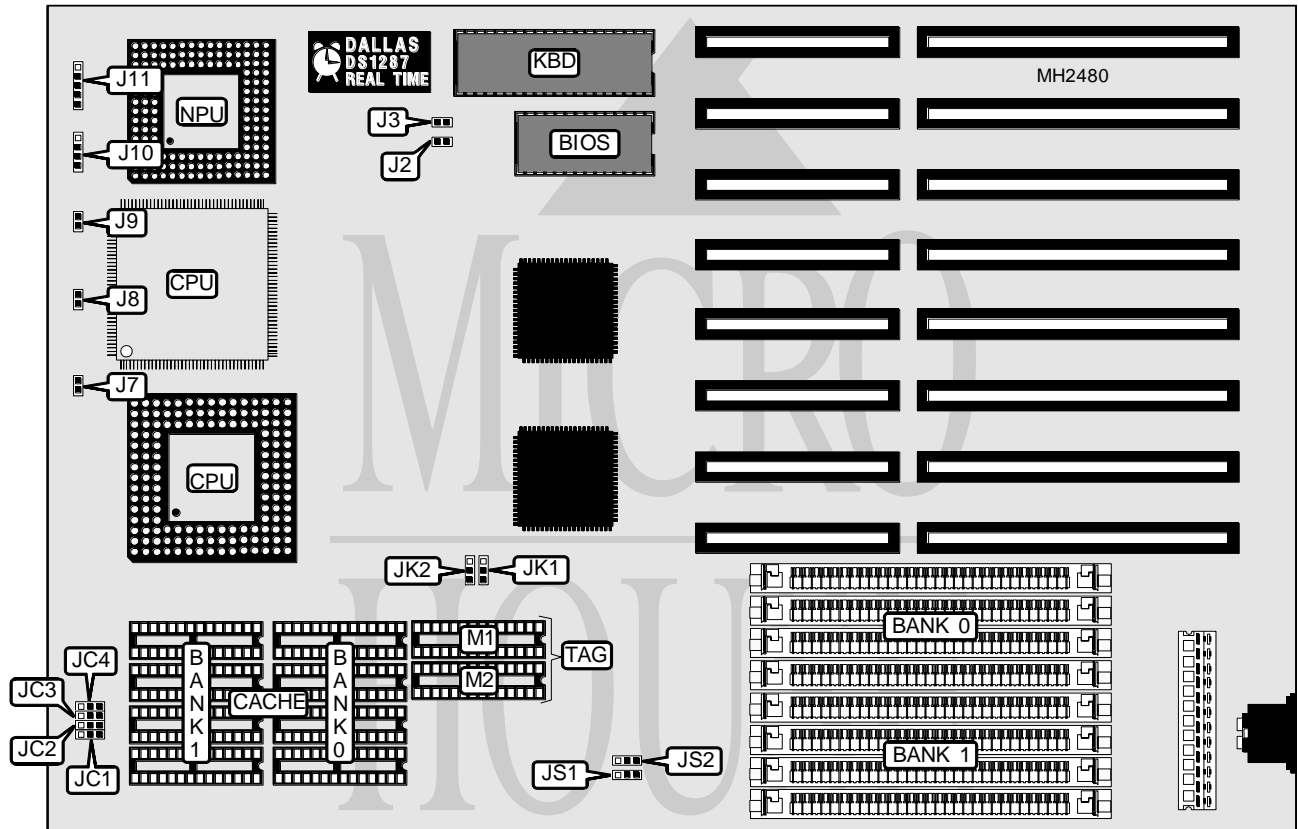


# MODULAR CIRCUIT TECHNOLOGY

## MCT 486 ISA

**Processor** 80486SX/80486DX/80486DX2  
**Processor Speed** 33/50/66(internal)MHz  
**Chip Set** VIA  
**Max. Onboard DRAM** 128MB  
**Cache** 64/128/256KB  
**BIOS** AMI  
**Dimensions** 330mm x 218mm  
**I/O Options** None  
**NPU Options** 4167



CONNECTIONS			
Purpose	Location	Purpose	Location
Turbo LED	J7	Speaker	J10
Turbo switch	J8	Power LED & keylock	J11
Reset switch	J9		

Continued on next page. . .

# MODULAR CIRCUIT TECHNOLOGY

## MCT 486 ISA

... continued from previous page

### USER CONFIGURABLE SETTINGS

Function	Jumper	Position
í Factory configured - do not alter	J2	Open
í Monitor type select monochrome/color	J3	Open
Monitor type select color only	J3	Closed

### DRAM CONFIGURATION

Size	Bank 0	Bank 1
1MB	(4) 256K x 9	NONE
2MB	(4) 256K x 9	(4) 256K x 9
4MB	(4) 1M x 9	NONE
5MB	(4) 256K x 9	(4) 1M x 9
8MB	(4) 1M x 9	(4) 1M x 9
16MB	(4) 4M x 9	NONE
17MB	(4) 256K x 9	(4) 4M x 9
20MB	(4) 1M x 9	(4) 4M x 9
32MB	(4) 4M x 9	(4) 4M x 9
64MB	(4) 16M x 9	NONE
65MB	(4) 256K x 9	(4) 16M x 9
68MB	(4) 1M x 9	(4) 16M x 9
80MB	(4) 4M x 9	(4) 16M x 9
128MB	(4) 16M x 9	(4) 16M x 9

### CACHE CONFIGURATION

Size	Bank 0	Bank 1	TAG (M1)	TAG (M2)
64KB	(4) 8K x 8	(4) 8K x 8	(1) 32K x 8	NONE
128KB	(4) 32K x 8	NONE	(1) 32K x 8	NONE
256KB	(4) 32K x 8	(4) 32K x 8	(1) 32K x 8	(1) 32K x 8

### CACHE JUMPER CONFIGURATION

Size	JS1	JS2
64KB	pins 1 & 2 closed	pins 1 & 2 closed
128KB	pins 1 & 2 closed	pins 2 & 3 closed
256KB	pins 2 & 3 closed	pins 2 & 3 closed

### CPU TYPE CONFIGURATION

Type	JC1	JC2	JC3	JC4
4167	pins 1 & 2 closed	pins 1 & 2 closed	pins 2 & 3 closed	pins 2 & 3 closed
80486SX	pins 2 & 3 closed	pins 2 & 3 closed	pins 2 & 3 closed	Open
80486DX	pins 1 & 2 closed	pins 1 & 2 closed	pins 1 & 2 closed	pins 1 & 2 closed
80486DX2	pins 1 & 2 closed	pins 1 & 2 closed	pins 1 & 2 closed	pins 1 & 2 closed

### CPU CLOCK SPEED CONFIGURATION

Speed	JK1	JK2
1x	pins 2 & 3 closed	pins 2 & 3 closed
2x	pins 1 & 2 closed	pins 1 & 2 closed