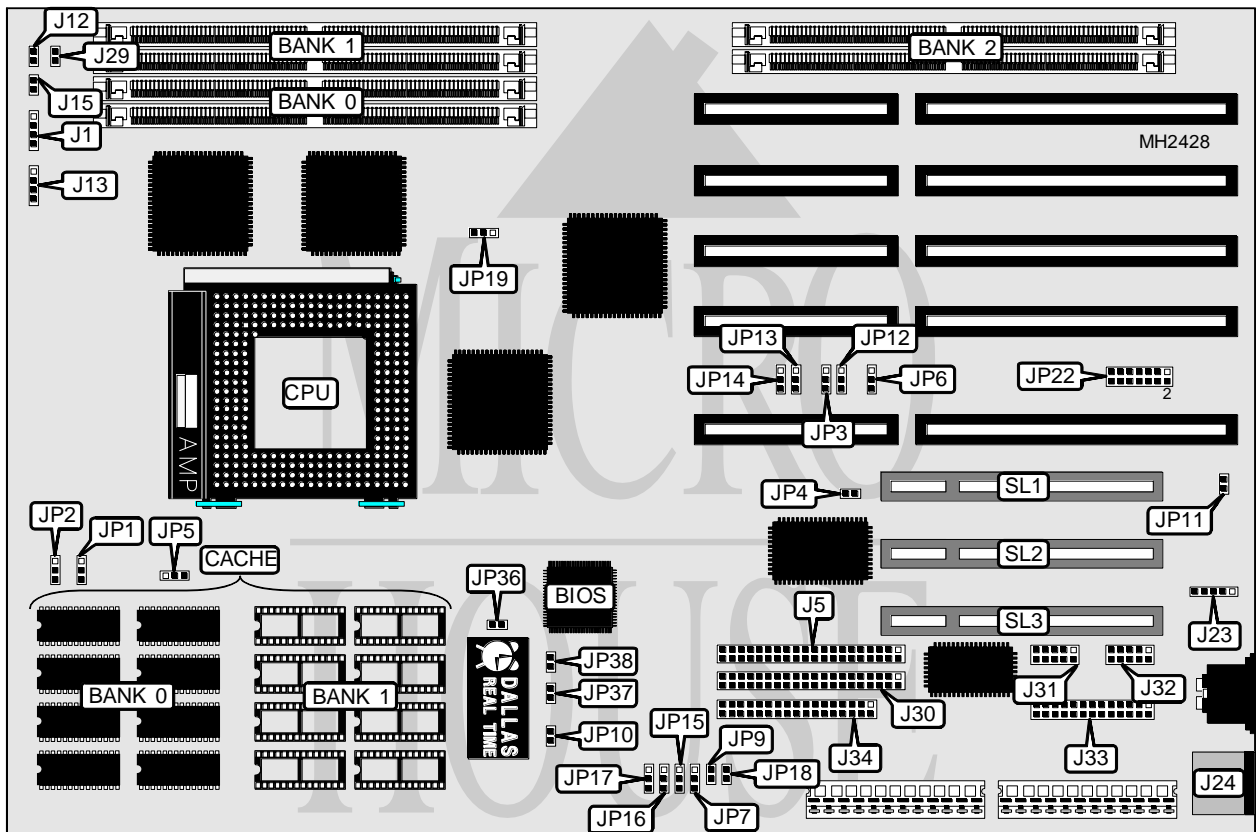


MICRONICS COMPUTERS, INC. M54PI (DIABLO BOARD)

Processor	Pentium
Processor Speed	90/100MHz
Chip Set	Intel
Max. Onboard DRAM	192MB
Cache	512KB
BIOS	Phoenix
Dimensions	254mm x 218mm
I/O Options	32-bit PCI slots (3), floppy drive interface, IDE interface (2), parallel port, PS/2 mouse port, serial ports (2)
NPU Options	None



CONNECTIONS			
Purpose	Location	Purpose	Location
Speaker	J1	IDE interface LED	J29
PCI IDE interface	J5	ISA IDE interface	J30
Reset switch	J12	Serial port 1	J31
Power LED & keylock	J13	Serial port 2	J32
Turbo LED	J15	Parallel port	J33
External keyboard connector	J23	Floppy drive interface	J34
PS/2 mouse port	J24	32-bit PCI slots	SL1-SL3

Continued on next page. . .

MICRONICS COMPUTERS, INC.

M54PI (DIABLO BOARD)

... continued from previous page

USER CONFIGURABLE SETTINGS		
Function	Jumper	Setting
í Factory configured - do not alter	JP1	pins 1 & 2 closed
í Host bus frequency select 2/3	JP2	pins 1 & 2 closed
Host bus frequency select 1/2	JP2	pins 2 & 3 closed
í PCI IDE on IRQ14	JP3	pins 1 & 2 closed
PCI IDE on IRQ15	JP3	pins 2 & 3 closed
í PCI IDE interface enabled	JP4	Open
PCI IDE interface disabled	JP4	Closed
í Keyboard SMI using SIO-SMI	JP6	pins 1 & 2 closed
Keyboard SMI using IRQ10	JP6	pins 2 & 3 closed
í Normal BIOS mode	JP7	pins 1 & 2 closed
BIOS recovery mode	JP7	pins 2 & 3 closed
í Flash BIOS write protect enabled	JP9	Open
Flash BIOS write protect disabled	JP9	Closed
í Normal operation	JP10	Closed
Clear RTC	JP10	Open
í Monitor type select color	JP11	Closed
Monitor type select monochrome	JP11	Open
í ISA IDE on IRQ15	JP12	pins 2 & 3 closed
ISA IDE on IRQ14	JP12	pins 1 & 2 closed
í Parallel port on IRQ7	JP17	pins 1 & 2 closed
Parallel port on IRQ5	JP17	pins 2 & 3 closed
í Super I/O chip SMC665 enabled	JP18	Open
Super I/O chip SMC665 disabled	JP18	Closed
í Factory configured - do not alter	JP22	Open

DRAM CONFIGURATION			
Size	Bank 0	Bank 1	Bank 2
8MB	(2) 1MB x 36	NONE	NONE
16MB	(2) 1MB x 36	(2) 1MB x 36	NONE
16MB	(2) 2MB x 36	NONE	NONE
24MB	(2) 1MB x 36	(2) 1MB x 36	(2) 1MB x 36
24MB	(2) 1MB x 36	(2) 2MB x 36	NONE
32MB	(2) 2MB x 36	(2) 2MB x 36	NONE
32MB	(2) 1MB x 36	(2) 1MB x 36	(2) 2MB x 36
40MB	(2) 1MB x 36	(2) 2MB x 36	(2) 2MB x 36
40MB	(2) 1MB x 36	(2) 4MB x 36	NONE
48MB	(2) 2MB x 36	(2) 4MB x 36	NONE
48MB	(2) 1MB x 36	(2) 1MB x 36	(2) 4MB x 36
56MB	(2) 1MB x 36	(2) 2MB x 36	(2) 4MB x 36
64MB	(2) 4MB x 36	(2) 4MB x 36	NONE
64MB	(2) 8MB x 36	NONE	NONE
72MB	(2) 1MB x 36	(2) 4MB x 36	(2) 4MB x 36
72MB	(2) 1MB x 36	(2) 8MB x 36	NONE
80MB	(2) 2MB x 36	(2) 4MB x 36	(2) 4MB x 36

Continued on next page. . .

MICRONICS COMPUTERS, INC.

M54PI (DIABLO BOARD)

... continued from previous page

DRAM CONFIGURATION (CON'T)			
Size	Bank 0	Bank 1	Bank 2
80MB	(2) 2MB x 36	(2) 8MB x 36	NONE
80MB	(2) 1MB x 36	(2) 1MB x 36	(2) 8MB x 36
96MB	(2) 4MB x 36	(2) 4MB x 36	(2) 4MB x 36
96MB	(2) 4MB x 36	(2) 8MB x 36	NONE
96MB	(2) 2MB x 36	(2) 2MB x 36	(2) 8MB x 36
104MB	(2) 1MB x 36	(2) 4MB x 36	(2) 8MB x 36
112MB	(2) 2MB x 36	(2) 4MB x 36	(2) 8MB x 36
128MB	(2) 8MB x 36	(2) 8MB x 36	NONE
128MB	(2) 4MB x 36	(2) 4MB x 36	(2) 8MB x 36
136MB	(2) 1MB x 36	(2) 8MB x 36	(2) 8MB x 36
144MB	(2) 2MB x 36	(2) 8MB x 36	(2) 8MB x 36
160MB	(2) 4MB x 36	(2) 8MB x 36	(2) 8MB x 36
192MB	(2) 8MB x 36	(2) 8MB x 36	(2) 8MB x 36

CACHE CONFIGURATION		
Size	Bank 0	Bank 1
256KB	(8) 32K x 8	NONE
512KB	(8) 32K x 8	(8) 32K x 8

CACHE JUMPER CONFIGURATION		
Size	JP5	JP19
256KB	pins 2 & 3 closed	pins 1 & 2 closed
512KB	pins 1 & 2 closed	pins 2 & 3 closed

CPU SPEED CONFIGURATION			
Speed	JP36	JP37	JP38
90MHz	Closed	Open	Closed
100MHz	Open	Closed	Open

ISA IDE DME CHANNEL SELECTION		
Channel	JP13	JP14
6	pins 1 & 2 closed	pins 1 & 2 closed
7	pins 2 & 3 closed	pins 2 & 3 closed

ECP MODE PARALLEL PORT DMA SELECTION		
Channel	JP15	JP16
1	pins 1 & 2 closed	pins 1 & 2 closed
3	pins 2 & 3 closed	pins 2 & 3 closed