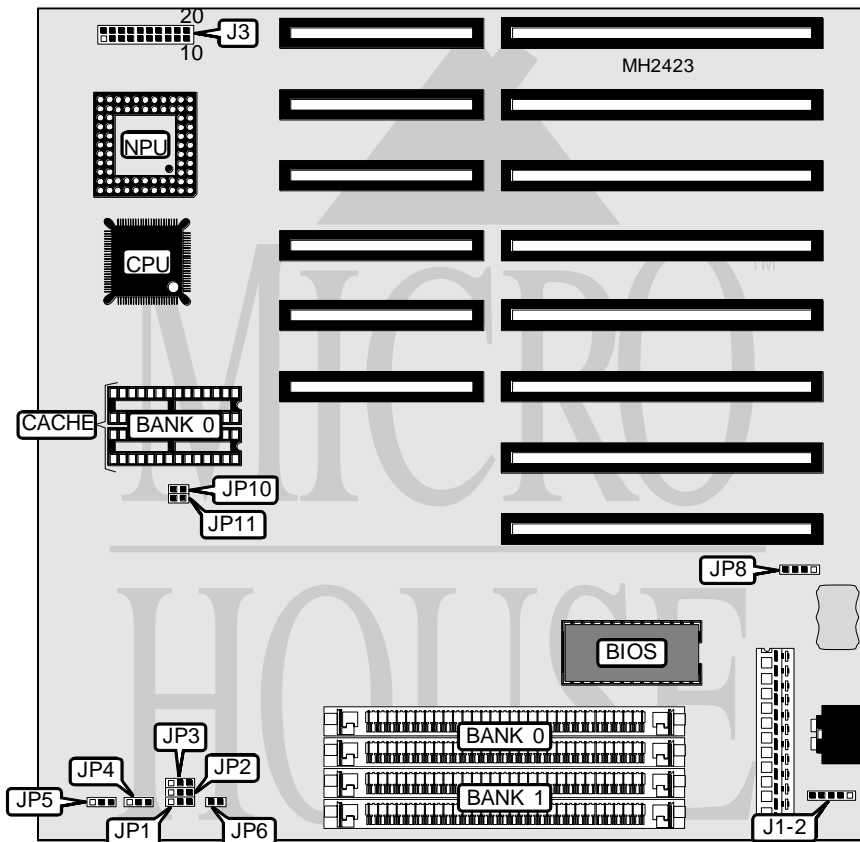


FUJIKAMA USA, INC.

80386SX-25/33MHZ (VER. 2)

Processor	80386SX
Processor Speed	25/33MHz
Chip Set	ALI
Max. Onboard DRAM	16MB
Cache	16/64KB
BIOS	Unidentified
Dimensions	220mm x 220mm
I/O Options	None
NPU Options	80387SX



CONNECTIONS			
Purpose	Location	Purpose	Location
Power LED & keylock	J3 (pins 1 - 5)	Turbo switch	J3 (pins 15 - 7)
Speaker	J3 (pins 6 - 10)	Reset switch	J3 (pins 19 - 20)
Turbo LED	J3 (pins 12 - 13)	External battery	JP8

Continued on next page. . .

FUJIKAMA USA, INC.
80386SX-25/33MHZ (VER. 2)

... continued from previous page

USER CONFIGURABLE SETTINGS		
Function	Jumper	Position
í Battery type select external	JP8	Closed
í Battery type select internal	JP8	pins 2 & 3 closed
CMOS memory clear	JP8	pins 1 & 2 closed

DRAM CONFIGURATION		
Size	Bank 0	Bank 1
512KB	(2) 256K x 9	NONE
1MB	(2) 256K x 9	(2) 256K x 9
2MB	(2) 1M x 9	NONE
4MB	(2) 1M x 9	(2) 1M x 9
8MB	(2) 4M x 9	NONE
16MB	(2) 4M x 9	(2) 4M x 9

CACHE CONFIGURATION	
Size	Bank 0
16KB	(2) 8K x 8
64KB	(2) 32K x 8

CACHE JUMPER CONFIGURATION					
Size	JP1	JP2	JP3	JP10	JP11
16KB	2 & 3	2 & 3	2 & 3	Open	Open
64KB	1 & 2	1 & 2	1 & 2	Closed	Closed

Note: Pins designated should be in the closed position.

CPU SPEED CONFIGURATION	
Speed	JP6
25MHZ	Open
33MHz	Closed

NPU CONFIGURATION		
Setting	JP4	JP5
Asynchronous	pins 1 & 2 closed	N/A
Synchronous	pins 2 & 3 closed	N/A
NPX installed	N/A	pins 1 & 2 closed
NPX not installed	N/A	pins 2 & 3 closed