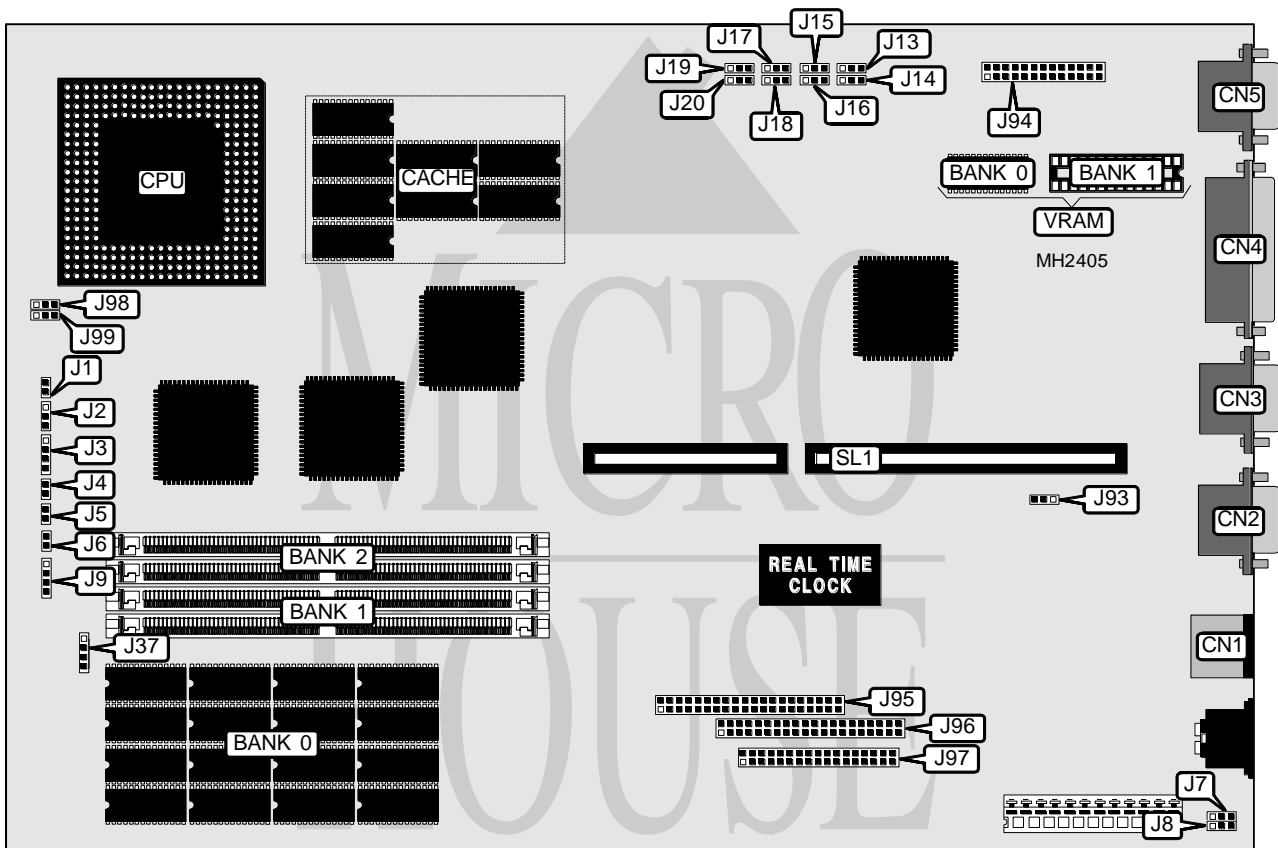


INTEL CORPORATION PREMIERE/PCI LC

Processor	Pentium
Processor Speed	60/66MHz
Chip Set	Intel
Max. Onboard DRAM	136MB
Cache	256KB
BIOS	AMI
Dimensions	330mm x 218mm
I/O Options	32-bit PCI slots on riser card (2), floppy drive interface, green PC connector, IDE interfaces (2), parallel port, PS/2 mouse port, serial ports (2), VESA feature connector, VGA port
NPU Options	None



Continued on next page. . .

INTEL CORPORATION PREMIERE/PCI LC

... continued from previous page

CONNECTIONS			
Purpose	Location	Purpose	Location
PS/2 mouse port	CN1	Green PC connector	J6
Serial port 1	CN2	Speaker	J9
Serial port 2	CN3	Auxiliary power connector	J93
Parallel port	CN4	VESA feature connector	J94
VGA port	CN5	IDE interface (PCI)	J95
Reset switch	J1	IDE interface (ISA)	J96
Power LED	J2	Floppy drive interface	J97
IDE interface LED	J3	Chassis fan power (12v)	J98
Turbo LED	J4	Chassis fan power (10v)	J99
Keylock	J5	Riser Card	SL1

USER CONFIGURABLE SETTINGS		
Function	Jumper	Position
í Factory configured - do not alter	J8	Open
í Factory configured - do not alter	J13	Open
í Monitor type select color	J15	pins 2 & 3 closed
Monitor type select monochrome	J15	pins 1 & 2 closed
í Password enabled	J16	pins 1 & 2 closed
Password disabled	J16	pins 2 & 3 closed
í Flash boot normal mode	J17	pins 2 & 3 closed
Flash boot recovery mode	J17	pins 1 & 2 closed
í Flash BIOS write protect disabled	J18	pins 1 & 2 closed
Flash BIOS write protect enabled	J18	pins 2 & 3 closed
í CMOS memory normal operation	J19	pins 2 & 3 closed
CMOS memory clear	J19	pins 1 & 2 closed
í CMOS setup enabled	J20	pins 1 & 2 closed
CMOS setup disabled	J20	pins 2 & 3 closed
í On board speaker enabled	J37	pins 3 & 4 closed
On board speaker disabled	J37	Open

DRAM CONFIGURATION			
Size	Bank 0	Bank 1	Bank 2
10MB	(8) 481000	(2) 256K x 36	NONE
12MB	(8) 481000	(2) 256K x 36	(2) 256K x 36
12MB	(8) 481000	(2) 512K x 36	NONE
14MB	(8) 481000	(2) 256K x 36	(2) 512K x 36
14MB	(8) 481000	(2) 512K x 36	(2) 256K x 36
16MB	(8) 481000	(2) 512K x 36	(2) 512K x 36
16MB	(8) 481000	(2) 1M x 36	NONE
18MB	(8) 481000	(2) 256K x 36	(2) 1M x 36
18MB	(8) 481000	(2) 1M x 36	(2) 256K x 36
20MB	(8) 481000	(2) 512K x 36	(2) 1M x 36
20MB	(8) 481000	(2) 1M x 36	(2) 512K x 36
24MB	(8) 481000	(2) 1M x 36	(2) 1M x 36

Continued on next page. . .

INTEL CORPORATION PREMIERE/PCI LC

... continued from previous page

DRAM CONFIGURATION (CON'T)			
Size	Bank 0	Bank 1	Bank 2
24MB	(8) 481000	(2) 2M x 36	NONE
26MB	(8) 481000	(2) 256K x 36	(2) 2M x 36
26MB	(8) 481000	(2) 2M x 36	(2) 256K x 36
28MB	(8) 481000	(2) 512K x 36	(2) 2M x 36
28MB	(8) 481000	(2) 2M x 36	(2) 512K x 36
32MB	(8) 481000	(2) 1M x 36	(2) 2M x 36
32MB	(8) 481000	(2) 2M x 36	(2) 1M x 36
40MB	(8) 481000	(2) 2M x 36	(2) 2M x 36
40MB	(8) 481000	(2) 4M x 36	NONE
42MB	(8) 481000	(2) 256K x 36	(2) 4M x 36
42MB	(8) 481000	(2) 4M x 36	(2) 256K x 36
44MB	(8) 481000	(2) 512K x 36	(2) 4M x 36
44MB	(8) 481000	(2) 4M x 36	(2) 512K x 36
48MB	(8) 481000	(2) 1M x 36	(2) 4M x 36
48MB	(8) 481000	(2) 4M x 36	(2) 1M x 36
56MB	(8) 481000	(2) 2M x 36	(2) 4M x 36
56MB	(8) 481000	(2) 4M x 36	(2) 2M x 36
72MB	(8) 481000	(2) 4M x 36	(2) 4M x 36
72MB	(8) 481000	(2) 8M x 36	NONE
74MB	(8) 481000	(2) 256K x 36	(2) 8M x 36
74MB	(8) 481000	(2) 8M x 36	(2) 256K x 36
76MB	(8) 481000	(2) 512K x 36	(2) 8M x 36
76MB	(8) 481000	(2) 8M x 36	(2) 512K x 36
80MB	(8) 481000	(2) 1M x 36	(2) 8M x 36
80MB	(8) 481000	(2) 8M x 36	(2) 1M x 36
88MB	(8) 481000	(2) 2M x 36	(2) 8M x 36
88MB	(8) 481000	(2) 8M x 36	(2) 2M x 36
104MB	(8) 481000	(2) 4M x 36	(2) 8M x 36
104MB	(8) 481000	(2) 8M x 36	(2) 4M x 36
136MB	(8) 481000	(2) 8M x 36	(2) 8M x 36

Note: Bank 0 is factory installed and is not configurable.

CACHE CONFIGURATION	
Size	Bank 0
256KB	(8) 32K x 8

Note: Cache is factory installed and is not configurable.

CPU SPEED CONFIGURATION	
Speed	J14
60MHz	pins 2 & 3 closed
66MHz	pins 1 & 2 closed

Continued on next page. . .

INTEL CORPORATION PREMIERE/PCI LC

... continued from previous page

CPU VOLTAGE CONFIGURATION	
Voltage	J7
5.00v (60MHz CPU)	pins 1 & 2 closed
5.25v (66MHz CPU)	pins 2 & 3 closed

VIDEO MEMORY CONFIGURATION		
Size	Bank 0	Bank 1
1MB	(1) 481000	NONE
2MB	(1) 481000	(1) 481000

Note: Bank 0 is factory installed and is not configurable.