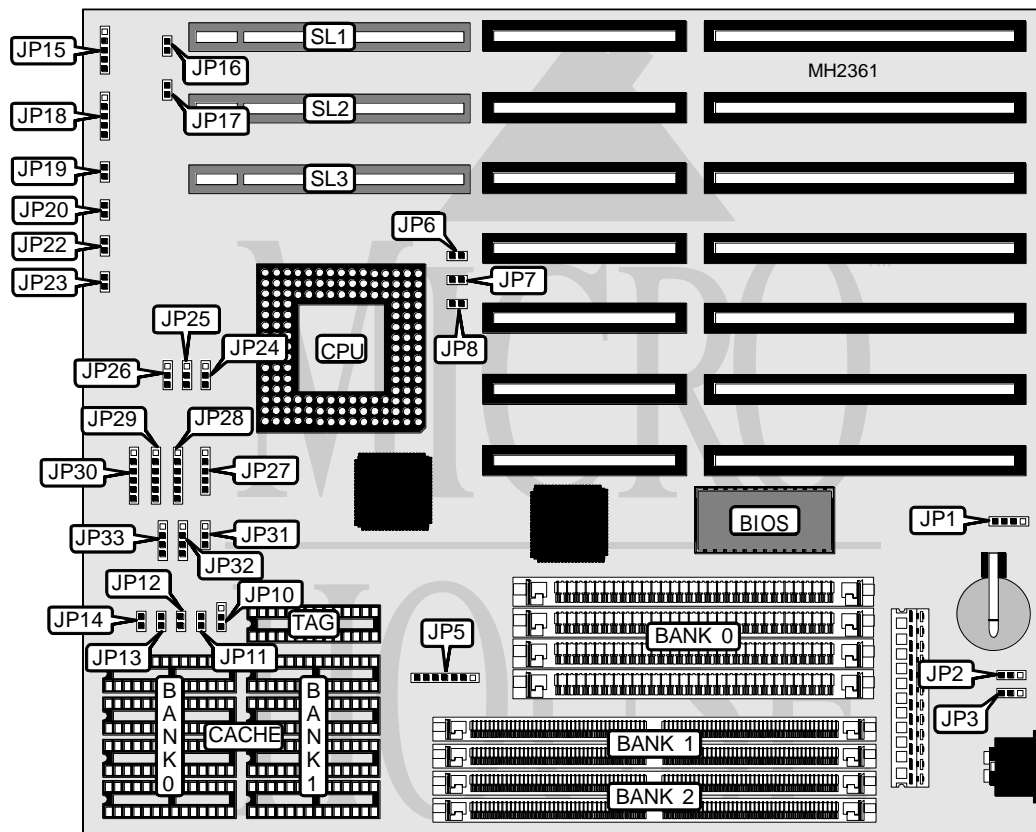


# LION COMPUTERS, INC. VALUE VLB/+

|                          |  |
|--------------------------|--|
| <b>Processor</b>         | CX486S/80486SX/AM486DX/CX486DX/80486DX/AM486DXLT/AM486DX2/<br>CX486DX2/80486DX2/80486DX4/80486SL/80486(P24D)/Pentium Overdrive/ UMC-U5 |
| <b>Processor Speed</b>   | 25/33/40/50/66(internal)/75(internal)/100(internal)MHz   |
| <b>Chip Set</b>          | Unidentified   |
| <b>Max. Onboard DRAM</b> | 64MB   |
| <b>Cache</b>             | 64/128/256/512/1024KB  |
| <b>BIOS</b>              | AMI  |
| <b>Dimensions</b>        | 260mm x 220mm  |
| <b>I/O Options</b>       | 32-bit VESA local bus slots (3), green PC connector  |
| <b>NPU Options</b>       | None   |



| CONNECTIONS         |          |                             |           |
|---------------------|----------|-----------------------------|-----------|
| Purpose             | Location | Purpose                     | Location  |
| External battery    | JP1      | Reset switch                | JP20      |
| Power LED & keylock | JP15     | Turbo switch                | JP22      |
| Speaker             | JP18     | Green PC connector          | JP23      |
| Turbo LED           | JP19     | 32-bit VESA local bus slots | SL1 - SL3 |

Continued on next page. . .

LION COMPUTERS, INC.  
VALUE VLB/+

... continued from previous page

| USER CONFIGURABLE SETTINGS                      |        |                   |
|---|--------|-------------------|
| Function  | Jumper | Position          |
| í CMOS memory normal operation internal battery | JP1    | pins 2 & 3 closed |
| CMOS memory clear                               | JP1    | pins 3 & 4 closed |
| í Factory configured - do not alter             | JP2    | N/A               |
| í Flash BIOS voltage select 5v                  | JP3    | pins 1 & 2 closed |
| Flash BIOS voltage select 12v                   | JP3    | pins 2 & 3 closed |

| DRAM CONFIGURATION |              |               |               |
|--------------------|--------------|---------------|---------------|
| Size               | Bank 0       | Bank 1        | Bank 2        |
| 1MB                | (4) 256K x 9 | NONE          | NONE          |
| 2MB                | NONE         | (1) 512K x 36 | NONE          |
| 4MB                | (4) 1M x 9   | NONE          | NONE          |
| 4MB                | NONE         | (1) 1M x 36   | NONE          |
| 4MB                | NONE         | (1) 512K x 36 | (1) 512K x 36 |
| 6MB                | NONE         | (1) 512K x 36 | (1) 1M x 36   |
| 8MB                | (4) 1M x 9   | NONE          | (1) 1M x 36   |
| 8MB                | NONE         | (1) 2M x 36   | NONE          |
| 8MB                | NONE         | (1) 1M x 36   | (1) 1M x 36   |
| 10MB               | NONE         | (1) 512K x 36 | (1) 2M x 36   |
| 12MB               | (4) 1M x 9   | NONE          | (1) 2M x 36   |
| 12MB               | NONE         | (1) 1M x 36   | (1) 2M x 36   |
| 16MB               | (4) 4M x 9   | NONE          | NONE          |
| 16MB               | NONE         | (1) 2M x 36   | (1) 2M x 36   |
| 16MB               | NONE         | (1) 4M x 36   | NONE          |
| 20MB               | (4) 1M x 9   | NONE          | (1) 4M x 36   |
| 20MB               | NONE         | (1) 1M x 36   | (1) 4M x 36   |
| 32MB               | (4) 4M x 9   | NONE          | (1) 4M x 36   |
| 32MB               | NONE         | (1) 4M x 36   | (1) 4M x 36   |
| 32MB               | NONE         | (1) 8M x 36   | NONE          |
| 64MB               | NONE         | (1) 8M x 36   | (1) 8M x 36   |

| CACHE CONFIGURATION |              |              |              |
|---------------------|--------------|--------------|--------------|
| Size                | Bank 0       | Bank 1       | TAG          |
| 64KB                | (4) 8K x 8   | (4) 8K x 8   | (1) 8K x 8   |
| 128KB/1             | (4) 32K x 8  | NONE         | (1) 16K x 8  |
| 128KB/2             | (4) 16K x 8  | (4) 16K x 8  | (1) 16K x 8  |
| 256KB/1             | (4) 64K x 8  | NONE         | (1) 32K x 8  |
| 256KB/2             | (4) 32K x 8  | (4) 32K x 8  | (1) 32K x 8  |
| 512KB/1             | (4) 128K x 8 | NONE         | (1) 64K x 8  |
| 512KB/2             | (4) 64K x 8  | (4) 64K x 8  | (1) 64K x 8  |
| 1MB                 | (4) 128K x 8 | (4) 128K x 8 | (1) 128K x 8 |

Continued on next page...

# LION COMPUTERS, INC.

## VALUE VLB/+

... continued from previous page

| CACHE JUMPER CONFIGURATION |                                 |                   |        |        |        |        |
|----------------------------|---------------------------------|-------------------|--------|--------|--------|--------|
| Size/Banks                 | JP5                             | JP10              | JP11   | JP12   | JP13   | JP14   |
| 64KB                       | pins 2 & 3 closed               | pins 2 & 3 closed | Open   | Open   | Open   | Open   |
| 128KB/1                    | pins 1 & 2 closed               | pins 1 & 2 closed | Open   | Open   | Open   | Open   |
| 128KB/2                    | pins 2 & 3 closed               | pins 2 & 3 closed | Open   | Open   | Open   | Closed |
| 256KB/1                    | pins 1 & 2, 3 & 4 closed        | pins 1 & 2 closed | Open   | Open   | Closed | Closed |
| 256KB/2                    | pins 2 & 3 closed               | pins 2 & 3 closed | Open   | Open   | Closed | Closed |
| 512KB/1                    | pins 1 & 2, 3 & 4, 5 & 6 closed | pins 1 & 2 closed | Open   | Closed | Closed | Closed |
| 512KB/2                    | pins 2 & 3, 4 & 5 closed        | pins 2 & 3 closed | Open   | Closed | Closed | Closed |
| 1MB                        | pins 2 & 3, 4 & 5, 6 & 7 closed | pins 2 & 3 closed | Closed | Closed | Closed | Closed |

| CPU TYPE CONFIGURATION |                   |                          |                          |
|------------------------|-------------------|--------------------------|--------------------------|
| Type                   | JP27              | JP28                     | JP29                     |
| CX486S                 | pins 2 & 3        | pins 1 & 2, 3 & 4, 5 & 6 | pins 1 & 2, 3 & 4, 5 & 6 |
| 80486SX                | Open              | pins 2 & 3               | Open                     |
| AM486DX                | Open              | pins 2 & 3               | pins 2 & 3               |
| CX486DX                | pins 2 & 3, 4 & 5 | pins 1 & 2, 3 & 4, 5 & 6 | pins 1 & 2, 3 & 4, 5 & 6 |
| 80486DX                | Open              | pins 2 & 3               | Open                     |
| AM486DXLT              | Open              | pins 2 & 3               | pins 2 & 3               |
| AM486DX2               | Open              | pins 2 & 3               | pins 2 & 3               |
| CX486DX2               | pins 2 & 3        | pins 1 & 2, 3 & 4, 5 & 6 | pins 1 & 2, 3 & 4, 5 & 6 |
| 80486DX2               | Open              | pins 2 & 3               | Open                     |
| 80486DX4               | pins 1 & 2, 3 & 4 | pins 1 & 2               | pins 1 & 2               |
| 80486SL                | pins 1 & 2, 3 & 4 | pins 1 & 2               | pins 1 & 2               |
| P24D                   | pins 1 & 2, 3 & 4 | pins 1 & 2, 4 & 5        | pins 1 & 2, 4 & 5        |
| P24T                   | pins 1 & 2, 3 & 4 | pins 1 & 2               | pins 1 & 2               |
| UMC U5                 | Open              | pins 2 & 3               | pins 2 & 3               |

Note: Pins designated are in the closed position.

| CPU TYPE CONFIGURATION |                          |                   |                   |
|------------------------|--------------------------|-------------------|-------------------|
| Type                   | JP30                     | JP32              | JP33              |
| CX486S                 | pins 2 & 3, 4 & 5        | pins 1 & 2        | pins 1 & 2, 3 & 4 |
| 80486SX                | Open                     | Open              | pins 2 & 3        |
| AM486DX                | pins 1 & 2               | pins 1 & 2, 3 & 4 | pins 1 & 2, 3 & 4 |
| CX486DX                | pins 1 & 2, 3 & 4, 5 & 6 | Open              | pins 2 & 3        |
| 80486DX                | Open                     | pins 1 & 2        | pins 1 & 2, 3 & 4 |
| AM486DXLT              | pins 1 & 2               | pins 1 & 2, 3 & 4 | pins 1 & 2, 3 & 4 |
| AM486DX2               | pins 1 & 2               | pins 1 & 2, 3 & 4 | pins 1 & 2, 3 & 4 |
| CX486DX2               | pins 2 & 3, 4 & 5        | pins 1 & 2        | pins 1 & 2, 3 & 4 |
| 80486DX2               | Open                     | pins 1 & 2        | pins 1 & 2, 3 & 4 |
| 80486DX4               | pins 5 & 6               | pins 1 & 2        | pins 1 & 2, 3 & 4 |
| 80486SL                | pins 5 & 6               | pins 1 & 2        | pins 1 & 2, 3 & 4 |
| P24D                   | pins 3 & 4, 5 & 6        | pins 1 & 2        | pins 1 & 2, 3 & 4 |
| P24T                   | pins 5 & 6               | pins 2 & 3        | pins 1 & 2, 3 & 4 |
| UMC U5                 | pins 1 & 2               | pins 3 & 4        | pins 2 & 3        |

Note: Pins designated are in the closed position.



LION COMPUTERS, INC.  
VALUE VLB/+

... continued from previous page

| CLOCK SPEED CONFIGURATION |        |        |        |
|---------------------------|--------|--------|--------|
| Speed                     | JP6    | JP7    | JP8    |
| 25MHz                     | Open   | Open   | Closed |
| 33MHz                     | Closed | Closed | Closed |
| 40MHz                     | Open   | Closed | Closed |
| 50MHz                     | Closed | Open   | Open   |
| 66iMHz                    | Closed | Closed | Closed |
| 75iMHz                    | Open   | Open   | Closed |
| 100iMHz                   | Open   | Closed | Closed |

| CPU VOLTAGE CONFIGURATION |                   |                   |                   |
|---------------------------|-------------------|-------------------|-------------------|
| Voltage                   | JP24              | JP25              | JP26              |
| 5v                        | pins 2 & 3 closed | pins 2 & 3 closed | pins 2 & 3 closed |
| 3.3v                      | pins 1 & 2 closed | pins 1 & 2 closed | pins 1 & 2 closed |

| VESA WAIT STATE CONFIGURATION |        |
|-------------------------------|--------|
| Wait states                   | JP17   |
| 0 wait states                 | Open   |
| 1 wait state                  | Closed |

| VESA BUS SPEED CONFIGURATION |        |
|------------------------------|--------|
| CPU speed                    | JP16   |
| <= 33MHz                     | Open   |
| > 33MHz                      | Closed |