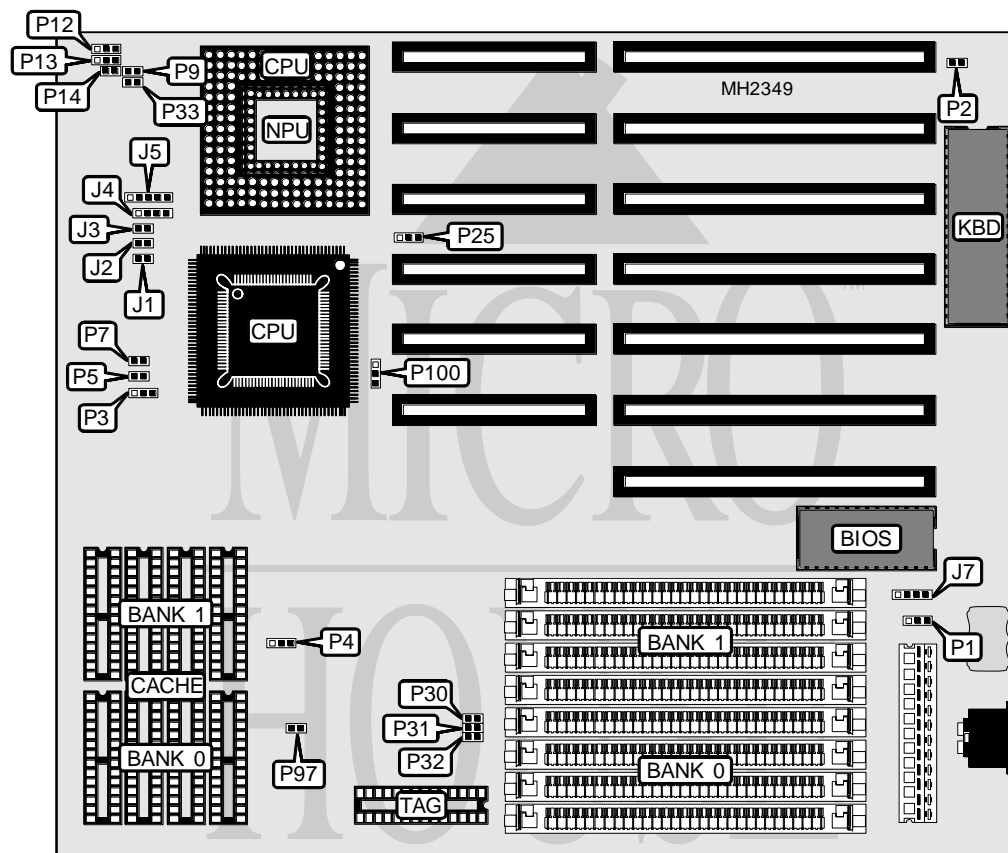


## MAGITRONICS

## 386DX/486SX/486DX/486DX2

|                   |  |
|-------------------|--|
| Processor         | 80386DX/80486SX/80487SX/80486DX/80486DX2 |
| Processor Speed   | 25/33/40/50(internal)/50/66(internal)MHz |
| Chip Set          | Unidentified                             |
| Max. Onboard DRAM | 32MB                                     |
| Cache             | 64/128/256KB                             |
| BIOS              | AMI                                      |
| Dimensions        | 254mm x 220mm                            |
| I/O Options       | None                                     |
| NPU Options       | 80387DX                                  |



## CONNECTIONS

| Purpose      | Location | Purpose             | Location |
|--------------|----------|---------------------|----------|
| Reset switch | J1       | Speaker             | J4       |
| Turbo switch | J2       | Power LED & keylock | J5       |
| Turbo LED    | J3       | External battery    | J7       |

Continued on next page. . .

# MAGITRONICS

## 386DX/486SX/486DX/486DX2

... continued from previous page

| USER CONFIGURABLE SETTINGS     |        |                   |
|--------------------------------|--------|-------------------|
| Function                       | Jumper | Position          |
| í CMOS memory normal operation | P1     | pins 2 & 3 closed |
| CMOS memory clear              | P1     | pins 1 & 2 closed |
| í Monitor type select color    | P2     | Closed            |
| Monitor type select monochrome | P2     | Open              |

| DRAM CONFIGURATION |              |              |
|--------------------|--------------|--------------|
| Size               | Bank 0       | Bank 1       |
| 1MB                | (4) 256K x 9 | NONE         |
| 2MB                | (4) 256K x 9 | (4) 256K x 9 |
| 4MB                | (4) 1M x 9   | NONE         |
| 5MB                | (4) 256K x 9 | (4) 1M x 9   |
| 5MB                | (4) 1M x 9   | (4) 256K x 9 |
| 8MB                | (4) 1M x 9   | (4) 1M x 9   |
| 16MB               | (4) 4M x 9   | NONE         |
| 17MB               | (4) 256K x 9 | (4) 4M x 9   |
| 17MB               | (4) 4M x 9   | (4) 256K x 9 |
| 20MB               | (4) 1M x 9   | (4) 4M x 9   |
| 20MB               | (4) 4M x 9   | (4) 1M x 9   |
| 32MB               | (4) 4M x 9   | (4) 4M x 9   |

| CACHE CONFIGURATION |             |             |             |
|---------------------|-------------|-------------|-------------|
| Size                | Bank 0      | Bank 1      | TAG         |
| 64KB                | (4) 8K x 8  | (4) 8K x 8  | (1) 8K x 8  |
| 128KB               | (4) 32K x 8 | NONE        | (1) 8K x 8  |
| 256KB               | (4) 32K x 8 | (4) 32K x 8 | (1) 32K x 8 |

| CACHE JUMPER CONFIGURATION |                   |        |        |        |
|----------------------------|-------------------|--------|--------|--------|
| Size                       | P3                | P5     | P7     | P9     |
| 64KB                       | pins 2 & 3 closed | Open   | Open   | Open   |
| 128KB                      | pins 1 & 2 closed | Open   | Closed | Closed |
| 256KB                      | pins 2 & 3 closed | Closed | Closed | Closed |

| CPU TYPE CONFIGURATION |                   |                   |        |                   |
|------------------------|-------------------|-------------------|--------|-------------------|
| Type                   | P4                | P25               | P33    | P100              |
| 80386 (PQFP)           | pins 1 & 2 closed | pins 2 & 3 closed | Open   | pins 2 & 3 closed |
| 80486 (PQFP)           | pins 2 & 3 closed | pins 1 & 2 closed | Closed | pins 1 & 2 closed |
| 80486 (PGA)            | pins 2 & 3 closed | pins 1 & 2 closed | Closed | pins 2 & 3 closed |

| CPU TYPE CONFIGURATION |                   |                   |        |
|------------------------|-------------------|-------------------|--------|
| Type                   | P12               | P13               | P14    |
| 80486SX                | pins 2 & 3 closed | Open              | Open   |
| 80487SX                | pins 1 & 2 closed | pins 2 & 3 closed | Closed |
| 80486DX                | pins 1 & 2 closed | pins 1 & 2 closed | Closed |
| 80486DX2               | pins 1 & 2 closed | pins 1 & 2 closed | Closed |

Continued on next page...

**MAGITRONICS****386DX/486SX/486DX/486DX2**

... continued from previous page

| CPU SPEED CONFIGURATION |        |        |        |        |
|-------------------------|--------|--------|--------|--------|
| Speed                   | P30    | P31    | P32    | P97    |
| 25MHz                   | Closed | Open   | Closed | Open   |
| 33MHz                   | Closed | Closed | Open   | Open   |
| 40MHz                   | Open   | Open   | Closed | Closed |
| 50MHz                   | Closed | Open   | Closed | Closed |
| 50iMHz                  | Closed | Open   | Closed | Open   |
| 66iMHz                  | Closed | Closed | Open   | Open   |