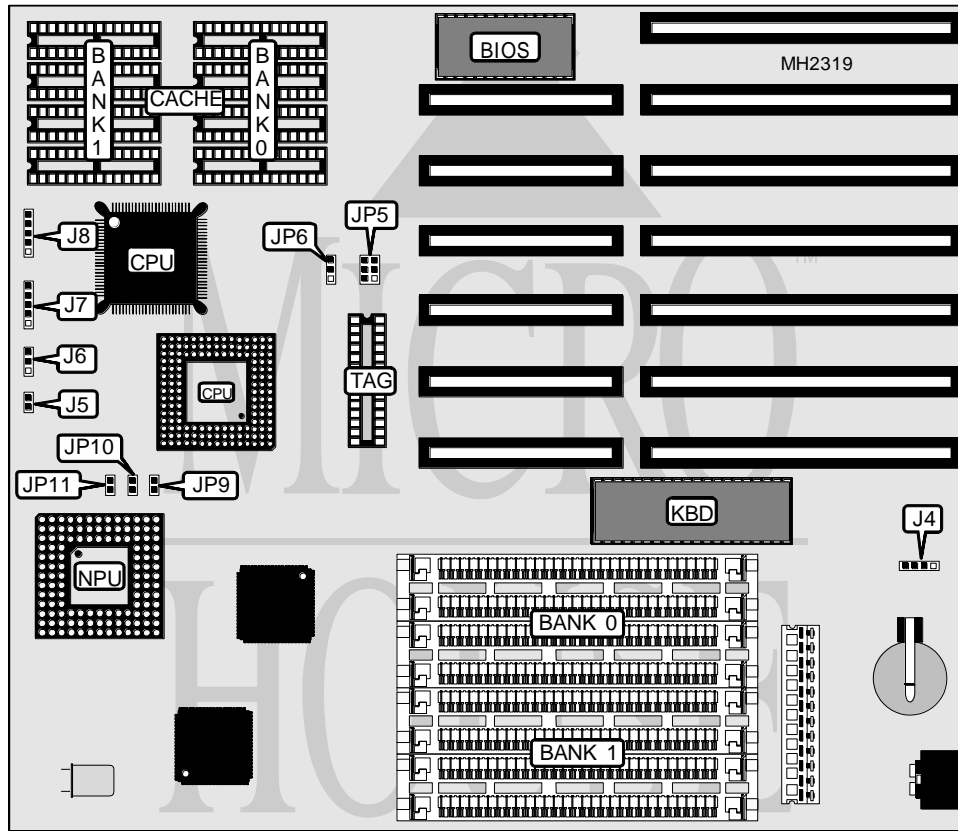


# CHAINTECH COMPUTER COMPANY, LTD.

## 333AC/340AC/333ACB/340ACB

<b>Processor</b>	80386DX/CX486DLC
<b>Processor Speed</b>	33/40MHz
<b>Chip Set</b>	ALI
<b>Max. Onboard DRAM</b>	32MB
<b>Cache</b>	64/128/256KB
<b>BIOS</b>	AMI
<b>Dimensions</b>	240mm x 220mm
<b>I/O Options</b>	None
<b>NPU Options</b>	80387DX/CX487DLC/3167



CONNECTIONS			
Purpose	Location	Purpose	Location
External battery	J4	Turbo switch	J7 (pins 1&2)
Reset switch	J5	Turbo LED	J7 (pins 4&5)
Speaker	J6	Power LED & keylock	J8

Continued on next page. . .

**CHAINTECH COMPUTER CO. LTD.**  
**333AC/340AC/333ACB/340ACB**

... continued from previous page

DRAM CONFIGURATION		
Size	Bank 0	Bank 1
1MB	(4) 256K x 9	NONE
2MB	(4) 256K x 9	(4) 256K x 9
4MB	(4) 1M x 9	NONE
5MB	(4) 256K x 9	(4) 1M x 9
8MB	(4) 1M x 9	(4) 1M x 9
16MB	(4) 4M x 9	NONE
32MB	(4) 4M x 9	(4) 4M x 9

CACHE CONFIGURATION			
Size	Bank 0	Bank 1	Tag
64KB	(4) 8K x 8	(4) 8K x 8	(1) 8K x 8
128KB	(4) 32K x 8	NONE	(1) 8K x 8
256KB	(4) 32K x 8	(4) 32K x 8	(1) 32K x 8

CACHE JUMPER CONFIGURATION				
Size	JP5 (pins 1 & 2)	JP5 (pins 3 & 4)	JP5 (pins 5 & 6)	JP6
64KB	Open	Open	Open	pins 1 & 2 closed
128KB	Closed	Closed	Open	pins 2 & 3 closed
256KB	Closed	Closed	Closed	pins 1 & 2 closed

CPU TYPE CONFIGURATION			
Type	JP9	JP10	JP11
80386DX	Open	Open	Open
CX486DLC	Closed	Closed	Closed