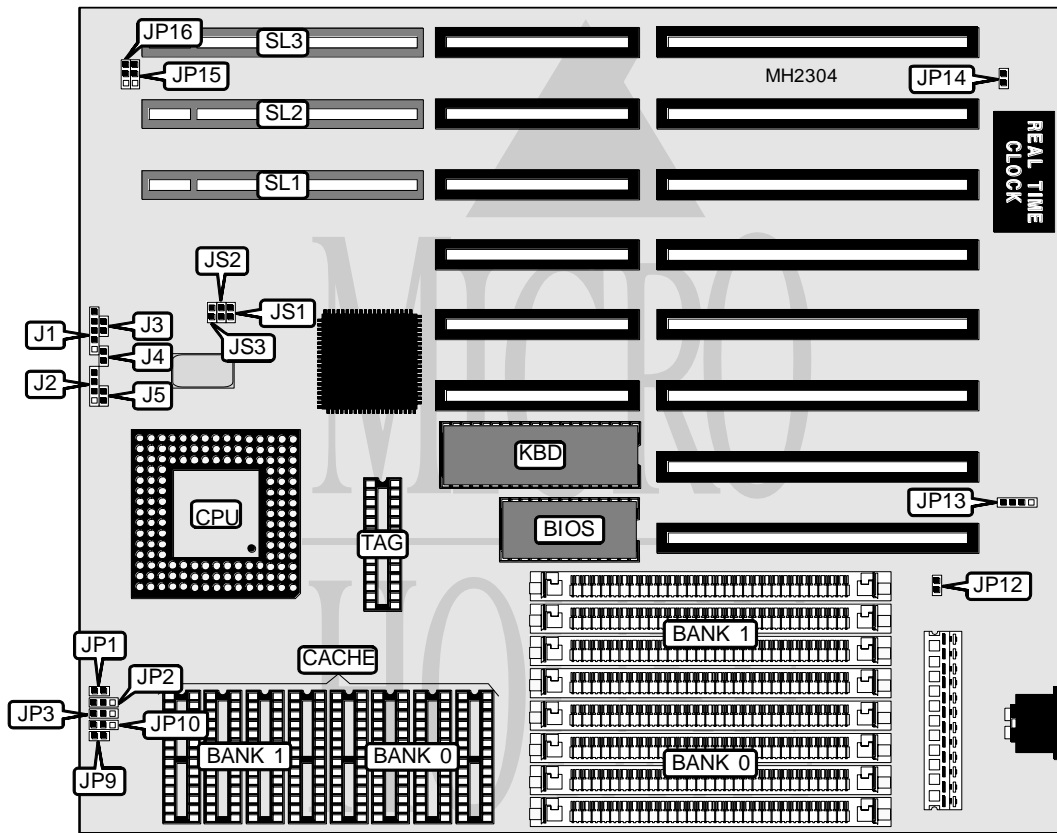


# UNIDENTIFIED

## 4 5 2 S

<b>Processor</b>	80486SX/80487SX/80486DX/80486DX2/Pentium Overdrive
<b>Processor Speed</b>	25/33/40/50(internal)/50/66(internal)MHz
<b>Chip Set</b>	SIS
<b>Max. Onboard DRAM</b>	32MB
<b>Cache</b>	64/128/256KB
<b>BIOS</b>	AMI
<b>Dimensions</b>	254mm x 220mm
<b>I/O Options</b>	32-bit VESA local bus slots (3)
<b>NPU Options</b>	None



CONNECTIONS			
Purpose	Location	Purpose	Location
Power LED & keylock	J1	Reset switch	J5
Speaker	J2	External battery	JP13
Turbo LED	J3	32-bit VESA local bus slots	SL1 - SL3
Turbo switch	J4		

Continued on next page. . .

# UNIDENTIFIED

## 452S

... continued from previous page

USER CONFIGURABLE SETTINGS		
Function	Jumper	Position
í Monitor type select monochrome	JP12	Open
Monitor type select color	JP12	Closed
í CMOS memory normal operation	JP14	Open
CMOS memory clear	JP14	Closed

DRAM CONFIGURATION		
Size	Bank 0	Bank 1
1MB	(4) 256K x 9	NONE
2MB	(4) 256K x 9	(4) 256K x 9
4MB	(4) 1M x 9	NONE
8MB	(4) 1M x 9	(4) 1M x 9
16MB	(4) 4M x 9	NONE
20MB	(4) 1M x 9	(4) 4M x 9
32MB	(4) 4M x 9	(4) 4M x 9

CACHE CONFIGURATION			
Size	Bank 0	Bank 1	TAG
64KB	(4) 8K x 8	(4) 8K x 8	(1) 8K x 8
128KB	(4) 32K x 8	NONE	(1) 8K x 8
256KB	(4) 32K x 8	(4) 32K x 8	(1) 16K x 8 or (1) 32K x 8

CACHE JUMPER CONFIGURATION		
Size	JP9	JP10
64KB	Open	Open
128KB	Closed	pins 1 & 2 closed
256KB	Closed	pins 2 & 3 closed

CPU TYPE CONFIGURATION			
Type	JP1	JP2	JP3
80486SX	Open	pins 2 & 3 closed	Open
80487SX	Closed	pins 1 & 2 closed	pins 2 & 3 closed
80486DX/DX2	Closed	pins 1 & 2 closed	pins 1 & 2 closed
Pentium Overdrive	Closed	pins 1 & 2 closed	pins 2 & 3 closed

CPU SPEED CONFIGURATION			
Type	JS1	JS2	JS3
25MHz	Open	Open	Closed
33MHz	Closed	Open	Open
40MHz	Closed	Closed	Open
50iMHz	Open	Open	Closed
50MHz	Open	Closed	Open
66iMHz	Closed	Open	Open

Continued on next page...

# UNIDENTIFIED

## 452S

... continued from previous page

VESA WAIT STATE CONFIGURATION	
Wait states	JP16
0 wait states	pins 1 & 2 closed
1 wait state	pins 2 & 3 closed

BUS SPEED CONFIGURATION	
CPU speed	JP15
<= 33MHz	pins 1 & 2 closed
> 33MHz	pins 2 & 3 closed