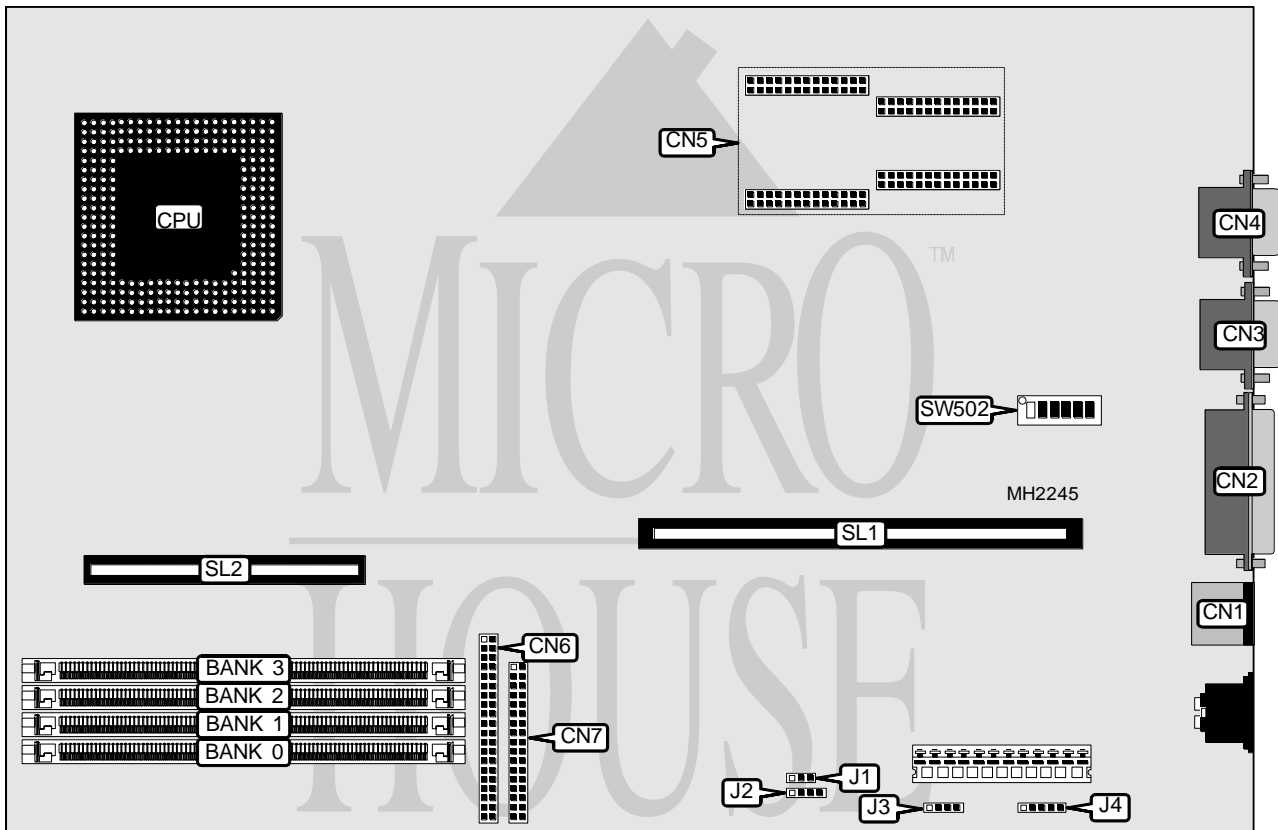


COMPAQ COMPUTER CORPORATION DESKPRO XE PENTIUM

Processor	Pentium
Processor Speed	60/66MHz
Chip Set	Compaq
Max. Onboard DRAM	128MB
Cache	64/256KB (on external cache card)
BIOS	AMI
Dimensions	330mm x 218mm
I/O Options	External cache card, floppy drive interface, IDE interface, parallel port, PS/2 mouse port, serial port, VGA port
NPU Options	None



CONNECTIONS			
Purpose	Location	Purpose	Location
PS/2 mouse port	CN1	Floppy drive interface	CN7
Parallel port	CN2	Speaker	J1
Serial port	CN3	External battery	J3
VGA port	CN4	Power LED & keylock	J4
Video memory upgrade	CN5	Riser card	SL1
IDE interface	CN6	External cache card	SL2

Continued next page. . .

COMPAQ COMPUTER CORPORATION DESKPRO XE PENTIUM

... continued from previous page

USER CONFIGURABLE SETTINGS		
Function	Jumper/Switch	Position
í Battery type select internal	J1	pins 1 & 2 closed
Battery type select external	J1	pins 2 & 3 closed
í On board video enabled	SW502/1	Off
On board video disabled	SW502/1	On
í Setup write protect disabled	SW502/2	Off
Setup write protect enabled	SW502/2	On
í Floppy drive select read/write	SW502/3	Off
í Floppy drive select read only	SW502/3	On
í Factory configured - do not alter	SW502/4	Off
í CMOS memory normal operation	SW502/5	Off
CMOS memory clear	SW502/5	On
í Flash BIOS write protect enabled	SW502/6	Off
Flash BIOS write protect disabled	SW502/6	On

DRAM CONFIGURATION				
Size	Bank 0	Bank 1	Bank 2	Bank 3
2MB	(1) 512K x 36	NONE	NONE	NONE
4MB	(1) 512K x 36	(1) 512K x 36	NONE	NONE
4MB	(1) 1M x 36	NONE	NONE	NONE
6MB	(1) 512K x 36	(1) 512K x 36	(1) 512K x 36	NONE
6MB	(1) 512K x 36	(1) 1M x 36	NONE	NONE
8MB	(1) 512K x 36	(1) 512K x 36	(1) 512K x 36	(1) 512K x 36
8MB	(1) 1M x 36	(1) 1M x 36	NONE	NONE
8MB	(1) 2M x 36	NONE	NONE	NONE
10MB	(1) 512K x 36	(1) 1M x 36	(1) 1M x 36	NONE
10MB	(1) 512K x 36	(1) 2M x 36	NONE	NONE
12MB	(1) 1M x 36	(1) 1M x 36	(1) 1M x 36	NONE
12MB	(1) 1M x 36	(1) 2M x 36	NONE	NONE
14MB	(1) 512K x 36	(1) 1M x 36	(1) 1M x 36	(1) 1M x 36
16MB	(1) 1M x 36	(1) 1M x 36	(1) 1M x 36	(1) 1M x 36
16MB	(1) 2M x 36	(1) 2M x 36	NONE	NONE
16MB	(1) 4M x 36	NONE	NONE	NONE
18MB	(1) 512K x 36	(1) 2M x 36	(1) 2M x 36	NONE
18MB	(1) 512K x 36	(1) 4M x 36	NONE	NONE
20MB	(1) 1M x 36	(1) 2M x 36	(1) 2M x 36	NONE
20MB	(1) 1M x 36	(1) 4M x 36	NONE	NONE
24MB	(1) 2M x 36	(1) 2M x 36	(1) 2M x 36	NONE
24MB	(1) 2M x 36	(1) 4M x 36	NONE	NONE
26MB	(1) 512K x 36	(1) 2M x 36	(1) 2M x 36	(1) 2M x 36
28MB	(1) 1M x 36	(1) 2M x 36	(1) 2M x 36	(1) 2M x 36
32MB	(1) 2M x 36	(1) 2M x 36	(1) 2M x 36	(1) 2M x 36
32MB	(1) 4M x 36	(1) 4M x 36	NONE	NONE
32MB	(1) 8M x 36	NONE	NONE	NONE
34MB	(1) 512K x 36	(1) 4M x 36	(1) 4M x 36	NONE

Continued next page...

COMPAQ COMPUTER CORPORATION

DESKPRO XE PENTIUM

... continued from previous page

DRAM CONFIGURATION (CON'T)				
Size	Bank 0	Bank 1	Bank 2	Bank 3
34MB	(1) 512K x 36	(1) 8M x 36	NONE	NONE
36MB	(1) 1M x 36	(1) 4M x 36	(1) 4M x 36	NONE
36MB	(1) 1M x 36	(1) 8M x 36	NONE	NONE
40MB	(1) 2M x 36	(1) 4M x 36	(1) 4M x 36	NONE
40MB	(1) 2M x 36	(1) 8M x 36	NONE	NONE
48MB	(1) 4M x 36	(1) 4M x 36	(1) 4M x 36	NONE
48MB	(1) 4M x 36	(1) 8M x 36	NONE	NONE
50MB	(1) 512K x 36	(1) 4M x 36	(1) 4M x 36	(1) 4M x 36
50MB	(1) 1M x 36	(1) 4M x 36	(1) 4M x 36	(1) 4M x 36
56MB	(1) 2M x 36	(1) 4M x 36	(1) 4M x 36	(1) 4M x 36
64MB	(1) 4M x 36	(1) 4M x 36	(1) 4M x 36	(1) 4M x 36
64MB	(1) 8M x 36	(1) 8M x 36	NONE	NONE
66MB	(1) 512K x 36	(1) 8M x 36	(1) 8M x 36	NONE
68MB	(1) 1M x 36	(1) 8M x 36	(1) 8M x 36	NONE
72MB	(1) 2M x 36	(1) 8M x 36	(1) 8M x 36	NONE
80MB	(1) 4M x 36	(1) 8M x 36	(1) 8M x 36	NONE
96MB	(1) 8M x 36	(1) 8M x 36	(1) 8M x 36	NONE
98MB	(1) 512K x 36	(1) 8M x 36	(1) 8M x 36	(1) 8M x 36
100MB	(1) 1M x 36	(1) 8M x 36	(1) 8M x 36	(1) 8M x 36
104MB	(1) 2M x 36	(1) 8M x 36	(1) 8M x 36	(1) 8M x 36
112MB	(1) 4M x 36	(1) 8M x 36	(1) 8M x 36	(1) 8M x 36
128MB	(1) 8M x 36	(1) 8M x 36	(1) 8M x 36	(1) 8M x 36