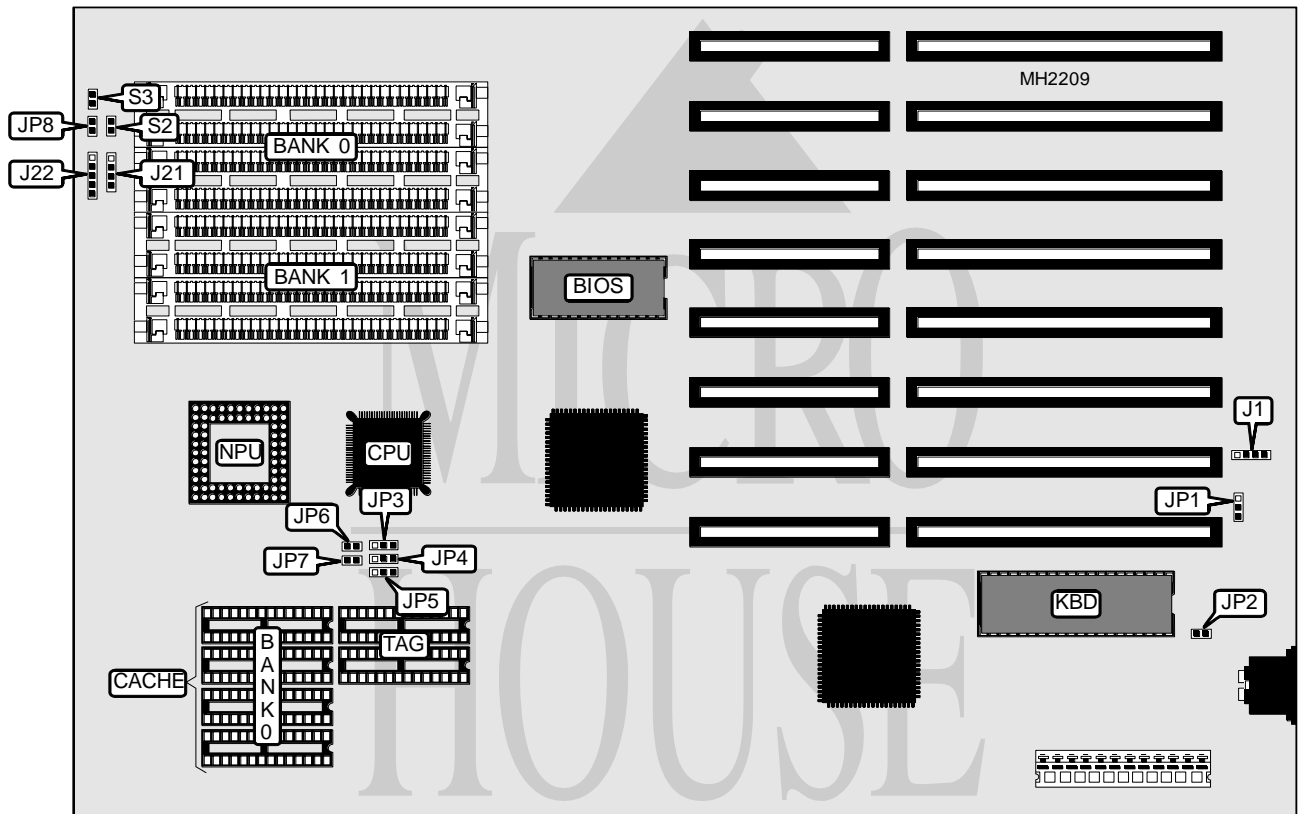


UNIDENTIFIED

386XM-20/OP

Processor	80386SX
Processor Speed	20/25MHz
Chip Set	OPT1
Max. Onboard DRAM	8MB
Cache	16/32/64KB
BIOS	AMI
Dimensions	330mm x 218mm
I/O Options	None
NPU Options	80387SX



CONNECTIONS			
Purpose	Location	Purpose	Location
External battery	J1	Turbo LED	JP8
Speaker	J21	Reset switch	S2
Power LED & keylock	J22	Turbo switch	S3

Continued on next page. . .

UNIDENTIFIED

386XM-20/OP

... continued from previous page

USER CONFIGURABLE SETTINGS		
Function	Jumper	Position
í CMOS memory normal operation	JP1	pins 2 & 3 closed
CMOS memory clear	JP1	pins 1 & 2 closed
í Monitor type select monochrome	JP2	Open
Monitor type select color	JP2	Closed

DRAM CONFIGURATION		
Size	Bank 0	Bank 1
1MB	(4) 256K x 9	NONE
2MB	(4) 256K x 9	(4) 256K x 9
4MB	(4) 1M x 9	NONE
8MB	(4) 1M x 9	(4) 1M x 9

CACHE CONFIGURATION		
Size	Bank 0	TAG
16KB	(4) 16K x 1	(2) 4K x 4
32KB	(4) 4K x 1	(2) 4K x 4
64KB	(4) 32K x 1	(2) 4K x 4

CACHE JUMPER CONFIGURATION					
Size	JP3	JP4	JP5	JP6	JP7
16KB	1 & 2	1 & 2	1 & 2	Open	Open
32KB	2 & 3	1 & 2	1 & 2	Closed	Open
64KB	2 & 3	2 & 3	2 & 3	Open	Closed

Note: Pins designated should be in the closed position.